



16990



Features of a full size high chair but with a slender fold  
 Características de una trona de tamaño normal pero con un plegado estilizado  
 Caractéristiques d'une chaise haute de taille normale mais avec un pliage plus fin



**3-section Twist & Dine™ plate locks securely in place**  
 El plato Twist & Dine™ de 3 secciones se bloquea firmemente en su sitio  
**La plaque Twist & Dine™ à 3 sections se verrouille solidement en place**



ingenuitybaby.com



Features of a full size high chair but with a slender fold  
 Características de una trona de tamaño normal pero con un plegado estilizado  
 Caractéristiques d'une chaise haute de taille normale mais avec un pliage plus fin



**3-section Twist & Dine™ plate locks securely in place**  
 El plato Twist & Dine™ de 3 secciones se bloquea firmemente en su sitio  
**La plaque Twist & Dine™ à 3 sections se verrouille solidement en place**



**Slender fold, lightweight design is easy to move**  
 Plegado fino, diseño ligero fácil de mover  
**Pliage fin, conception légère, facile à déplacer**



ingenuitybaby.com



Features of a full size high chair but with a slender fold  
 Características de una trona de tamaño normal pero con un plegado estilizado  
 Caractéristiques d'une chaise haute de taille normale mais avec un pliage plus fin

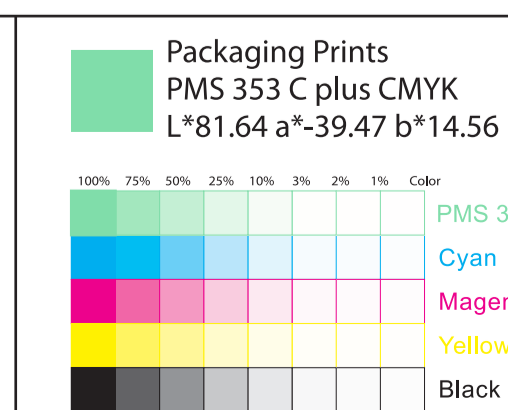


**3-section Twist & Dine™ plate locks securely in place**  
 El plato Twist & Dine™ de 3 secciones se bloquea firmemente en su sitio  
**La plaque Twist & Dine™ à 3 sections se verrouille solidement en place**



ingenuitybaby.com

**kids2**  
 File Name: 16990\_1L\_519072325  
 Brand: Ingenuity  
 Category: High Chair  
 Product Name: Compact Folding High Chair  
 Package Designer: alisa  
 Product Manager: Enter Name  
 Engineer: Enter Name  
 Language: 3L (EN, ES, FR)  
 Dimensions:



There are two color bars on this proof and in the art file. One to be used with X-rite D50 Spectrophotometer. The other can be used with most other spectrophotometers. Printers must repeat one of the two color bars all the way across the width (grasper edge) of the press sheets on sample runs and production runs. Failure to comply will result in the remaking of film and/or plates at your cost. 本印刷品及设计文件包含两种色标。一种适用于X-rite (爱色丽) D50 分光光度计。另一种适用于其它大部分的分光光度计。在打样或批量生产时，印刷厂必须将其中一种色标并重复添加直到覆盖整张纸的宽度(开口边)。否则将导致重新制版及重印，造成不必要的浪费。