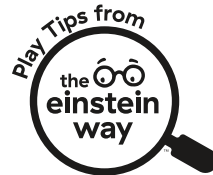


FRONT (4x5in)

11649



The Einstein Way™
 Magic Touch Piano™ Wooden Musical Toy
 Play Tips



TEACHES



BACK (4x5in)



Make Connections

Music helps stimulate both sides of baby's brain! Encourage baby to explore a note or create a new song. With every note they play, they're making music, and building connections!

Finger Fitness

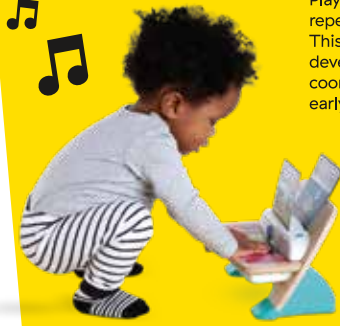
Encourage baby to tap individual keys with one finger! Isolated finger movement strengthens hand muscles and improves fine motor skills, laying the foundation for future grasping and writing.

Call & Respond

Play a note, then encourage baby to repeat it by tapping the same key. This simple back-and-forth helps develop listening skills, memory, and coordination, while also fostering early musical exploration.

Discover the Rainbow

Name and match the colors! Encourage baby to name each color as they touch keys, then match the keys to notes on the cards. This builds color recognition, matching, and language skills.



Scan to watch these play tips in action!



Attach Instructions

using 1 Zip Tie attach 4x5 playtip card behind product using die cut holes in back inside of box



0.3mm Matte White PP



File Name: 11649_PTC120625

Brand: Hape/Baby Einstein

Category: Baby Toy

Product Name: Magic Touch Piano™

Package Designer: Chelsea A

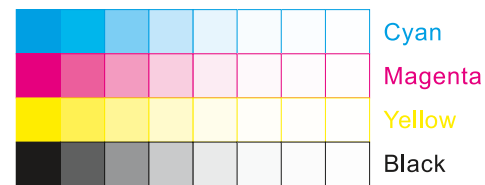
Product Manager:

Engineer:

Languages: Languages on Package 1

Dimensions: see die line

Packaging Prints
 CMYK



pressSIGN CMYK_Colourbar_ISO 12647-2 Coated White Backing v6_labels_below i1Pro Contrast Bars.eps



pressSIGN CMYK_Colourbar_ISO 12647-2 Coated White Backing v6_labels_below.eps



There are two color bars on this proof and in the art file. One to be used with X-rite I1 Pro Spectrophotometer. The other can be used with most other spectrophotometers. Printers must repeat one of the two color bars all the way across the width (gripper edge) of the press sheets on sample runs and production runs. Failure to comply will result in the remaking of film and/or plates at your cost. 数码稿以及设计文件包含了两种色带。一种适用于X-rite (爱色丽) I1 Pro 分光光度计, 另一种适用于其它大部分的分光光度计。在打样或者批量生产时, 印刷厂必须选择其中一种色带并重复添加直到覆盖整张纸的宽度(叼口边)。没有按照上述要求而导致重新出菲林、出版的费用将由印刷厂承担。