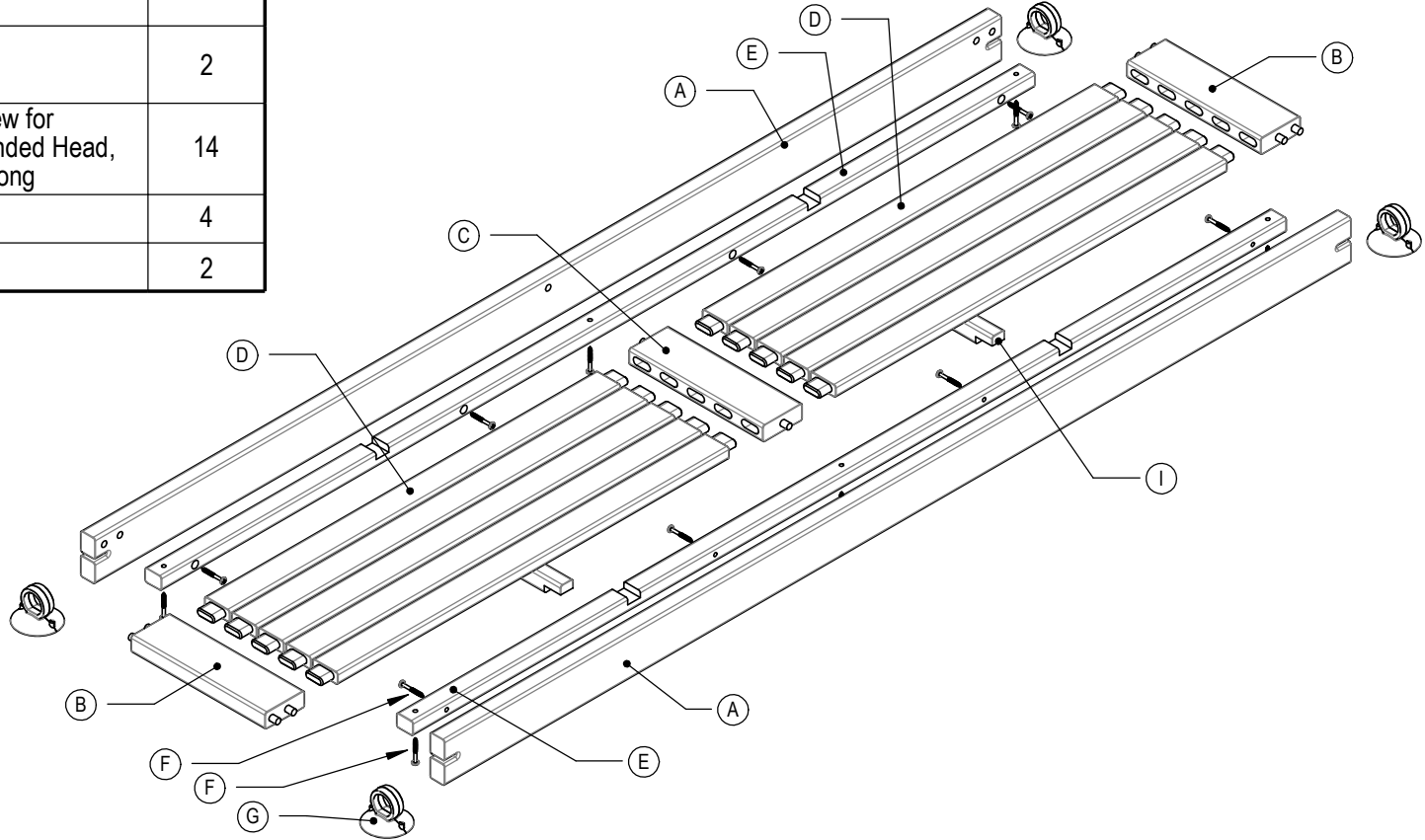


Ref.	Description	Quantity
A	Teak Part (Grade B)	2
B	Teak Part (Grade B)	2
C	Teak Part (Grade B)	1
D	Teak Part (Grade B)	10
E	Teak Part (Grade B)	2
F	316 Stainless Steel Screw for Plywood and OSB, Rounded Head, Number 8 Size, 1-1/4" Long	14
G	Suction-Cup 10045866	4
I	Teak Part (Grade B)	2



AMERICAN BATH GROUP				GENERAL TOLERANCES (Unless otherwise specified)		TITLE: Shower Bench Removable 60 Teak - Spec Drawing	
REV	MODIFICATION DESCRIPTION	BY	DATE	IN MM		NAME DATE	
07	Groove Dimension	SD	2024-09-24	X/X	±1/8 ±3	DRAWN BY	
06	Packaging	SD	2023-06-07	X.X	±0.125 ±3	APPROVED BY	
05	Metric	SD	2023-04-11	X.XX	±0.06 ±1.5	SHEET 2 OF 5	
04	Added Assembly Dowels	SD	2023-04-06	X.XXX	±0.031 ±0.79	FORMAT A SCALE: 1:8	
				X.X*	±0.5*	DWG. # 10043854-185	
				Inch	Max. Radi ±0.015 ±0.035	REV: 07	

AMERICAN BATH GROUP, OU ENCORE L'UNE DE SES FILIALES, EST L'UNIQUE PROPRIÉTAIRE DE CE DOCUMENT ET DES INFORMATIONS CONFIDENTIELLES QUI LE RENFERME. NUL NE PEUT EN FAIRE L'USAGE QUEL QU'EN SOIT L'OBJET. VISE, LES REPRODUIRE OU LES DIVULGUER, SANS LE
 CONSENTEMENT ÉCRIT EXPLICITE DE MAX CORPORATION OU DE SA FILIALE APPROPRIÉE. THIS DOCUMENT AND THE INFORMATION IT CONTAINS ARE THE EXCLUSIVE PROPERTY OF AMERICAN BATH GROUP OR ANY OF ITS SUBSIDIARIES, AND ARE PROPRIETARY AND CONFIDENTIAL. NEITHER THIS
 DOCUMENT NOR ANY OF THE INFORMATION CONTAINED IN IT MAY BE USED FOR ANY PURPOSE, NOR REPRODUCED OR DISCLOSED BY YOU TO OTHERS, WITHOUT THE EXPRESS WRITTEN CONSENT OF MAX CORPORATION OR ITS APPROPRIATE SUBSIDIARY.

1

2

3

4

D

D

C

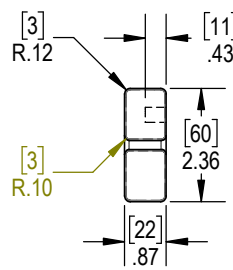
C

B

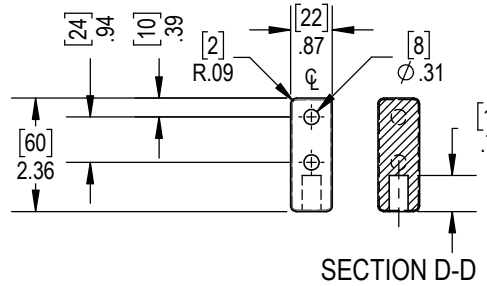
B

A

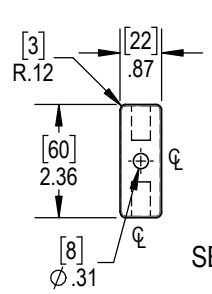
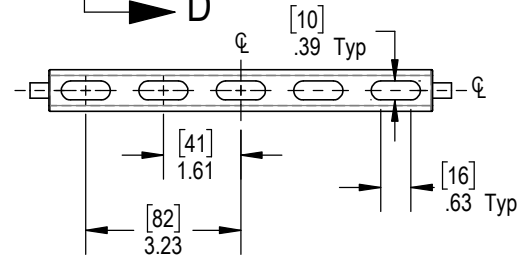
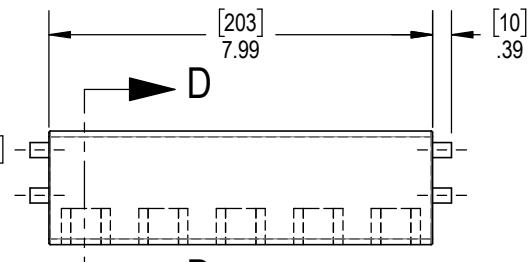
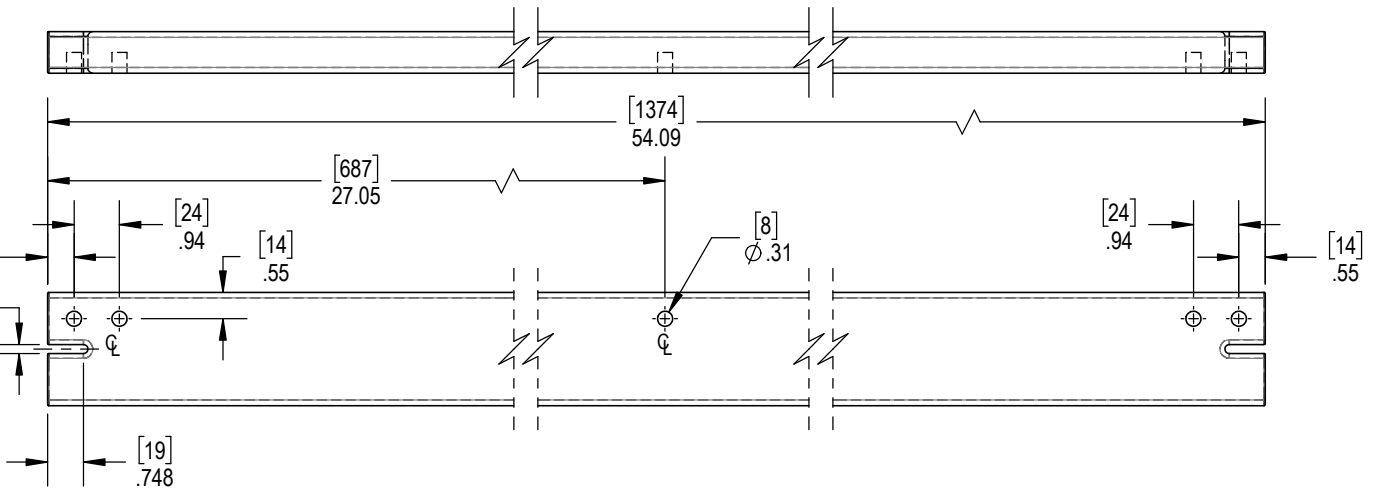
A



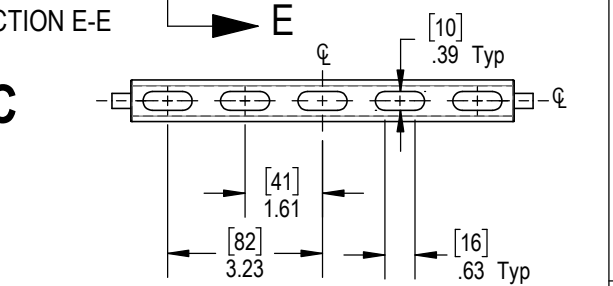
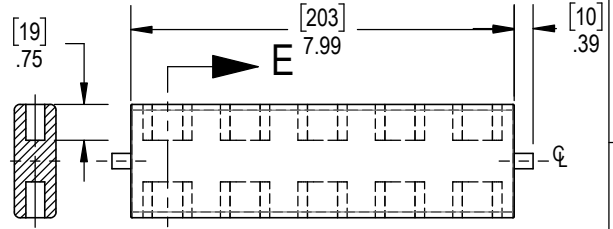
Part A


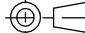


Part B



Part C



AMERICAN  BATH GROUP				 GENERAL TOLERANCES (Unless otherwise specified)		TITLE: Shower Bench Removable 60 Teak - Spec Drawing	
REV	MODIFICATION DESCRIPTION	BY	DATE	Only electronic version of this document is controlled. X/X ±1/8 ±3 X.X ±0.125 ±3 X.XX ±0.06 ±1.5 X.XXX ±0.031 ±0.79 X.X* ±0.5* Max. Radi ±0.015 ±0.035	IN MM ±1/8 ±3 ±0.125 ±3 ±0.06 ±1.5 ±0.031 ±0.79 ±0.5*	NAME _____ DATE _____	
07	Groove Dimension	SD	2024-09-24			DRAWN BY _____ APPROVED BY _____	
06	Packaging	SD	2023-06-07	SHEET 3 OF 5		FORMAT A SCALE: 1:4	
05	Metric	SD	2023-04-11	DWG. # 10043854-185		REV: 07	
04	Added Assembly Dowels	SD	2023-04-06				

1

2

3

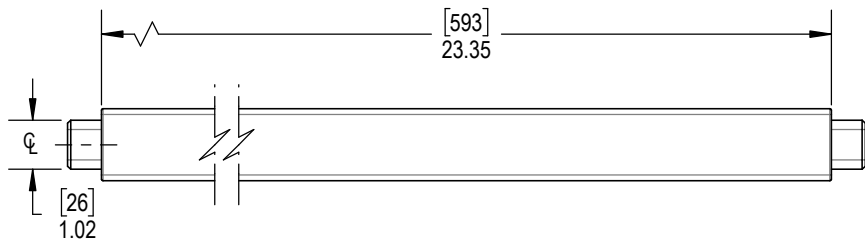
AMERICAN BATH GROUP, OU ENCORE L'UNE DE SES FILIALES, EST L'UNIQUE PROPRIÉTAIRE DE CE DOCUMENT ET DES INFORMATIONS CONFIDENTIELLES QUI RENFERME. NUL NE PEUT EN FAIRE L'USAGE QUEL QU'EN SOIT L'OBJET. VISE LES REPRODUCTIONS OU LES DIVULGUER. SANS LE CONSENTEMENT ÉCRIT D'AMERICAN BATH GROUP, OU D'UNE DE SES FILIALES APPROPRIÉES, CE DOCUMENT ET LES INFORMATIONS QUI Y SONT CONTENUES NE PEUVENT ÊTRE REPRODUITS, NI COMMUNIQUÉS À TROISIÈME PARTI, NI ÊTRE DIVULGUÉS À UN TIERS. LE DOCUMENT NE PEUT ÊTRE REPRODUIT NI COMMUNIQUÉ À UN TIERS, NI ÊTRE DIVULGUÉ À UN TIERS, NI ÊTRE REPRODUIT NI COMMUNIQUÉ À UN TIERS, NI ÊTRE DIVULGUÉ À UN TIERS, NI ÊTRE REPRODUIT NI COMMUNIQUÉ À UN TIERS, NI ÊTRE DIVULGUÉ À UN TIERS.

1

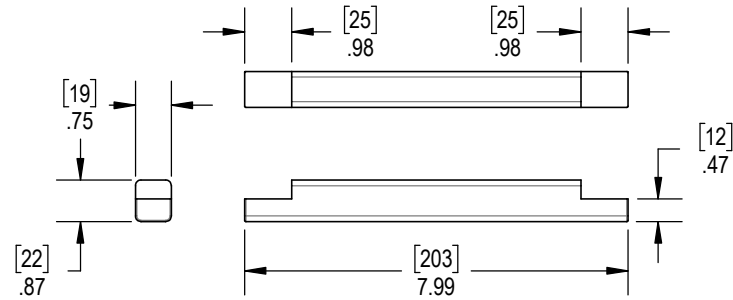
2

3

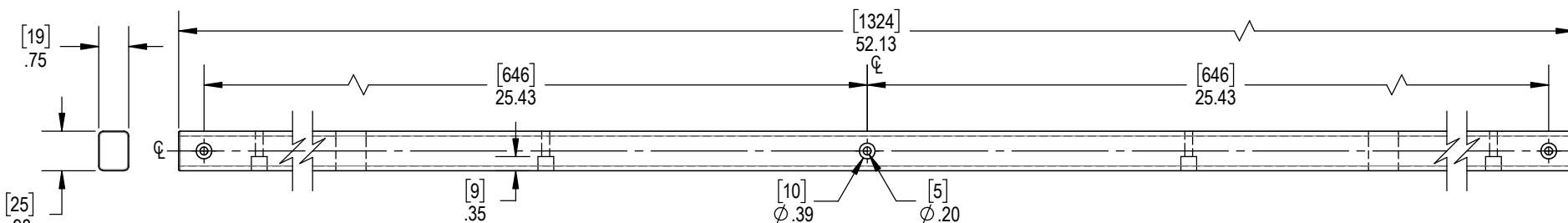
4



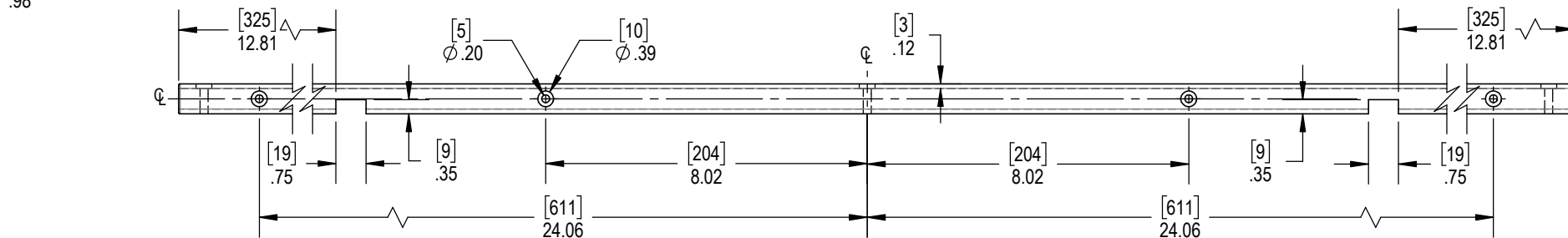
Part D



Part I



Part E



AMERICAN BATH GROUP



TITLE: Shower Bench Removable 60 Teak - Spec Drawing

REV	MODIFICATION DESCRIPTION	BY	DATE
07	Groove Dimension	SD	2024-09-24
06	Packaging	SD	2023-06-07
05	Metric	SD	2023-04-11
04	Added Assembly Dowels	SD	2023-04-06

GENERAL TOLERANCES (Unless otherwise specified)	
	IN MM
X/X	±1/8 ±3
X.X	±0.125 ±3
X.XX	±0.06 ±1.5
X.XXX	±0.031 ±0.79
X.X*	±0.5*
Inch	Max. Radi ±0.015 ±0.035

DRAWN BY	NAME	DATE
APPROVED BY		
SHEET 4 OF 5	FORMAT	A SCALE: 1:4

DWG. # 10043854-185

REV: 07

1

2

3

A

D

C

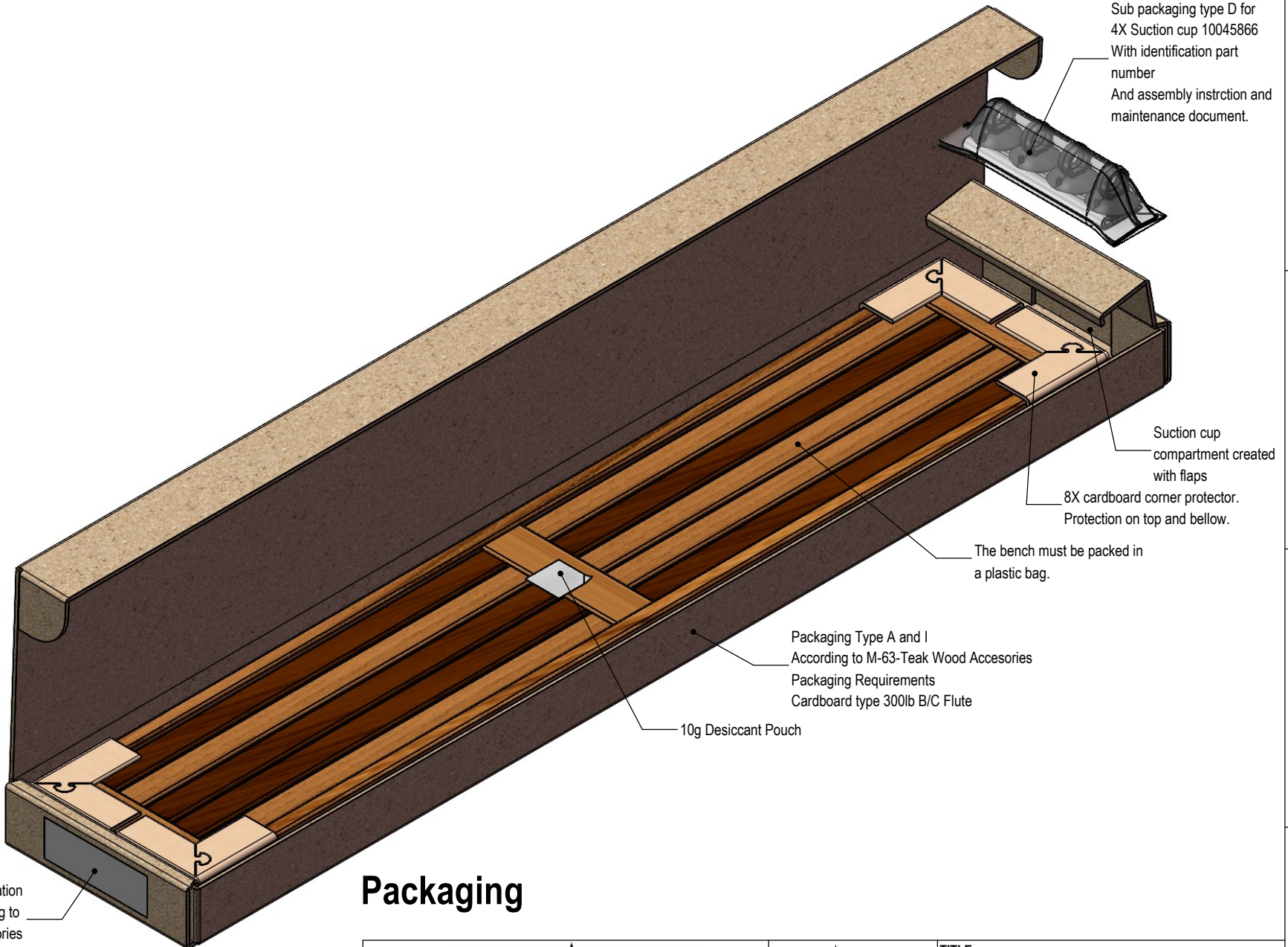
B

A

AMERICAN BATH GROUP, OU ENCORE L'UNE DE SES FILIALES, EST L'UNIQUE PROPRIÉTAIRE DE CE DOCUMENT ET DES INFORMATIONS CONFIDENTIELLES QU'IL RENFERME. NUL NE PEUT EN FAIRE L'USAGE QUEL QU'EN SOIT L'OBJET. VISE, LES REPRODUIRE OU LES DIVULGUER, SANS LE CONSENTEMENT ÉCRIT EXPLICITE DE MAX CORPORATION OU DE SA FILIALE APPROPRIÉE. THIS DOCUMENT AND THE INFORMATION IT CONTAINS ARE THE EXCLUSIVE PROPERTY OF AMERICAN BATH GROUP OR ANY OF ITS SUBSIDIARIES, AND ARE PROPRIETARY AND CONFIDENTIAL. NEITHER THIS DOCUMENT NOR ANY OF THE INFORMATION CONTAINED IN IT MAY BE USED FOR ANY PURPOSE, NOR REPRODUCED OR DISCLOSED BY YOU TO OTHERS, WITHOUT THE EXPRESS WRITTEN CONSENT OF MAX CORPORATION OR ITS APPROPRIATE SUBSIDIARY. NEITHER THIS

1 2 3 4

D
C
B
A



Sub packaging type D for
4X Suction cup 10045866
With identification part
number
And assembly instrction and
maintenance document.

Suction cup
compartment created
with flaps
8X cardboard corner protector.
Protection on top and bellow.


The bench must be packed in
a plastic bag.

Packaging Type A and I
According to M-63-Teak Wood Accesories
Packaging Requirements
Cardboard type 300lb B/C Flute

10g Desiccant Pouch

Label identification
According to
M-63-Teak Wood Accesories

Packaging

AMERICAN  BATH GROUP				GENERAL TOLERANCES (Unless otherwise specified)		TITLE: Shower Bench Removable 60 Teak - Spec Drawing	
REV	MODIFICATION DESCRIPTION	BY	DATE			NAME DATE	
07	Groove Dimension	SD	2024-09-24	Only electronic version of this document is controlled.	X/X ±1/8 ±3	DRAWN BY	
06	Packaging	SD	2023-06-07		X.X ±0.125 ±3	APPROVED BY	
05	Metric	SD	2023-04-11		X.XX ±0.06 ±1.5	SHEET 5 OF 5	
04	Added Assembly Dowels	SD	2023-04-06		X.XXX ±0.031 ±0.79	FORMAT A SCALE: 1:12	
					X.X* ±0.5*	DWG. # 10043854-185	
					Inch Max. Radi ±0.015 ±0.035	REV: 07	

1 2 3

AMERICAN BATH GROUP, OU ENCORE L'UNE DE SES FILIALES, EST L'UNIQUE PROPRIETAIRE DE CE DOCUMENT ET DES INFORMATIONS CONFIDENTIELLES QUI LE RENFERME. NUL NE PEUT EN FAIRE L'USAGE QUEL QU'EN SOIT L'OBJET. VISE LES REPRODUCTIONS OU LES DIVULGUERS SANS LE CONSENTEMENT ECRIT EXPLICITE DE MAX CORPORATION OU DE SA FILIALE APPROPRIEE. THIS DOCUMENT AND THE INFORMATION IT CONTAINS ARE THE EXCLUSIVE PROPERTY OF AMERICAN BATH GROUP OR ANY OF ITS SUBSIDIARIES, AND ARE PROPRIETARY AND CONFIDENTIAL. NEITHER THIS DOCUMENT NOR ANY OF THE INFORMATION CONTAINED IN IT MAY BE USED FOR ANY PURPOSE, NOR REPRODUCED OR DISCLOSED BY YOU TO OTHERS, WITHOUT THE EXPRESS WRITTEN CONSENT OF MAX CORPORATION OR ITS APPROPRIATE SUBSIDIARY.