


17256 (TGT display for 16905) - ITY SWING
 PRIMARY POP, Size: 9.5" X 5"
 Language: 3L/4L (EN, ES, FR / DE, PL, IT, NL)




ity™
by ingenuity

Sun Valley™
0-9M

Canopy Portable Swing
 Columpio Portátil con Capota
 Balancelle portable avec auvent

Full canopy that is removable and has 2 toys
 Toldo completo desmontable que incluye 2 juguetes
 Auvent complet et amovible avec 2 jouets



ity™
by ingenuity

Sun Valley™
0-9M

Tragbare Schaukel mit Baldachin
 Przenośna huśtawka z daszkiem
 Alitalena portatile con cappottina
 Draagbare schommel met kap

Abnehmbarer Baldachin mit 2 Spielzeugen
 Zdejmowany daszek z 2 zabawkami
 Ampia cappottina rimovibile con 2 giocattoli
 Volledig afneembare kap met 2 speeltjes

ATTACHING INSTRUCTIONS



Attach 1 Primary POP
 with 4 swift tacks
 to the seat pad on the front edge
 of the product

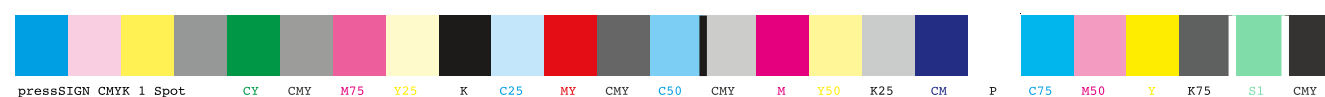


File Name: 17256_PRIPOP_090623r1.ai
Brand: Ity by Ingenuity
Category: Swing
Product Name: Sun Valley™
 Canopy Portable Swing
Package Designer: Nico Li
Product Manager: Enter Name
Engineer: Enter Name
Languages: 3L/4L (EN, ES, FR, DE, PL, IT, NL)
Dimensions: 9.5"W x 5"H

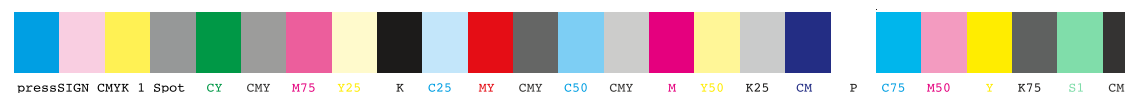
Packaging Prints
 PMS 353 C plus CMYK
 L*81.64 a*-39.47 b*14.56

100%	75%	50%	25%	10%	3%	2%	1%	Color
PMS 353 C								
Cyan								
Magenta								
Yellow								
Black								

pressSIGN CMYK 1 Spot_Colourbar_ISO 12647-2 Coated White Backing v6_labels_below i1Pro Contrast Bars.eps



pressSIGN CMYK 1 Spot_Colourbar_ISO 12647-2 Coated White Backing v6_labels_below.eps



There are two color bars on this proof and in the art file. One to be used with X-rite I1 Pro Spectrophotometer. The other can be used with most other spectrophotometers. Printers must repeat one of the two color bars all the way across the width (gripper edge) of the press sheets on sample runs and production runs. Failure to comply will result in the remaking of film and/or plates at your cost. 数码稿以及设计文件包含了两种色带。一种适用于X-rite (爱色丽) I1 Pro 分光光度计, 另一种适用于其它大部分的分光光度计。在打样或者批量生产时, 印刷厂必须选择其中一种色带并重复添加直到覆盖整张纸的宽度(叼口边)。没有按照上述要求而导致重新出菲林、出版的费用将由印刷厂承担。