

Full Course™ 6-in-1 High Chair

Tray POP - 11"x6.9"

ingenuity™



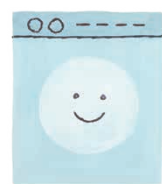
Full Course™
6-in-1 High Chair – Astro™
6M–5Y AÑOS
 ANS



6 modes to grow with baby during mealtime • 6 modos de crecer con el bebé a la hora de comer • **6 modes évolutifs pour des repas qui grandissent avec bébé**



BPA - free Feed Easy™ food tray for less mess, easy cleanup • Bandeja de comida Feed Easy™ libre de BPA, evita los desastres y facilita la limpieza • **Tablette Feed Easy™ sans BPA, pour des repas sans éclaboussures, nettoyage facile**



Main tray and Feed Easy™ tray are dishwasher safe • La bandeja principal y la bandeja Feed Easy™ se pueden lavar en el lavavajillas • **Grande tablette et tablette Feed Easy™ passant au lave vaisselle**



FRONT

kids™

File Name: 13108_TRAYPOP072622r1.ai

Brand: Ingenuity

Category: High Chair

Product Name: Full Course™ 6-in-1 High Chair – Astro™

Package Designer: Carol Pang

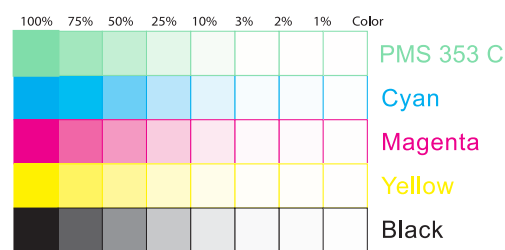
Product Manager: XXXXXXXX

Engineer: XXXXXXXX

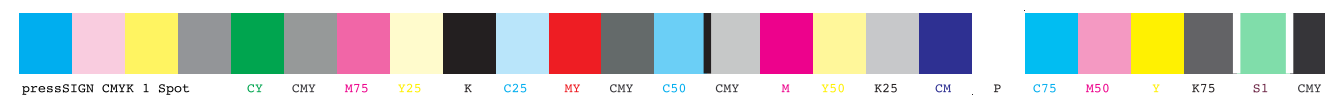
Languages: 3L

Dimensions: N/A see spec

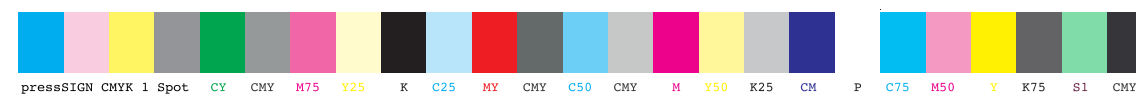
Packaging Prints
 PMS 353 C plus CMYK
 L*81.64 a*-39.47 b*14.56



pressSIGN CMYK 1 Spot_Colourbar_ISO 12647-2 Coated White Backing v6_labels_below i1Pro Contrast Bars.eps



pressSIGN CMYK 1 Spot_Colourbar_ISO 12647-2 Coated White Backing v6_labels_below.eps



There are two color bars on this proof and in the art file. One to be used with X-rite I1 Pro Spectrophotometer. The other can be used with most other spectrophotometers. Printers must repeat one of the two color bars all the way across the width (grripper edge) of the press sheets on sample runs and production runs. Failure to comply will result in the remaking of film and/or plates at your cost. 数码稿以及设计文件包含了两种色带。一种适用于X-rite (爱色丽) I1 Pro 分光光度计, 另一种适用于其它大部分的分光光度计。在打样或者批量生产时, 印刷厂必须选择其中一种色带并重复添加直到覆盖整张纸的宽度(叼口边)。没有按照上述要求而导致重新出菲林、出版的费用将由印刷厂承担。

13108
Secondary POP & Tray POP
Attaching Instructions



Attach to tray with glue dots or adhesive tape

Attach Secondary POP with zip ties to the bottom of the tray