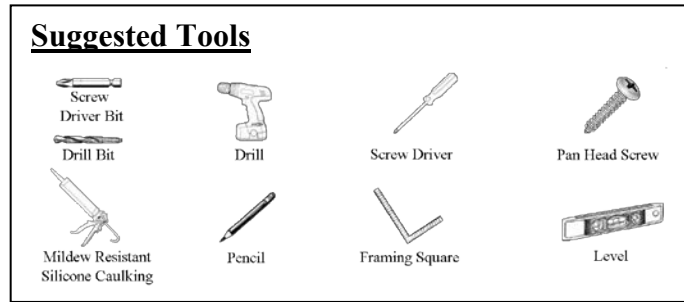


# DROP-IN BATHTUB INSTALLATION



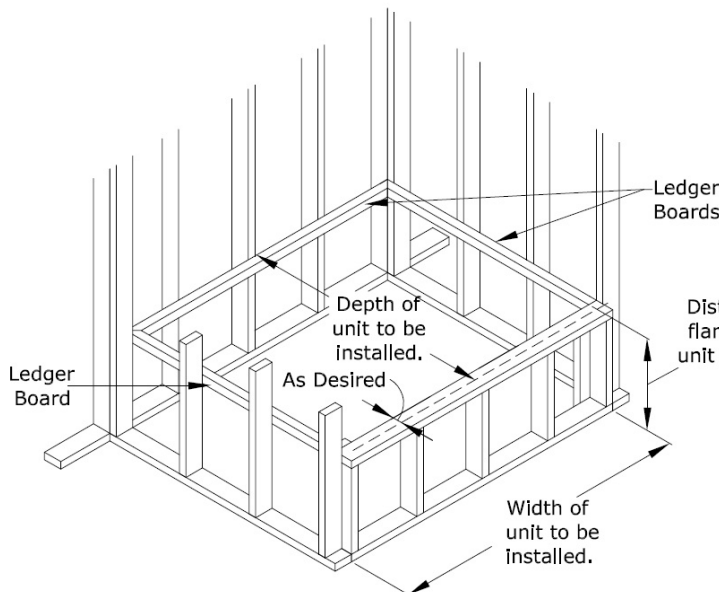
**Note: Below are the manufacturer’s suggested framing options. Due to the many possible installations, framing may need adjusted to create adequate support.**

Please consult all local and state building codes, and read the entire installation instructions prior to beginning the installation of this unit to ensure that the installation is performed correctly.

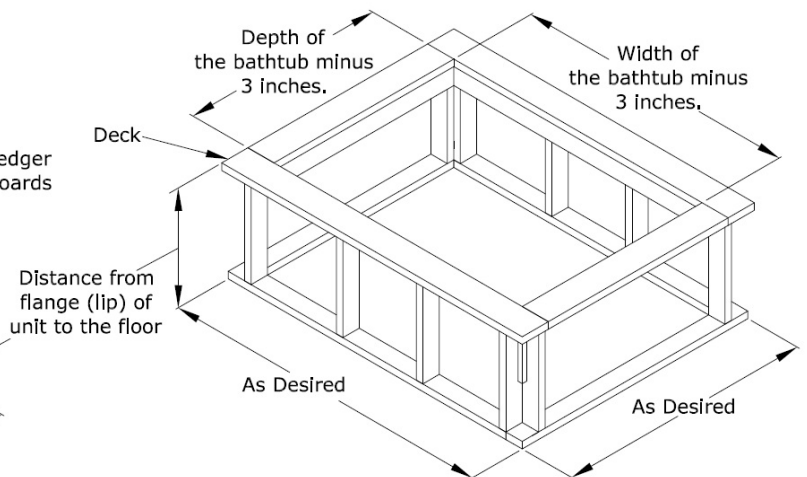
1. Frame an area in which to install the tub. *(As shown in one of the figures shown below.)* If your unit has a nailing flange, use the framing labeled alcove installation. Ledger board or deck height should be the height of the flange (lip) from the floor on which the unit is being installed. For a flanged unit, this height would be the distance from the underside of the top of the unit to the floor. Care should be taken to ensure that the floor is smooth and level, and ledger boards or the deck should be square and plumb in accordance with rough-in dimensions. If the unit being installed is a whirlpool unit, future access to the motor should be considered when installing the unit. It is advised, and is required by many building codes that an access area be incorporated into the framing for any whirlpool unit.

Figure 1

## Alcove Installation



## Island Installation



Pocket dimensions and drain location can be obtained from your retailer or by taking measurements from the bathing unit you will be installing.

2. Place the unit in the alcove or island framing and check to see if the unit is level. This check can be performed by placing a level on the ledges of the unit. The use of shims should not be necessary as long as care was taken to keep the framing plum and square. If unit is positioned at a height higher than specified, then blocking will be required for proper installation.
3. Remove the unit from the framing. Mark and layout holes for the plumbing fixtures by marking the centers of any hole locations. Be sure to drill these holes from the finish side of the unit. Drill holes with a sharp spade bit, hole saw, or use a saber saw with a plastic or metal cutting blade for larger holes.

***Note: On some bathtubs and applications the support blocking may interfere with the plumbing. In these cases the blocking can be removed with the appropriate tools as required. Care should be taken to not damage the fiberglass bottom of the tub. New support blocking will need to be replaced in absence of the material removed.***

4. Install all plumbing fixtures for the unit, making sure not to over tighten them. Check the drain and make sure that it is sealed properly and not leaking. These drop-in bathing units are designed to be supported by factory installed legs under the bathtub. (Do Not support bathtub by the rim). The point load of 300 pounds to ensure a quality product. However, for best results and/or in cases where any occupant of the home meets or exceeds 300 pounds in weight, we recommend that the unit be installed on a bedding material of cement or casting plaster. Use of a bedding material is required if the unit is being installed in a high use facility. (ie.: dormitory, locker room, nursing home, motel, hotel, etc.) For standard installations, the use of a bedding material is optional and done at the discretion of the customer. If a bedding material is used, be sure to place a moisture barrier, such as plastic, between the bedding compound and the unit. The manufacturer recommends using Gypsolite® or Structo-lite® plasters for a bedding material.
5. Before the bedding material cures, place the unit in the framing and check once more that the unit is level and plumb. When level, secure the unit to the deck by screwing to the mounting blocks installed under the lip of the unit. However, before screwing, make sure that the screws that you are using are not too long. Manufacturer is not responsible for accidental damage caused to the finished surface of the bathtub as a result of a mounting screw that is too long. If installing a flanged unit, secure the nailing flange anywhere that it comes into contact with the studding.
6. You can finish off your new unit with a variety of materials which are accepted by local building codes. Some ideas are tile, drywall caulking, drywall mud, plaster, wood or plastic trim.
7. Clean your new tub with a liquid detergent and warm water.  
Do not use any abrasive cleaners such as scouring powder or liquid abrasive cleaners.

**IF A BEDDING MATERIAL IS USED UNDER A UNIT; CEMENT SLURRY, THIN MORTAR MIX, PLASTER OF PARIS, OR A COMPARABLE FLOOR FILLING COMPOUND THAT IS NOT WATER SOLUBLE ARE PROPER BEDDING COMPOUNDS. WATER SOLUBLE MATERIALS, FOAM AND OTHER EXPANDING MATERIALS ARE NEVER TO BE USED AS A BEDDING COMPOUND.**

**JOB SITE INSTALLATION OF OWNER SUPPLIED ACCESSORIES**

**All Bathware units purchased with supplied accessories are custom reinforced at the factory to accommodate the mounting of said accessories.**

**Job-site installation of third party supplied accessories is entirely at the risk and full responsibility of the owner. Any damage to the unit or the property during or after accessory installation, or any injuries due to improper installation remain the sole responsibility of said owner and cannot be attributed to the manufacturer of this product.**

**\*\*\* WE SUGGEST THAT THE CUSTOMER AVOIDS USING A BATH MAT IN THE UNIT, AS IT COULD CAUSE WATER STAINS OR BLISTERING TO THE FINISH SURFACE OF THE UNIT. \*\*\***

**THIS BATHWARE PRODUCT IS CERTIFIED TO MEET CSA B45.5/IAPMO Z124 STANDARD. FOR DETAILS, PLEASE REFER TO ICC-ES PMG CERTIFICATION PROGRAM.**