



OWNER'S MANUAL

16" TABLE FAN



MODEL 1VAFD16

CONTENTS

SAFETY OPERATION	4
ASSEMBLY	6
USAGE	9
CONTROL PANEL	9
SPECIFICATIONS	10
CLEANING INSTRUCTIONS	10
MAINTENANCE	11
FUSE REPLACEMENT.....	11
TROUBLESHOOTING.....	12

IMPORTANT NOTE:

Read the manual carefully. Make sure to save this manual for future reference. Illustrations in this manual are for explanatory purposes only, your actual product may look slightly different.

SAFETY OPERATION

When using any electrical appliance, basic precautions should always be followed to reduce the risk of fire, electrical shock and injury:

1. Disconnect fan from electrical outlet when moving it from one location to another, when removing grille or for cleaning.
2. Fan must always be operated standing upright, and must never be used without the base. Always place the fan on an even surface where it is stable, to ensure it does not overturn while operating.
3. Never insert objects such as fingers, pencils, etc. through grille when fan is running.
4. **DO NOT USE THE FAN OUTDOORS OR IN AN OPEN WINDOW.** Rain may cause an electrical hazard.
5. Do not leave fan operating near an area where water collects (such as bathrooms or laundry rooms) to avoid electrical hazard.
6. Do not immerse the unit, put the plug or cord in water, or spray with any liquids.
7. Do not operate in the presence of open flame or flammable fumes, explosives, and/or cooking or heating appliances.
8. Do not use fan near curtains, plants, window treatments, or where anything can get caught in the blades.
9. This appliance has a polarized plug (one blade is wider than the other). To reduce the risk of electrical shock, this plug is intended to fit into a polarized outlet in only one way. If the plug does not fit in the outlet, reverse it. If it still does not fit, contact a qualified electrician. Do not attempt to override this safety feature.
10. Do not leave the fan operating or available to operate in a place where there are young children or animals. Do not allow cord to hang down from table or counter.
11. Do not cover cord with throw rugs, runners or the like. Place cord away from areas where there is traffic to avoid tripping.

12. Do not operate any appliance with a damaged cord or plug. If the appliance malfunctions or has been dropped or damaged in any manner, contact a qualified electrician.

NOTE: Repairs made by unqualified persons will void this product's warranty.

13. To disconnect fan from outlet, grip firmly plug and pull from wall outlet. Do not yank on the cord.
14. Operate this fan only as it is described in this manual.
15. This appliance is not intended for use by persons (including children) with reduced physical, sensory or mental capabilities, or lack of experience and knowledge, unless they have been given supervision or instruction concerning use of the appliance by a person responsible for their safety.

NOTE: There are no serviceable parts in this unit. Do not attempt to disassemble.



WARNING Never use this fan with any solid-state speed control device. Doing so may cause a fire and/or shock hazard.

ASSEMBLY

Figure 1: Fan components.

Remove the fan from the packaging, and ensure all the components are included.

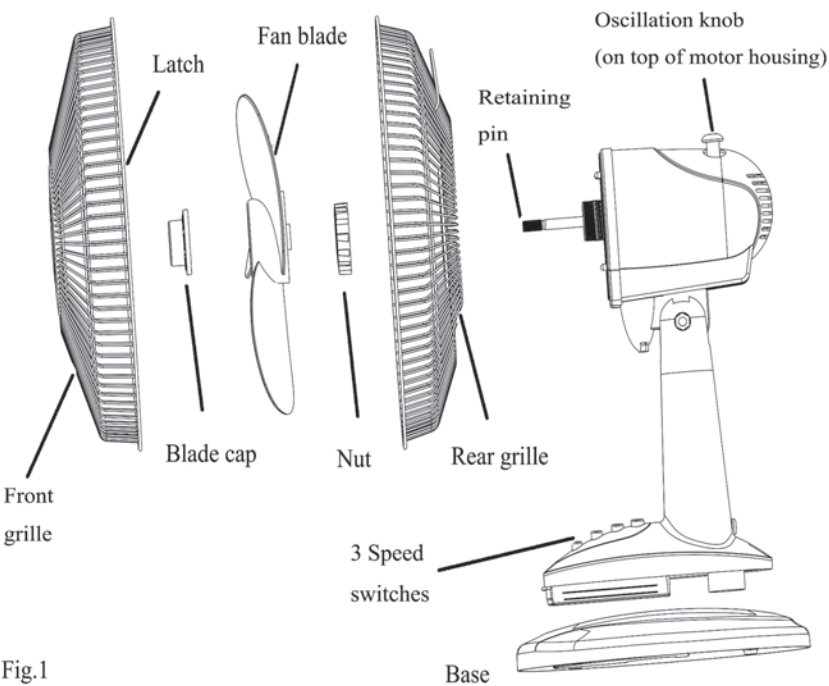


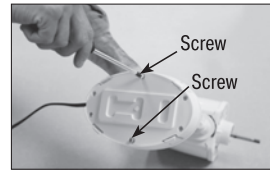
Fig.1

ASSEMBLY

(Continued)

Assembly is required to use this fan.

Step 1. Remove two (2) screws from base of fan and save them for **Step 2**.



Step 2. Place power cord wire through opening of plastic fan base. With cord opening properly positioned, snap plastic fan base onto fan body. Re-assemble screws removed in **Step 1**.



Step 3. Remove the Blade Cap by twisting it CLOCKWISE while holding the retaining pin tightly.

NOTE: Threads are reversed.
Loosen = Clockwise.



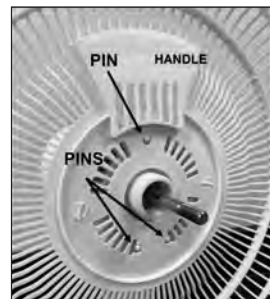
Step 4. Loosen and remove the locknut from the motor housing to attach rear grille.

NOTE: Loosen = Counter-clockwise.



Step 5. Assemble Rear Grille onto Motor Housing. Rear Grille should fit into alignment pins on fan motor housing as shown.

NOTE: Handle should be on top.



ASSEMBLY

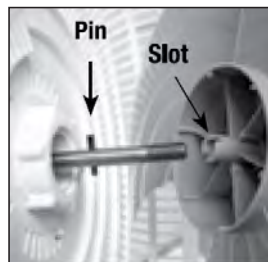
(Continued)

Step 6. Thread Locknut onto Motor Housing to lock Rear Grille in place.

NOTE: Tighten = Clockwise.

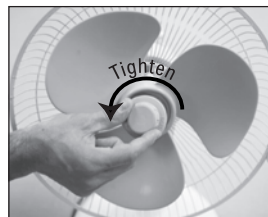


Step 7. Remove any protective covering over retaining pin before fan blade installation. Place fan blade onto retaining pin. Notice the pin on retaining pin should fit into slots of fan blade.



Step 8. Thread blade cap onto threaded end of the motor shaft.

NOTE: Threads are reversed at this connection.
Tighten = Counter-clockwise



Step 9. With logo upright, attach Front Grille to Rear Grille by snapping them together. Be sure all 8 clips are secure. Do not operate fan without grille in place.



USAGE

FAN OPERATION: Always operate the fan in the upright position following all instructions and recommendations listed in this manual.

FAN LOCATION: Place the fan in the area of the room that will provide proper circulation.

FAN CONNECTION: Plug fan directly into 120 volt A.C., 60 Hz wall outlet. Be sure plug fits tightly in outlet. A loose connection may cause overheating and damage to the plug or fan. Avoid the use of extension cords due to risk of fire. If an extension cord must be used, the cord must be minimum 14 AWG and rated not less than 1875 watts

NOTE: To prevent overloading a circuit, do not plug the fan into a circuit that is servicing other electrical needs.

CONTROL PANEL

TURNING FAN ON/OFF: Place fan on stable level surface. Plug fan into properly grounded outlet. To start the fan, press desired speed button: 1 - LOW, 2 - MED, 3 - HIGH. Press 0 - OFF to discontinue use. Unplug fan when not in use.



ON/OFF
SPEED CONTROL

OSCILLATION: To start fan oscillation, press Oscillation Control Knob (located above motor housing) down. To stop oscillation function pull Oscillation Control Knob up while the fan is in any oscillation position.



OSCILLATION
CONTROL KNOB


TILT: This provides steady breeze distribution. To target the breeze, steady the base of the fan with one hand and grip the motor housing with the other. Carefully tilt the head of the fan until it reaches the desired angle. Be careful not to tilt the head back further than it is intended to go. Pushing it too far will damage the unit.

 **CAUTION** TO PREVENT ELECTRICAL SHOCK, MATCH WIDE BLADE OF PLUG TO WIDE SLOT, AND FULLY INSERT.

SPECIFICATIONS

MODEL	1VAFD16
VOLTAGE	120V AC, 60Hz
WEIGHT	4.28 lbs (1.94 kg)
DIMENSIONS	16.0" x 10.6" x 21.6" (41 x 27 x 55 cm)

CLEANING

 **CAUTION** Before cleaning the fan be sure to disconnect power cord from the plug. Clean the grille surface with a clean damp cloth. Do not use harsh chemical or abrasive cleaners. DO NOT IMMERSE THE FAN OR ANY WIRES IN WATER. Allow fan to dry completely before use. Periodic grille cleaning with a vacuum will prevent dust build up. The motor is sealed and does not require any interior maintenance, cleaning or lubrication.

MAINTENANCE

The Internal motor bearings are permanently lubricated at the factory and do not require any additional lubrication.


REPAIR: DO NOT OPERATE THE FAN WITHOUT THE GRILLE IN PLACE. DO NOT USE THE FAN IF IT HAS MALFUNCTIONED OR BECOME DAMAGED IN ANY WAY.

STORAGE: Keep original carton for storage of the fan. Coil and tie the power cord to avoid damage during storage.

NOTE: Some models come with a plug where you can replace a fuse. If your model has this, please read and follow the below instructions to replace the fuse.

This product employs overload protection (fuse). A blown fuse indicates an overload or short-circuit situation. If the fuse blows, unplug the product from the outlet. Replace the fuse as per the user servicing instructions (follow product marking for proper fuse rating) and check the product. If the replacement fuse blows, a short-circuit may be present and the product should be discarded or returned to an authorized service facility for examination and/or repair.

FUSE REPLACEMENT

1. Grasp plug and remove from the receptacle or other outlet device. Do not unplug by pulling on cord. **See Fig. 1**
2. Open fuse cover by sliding open fuse access cover on top of attachment plug towards blades. **See Fig. 2**
3. Remove fuse carefully. Use a small tool to pry the end of the fuse from holder cavity. Be careful not to break glass window. **See Fig. 3**
4. Replace fuse.  **WARNING** Risk of fire. Replace fuse only with identical 2.5 or 5.0 Amp, 125 Volt fuse (3.6mm x 10mm). Be sure fuse is properly seated within its cavity.

5. Close fuse cover by sliding it back to its original closed position. **See Fig. 1**

Fig. 1



Fig. 2



Fig. 3



TROUBLESHOOTING

PROBLEM	PROBABLE CAUSE	SOLUTION
Fan is not turning on.	A. Fan is not plugged into a 120V AC, 60Hz polarized outlet/receptacle.	A. Ensure unit is in the OFF position. Plug in unit and attempt to turn on again.
	B. Breaker has tripped or fuse has been blown.	B. Please check your electrical box to confirm the breaker has not been tripped. Ensure unit is in OFF position. Plug in unit and attempt to turn on again.
		C. Attempt to plug unit into another outlet.

PROBLEM	PROBABLE CAUSE	SOLUTION
Oscillation function is not working	The oscillation pin has not been activated	Simply pull press the oscillation pin down to start the oscillation function. This can be done while the fan is operating.
Fan is on but air coming out of it is not strong enough.	There is dust built up at the back of the fan.	Turn fan OFF and unplug. Using a soft, dry cloth, wipe the back of the grille to remove any dust build-up. Plug in unit and turn fan back ON to resume normal operation.

PLEASE DO NOT ATTEMPT TO OPEN OR REPAIR THE FAN YOURSELF. DOING SO CAN CAUSE DAMAGE OR PERSONAL INJURY.

For your records, staple your sales receipt to this manual and record the following:

Date of Purchase: _____

Place of Purchase: _____

NOTE: Proof of purchase is required for all warranty claims.

NOTE: As a result of continual improvements, the design and specifications of the product within may differ slightly to the unit illustrated on the packaging.



4560 W. 160th Street
Cleveland, OH 44135

833-950-1185 | support@visionairproducts.com
www.visionairproducts.com