



Welcome to the Weiser family!

This guide will get you ready to install your new knob.

If you have any issues, please visit our support center: <https://ca.weiserlock.com/support> or call us at 1-800-501-9471.

*Tools

wood block

*Tools will depend on install type

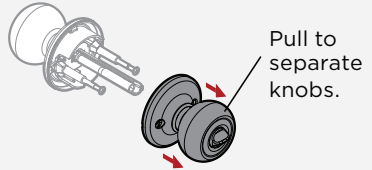
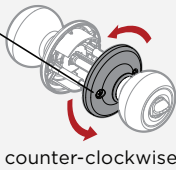
1 Separate knobs (if pre-assembled) If installing a non-rotating knob, skip to step 2

A



B

Twist the side with the holes.



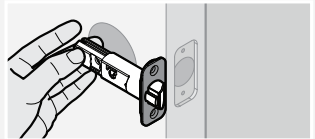
C

Set knobs aside until **step 4**.

2 Adjust the backset of the latch (if needed)

A

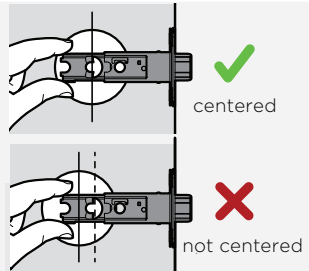
Hold the latch in front of the door hole, with the latch face flush against the door edge.



B

If the latch holes are centered in the door hole, no adjustment is required. Proceed to step 3.

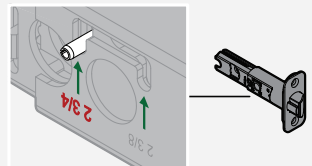
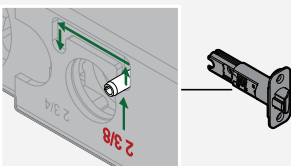
If the latch holes are **NOT** centered, adjust latch. See “Latch Adjustment” (step 2C).



C

Latch Adjustment (only if needed)

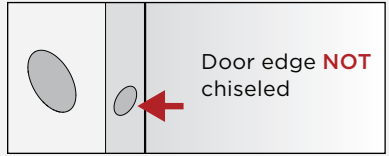
Move the pin to extend the latch.



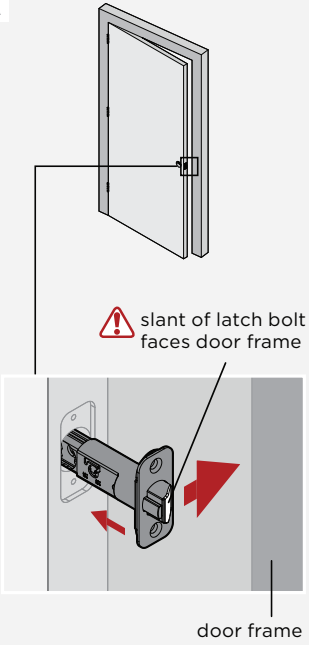
3 Install latch



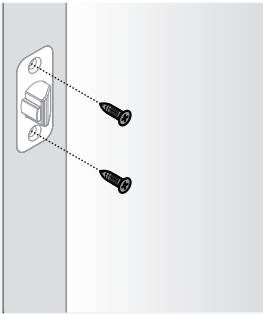
or



A

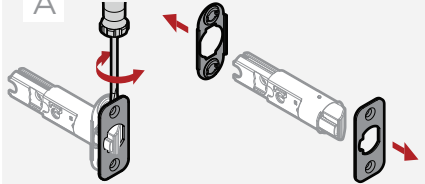


B



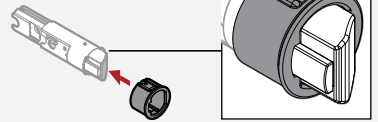
A

Remove plates



B

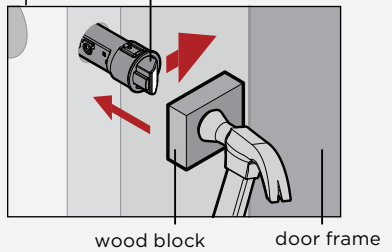
Install drive-in collar



C

Use hammer and wood block to tap in latch without damaging it.

⚠ slant of latch bolt faces door frame

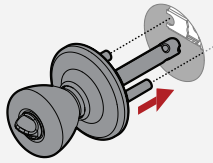


4 Install Passage/Privacy knobs

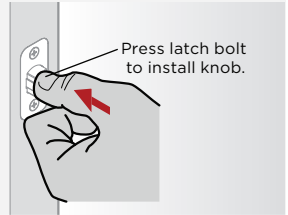
A



IMPORTANT: If installing a passage lock on an entry door, make sure the knob with the screw holes is on the interior side of the door.

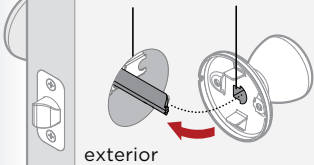


interior



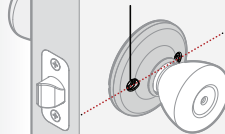
B

Align round edges.



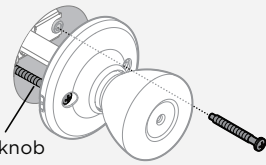
C

Ensure holes are horizontal.



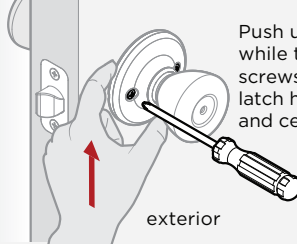
D

Tip: Pull knob slightly away from door to see where screws insert.



E

Push up on knob while tightening screws to keep latch horizontal and centered.

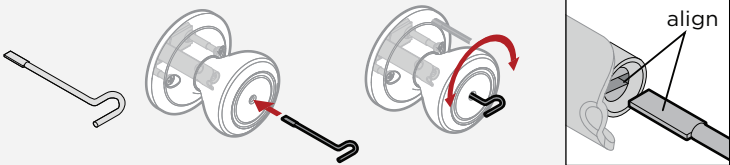


Installed *Passage/Privacy knobs*, now proceed to [step 5](#)



For Privacy Locks **ONLY**

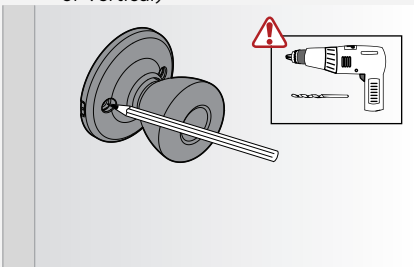
Your emergency tool may look different depending on your model.



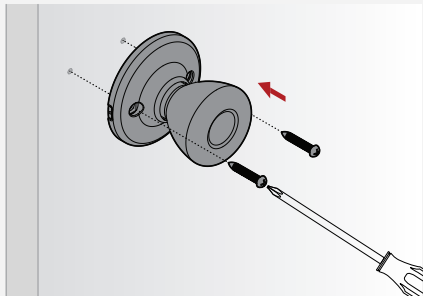
4 Install Nonrotating knobs

A

Mark drill holes using the knob, then drill 1/8" (3 mm) 1/2" (13 mm) deep. (Screws may be positioned horizontal or vertical)

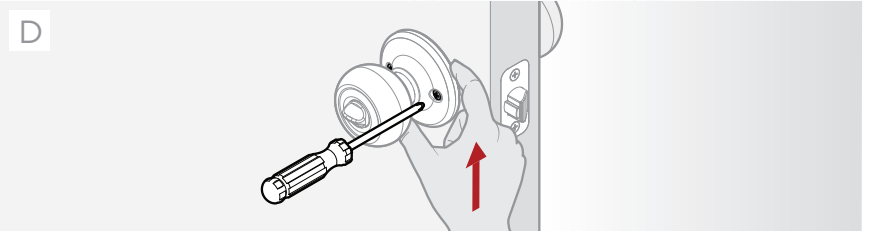
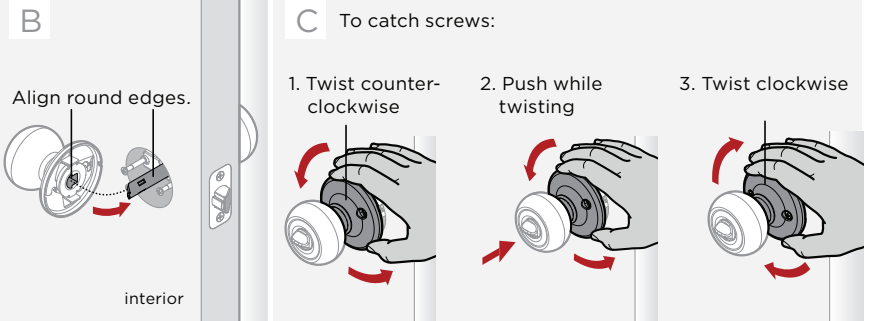
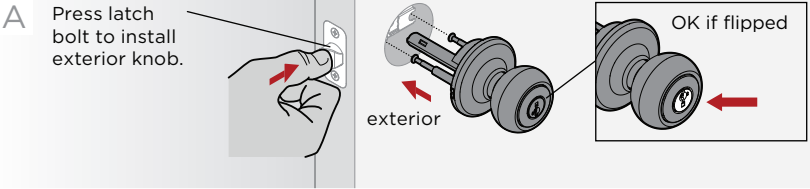


B



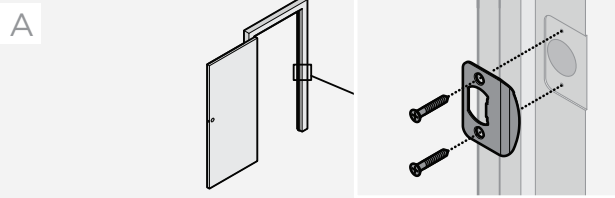
Installed *Nonrotating knob*, now proceed to [step 5](#)

4 Install Entry knobs



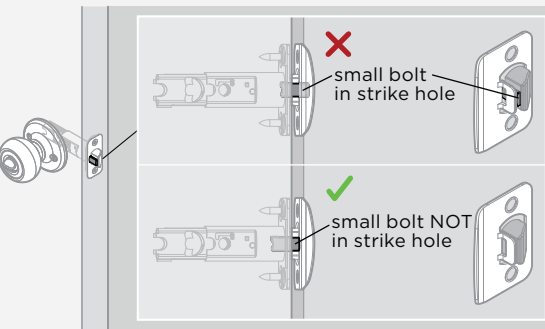
Installed *Entry knobs*, now proceed to [step 5](#)

5 Install strike to door frame

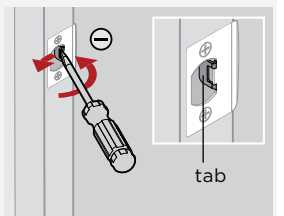


B Close door, test latch operation and make adjustments as needed:

If small bolt of latch enters strike hole, reposition strike.



If latch is loose in the strike, adjust the strike tab so it grips the latch bolt better when the door is closed.



SmartKey Rekeying Instructions



SMARTKEY SECURITY.

ONE KEY FOR ALL YOUR LOCKS™

Easily re-key yourself

Reset tool goes here

WITH PROTECTION AGAINST ADVANCED BREAK-IN TECHNIQUES

The lock you can re-key yourself in seconds for any situation, including:

- Recently Moved
- Lost Keys
- Multiple Doors
- Carry Fewer Keys

⚠ WARNING: This Manufacturer advises that no lock can provide complete security by itself. This lock may be defeated by forcible or technical means, or evaded by entry elsewhere on the property. No lock can substitute for caution, awareness of your environment, and common sense. Builder's hardware is available in multiple performance grades to suit the application. In order to enhance security and reduce risk, you should consult a qualified locksmith or other security professional.