

The Ultimate Kitchen Companion



- ✓ Half Almondmilk, half Coconut Cream
- ✓ Perfect for cooking and baking
- ✓ A 1-for-1 swap with dairy half & half

CALIFIA
FARMS®

@califiafarms | sales@califiafarms.com

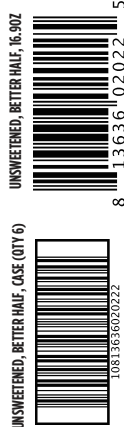
Plant-Based Better Half Creamers



**Unsweetened,
16.9oz**

Nutrition Facts	
About 16 Servings per Container	
Serving size	2 tbsp (30 mL)
Amount Per Serving	
Calories	15
% Daily Value*	
Total Fat 1 g	1%
Saturated Fat 0.5 g	3%
Trans Fat 0 g	
Cholesterol 0 mg	0%
Sodium 15 mg	1%
Total Carbohydrate 0 g	0%
Dietary Fiber 0 g	0%
Total Sugar 0 g	
Includes 0 g Added Sugars	0%
Protein 0 g	
Vit. D 0 mcg 0%	Calcium 50 mg 2%
Iron 0 mg 0%	Potass. 30 mg 0%

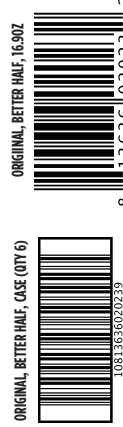
*The % Daily Value (DV) tells you how much a nutrient in a serving of food contributes to a daily diet. 2,000 calories a day is used for general nutrition advice.



**Original,
16.9oz**

Nutrition Facts	
About 16 Servings per Container	
Serving size	2 tbsp (30 mL)
Amount Per Serving	
Calories	20
% Daily Value*	
Total Fat 1 g	1%
Saturated Fat 0.5 g	3%
Trans Fat 0 g	
Cholesterol 0 mg	0%
Sodium 20 mg	1%
Total Carbohydrate 1 g	0%
Dietary Fiber 0 g	0%
Total Sugar 1 g	
Includes less than 1 g Added Sugars	2%
Protein 0 g	
Vit. D 0 mcg 0%	Calcium 50 mg 2%
Iron 0 mg 0%	Potass. 30 mg 0%

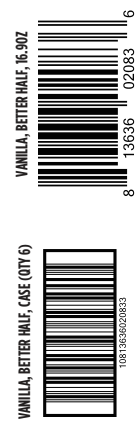
*The % Daily Value (DV) tells you how much a nutrient in a serving of food contributes to a daily diet. 2,000 calories a day is used for general nutrition advice.



**Vanilla,
16.9oz**

Nutrition Facts	
About 16 Servings per Container	
Serving size	2 tbsp (30 mL)
Amount Per Serving	
Calories	15
% Daily Value*	
Total Fat 1 g	1%
Saturated Fat 0.5 g	3%
Trans Fat 0 g	
Cholesterol 0 mg	0%
Sodium 15 mg	1%
Total Carbohydrate 0 g	0%
Dietary Fiber 0 g	0%
Total Sugar 0 g	
Includes 0 g Added Sugars	0%
Protein 0 g	
Vit. D 0 mcg 0%	Calcium 50 mg 2%
Iron 0 mg 0%	Potass. 30 mg 0%

*The % Daily Value (DV) tells you how much a nutrient in a serving of food contributes to a daily diet. 2,000 calories a day is used for general nutrition advice.



ITEM CODE: 420183

INGREDIENTS: ALMONDMILK (WATER, ALMONDS), COCONUT CREAM, SUNFLOWER LECITHIN, NATURAL FLAVOR, CALCIUM CARBONATE, SEA SALT, POTASSIUM CITRATE, LOCUST BEAN GUM, GELLAN GUM.

ITEM CODE: 420182

INGREDIENTS: ALMONDMILK (WATER, ALMONDS), COCONUT CREAM, CANE SUGAR, SUNFLOWER LECITHIN, NATURAL FLAVOR, CALCIUM CARBONATE, SEA SALT, POTASSIUM CITRATE, LOCUST BEAN GUM, GELLAN GUM.

ITEM CODE: 420256

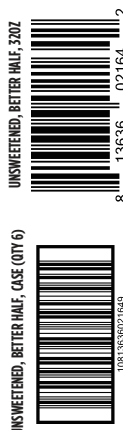
INGREDIENTS: ALMONDMILK (WATER, ALMONDS), COCONUT CREAM, NATURAL VANILLA FLAVOR WITH OTHER NATURAL FLAVOR, SUNFLOWER LECITHIN, CALCIUM CARBONATE, MONK FRUIT JUICE CONCENTRATE, SEA SALT, POTASSIUM CITRATE, LOCUST BEAN GUM, GELLAN GUM.



**Unsweetened,
32oz**

Nutrition Facts	
32 Servings per Container	
Serving size	2 tbsp (30 mL)
Amount Per Serving	
Calories	15
% Daily Value*	
Total Fat 1 g	1%
Saturated Fat 0.5 g	3%
Trans Fat 0 g	
Cholesterol 0 mg	0%
Sodium 15 mg	1%
Total Carbohydrate 0 g	0%
Dietary Fiber 0 g	0%
Total Sugar 0 g	
Includes 0 g Added Sugars	0%
Protein 0 g	
Vit. D 0 mcg 0%	Calcium 50 mg 2%
Iron 0 mg 0%	Potass. 30 mg 0%

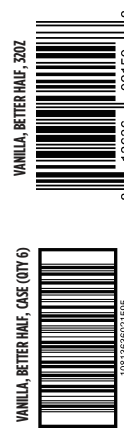
*The % Daily Value (DV) tells you how much a nutrient in a serving of food contributes to a daily diet. 2,000 calories a day is used for general nutrition advice.



**Vanilla,
32oz**

Nutrition Facts	
32 Servings per Container	
Serving size	2 tbsp (30 mL)
Amount Per Serving	
Calories	15
% Daily Value*	
Total Fat 1 g	1%
Saturated Fat 0.5 g	3%
Trans Fat 0 g	
Cholesterol 0 mg	0%
Sodium 15 mg	1%
Total Carbohydrate 0 g	0%
Dietary Fiber 0 g	0%
Total Sugar 0 g	
Includes 0 g Added Sugars	0%
Protein 0 g	
Vit. D 0 mcg 0%	Calcium 50 mg 2%
Iron 0 mg 0%	Potass. 30 mg 0%

*The % Daily Value (DV) tells you how much a nutrient in a serving of food contributes to a daily diet. 2,000 calories a day is used for general nutrition advice.



ITEM CODE: 420295

INGREDIENTS: ALMONDMILK (WATER, ALMONDS), COCONUT CREAM, SUNFLOWER LECITHIN, NATURAL FLAVOR, CALCIUM CARBONATE, SEA SALT, POTASSIUM CITRATE, LOCUST BEAN GUM, GELLAN GUM.

ITEM CODE: 420294

INGREDIENTS: ALMONDMILK (WATER, ALMONDS), COCONUT CREAM, NATURAL VANILLA FLAVOR WITH OTHER NATURAL FLAVOR, SUNFLOWER LECITHIN, CALCIUM CARBONATE, MONK FRUIT JUICE CONCENTRATE, SEA SALT, POTASSIUM CITRATE, LOCUST BEAN GUM, GELLAN GUM.



CARRAGEENAN
FREE



GLUTEN FREE



KOSHER



SOY-FREE



VEGAN



NON
GMO
Project
VERIFIED
nongmoproject.org

SHAKE WELL FOR BEST TASTE. REFRIGERATE AFTER OPENING. DO NOT FREEZE • DISTRIBUTED BY CALIFIA FARMS LLC, BAKERSFIELD, CA 93308

16.9 FL OZ CASE PACK: 6 CASE CUBE: 0.2FT³ CASES PER PALLET: 240 CASE TI-HI: 30 X 8 PALLET CUBE: 53.89 FT³ PALLET WEIGHT: 1865 LB
32 FL OZ CASE PACK: 6 CASE CUBE: 0.3 FT³ CASES PER PALLET: 150 CASE TI-HI: 30 X 5 PALLET CUBE: 49.522 FT³ PALLET WEIGHT: 2113 LB