

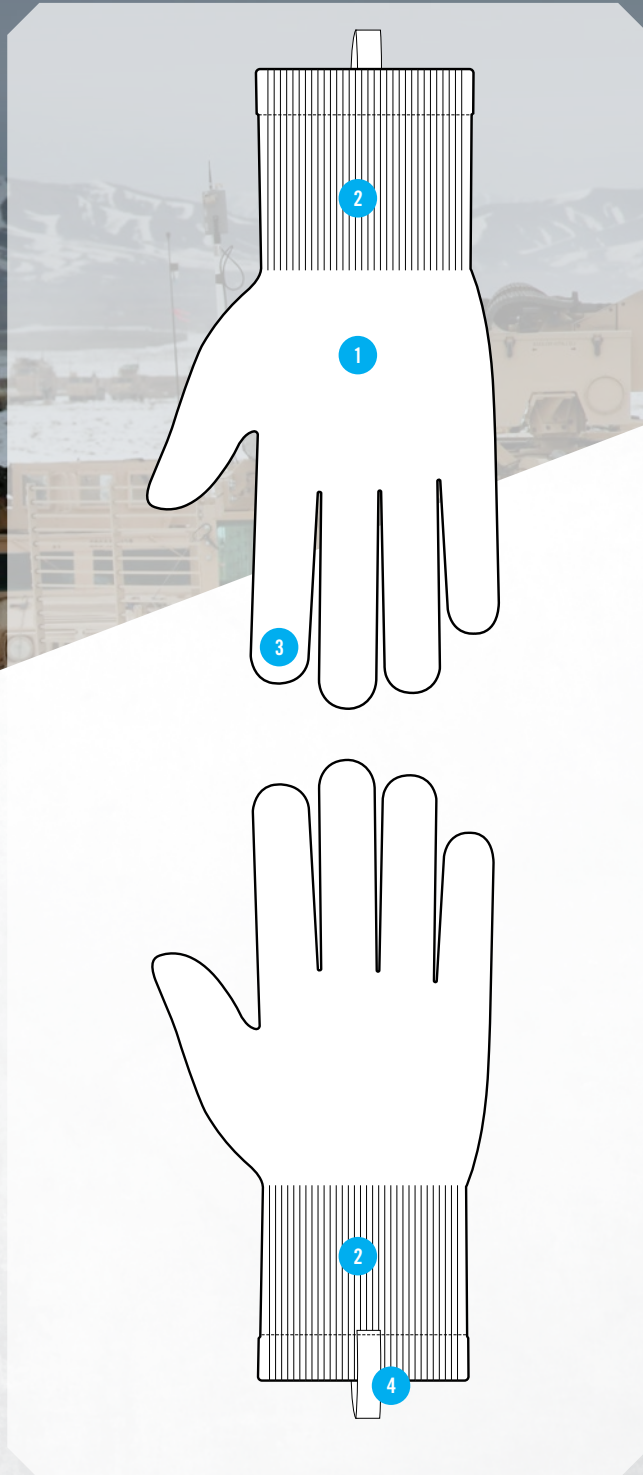


BERRY COMPLIANT CWGS KNIT LINER



USA
1-800-222-4296

Mechanix Wear LLC
27335 Tourney Rd. 3rd Floor
Valencia, CA 91355
www.mechanix.com



TACTICAL COLD WEATHER GLOVE SYSTEM

Featuring a water resistant, structured stretched-fleece construction for maximum durability, the Knit Liner also comes with elastic wrists and jersey backed cuffs to seal out the harsh elements.

FEATURES

- 1 Wool blended knit for quick-drying warmth and comfort while maintaining no-melt, no-drip properties.
- 2 Ribbed knit cuff cuff deflects cold elements ensuring moisture stays out.
- 3 Touch Screen capable index finger leather panel.
- 4 Carabiner loop for quick access and storage.



MACHINE WASHABLE



TOUCHSCREEN TECHNOLOGY

INTENDED USES

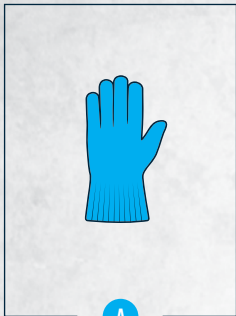
- Military
- Law Enforcement
- Shooting Sports
- Maintenance Repair Operations

SIZE	S-008	M-009	L-010	XL-011	XXL-012
COLOR	CWGS5F-B72-COYOTE				

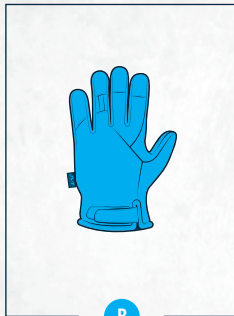
BERRY COMPLIANT CWGS KNIT LINER

MULTI-LAYER INSULATION

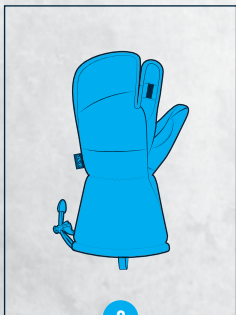
The Mechanix Wear® Cold Weather Glove System utilizes a multi-glove design to easily provide highly adaptable, customizable protection against the full range of winter weather conditions.



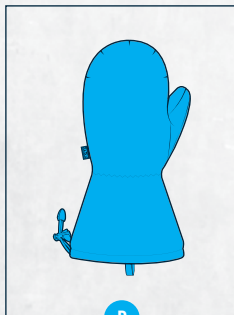
A
KNIT LINER



B
INTERMEDIATE LAYER



C
HEAVY INSULATION MITTEN



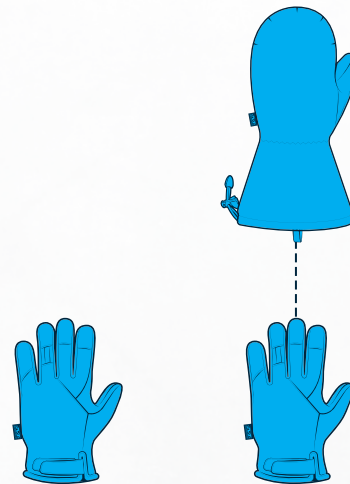
D
OUTER SHELL MITTEN

5 PAIRING OPTIONS AVAILABLE

- Modularity / Configurable to Individual Needs
- Designed to Meet the Requirements of the US Army From 40°F to -40°F
- Moisture managing / Wicking Insulation
- Water Resistant

INTERMEDIATE COMBINATION

Up to **2 LAYERS** of insulation

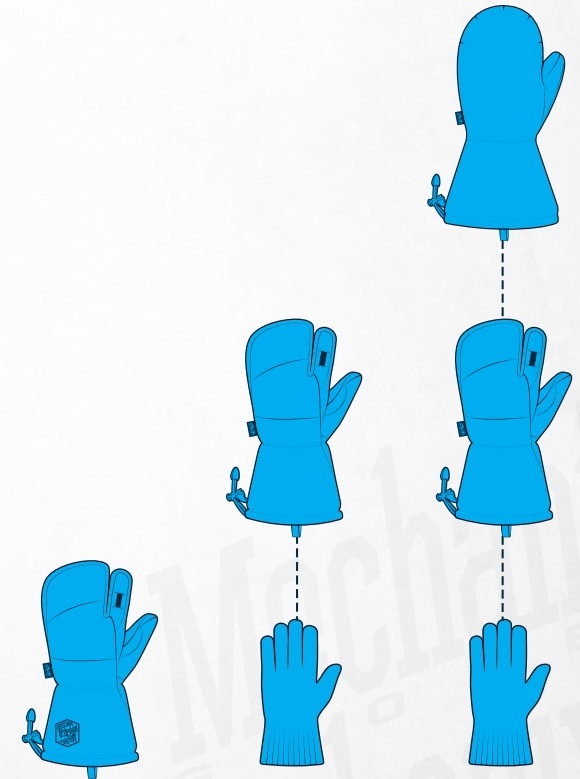


B

B D

HEAVY INSULATION COMBINATION

Up to **3 LAYERS** of insulation



C

A C

A C D