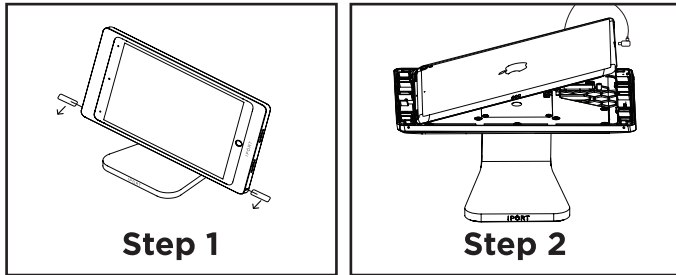
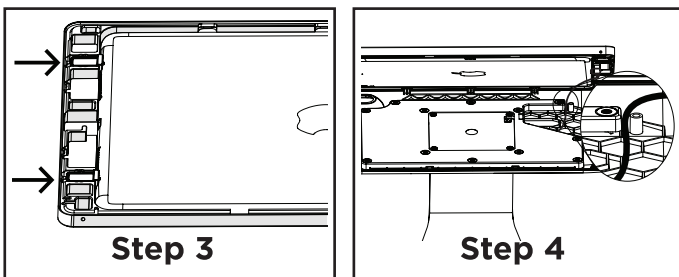


iPad Install

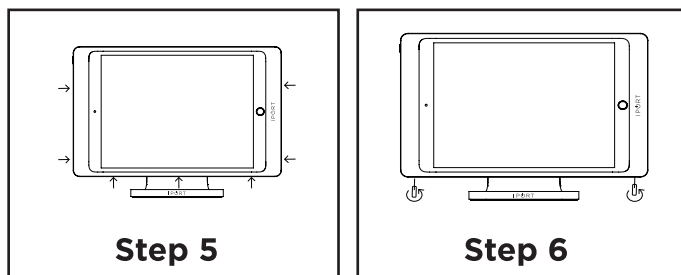
- 1) Insert the IPORT Security tool into the oval holes along each side of the case and articulate up to separate the bezel from the attached case.
- 2) Flip the bezel over and place on the shell. Insert the Lightning Cable in the bottom of the iPad and place the iPad in the bezel.



- 3) Use a flat head screw driver or the IPORT Security Tool to slide the retention clips inward towards the middle of the iPad to lock the iPad into bezel.
- 4) Flip the iPad and bezel over and hook the bezel to the top of the case. Make sure to hook the cable in the retention shown.



- 5) Snap the bezel to the case by pressing firmly around the perimeter of the case. Note there are 3 clips at the bottom and 2 on each side.
- 6) Use the IPORT Security tool to lock the case to the bezel by turning counter clockwise. For removal turn the security screw clockwise and review Step 1.

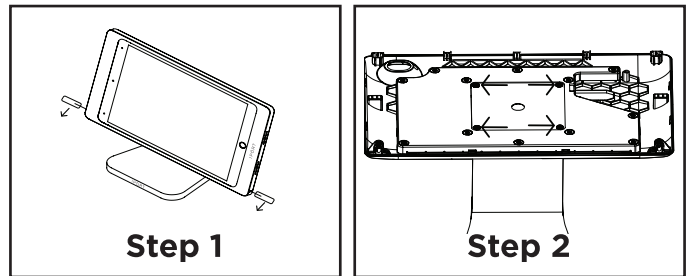


- 7) Plug in the USB cable into the provided power supply.

Change from Landscape to Portrait

The Luxe Kiosk ships with the iPad in a Landscape orientation. Orientation can be changed to portrait simply by removing 4 screws and reinstalling the iPads Case as shown below.

- 1) Remove the Bezel from the Case, see Step 1 in the iPad Install section.
- 2) Remove the 4 Phillips screws with a screw driver.



- 3) Rotate the bezel 90° clockwise. Insert the cable into the lower cable routing location.
- 4) Place Case back on the Base and re-install the 4 screws removed in Step 2 above and continue to Step 2 of iPad Install.

