



BERRY COMPLIANT CWGS OUTER SHELL MITTEN



USA
(800) 222-4296

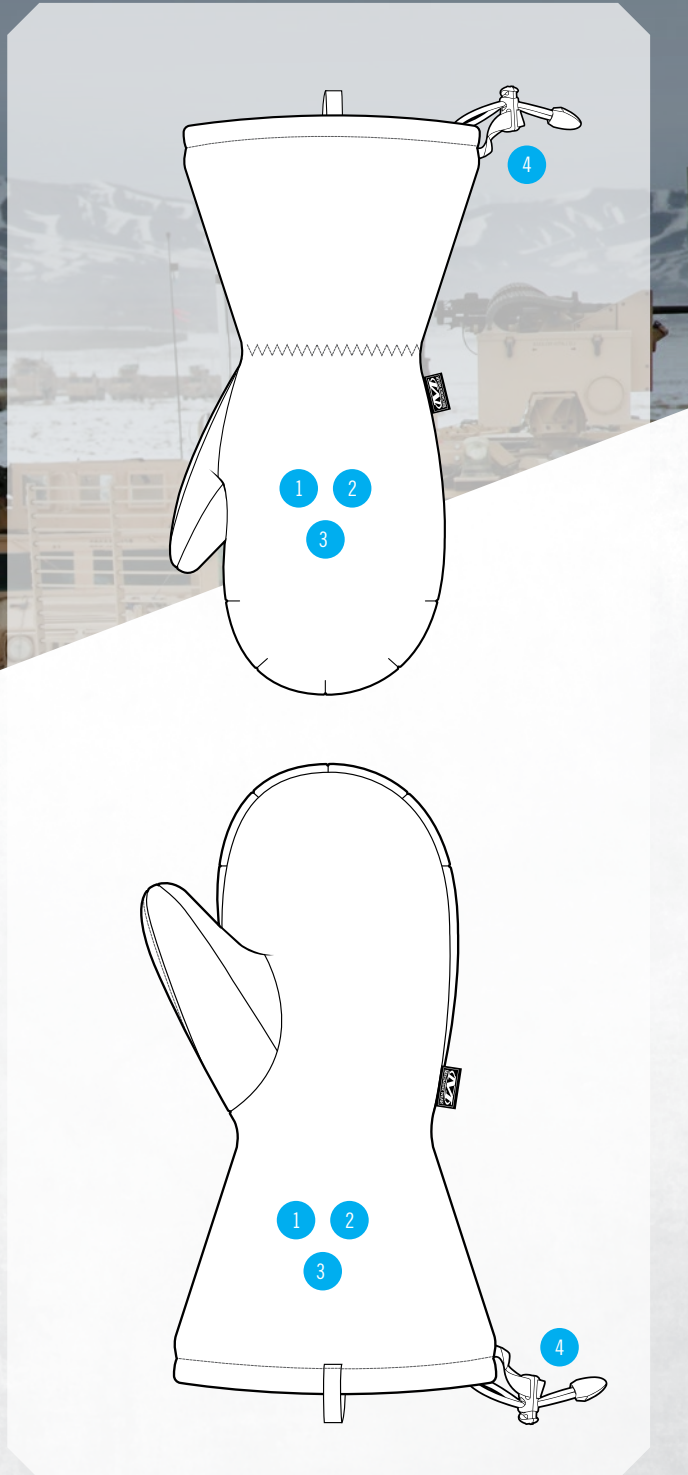
Spain
+34 93 628 22 00

Canada
(877) 278-5822

Australia
1 300-731 336

Japan
03 4590 0066

MECHANIX WEAR LLC
www.mechanix.com



TACTICAL COLD WEATHER GLOVE SYSTEM

The Outer Shell Mitten of the Mechanix Wear® Cold Weather Glove System provides superior protection, comfort and ease of use thanks to its water resistant construction, 40g of Thinsulate™ insulation, and fast-pull, secure fit, CordLoc feature.

FEATURES

- 1 Water resistant PolarTec® Neoshell® construction protects from the elements and easily compacts for storage and transportation.
- 2 40g Thinsulate™ insulation liner keep hands warm and retains heat for extended use.
- 3 Reversible shell to help amplify or minimize visibility.
- 4 Cordloc closure delivers a fast-pull secure fit and an easy quick release.



INTENDED USES

- Multipurpose
- Maintenance & Repair
- Equipment Operations
- DIY Home Improvement

SIZE	S-008	M-009	L-010	XL-011	XXL-012
COLOR	CWGSSM-B68 MULTICAM				

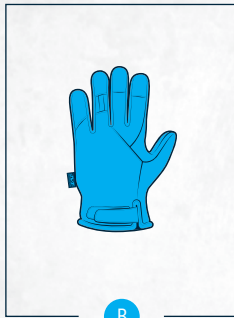
BERRY COMPLIANT CWGS OUTER SHELL MITTEN

MULTI-LAYER INSULATION

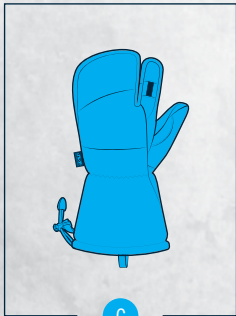
The Mechanix Wear® Cold Weather Glove System utilizes a multi-glove design to easily provide highly adaptable, customizable protection against the full range of winter weather conditions.



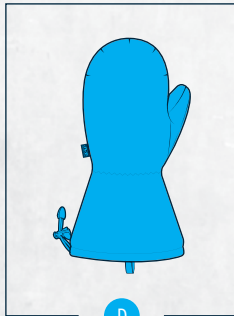
A
KNIT LINER



B
INTERMEDIATE LAYER



C
HEAVY INSULATION MITTEN



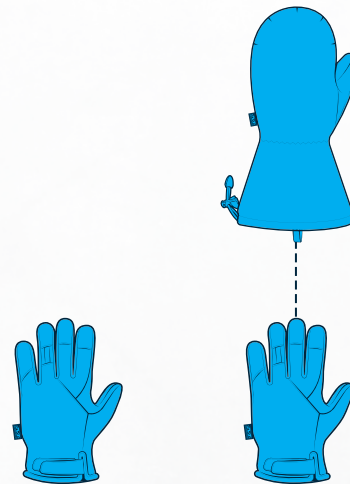
D
OUTER SHELL MITTEN

5 PAIRING OPTIONS AVAILABLE

- Modularity / Configurable to Individual Needs
- Designed to Meet the Requirements of the US Army From 40°F to -40°F
- Moisture managing / Wicking Insulation
- Water Resistant

INTERMEDIATE COMBINATION

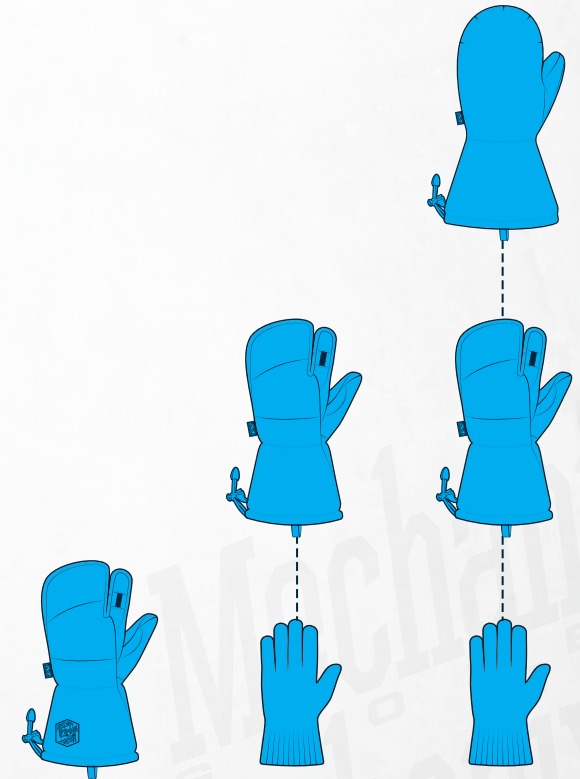
Up to **2 LAYERS** of insulation



B **B D**

HEAVY INSULATION COMBINATION

Up to **3 LAYERS** of insulation



C **A C** **A C D**