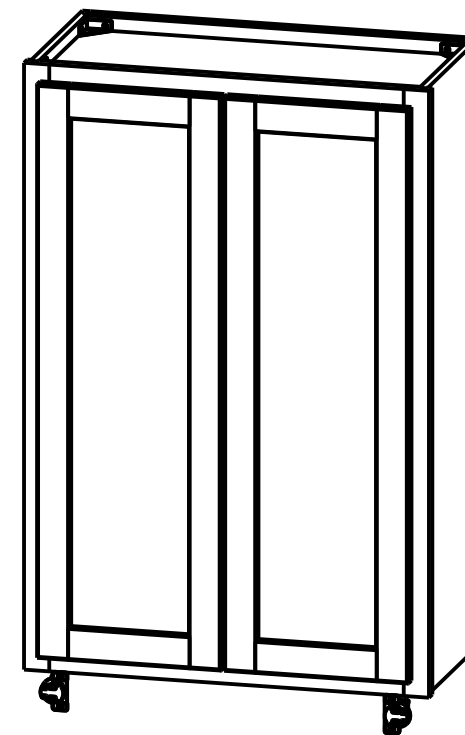
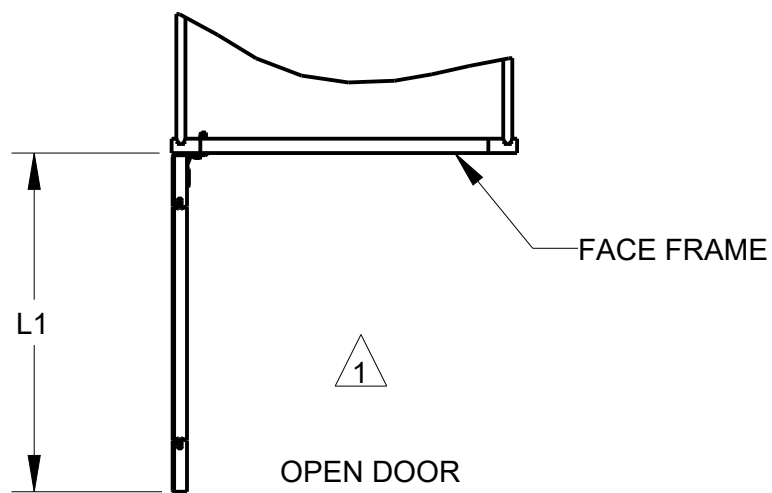
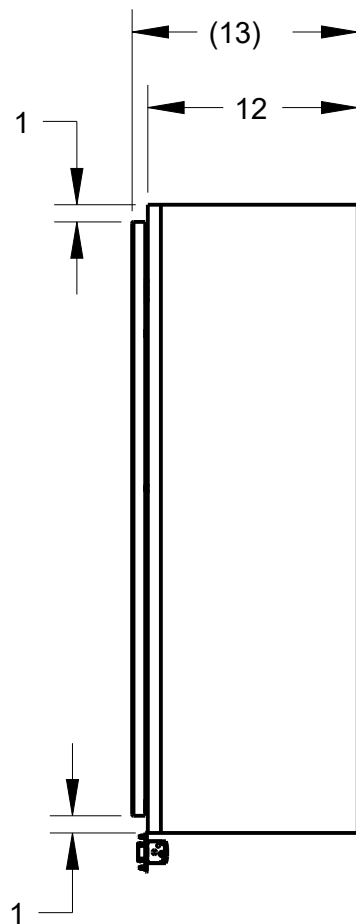
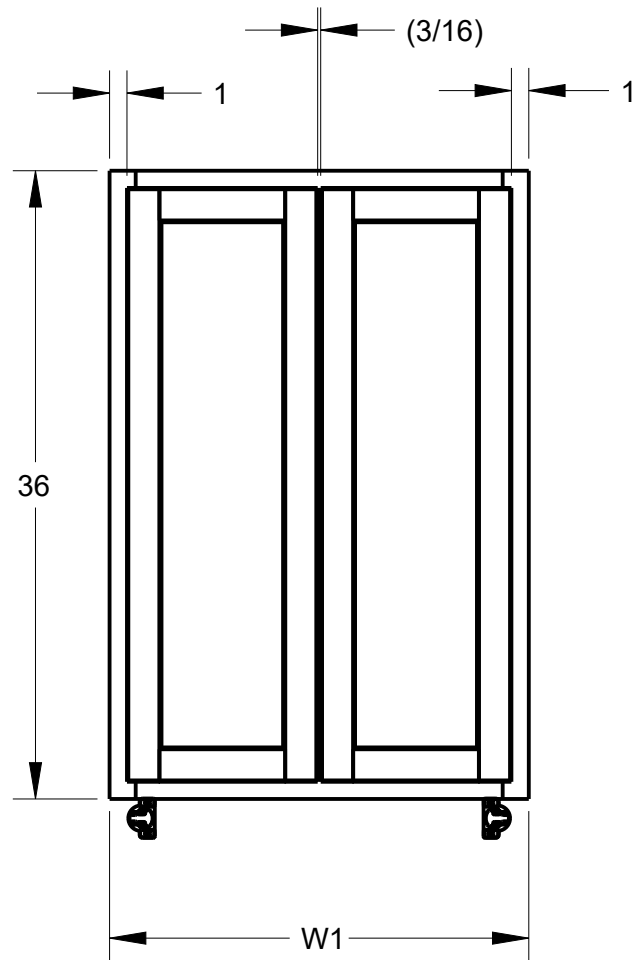


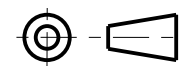
NOTES:

1 OPEN DOOR VIEW INCLUDES HINGE SPACE OFFSET.



| PRODUCT | W1 | L1 | DOOR SIZE |
|---------|-----|----------|-----------------------------|
| | | | ROUNDED TO THE NEAREST 1/32 |
| W2436 | 24" | 11 1/16" | 10 15/16" X 34 1/32" |
| W2736 | 27" | 12 9/16" | 12 7/16" X 34 1/32" |
| W3036 | 30" | 14 1/16" | 13 29/32" X 34 1/32" |
| W3336 | 33" | 15 9/16" | 15 15/32" X 34 1/32" |
| W3636 | 36" | 17 1/16" | 16 29/32" X 34 1/32" |

THIRD ANGLE PROJECTION



MATERIAL

N/A

FINISH

N/A

DRAWN BY
ANDY BROWN

DESIGNED BY
NORTHPOINT

APPROVED BY
E.GOLESTANYAN

DATE
03MAR2021

DATE

DATE
11MAR2021

**hardware
resources**

DESCRIPTION

W2436, W2736, W3036, W3336, W3636
HALF OVERLAY

DRAWING NUMBER
W2436-W2736W3036W3336W3636_HALF

SIZE
A3

SCALE
0.100

REV
A

SHEET
1 / 1

PRODUCT SHOWN W2436

DOCUMENT STATUS Released

HARDWARE RESOURCES RESERVES THE RIGHT TO CHANGE SPECIFICATIONS WITHOUT NOTICE.
IN CASE OF A DISCREPANCY, ACTUAL PART GEOMETRY SUPERSEDES THIS DOCUMENT.

THE INFORMATION CONTAINED WITHIN THIS DRAWING IS THE SOLE PROPERTY OF HARDWARE RESOURCES INC. ANY
REPRODUCTION IN PART OR WHOLE WITHOUT WRITTEN PERMISSION OF HARDWARE RESOURCES INC. IS PROHIBITED.