

How to Use Hand Tools to Apply 2-part 1/4" Eyelets with Inserts

Eyelets are so versatile. Use them for surface decoration or to lace up garments, totes, costumes and accessories. Choosing an eyelet style that is two-part with an insert is the best way to achieve a tight fit to your fabric. The insert acts like an additional fabric layer to support and stabilize the eyelet, eliminating the need to reinforce with extra interfacing. The finished eyelet sits tight against the fabric, giving it a professional finished appearance.

The measurement indicates the interior diameter. A 1/4" two-part eyelet has a finished interior dimension of 1/4".

You will need the following:

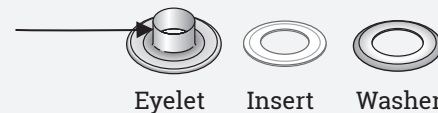
- Your project, hemmed
- 2-part eyelets, #730
- Eyelet tools, #730T
NOTE: Kits #730-33-T, #730-37-T and #730-65-T include the tools.
- Straight pins – any style
- Marking pencil
- Hammer
- Sharp scissors

Optional:
Fray Check®

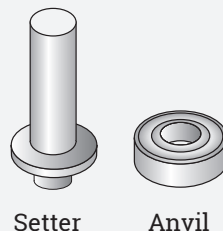
What are the parts called?

Eyelet:

The shaft of the eyelet is called the post



Tools:



ALTERNATE NAMES

Did you know that eyelets are often called grommets? Smaller sizes are traditionally referred to as eyelets, while larger sizes are usually called grommets, but don't let the name fool you. Packaging names seem to be interchangeable! Choose the size you want for appearance and use, no matter what they are called.



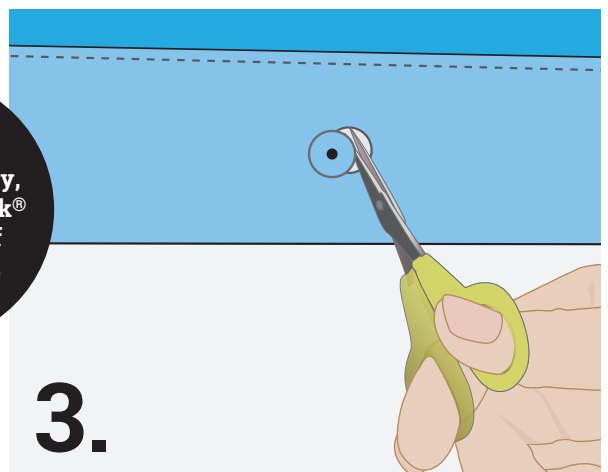
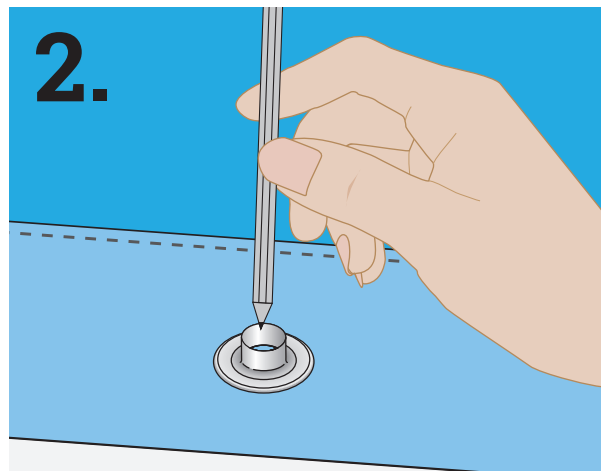
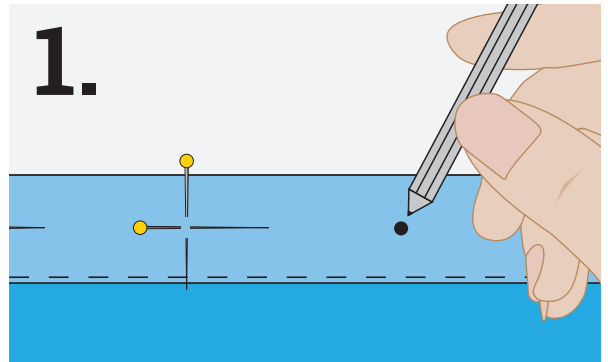
TECHNIQUE TUTORIAL

How to Use Hand Tools to Apply 2-part 1/4" Eyelets with Inserts:

1. You have measured your project and placed a pin at each eyelet location. (See the tutorial – “How to Measure for Grommet and Eyelet Placement.”) Now, place a mark at each pin intersection.

2. Mark position of eyelet by tracing around inside opening of eyelet.

3. Cut a hole with small scissors. For fabrics with stretch, cut hole smaller than inside opening of eyelet.



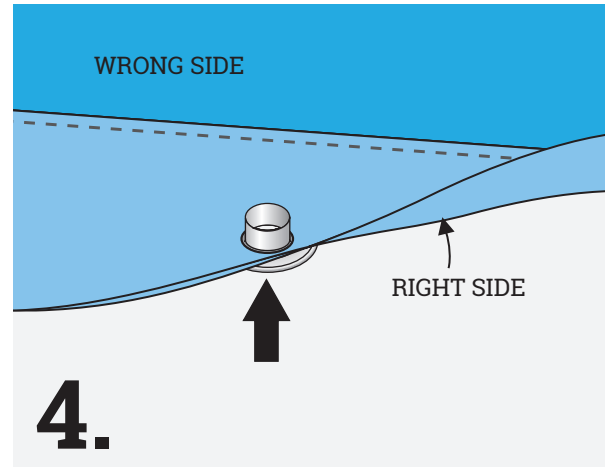
TIP: For fabric that ravels easily, apply Fray Check® to cut edges of marked circle.



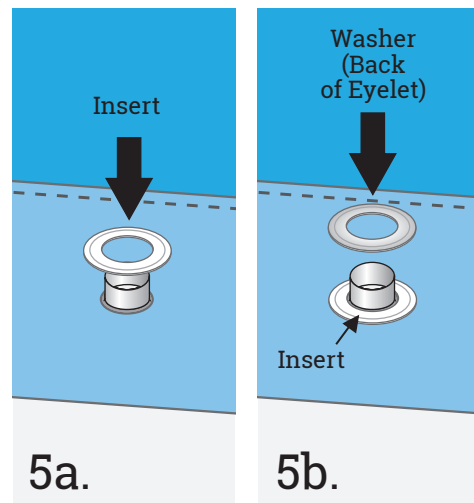
TECHNIQUE TUTORIAL

How to Use Hand Tools to Apply 2-part 1/4" Eyelets with Inserts:

4. Insert deep half of eyelet into hole from right to wrong side of fabric.



5. Place insert over center of eyelet on wrong side of fabric (5a). Place washer (back of eyelet), dome side up, over insert (5b).



How to Use Hand Tools to Apply 2-part 1/4" Eyelets with Inserts:

6. With wrong side of fabric facing up, position eyelet front on anvil and insert setter into eyelet post. Hammer gently until front and back are fitted tightly together. Post of eyelet front will roll over inside edge of washer and provide a smooth finish.

TIP: Work on a hard surface, such as cement or stone for best results.

