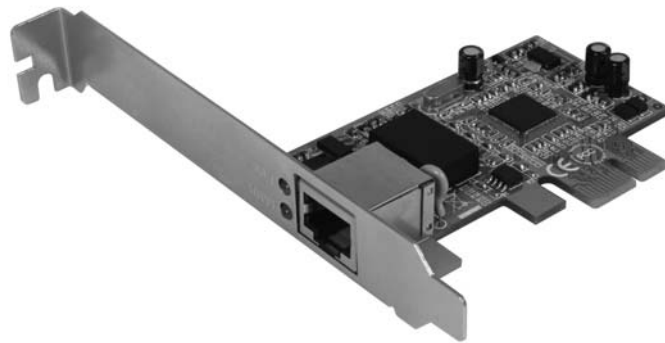


PCI Express LAN Card

10/100/1000 PCI Express LAN Card

ST1000BTPEX

Instruction Manual



Actual product may vary from photo

StarTech.com

The Professionals' Source for Hard-to-Find Computer Parts

FCC Compliance Statement

This equipment has been tested and found to comply with the limits for a Class B digital device, pursuant to part 15 of the FCC Rules. These limits are designed to provide reasonable protection against harmful interference in a residential installation. This equipment generates, uses and can radiate radio frequency energy and, if not installed and used in accordance with the instructions, may cause harmful interference to radio communications. However, there is no guarantee that interference will not occur in a particular installation. If this equipment does cause harmful interference to radio or television reception, which can be determined by turning the equipment off and on, the user is encouraged to try to correct the interference by one or more of the following measures:

- Reorient or relocate the receiving antenna.
- Increase the separation between the equipment and receiver.
- Connect the equipment into an outlet on a circuit different from that to which the receiver is connected.
- Consult the dealer or an experienced radio/TV technician for help.

Use of Trademarks, Registered Trademarks, and other Protected Names and Symbols

This manual may make reference to trademarks, registered trademarks, and other protected names and/or symbols of third-party companies not related in any way to StarTech.com. Where they occur these references are for illustrative purposes only and do not represent an endorsement of a product or service by StarTech.com, or an endorsement of the product(s) to which this manual applies by the third-party company in question. Regardless of any direct acknowledgement elsewhere in the body of this document, StarTech.com hereby acknowledges that all trademarks, registered trademarks, service marks, and other protected names and/or symbols contained in this manual and related documents are the property of their respective holders.

Table of Contents

Introduction	1
Features	1
Before You Begin	1
System Requirements	1
Contents	1
Installation	2
Specifications	5
Accessories	5
Technical Support and Warranty Information	6

Introduction

Thank you for purchasing a StarTech.com PCI Express LAN Card. This high performance 10/100/1000 BASE-T NIC is perfect for home and office use, providing a cost-efficient solution for connecting to a high speed local area network, with data transfer rates up to 1000Mbps using standard CAT5 cable, up to a maximum distance of 100 meters away.

Features

- PCI-Express Rev. 1.0 Compliant
- Supports full-duplex flow control
- Backward compatible for use with 10/100BASE-T networks
- Offers Crossover detection and Auto correction functions
- Fully compliant with IEEE 802.3, 802.3u, 802.3ab, 802.1a
- Easy Plug and Play operation

Before You Begin

System Requirements

- An available PCI Express slot
- Necessary cabling to connect card/computer to LAN
- Operating systems supported: Windows 2000, XP, XP 64-bit

Contents

This package should contain:

- PCI Express Network Card (1)
- Driver CD (1)
- Instruction manual (1)

Installation

Connecting the PCI Express Network Card to the computer motherboard:

1. Shut down all power connected to the computer, as well as all devices connected to the computer peripherally (i.e. Printers, Monitors, Scanners etc.). As an added step to ensure safe installation, unplug the power supply from the power outlet.
2. Remove the computer cover. For more detailed instruction on how to perform this step, please refer to the documentation that was included with your computer at the time of purchase.
3. Locate an empty PCI Express (x1) slot, removing the metal bracket covering the corresponding port/socket located at the back of the computer case. Please note: This card will function correctly in extended PCIe slots (e.g. x4, x16) if available.
4. Position the card above the open PCI Express slot, ensuring that the card is aligned with the entire slot. Insert the card firmly into the slot, distributing force evenly across the length of the board. Once inserted, secure the card into the adjoining socket (previously covered by metal bracket), using the correct size screw (please consult documentation that accompanied purchase of computer).
5. Replace the computer cover.
6. Connect your speakers to the appropriate speaker jacks on the sound card.
7. If unplugged, plug computer and all peripherals back in to power source. Turn your computer on.

Installing the necessary drivers:

1. After restarting your computer, a message should appear indicating that Windows has detected a hardware change. Click the **Next** button to continue with the installation.
2. Insert the CD entitled **Drivers and Utility** into your CD-ROM/DVD-ROM drive.
3. Select **Install the software automatically (recommended)** , followed by the **Next** button.

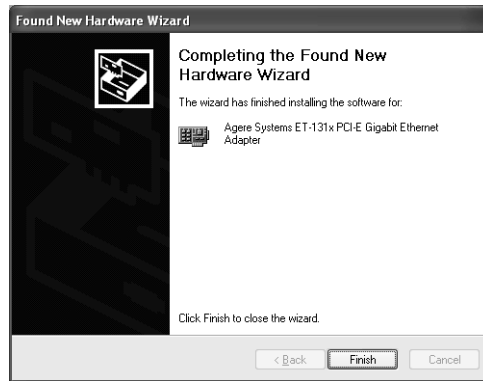


Instruction Manual

- Windows will then search for and install compatible drivers for the PCI Express network card:



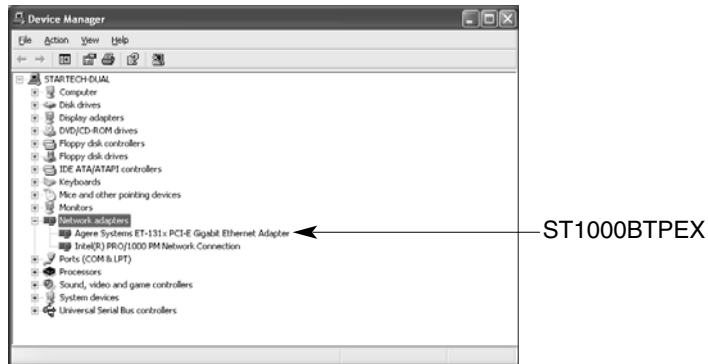
- Once the drivers have been installed, Windows will indicate that the **Found New Hardware Wizard** has completed the necessary installation:



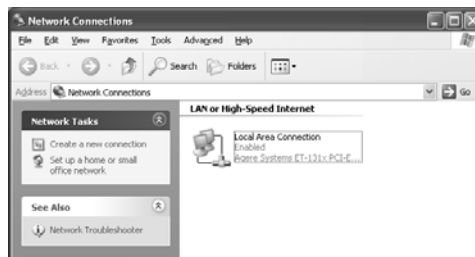
Please note: For future reference, the correct drivers for this device are located in the following path, assuming that D:\ is the designation for the CD-ROM/DVD-ROM drive being used: **D:\Agere\ET1310\Windows**

Verifying installation

Once the installation has completed, verify that the device is properly installed, by browsing to: **Control Panel -> System -> Hardware (tab) -> Device Manager**. The new card will be located under **Network Adapters**:



Similarly, a new connection will appear in **Network Connections**:



Using the PCI Express LAN card

Once the card has been physically installed in the computer, and the necessary drivers have been applied, the LAN card will be ready for use. Simply insert the RJ45 connector provided by the CAT5 cable, into the RJ45 port on the rear bracket of the LAN card.

For instructions on how to configure the LAN card for use with specialized applications, or for specific network functions, please consult any accompanying documentation for your network equipment (i.e. cable modem, router, etc.)

Specifications

Bus Type	PCI Express x1
Connectors	RJ45 Female
Maximum Data Transfer Rate	1000Mbps data rate
Chipset	AGERE ET1310
OS Support	Windows 2000,XP, XP 64-bit
Product Dimensions	94 x 120 x 20 mm (3.7" x 4.72" x 0.78")
Product Weight	55 g (1.94 oz.)

Accessory Products from StarTech.com

Contact your local StarTech.com dealer or visit www.startech.com for cables or other accessories that will help you get the best performance out of your new product.

M45PATCH10BL

10 ft Blue Molded Category 5e (350 MHz) UTP Patch Cable

M45PATCH15BL

15 ft Blue Molded Category 5e (350 MHz) UTP Patch Cable

M45CROSS10BL

10 ft Blue Molded Category 5e (350 MHz) Crossover UTP Patch Cable

M45CROSS15BL

15 ft Blue Molded Category 5e (350 MHz) Crossover UTP Patch Cable

C6PATCH10BL

10 ft Blue Molded Category 6 Patch Cable - ETL Tested & Certified

C6PATCH12BL

12 ft Blue Molded Category 6 Patch Cable - ETL Tested & Certified

Technical Support

StarTech.com's lifetime technical support is an integral part of our commitment to provide industry-leading solutions. If you ever need help with your product, visit www.startech.com/support and access our comprehensive selection of online tools, documentation, and downloads.

Warranty Information

This product is backed by a lifetime warranty. In addition, StarTech.com warrants its products against defects in materials and workmanship for the periods noted, following the initial date of purchase. During this period, the products may be returned for repair, or replacement with equivalent products at our discretion. The warranty covers parts and labor costs only. StarTech.com does not warrant its products from defects or damages arising from misuse, abuse, alteration, or normal wear and tear.

Limitation of Liability

In no event shall the liability of StarTech.com Ltd. and StarTech.com USA LLP (or their officers, directors, employees or agents) for any damages (whether direct or indirect, special, punitive, incidental, consequential, or otherwise), loss of profits, loss of business, or any pecuniary loss, arising out of or related to the use of the product exceed the actual price paid for the product.

Some states do not allow the exclusion or limitation of incidental or consequential damages. If such laws apply, the limitations or exclusions contained in this statement may not apply to you.

About StarTech.com

StarTech.com is "The Professionals' Source for Hard-to-Find Computer Parts". Since 1985, we have been providing IT professionals with the quality products they need to complete their solutions. We offer an unmatched selection of computer parts, cables, server management solutions and A/V products and serve a worldwide market through our locations in the United States, Canada, the United Kingdom and Taiwan.

Visit www.startech.com for complete information about all our products and to access exclusive interactive tools such as the Parts Finder and the KVM Reference Guide. StarTech.com makes it easy to complete almost any IT solution. Find out for yourself why our products lead the industry in performance, support, and value.