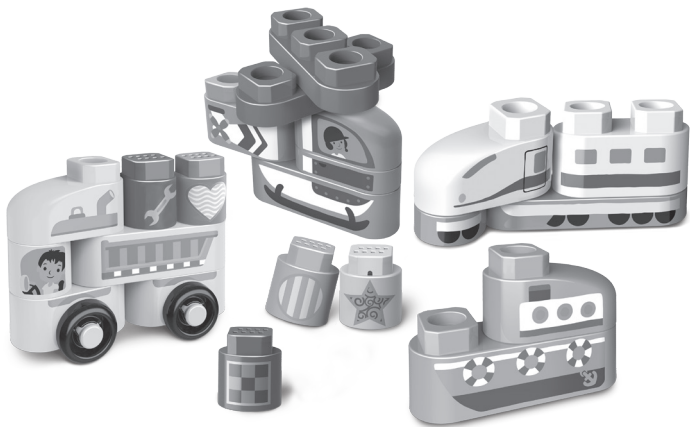




# Soar & Zoom Vehicles™



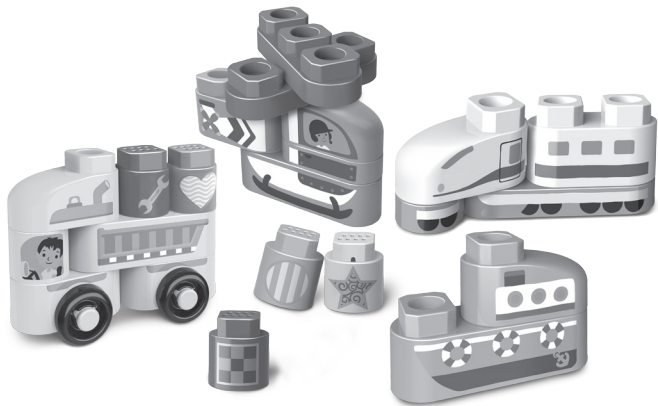
## Parent's Guide

This guide contains important information. Please keep it for future reference.

# INTRODUCTION

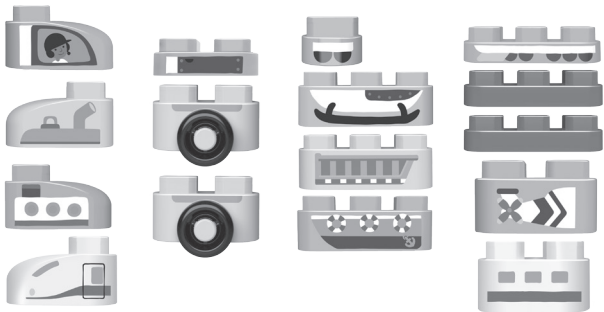
Thank you for purchasing the **LeapBuilders® Soar & Zoom Vehicles™** set.

This building set comes with six double-sided learning blocks and 16 non-electronic building pieces to create different vehicles. Combine with LeapBuilders® sets (sold separately) that include an electronic Smart Star™ cube to learn about shapes, tools and colors. Inspire open-ended creativity and stacking fun with all the pieces.

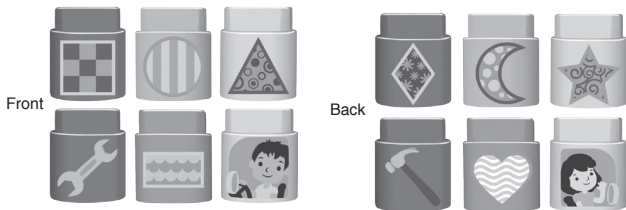


# INCLUDED IN THIS PACKAGE

- 16 Building Pieces



- Six Double-Sided Learning Blocks



- Three double-sided building cards
- One parent's guide

**WARNING:**

All packing materials, such as tape, plastic sheets, packaging locks, removable tags, cable ties, cord and packaging screws are not part of this toy, and should be discarded for your child's safety.

**NOTE:**

Please keep this parent's guide as it contains important information.

**ATTENTION :**

Pour la sécurité de votre enfant, débarrassez-vous de tous les produits d'emballage tels que rubans adhésifs, feuilles de plastique, attaches, étiquettes et vis d'emballage. Ils ne font pas partie du jouet.

**NOTE :**

Il est conseillé de conserver ce guide des parents car il comporte des informations importantes.

## CARE & MAINTENANCE

1. Keep the pieces clean by wiping them with a slightly damp cloth.
2. Keep the pieces out of direct sunlight, away from any direct heat source and do not expose them to moisture or water.

### **IMPORTANT NOTE:**

If a problem arises, please call our Consumer Services Department at **1-800-701-5327** in the U.S. or email [support@leapfrog.com](mailto:support@leapfrog.com). Creating and developing LeapFrog® products is accompanied by a responsibility that we take very seriously. We make every effort to ensure the accuracy of the information, which forms the value of our products. However, errors sometimes can occur. It is important for you to know that we stand behind our products and encourage you to contact us with any problems and/or suggestions you might have. A service representative will be happy to help you.

### **Supplier's Declaration of Conformity**

Trade Name:	LeapFrog®
Model:	6057
Product Name:	LeapBuilders® Soar & Zoom Vehicles™
Responsible Party:	LeapFrog Enterprises, Inc.
Address:	6401 Hollis Street, Suite 100, Emeryville, CA 94608
Website:	<a href="http://leapfrog.com">leapfrog.com</a>

***Read our complete warranty policy online at  
[leapfrog.com/warranty](http://leapfrog.com/warranty).***



***Visit our website for more  
information about our products,  
downloads, resources and more.***

***leapfrog.com***

LeapFrog Enterprises, Inc.  
A subsidiary of VTech Holdings Limited.  
TM & © 2019 LeapFrog Enterprises, Inc.

All rights reserved.  
91-003554-008 (US)