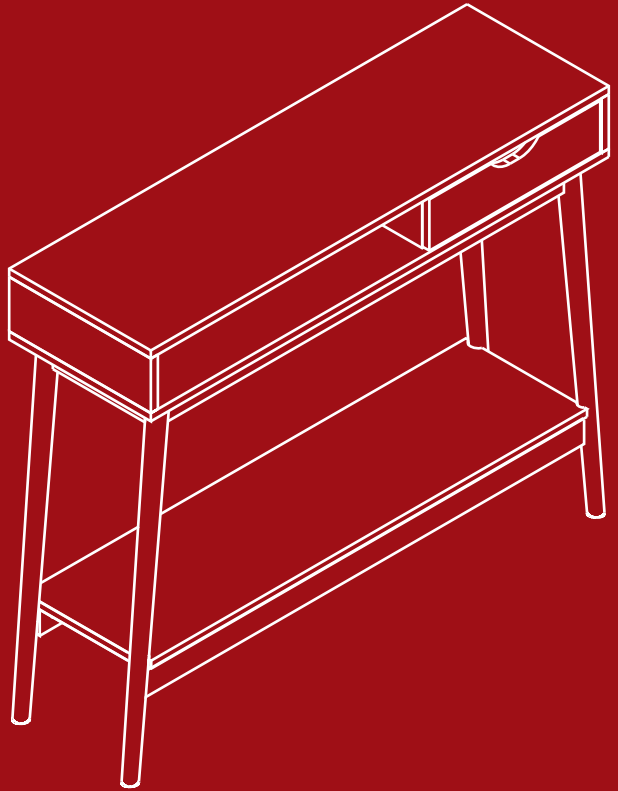




BEST CHOICE  
PRODUCTS



# INSTRUCTION MANUAL

---

Wooden Console Table with  
Storage Cubby & Shelf



**BEST CHOICE  
PRODUCTS**

---

As shoppers, we're always trying to find the perfect balance between quality & value. At BCP, we believe we've achieved that. Our diverse catalog of everyday essentials is tailored especially to our customers & guaranteed to hit that sweet spot of high quality & low price.

— Always. —



14 LBS  
TABLETOP  
CAPACITY



9 LBS  
CUBBY  
CAPACITY



7 LBS  
DRAWER  
CAPACITY



18 LBS  
LOWER SHELF  
CAPACITY



2 PERSON  
ASSEMBLY



UP TO 45 MIN.  
ASSEMBLY

## ! NOTICE

Please retain these instructions for future reference.

- Firmly secure all bolts, screws and knobs before use.
- Reconfirm that all bolts, screws, and knobs are secure every 90 days.
- Do not use or store this item in the proximity of open flame or flammable/combustible chemicals.
- Always lay components on a clean, soft-cushioned surface during assembly.
- Improper installation may cause damage to the product.
- Product is intended for indoor use only.
- If any parts are missing, broken, damaged, or worn, stop using this item until repairs are made and/or factory replacement parts are installed.
- Do not use this item in a way inconsistent with the manufacturer's instructions as this could void the product warranty.
- To wipe down the furniture, use a damp cloth. Then, wipe it down once more with a dry cloth.
- Reconfirm that all bolts, screws, and knobs are secure every 90 days.
- Be aware that extra hardware may be included.
- This product is intended for residential use only.

## TOOLS REQUIRED



PHILLIPS  
SCREWDRIVER  
(NOT PROVIDED)



ALLEN WRENCH  
(PROVIDED)



POWER DRILL  
(RECOMMENDED)

## HARDWARE

1

M6 x 35mm  
CAM BOLT



8 PCS

2

M15 x 10mm  
CAM LOCK



8 PCS

3

M6 x 30mm  
DOWEL



26 PCS

4

M4 x 35mm  
SCREW



12 PCS

5

ANCHOR BOLT



8 PCS

6

RUNNER  
SCREW



8 PCS

7

SUPPORT  
SCREWS



16 PCS

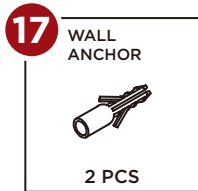
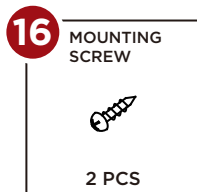
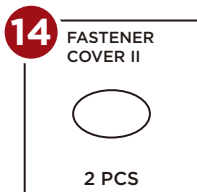
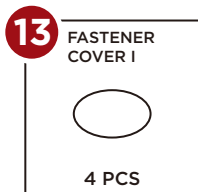
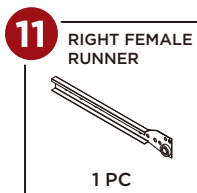
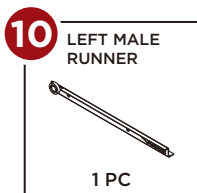
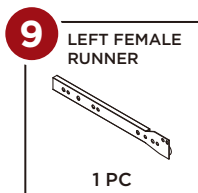
8

BARREL NUT &  
BOLT SET

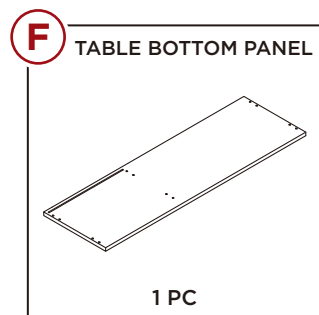
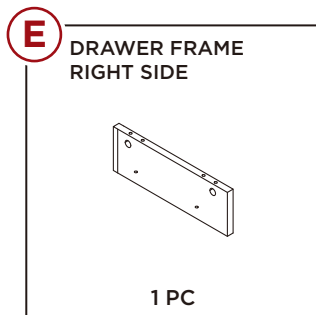
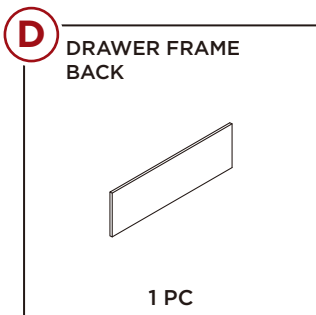
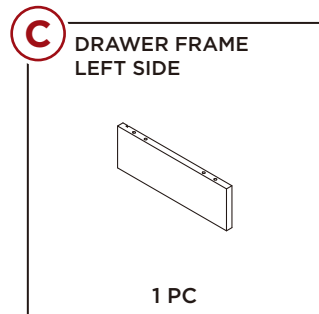
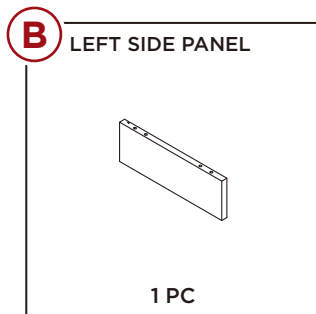
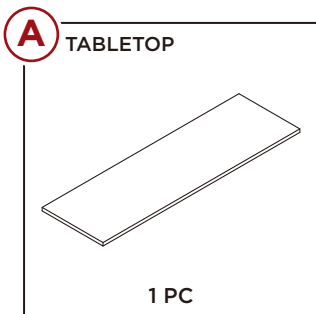


4 PCS

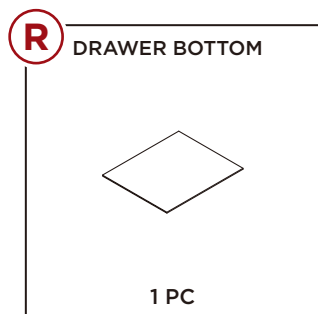
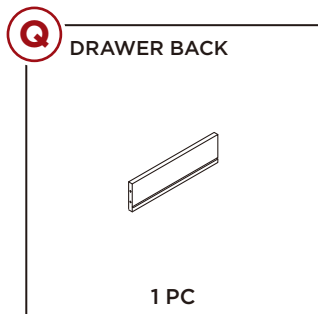
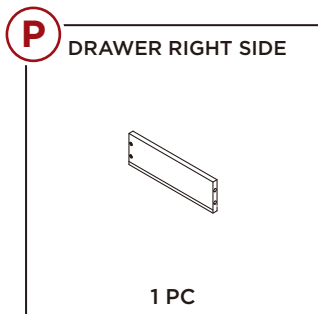
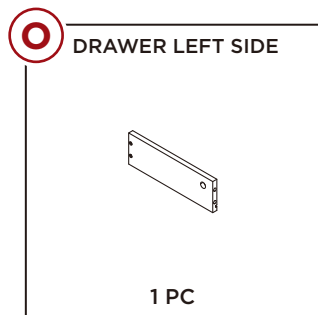
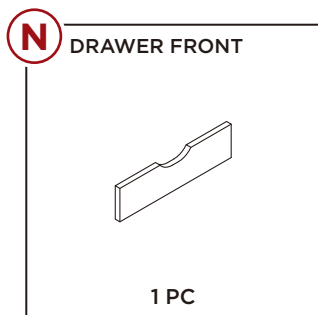
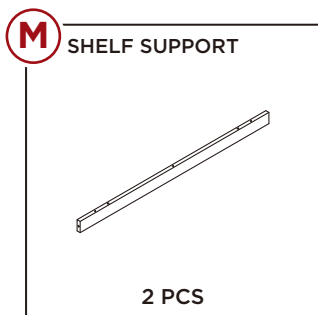
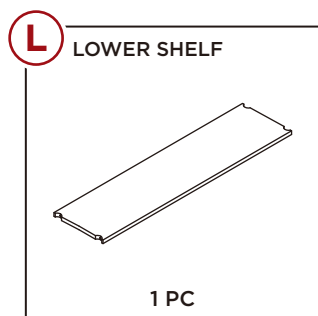
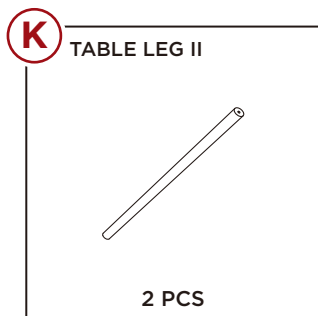
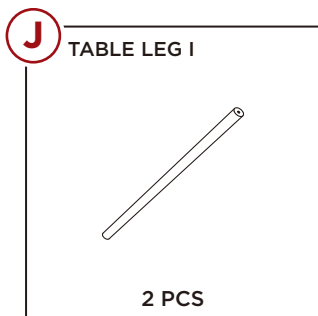
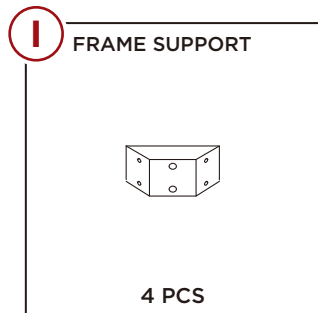
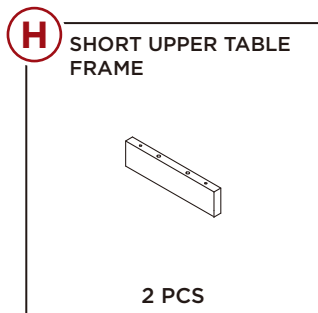
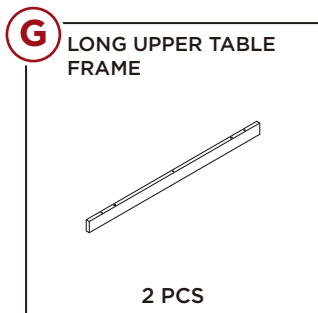
## HARDWARE



## PARTS



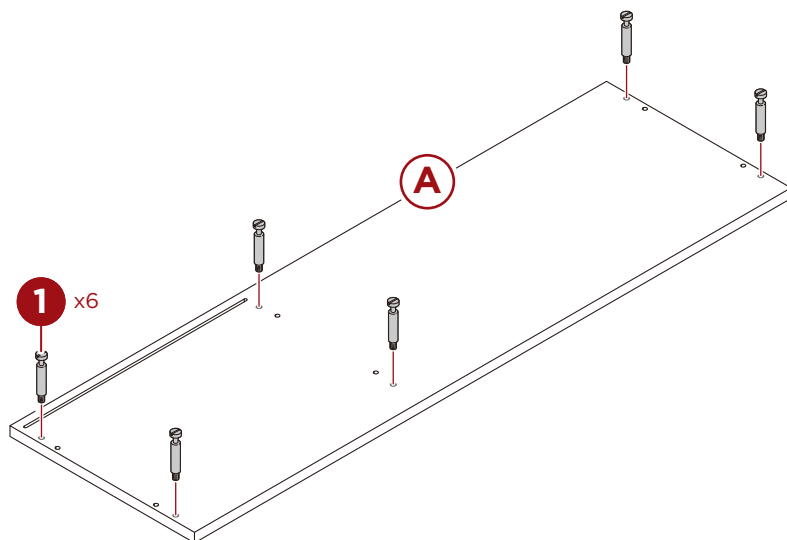
## PARTS



## PRODUCT ASSEMBLY

1

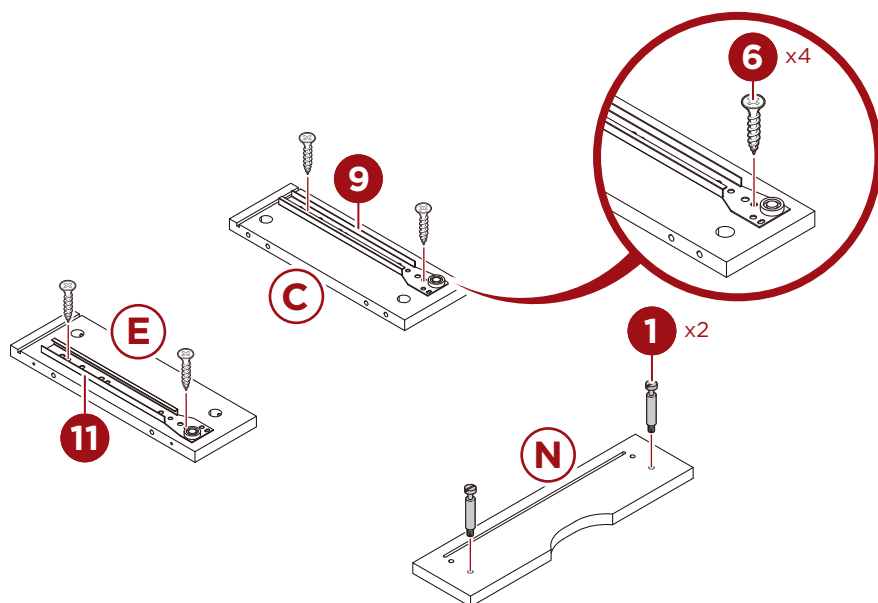
Insert six **part 1 cam bolts** into the **part A tabletop**.



2

Attach the **part 9** and **part 11 female runners** to the **part C** and **E drawer sides** with four **part 6 screws**, two screws per runner.

Insert two **part 1 cam bolts** into the back of the **part N drawer front**.

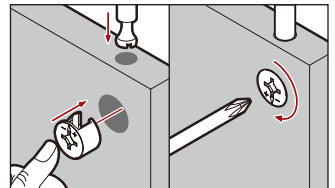
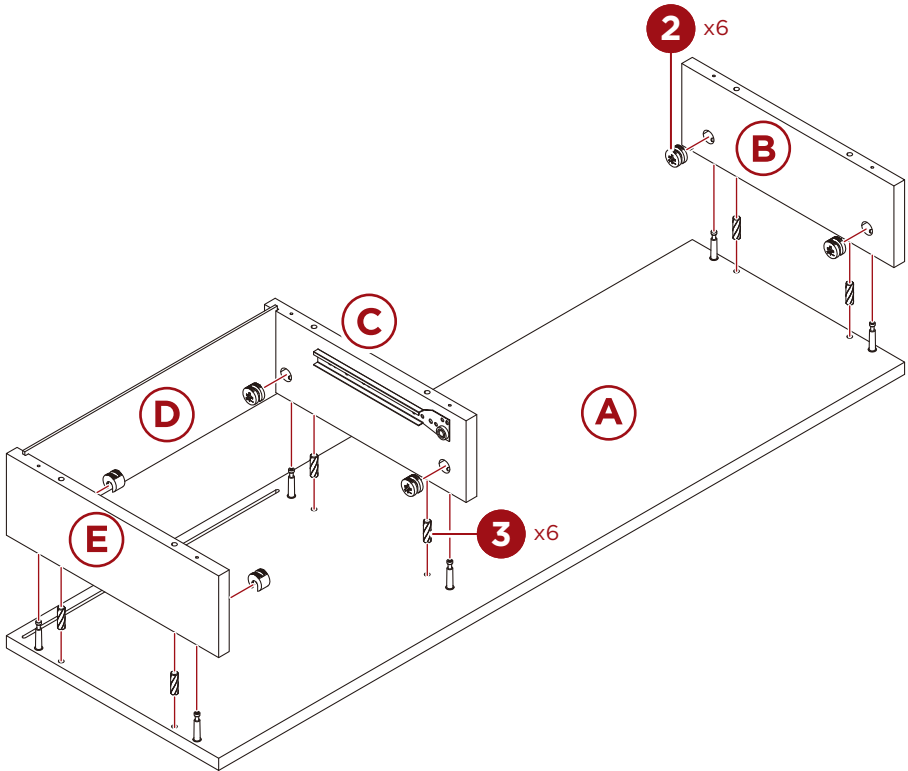


## PRODUCT ASSEMBLY

3

Insert two **part 3** dowels and two **part 2** cam locks each into the **part B** left side panel, **part C** drawer left side, and **part E** drawer right side, six dowels and six locks total.

Attach the **part B**, **C**, and **E** panels to the bottom of the **part A** tabletop, turn the cam locks to secure. Insert the **part D** drawer frame back.

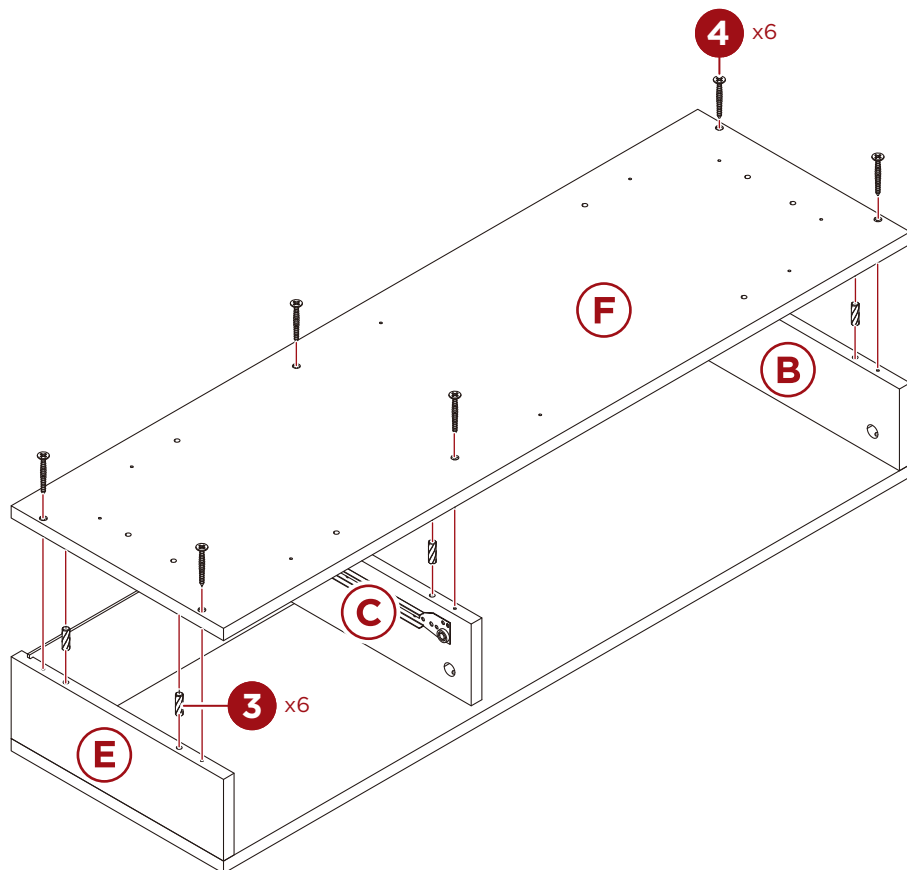


Use a screwdriver to turn the cam lock to secure the cam bolt.

## PRODUCT ASSEMBLY

4

Attach the **part F table bottom** to the **part B, C, and E panels** with six **part 3 dowels** and six **part 4 screws**.



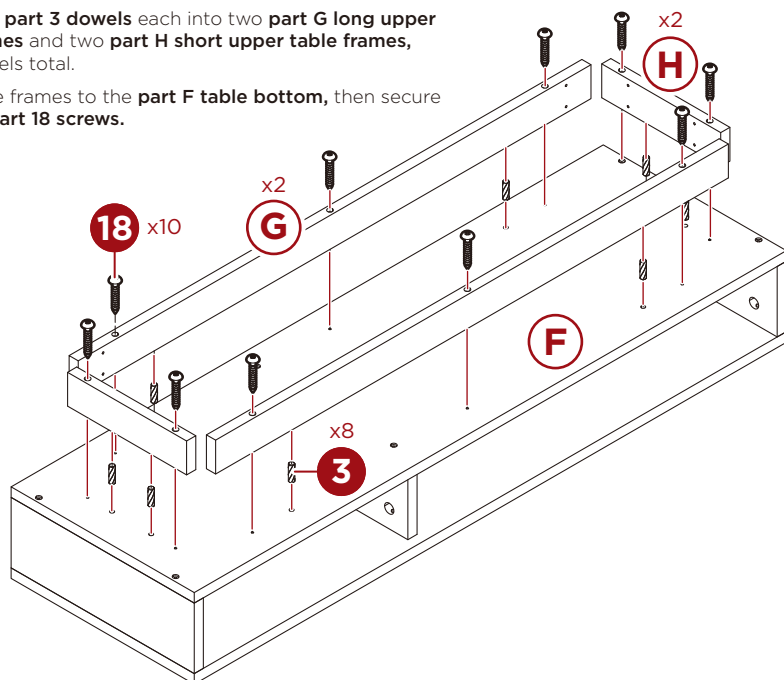


## PRODUCT ASSEMBLY

5

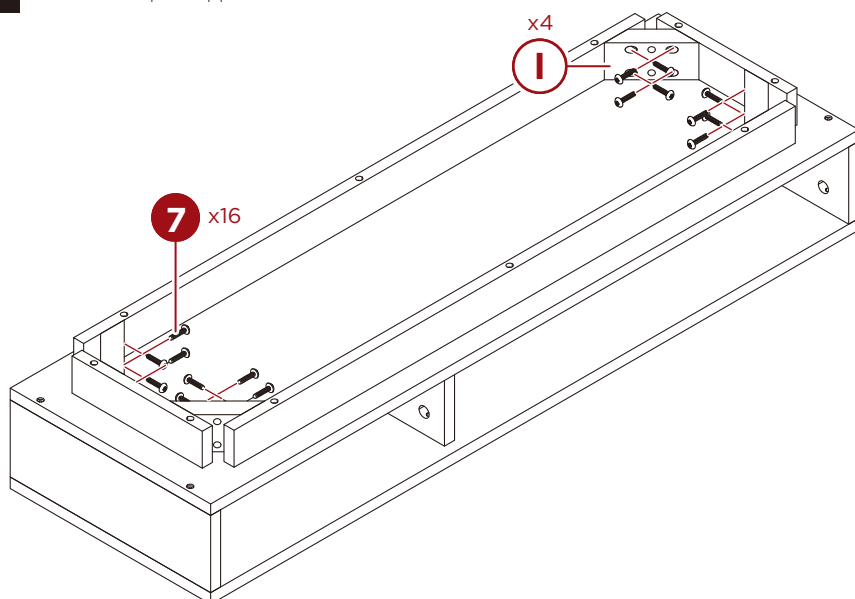
Insert two **part 3** dowels each into two **part G** long upper table frames and two **part H** short upper table frames, eight dowels total.

Attach the frames to the **part F** table bottom, then secure with ten **part 18** screws.



6

Secure the frame assembly by attaching four **part I** frame supports with sixteen **part 7** screws, four screws per support.



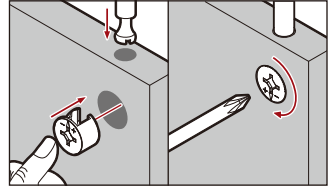
## PRODUCT ASSEMBLY

7

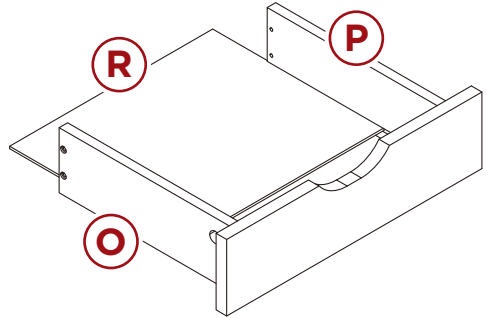
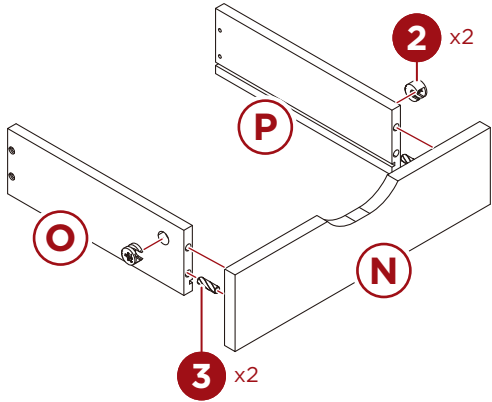
Locate the **part N drawer front** and insert two **part 3 dowels**.

Insert two **part 2 cam locks** into the **part O and P drawer sides**, then attach them to the **part N drawer front**. Turn the cam locks to secure.

Slide the **part R drawer bottom** between the left and right sides.



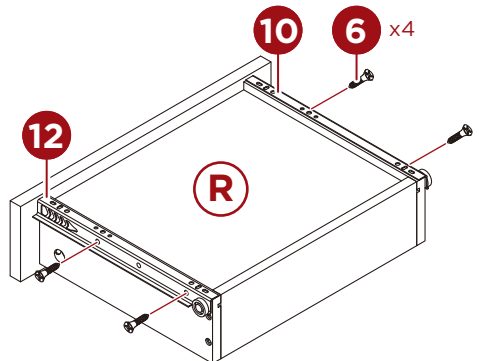
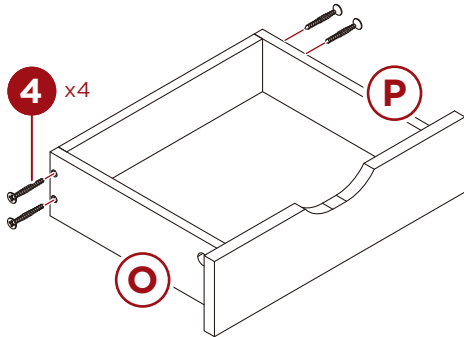
Use a screwdriver to turn the cam lock to secure the cam bolt.



8

Attach the **part Q drawer back** to the **part O and P drawer sides** with four **part 4 screws**.

Flip the drawer assembly, then attach the **part 10 and 12 male runners** with four **part 6 screws**, two screws per runner.

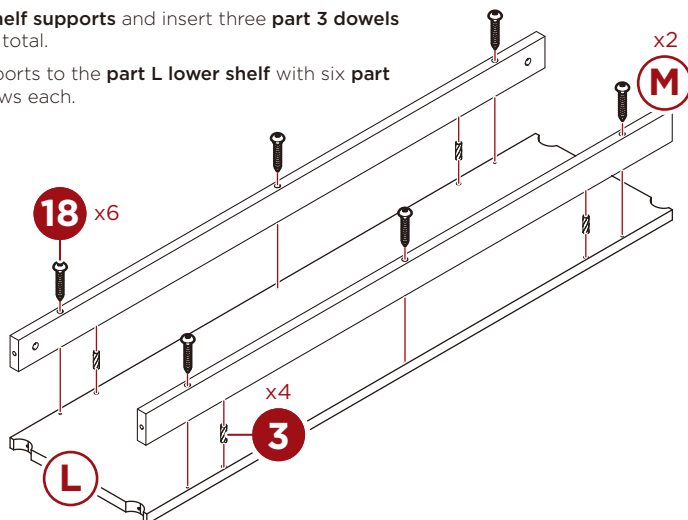


## PRODUCT ASSEMBLY

9

Locate two **part M shelf supports** and insert three **part 3 dowels** into each, six dowels total.

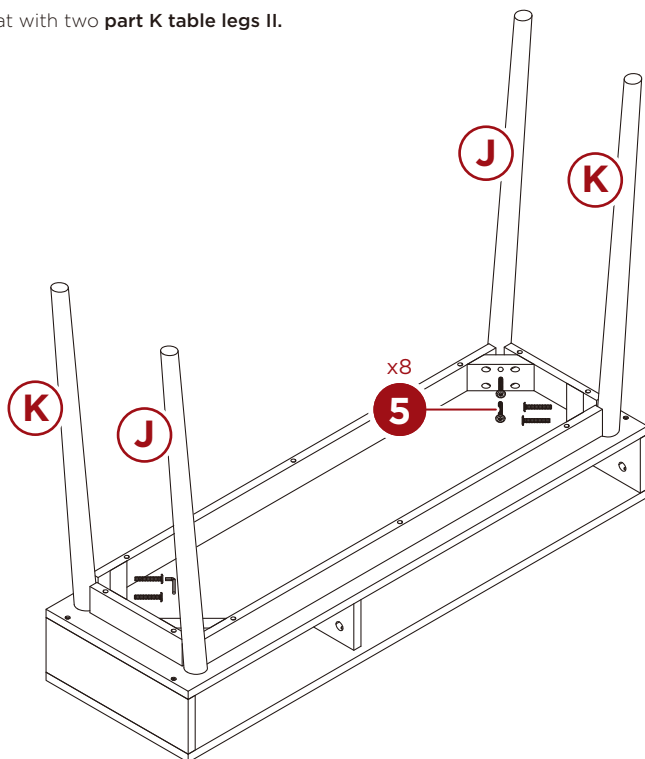
Attach the shelf supports to the **part L lower shelf** with six **part 18 screws**, three screws each.



10

Attach two **part J table legs I** to the **part I frame support** with four **part 5 anchor bolts**; attach the legs in opposite corners of the frame assembly.

Repeat with two **part K table legs II**.

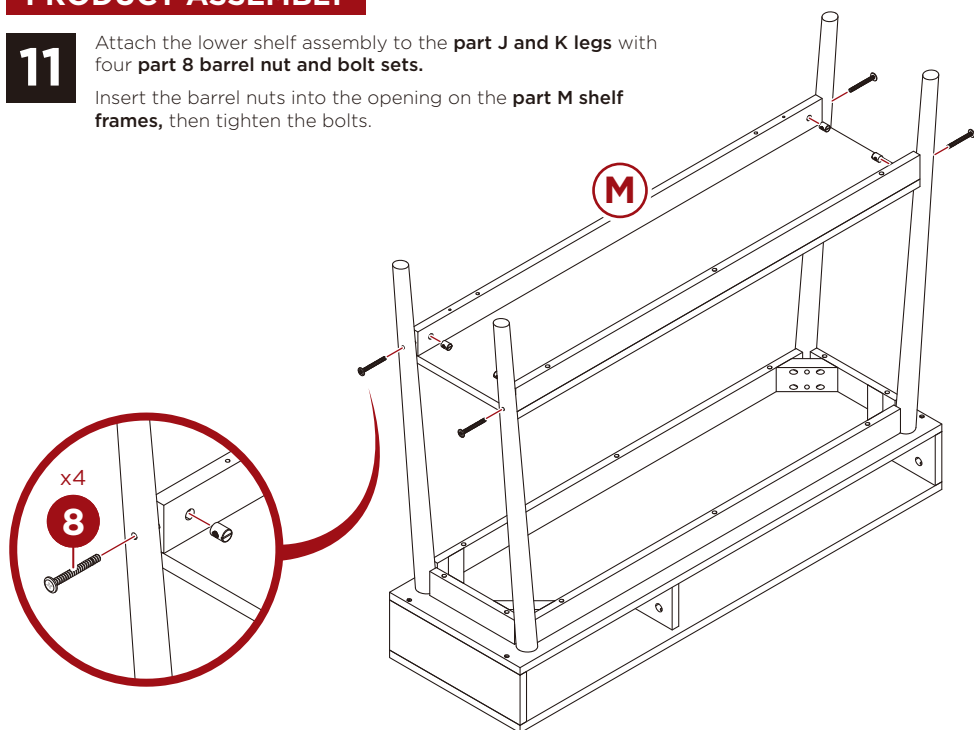


## PRODUCT ASSEMBLY

11

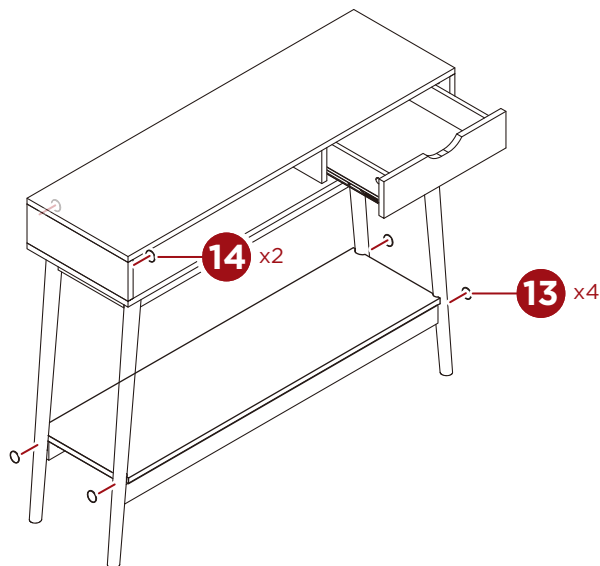
Attach the lower shelf assembly to the **part J and K legs** with four **part 8 barrel nut and bolt sets**.

Insert the barrel nuts into the opening on the **part M shelf frames**, then tighten the bolts.



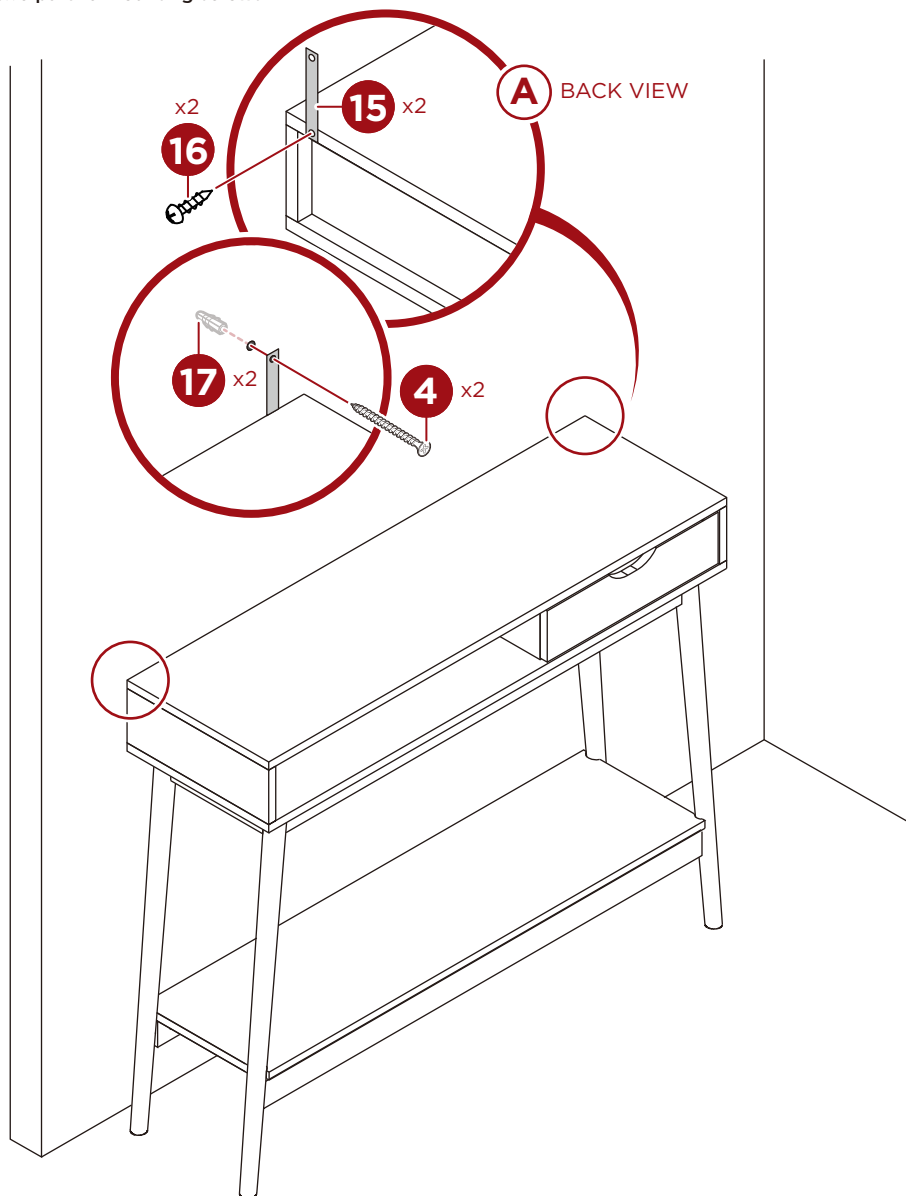
12

Apply the **part 13 and 14 fastener covers** as shown.



## WALL MOUNTING (OPTIONAL)

1. Place the assembled product in its intended space, abutting a wall. Stretch the **part 15 mounting straps** to sit flat against the wall, then use a pencil to mark the wall, use the strap's pilot hole as a guide.
  2. Use a power drill to make two pilot holes in the wall then insert two **part 17 wall anchors**.
  3. Align the mounting straps with the wall anchors, then secure the strap with two **part 4 screws**.
- NOTE:** You may need to use different wall anchors/screws depending on your wall material.
4. On the back of the assembled product, attach the **part 15 mounting straps** to the **part A tabletop** with two **part 16 mounting screws**.





**BEST CHOICE  
PRODUCTS**

---

Check out more great products:  
**[bestchoiceproducts.com](http://bestchoiceproducts.com)**

---

Earn points while you shop. Join today!

bestchoiceproducts  
**rewards**

Join | Earn | Redeem

Give your friends 15% off their first order! For each successful referral you'll receive 100 points.

[bestchoiceproducts.com](https://bestchoiceproducts.com)



# HELP CENTER



Question about your product? We're here to help. Visit us at:

[help.bestchoiceproducts.com](https://help.bestchoiceproducts.com)



Chat Support



Product Inquiry



Orders FAQ



Product Assembly



Returns & Refunds

## PRODUCT WARRANTY INFORMATION

All items can be returned for any reason within 60 days of the receipt and will receive a full refund as long as the item is returned in its original product packaging and all accessories from its original shipment are included. All returned items will receive a full refund back to the original payment method. All returned items will not be charged a re-stocking fee.

All returned items require an RA (Return Authorization) number, which can only be provided by a Best Choice Products Customer Service Representative when the return request is submitted. Items received without an RA may not be accepted or may increase your return processing time. Once an item has been received by Best Choice Products, refunds or replacements will be processed within 5 business days.

All returns must be shipped back to the Best Choice Products Return Center at the customer's expense. If the reason for return is a result of an error by Best Choice Products then Best Choice Products will provide a pre-paid shipping label via email. Boxes for return shipping will not be provided by Best Choice Products, and is the customer's responsibility to either use the original shipping boxes or purchase new boxes.

Pictures may be required for some returns to ensure an item is not damaged prior to its return. Items returned are not considered undamaged until they are received by Best Choice Products and verified as such. All damages to items are the customer's responsibility until the item has been received by and acknowledged by Best Choice Products as undamaged.

© 2023 Best Choice Products, Inc. All rights reserved. Distributed by Best Choice Products, Inc. Tustin, CA 92780

## WARNING

Manufacturer and seller expressly disclaim any and all liability for personal injury, property damage or loss, whether direct, indirect, or incidental, resulting from the incorrect attachment, improper use, inadequate maintenance, unapproved modification, or neglect of this product.