

Product data sheet

Specifications



APC Back-UPS 425VA, 120V, 6 NEMA outlets (2 surge), Battery not user replaceable

BE425M

Product availability: Stock - Normally stocked in distribution facility

Overview

Lead time Usually in Stock

Main

Main Input Voltage	120 V
Main Output Voltage	120 V
Kw Rating	255 W
Rated power in VA	425 VA
Product or Component Type	Uninterruptible power supply (UPS)
Input Connection Type	NEMA 5-15P
output connection type	4 NEMA 5-15R 2 NEMA 5-15R surge
Cable length	5 ft (1.5 m)
Number of cables	1
Battery Type	Lead-Acid battery
Provided equipment	User Manual

Batteries & Runtime

Run Time	View Runtime Graph
Efficiency	View Efficiency Graph
Included Battery Modules	0
Battery Slots Empty	0
Typical recharge time	8 h
Battery Charge Power (Watts)	6 W rated
Battery power in VAh	47 VAh runtime
Battery Life	3...5 year(s)
Battery graph comments	This graph is based on actual measured runtime data. All measurements were taken with new, fully charged batteries and a balanced resistive load (PF = 1.0). Actual runtimes may vary from the values of this graph. Actual runtimes are dependent on several variables including battery age, battery charge level, environmental conditions and characteristics of the connected load.
Extendable Run Time	0

General

Number of power module free slots 0

Price is "List Price" and may be subject to a trade discount – check with your local distributor or retailer for actual price.

Number of power module filled slots	0
Redundant	No

Physical

color	Black
Height	5.52 in (14.02 cm)
Width	9.98 in (25.35 cm)
Depth	4.1 in (10.5 cm)
Net Weight	5.7 lb(US) (2.6 kg)
Mounting preference	No preference
Mounting Mode	Not rack-mountable
Two post mountable	0
USB compatible	No

Input

Input Frequency	50/60 Hz +/- 3 Hz auto-sensing
Efficiency at full load	88...139 V
Maximum Input Current per Phase	5 A
Switching current capacity	7 A

Output

Max Configurable Power (Watts)	255 W
Output Frequency (sync to mains)	50/60 Hz +/- 3 Hz sync to mains
Topology	Standby
Waveform Type	Square wave
Graph start point	10
Maximum configurable power in VA	425 VA
Transfer Time	6ms typical : 10ms maximum

Conformance

Product Certifications	California (CEC) Battery Charger cTUVus
Equipment protection policy	Lifetime : \$75000

Environmental

Ambient Air Temperature for Operation	32...104 °F (0...40 °C)
Relative Humidity	0...95 %
Operating altitude	0...3000 ft
Ambient Air Temperature for Storage	-4...122 °F (-20...50 °C)
Storage Relative Humidity	0...95 %
Storage altitude	0...5000 ft (0.0000000000...1524.0000000000 m)
acoustic level	40 dBA

Communications & Management

Control panel LED Status display with On Line : On Battery

Surge Protection and Filtering

Surge energy rating 180 J

Ordering and shipping details

Category 80230-IG SEBA TO SEUSA

Discount Schedule BMS1

GTIN 731304329343

Returnability No

Country of origin CN

Packing Units

Unit Type of Package 1 PCE

Number of Units in Package 1 1

Package 1 Height 8.7 in (22 cm)

Package 1 Width 5.5 in (14 cm)

Package 1 Length 12.4 in (31.5 cm)

Package 1 Weight 6.6 lb(US) (3 kg)

SCC14 10731304329340

Contractual warranty

Warranty 3 years repair or replace

Sustainability

Green Premium™ label is Schneider Electric's commitment to delivering products with best-in-class environmental performance. Green Premium promises compliance with the latest regulations, transparency on environmental impacts, as well as circular and low-CO₂ products.

Guide to assessing product sustainability is a white paper that clarifies global eco-label standards and how to interpret environmental declarations.

[Learn more about Green Premium >](#)

[Guide to assess a product's sustainability >](#)



Energy Efficient Take-back Transparency RoHS/REACH

Resource performance

Energy Efficient Product

Take-Back Program Available

Well-being performance

Mercury Free

Rohs Exemption Information Yes

Certifications & Standards

Reach Regulation [REACH Declaration](#)

Eu Rohs Directive Compliant with Exemptions

Environmental Disclosure [Product Environmental Profile](#)

Circularity Profile [End of Life Information](#)

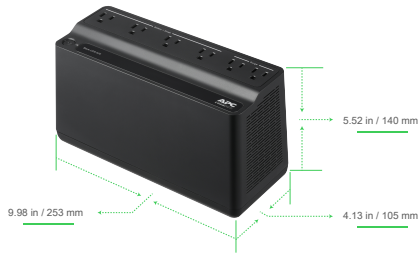
California Proposition 65 WARNING: This product can expose you to chemicals including: Lead and lead compounds, which is known to the State of California to cause cancer and birth defects or other reproductive harm. For more information go to www.P65Warnings.ca.gov

Optimized Energy Efficiency Energy efficient product

Take-Back Take-back program available

Technical Illustration

Dimensions



Offer Marketing Illustration

Product benefits / Features



Image of product / Alternate images

Alternative

