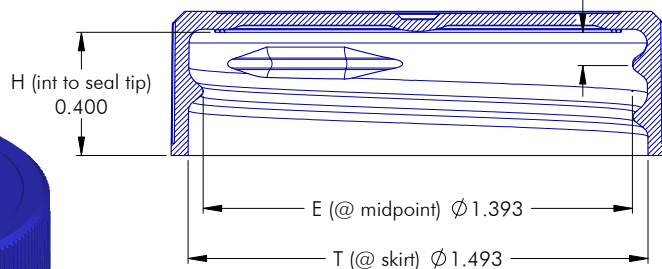
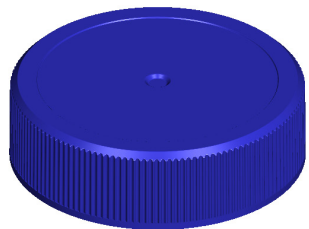
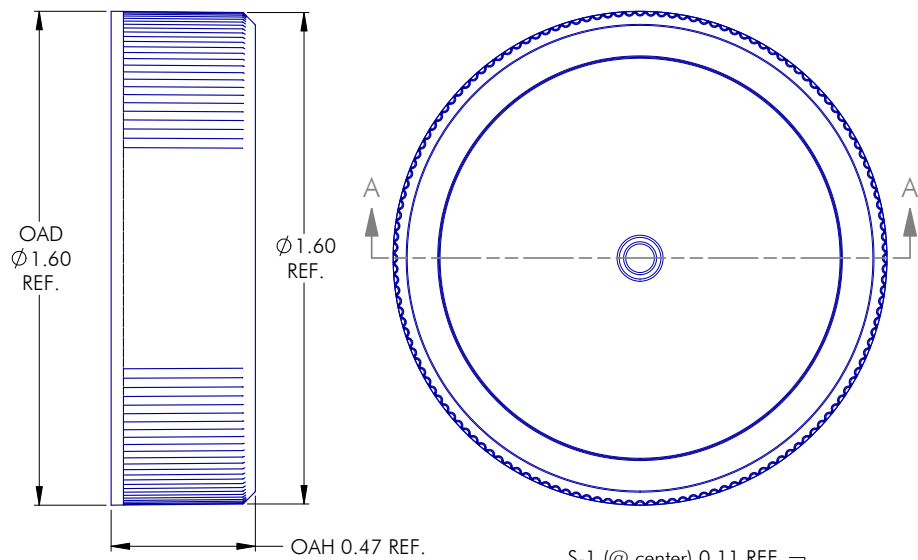


- Notes:
- 1) Container Weight --100-130 grams
 - 2) Material -- HDPE
 - 3) Overflow Capacity -- 137.3 fl. oz. (@115 Grams)
 - 4) Fill Capacity -- 128 fl.oz.
 - 5) Tolerances Unless Specified:
 Vertical -- ±.080
 Horizontal -- ±.090
 Volumetric -- ±1.5 fl. oz.
 - 6) Samples to be checked Aged w/ 20 ° C water

DISCLAIMER

THIS INFORMATION IS PROVIDED AS A GENERAL GUIDE, INCLUDING DIMENSIONS. IT IS THE CUSTOMER'S RESPONSIBILITIES TO SELECT THE PROPER CONTAINER FOR PRODUCT AND APPLICATION COMPATIBILITY.

DISTRIBUTED BY: Pipeline Packaging	REF NO.: DWG31944
DESCRIPTION: Kit, 128 oz HDPE Industrial Round, 38-400, With Matte Top Ribbed Sides Cap with SureSeal Liner	



Specifications:

DIAMETER 38 mm
THREAD PROFILE 400
NECK FINISH 38-400
CLOSURE TOP Stipple
CLOSURE SIDEWALL Fine Ribbed
MATERIAL PP

PACKAGING & FREIGHT INFORMATION

PACK TYPE	PCS/CTN	CTNS/PALT	PCS/PALT	CTN WT*	PALT WT*	FRT CLASS
Bulk	3,750	15	56,250	29 ⁽¹⁾	440 ⁽¹⁾	100 ⁽¹⁾
Bulk	3,750	15	56,250	32 ⁽²⁾	485 ⁽²⁾	100 ⁽²⁾
CARTON DIMENSIONS: 24 x 16 x 15			PALLET DIMENSIONS: 48 x 40 x 50			

(1) Unlined Closures (2) Lined Closures *Approximate

MARKETS

Agricultural, Automotive, Industrial, and Medical Products, Dressings & Sauces, Food, Food Oil & Service, Personal Care & Cosmetics, Pharmaceuticals, Beverages, Household Chemicals, Nutraceuticals, and Dairy Products.

OPTIONS

Available in white, standard, and custom colors. Liners can be cut with tri-tab easy-open feature. Can be embossed or debossed with custom message.

CLOSURE BENEFITS

- A great general-purpose closure
- A proven closure for the Food Oil and Agricultural Chemical markets
- Fine-ribbed sides are easier to grip
- Our most popular closure style
- Popular for cosmetics

DISCLAIMER

THIS INFORMATION IS PROVIDED AS A GENERAL GUIDE, INCLUDING DIMENSIONS. IT IS THE CUSTOMER'S RESPONSIBILITIES TO SELECT THE PROPER CONTAINER FOR PRODUCT AND APPLICATION COMPATIBILITY.

DISTRIBUTED BY:




REF NO.:

DWG31944

DESCRIPTION:

Kit, 128 oz HDPE Industrial Round, 38-400, With Matte Top Ribbed Sides Cap with SureSeal Liner

Product Name:	SureSeal® 200 Series
Product Type:	One piece, three-ply coextruded liner.
Material:	Low density polyethylene skin top and bottom with foamed polyolefin core.
Composition:	Core and outer skin fusion. Closed cell foam core of LDPE is sandwiched between polyethylene skin. This results in a chemically fused, single polymeric product.
Composition Benefits:	Symmetrical construction - either side serves as the liner face. Single polymeric product - no ply-separation.
Application:	Applications have provided positive sealing for foods, beverages, pharmaceuticals, cosmetics, industrial and household chemicals.
Compatibility:	SureSeal® 200 Series is chemically inert, odorless, tasteless and dust-free. Good resistance to acids, alkalis, slow solvents, alcohols, oils and aqueous products. Poor resistance to active hydrocarbon solvents.
Performance Values:	Excellent sealability, resiliency and compression recovery. Excellent torque retention.
Thickness/Width:	Available in thicknesses of .020" to .060" (+/- .005") Widths from 1" to 36" (+/- .031")
Density:	SureSeal® 222 = 24 < 28 lbs/ft ³ SureSeal® 226 = 26 < 30 lbs/ft ³
Color:	FDA approved white. Custom colors available upon request.
FDA Status:	Drug Master File #12831. This material complies with FDA regulation 177.1520(c)3.1 for food contact application.

DISCLAIMER	DISTRIBUTED BY:  Pipeline Packaging	REF NO.: DWG31944
	DESCRIPTION: Kit, 128 oz HDPE Industrial Round, 38-400, With Matte Top Ribbed Sides Cap with SureSeal Liner	

THIS INFORMATION IS PROVIDED AS A GENERAL GUIDE, INCLUDING DIMENSIONS. IT IS THE CUSTOMER'S RESPONSIBILITIES TO SELECT THE PROPER CONTAINER FOR PRODUCT AND APPLICATION COMPATIBILITY.