

Coconut rice

Ingredients

1 cup water
¾ cup jasmine rice
½ cup coconut cream
¼ tsp coconut oil
¼ tsp sea salt

Method

Coat the inside of the rice cooker with coconut oil and add the rice, water and coconut milk.

Cover and turn the rice cooker on.

Cook for 15–20 minutes.

Harissa rice

Ingredients

1 cup water
¾ cup long grain rice
½ onion, diced
1 clove garlic, finely chopped
1 tsp olive oil
1 tsp harissa paste
¼ tsp sea salt

Method

Add the olive oil and onion to the rice cooker and switch it on.

Cook for approx. 3–5 minutes until the onion has softened, then add the garlic, rice, water, harissa paste and salt.

Cook until all the water has been absorbed, then fluff the rice with a fork.

Rice pudding

Ingredients

2 cups of skimmed milk
1 tsp cinnamon
1 tsp sugar
½ cup white rice
½ tsp pure vanilla extract

Method

Add the rice, 1.5 cups of milk, sugar and vanilla extract to the rice cooker.

Cook for one cycle (approx. 30 minutes or until the rice is fully cooked), stirring occasionally.

When the rice cooker finishes cooking, stir in the cinnamon and the remaining ½ cup of milk.

Cover with the lid and leave to cool before serving.



NOTE: Milk may bubble up around the lid. Exercising caution, remove the lid with heat-resistant oven gloves and stir until the milk settles. Cover the rice cooker to continue cooking.

User manual

Rice cooker



To register for your extended guarantee, scan the QR code or visit guarantee.uspic.com/progress and register your product within 30 days of purchase. For any further queries, visit www.progresscookshop.com.

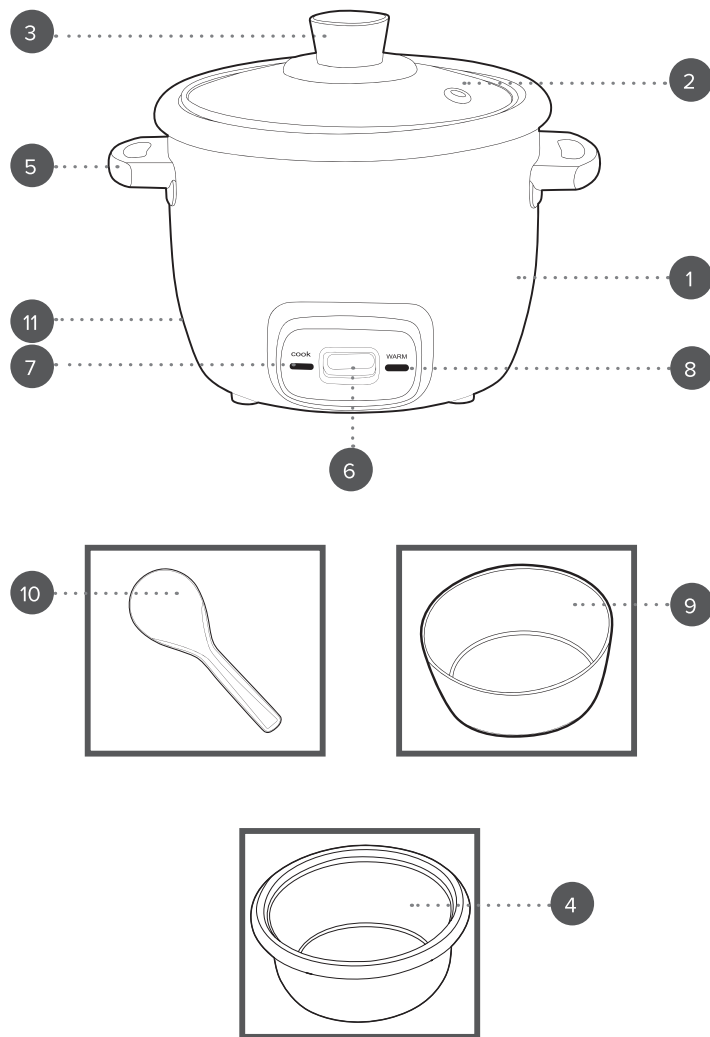
Manufactured by:
Ultimate Products UK Ltd.,
Victoria Street, Manchester OL9 0DD. UK.
Ultimate Products Europe Ltd.,
19 Baggot Street Lower, Dublin D02 X658. ROI.

MADE IN CHINA.

©Progress trademark. All rights reserved.
CD170925/MD000000/V1

progress
since 1931

Description of parts



- | | |
|------------------------------|-------------------------|
| 1. Rice cooker main unit | 7. Cook indicator light |
| 2. Glass lid with steam vent | 8. Warm indicator light |
| 3. Lid handle | 9. Measuring cup |
| 4. Removable cooking pot | 10. Rice spoon |
| 5. Cool-touch handles | 11. Power switch |
| 6. Function switch | |

Please retain instructions for future reference.

Dos and don'ts



Handle the removable cooking pot and glass lid with care.
Use heat-resistant oven gloves when removing the cooking pot from the rice cooker.
Check that the rice is cooked through before serving.
Take care when removing the lid, as steam may be emitted.
Wipe the outer edge of the removable cooking pot with a dry cloth before placing it into the rice cooker main unit to reduce the possibility of liquid coming into contact with the heating element
Only operate the rice cooker with the removable cooking pot and glass lid in place.



Do not use the removable cooking pot if it is chipped or cracked.
Do not subject the removable cooking pot to sudden changes in temperature; adding cold water to the cooking pot when it is very hot could cause it to crack.
Do not put any part of the rice cooker into an oven, freezer, microwave or on a gas/electrical hob.
Do not operate the rice cooker without rice and water.
Do not place food, water or other liquid directly into the base of the rice cooker.
Never place anything on top of the rice cooker.
Never cover or restrict the airflow from the steam vent during use.
Never exceed the relevant fill line for the amount of rice being cooked.
Never place the removable cooking pot onto any surfaces that may be affected by heat.
Do not use the warm function to cook rice; it should only be used to keep cooked rice warm.
Never leave rice in the cooking pot whilst the warm function is selected for longer than 3 hours; this is for food hygiene reasons.

Care and maintenance

Before attempting any cleaning or maintenance, unplug the rice cooker from the mains power supply and allow to cool fully.

STEP 1: Wipe the rice cooker main unit with a soft, damp cloth and dry thoroughly.
STEP 2: Clean all other components in warm, soapy water, then rinse and dry thoroughly.

Never use harsh or abrasive cleaning detergents or scourers to clean the rice cooker or its accessories, as this could cause damage.
The rice cooker is not suitable for use in a dishwasher.



NOTE: The rice cooker should be cleaned after each use.

Instructions for use

Before first use

STEP 1: Before connecting to the mains power supply, clean the rice cooker following the instructions in the section entitled 'Care and maintenance'.

STEP 2: Place the rice cooker onto a stable, flat surface, at a height that is comfortable for the user.



NOTE: When using the rice cooker for the first time, a slight smoke or odour may be emitted. This is normal and will soon subside. Allow for sufficient ventilation around the rice cooker.

Using the rice cooker

STEP 1: Measure out the required amount of rice using the measuring cup provided, then wash the rice under clean, cold, running tap water using a sieve. Wash thoroughly to remove the surface layer of starch; this will help to avoid rice clumping during cooking.

STEP 2: Place the removable cooking pot into the rice cooker main unit.

STEP 3: Add the washed rice to the removable cooking pot, then add the required amount of water. The markings on the cooking pot show how much water needs to be added. For example, if two cups of uncooked white rice have been added to the cooking pot, fill with water to the 'White Rice - 2' mark; if one cup of uncooked brown rice has been added to the cooking pot, fill with water to the 'Brown Rice - 1' mark.

STEP 4: Add approx. 1 tsp of salt for each cup of uncooked rice.

STEP 5: Using the lid handle, gently place the glass lid on top of the removable cooking pot.

STEP 6: Plug in and switch on the rice cooker at the mains power supply and ensure the power switch is in the on position. The warm indicator light will illuminate orange.

STEP 7: Push the function switch downwards to begin cooking. The cook light will illuminate red.

STEP 8: Once the rice is cooked and all the water has been absorbed, the function switch will pop up automatically and the warm light will illuminate orange.

STEP 9: Wait for approx. 10 minutes then remove the glass lid. Fluffing the rice before waiting can result in inconsistently cooked rice.

Storage

Check that the rice cooker is cool, clean and dry before storing in a cool, dry place. Never wrap the cord tightly around the rice cooker; wrap it loosely to avoid causing damage.

Specifications

Product code: EK6748

Input: 220–240 V ~ 50/60 Hz

Power: 250 W

Power consumption (off mode): 0 W

Recipes



NOTE: Use the included measuring cup when cup is referenced in the ingredients list.

Lime and coriander rice

Ingredients

1¼ cup water

¾ cup long grain jasmine rice

½ onion, diced

1 clove garlic, finely chopped

1 tbsp freshly squeezed lime juice

1 tsp olive oil

Handful of chopped coriander

Pinch of salt

Method

Add the olive oil and chopped onion to the rice cooker and switch it on.

Cook for approx. 3–5 minutes until the onion has softened, then add the garlic, rice, water and salt.

Cook for approx. 10 minutes until all the water has been absorbed, then fluff the rice with a fork.

Stir in the lime juice and garnish with the coriander.

Important safety

Please read carefully

Please retain instructions for future reference.

SAFETY INSTRUCTIONS

- When using electrical appliances, basic safety precautions should always be followed.
- Check that the voltage indicated on the rating plate corresponds with that of the local network before connecting the appliance to the mains power supply.
- This appliance can be used by children aged from 8 years and above and persons with reduced physical, sensory or mental capabilities and knowledge, if they have been supervised/instructed and understand the hazards involved.
- Children shall not play with the appliance.
- Children should not perform cleaning or user maintenance, unless they are older than 8 and supervised.
- This appliance is not a toy.
- If the power supply cord, plug or any part of the appliance is malfunctioning or if it has been dropped or damaged, cease using the product immediately to avoid potential injury.
- This appliance contains no user serviceable parts, only a qualified electrician should carry out repairs. Improper repairs may place the user at risk of harm.
- Keep the appliance and its power supply cord out of the reach of children.
- Keep the appliance out of the reach of children when it is switched on or cooling down.
- Keep the appliance and its power supply cord away from heat or sharp edges that could cause damage.
- Keep the power supply cord away from any parts of the appliance that may become hot during use.
- Keep the appliance away from other heat emitting appliances.
- Do not allow the power supply cord to hang over worktops, touch hot surfaces or become twisted.
- Do not immerse the electrical components of this appliance in water or any other liquid.
- Do not operate the appliance with wet hands or if any connections are wet.
- Do not leave the appliance unattended whilst connected to the mains power supply.
- Do not remove the appliance from the mains power supply by pulling the cord; switch it off and remove the plug by hand.
- Do not pull or carry the appliance by its power supply cord.
- Do not use the appliance for anything other than its intended use.
- Do not use any accessories other than those supplied.
- Do not use this appliance outdoors.
- Do not store the appliance in direct sunlight or in high humidity conditions.
- Do not move the appliance whilst it is in use.
- If this appliance falls or accidentally becomes immersed in water, unplug it from the wall outlet immediately. Do not reach into the water.
- Always unplug the appliance after use and allow it to cool fully before any cleaning, user maintenance or storing away.
- Always use the appliance on a stable, heat-resistant surface, at a height that is comfortable for the user.
- This appliance should not be operated by means of an external timer or separate remote control system.
- Use of an extension cord with the appliance is not recommended.
- This appliance is intended for domestic use only. It should not be used for commercial purposes.



CAUTION: Hot surface – do not touch hot sections or heating components of the appliance.



WARNING: Boiling water and steam can cause serious injury; exercise extreme caution when using this appliance.

**UK
CA CE**

EN | Disposal of Waste Batteries and Electrical and Electronic Equipment



This product is labelled with this crossed out wheel bin symbol in accordance with European Directive 2012/19/EC to indicate that it must not be disposed of with your other household waste. Due to the presence of hazardous substances, mixtures or components, electrical and electronic devices that are not subject to selective sorting are potentially dangerous to the environment and human health. Please check your local city office or waste disposal service for the return and recycling of this product.

Manufactured by:
Ultimate Products UK Ltd.,
Victoria Street, Manchester OL9 0DD. **UK.**
Ultimate Products Europe Ltd.,
19 Baggot Street Lower, Dublin D02 X658. **ROI.**

MADE IN CHINA.

CD260324/MD000000/V1