



Send Us a Text: 1-812-652-2525
(US and Canada Only.
Carrier Fees May Apply)



Find Us Online: www.safety1st.com
Email Us: support@djgusa.com



Give Us a Call: 1-800-544-1108
(Toll Free, US and Canada Only)



Replacement Parts List

- Chest Clip
- Canopy Hoop
- Harness Straps
- SafetySlide™ Base
- Buckle Assembly
- Locking Clip
- Seat Pad Set
- Instructions

For parts availability and questions, call, email, text, or chat.
If requested color is not available, similar color will be substituted.
Applicable tax and shipping and handling will also be added.

©2024 Dorel Juvenile Group, Inc. Safety 1st™ and the Safety 1st logo and design are trademarks of Dorel Juvenile Group, Inc. (800) 544-1108 www.safety1st.com. Styles, colors, and labeling may vary. Los estilos, colores y etiquetado pueden variar. Made in CHINA. Hecho en CHINA. Distributed by (distribuido por) Dorel Juvenile Group, Inc., 2525 State St., Columbus, IN 47201-7494. Dorel Juvenile Canada, 2233 Argentia Road, Suite 110, Mississauga, ON L5N 2X7. Representante exclusivo en Chile: DOREL JUVENILE CHILE S.A. Av. del Parque 4161, oficina 602 A, Huechuraba, Santiago, Chile - Fono: 56 2 24971500 - www.infanti.cl - www.dorel.cl. Importado y distribuido en Perú por: COMEXA COMERCIALIZADORA EXTRANJERA S.A. SUCURSAL DEL PERÚ - Los Libertadores 455, San Isidro, Lima 27, Lima, Perú RUC 20431062870 - Fono: 4413029 - www.infanti.com.pe. En Centro América, Caribe y Ecuador por: Best Brands Group S.A. - Av. Balboa, Bay Mall Plaza, Planta Baja, local 9, Panamá. - Fono: (507) 300 2884. En Colombia por: Baby Universe S.A.S. - Vía 40 No. 77-29, Barranquilla, Colombia - Fono: (575) 353 1110 Importador: DJGM, S.A. DE C.V. Gabriel Mancera No. 1041 Col. Del Valle, Benito Juárez C.P. 03100 México, Ciudad de México R.F.C. DJG140305GN9 Tel. (55) 67199202

onBoard™ Slide and onBoard™ Slide DLX Infant Car Seat featuring SafetySlide™ Base

Your model may look different than the one shown.

Read all instructions BEFORE USING this car seat.

KEEP INSTRUCTIONS FOR FUTURE USE.

⚠ Failure to follow the warnings on the labels and in the instruction manual can result in serious injury or death to your child. Serious injury may include paralysis and/or permanent brain injury.

4358-8632 11.12.24



Getting Started	3
Parts of the Car Seat.....	4
Accessory Use.....	6
Car Seat Mode Information.....	8
Canopy Use.....	9
Carrier Use.....	10
Vehicle Installation with the Base	12
Installing the Base with a Vehicle Belt	13
Installing the Base with Rigid LATCH Connectors	17
Using the Base	19
Using the Base Foot.....	20
Attaching the Car Seat to the Installed Base	21
Removing the Car Seat from the Installed Base	24
Securing Your Child in the Car Seat	25

Rear-Facing Mode	28
Rear-Facing Child Fit Requirements	29
Rear-Facing Use with an Installed Base	32
Vehicle Installation without the Base.....	35
Making Adjustments to the Car Seat	40
Changing the Harness Strap Position.....	41
Changing the Buckle Position	44
Adjusting the Harness System for Smaller Infants	47
Wash and Care	51
Removing the Canopy	52
Removing the Harness System	53
Removing the Seat Pad Set for Cleaning.....	56

Cleaning the Seat Pad Set and Parts of the Car Seat	58
Installing the Seat Pad Set and Harness System	59
Installing the Canopy.....	64
Vehicle Belt and LATCH Information	65
Vehicle Belts	66
LATCH Lower Anchor Bars.....	70
Safety Information	72
Child Restraint Use	73
Vehicle Seating Position	74
Installation in Vehicle.....	75
Replacement and Expiration	76
Registration and Safety Notices.....	77
Aircraft Information	78
Warranty	79

Getting Started

To help you get started using your child's new car seat (also known as a child restraint), these are the four main tasks you'll need to complete.

1

**Install the car seat
in your vehicle.**

2

**Measure
your child.**

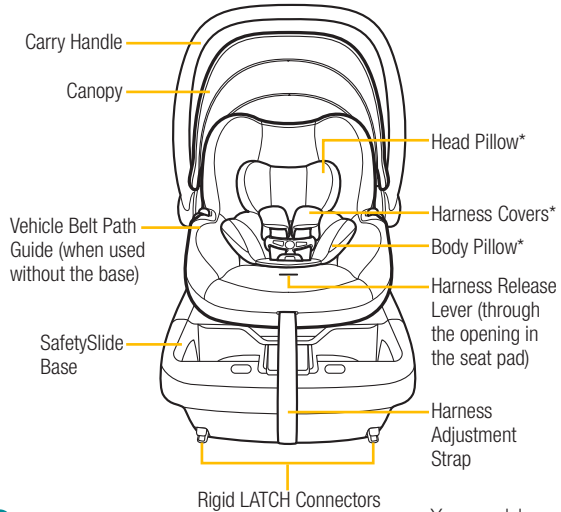
3

**Adjust the car seat
to fit your child.**

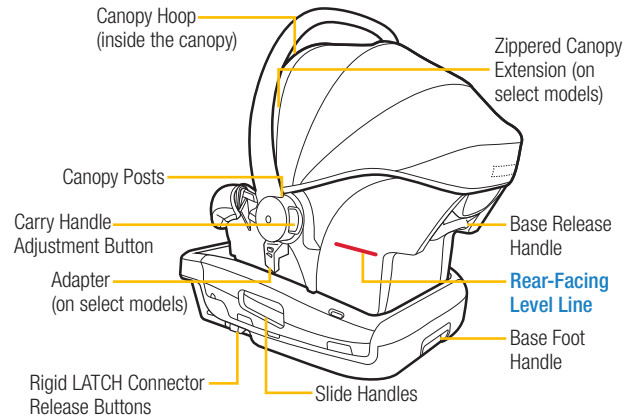
4

**Secure your child
in the car seat.**

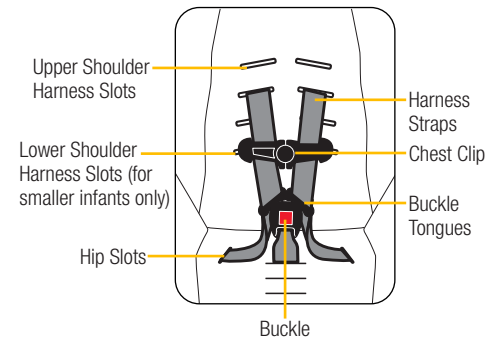
Front View



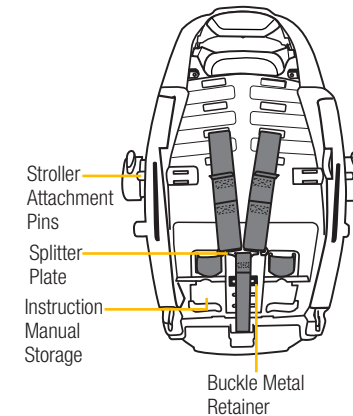
Side View



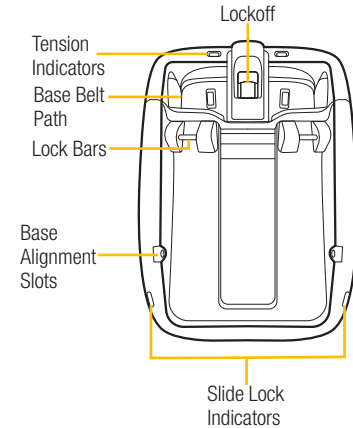
Harness System



Bottom of the Car Seat

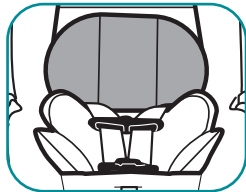


Top View of the Base

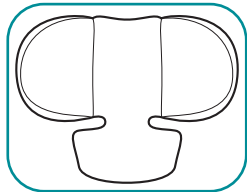


Your model may look different than the one shown.
*See page 6 for accessory use.

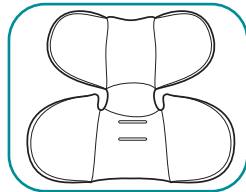
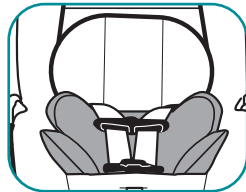
Head and Body Pillows (on select models)



Head Pillow



Body Pillow



When using the head pillow, make sure it does not cover your infant's face in any way. **The head and body pillows MUST be used together.**

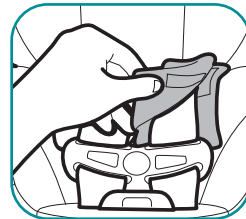
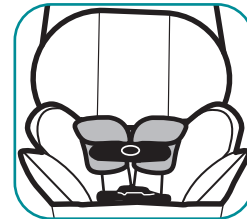
To remove the head and body pillows:

1. Reach behind the body pillow and gently remove the harness straps from the side notches in the head pillow. Pull the head pillow up from behind the body pillow.
2. Unfasten the chest clip and unbuckle the harness. Pull the buckle down through the slot in the body pillow. Gently slide the body pillow out from behind the harness straps.

To install the head and body pillows:

1. Pull the buckle through the corresponding slot in the body pillow. Tuck the upper part of the body pillow beneath the harness straps. Route the buckle tongues around the center narrow portion of the body pillow.
2. Tuck the bottom of the head pillow behind the upper part of the body pillow. Route the harness straps by the shoulder slots through the notches in the head pillow.

Harness Covers (on select models)



The harness covers help provide comfort to your child's neck. If the harness covers will not allow proper positioning of the chest clip or interfere with getting a tight-enough harness fit for a smaller infant, remove them and **DO NOT** use. Store them until your child is large enough to use the harness covers while maintaining a properly fitting harness.

To remove the harness covers:

Pull apart the fastening strips and pull the harness covers off the harness straps.

To install the harness covers:

Place the upper part of the harness strap above the chest clip into the harness cover, making sure the larger half of the harness cover is beneath the strap and the fastening strips are on the outer edge of the strap. Reattach both sides of the fastening strips. Repeat with the other harness cover.



⚠️ WARNING

Failure to follow these instructions may result in serious injury or death to your child. Serious injury can include paralysis and/or permanent brain injury. Be certain to measure your child's weight and height (do not guess) before using this car seat. This car seat can only be used **REAR-FACING**.

Your child's height, weight, and age determine how the car seat should be placed in the vehicle.

Children vary widely in body size, shape, and temperament—**please consult your doctor before switching between any modes within the limits and fit requirements of the car seat.**



Rear-Facing Mode

**4–30 lb (1.8–13.6 kg) and
32 in. (81.3 cm) or less in height**

This car seat can only be used **Rear-Facing**. In this **Rear-Facing** only car seat, your child can use this restraint until they outgrow any one of the above.

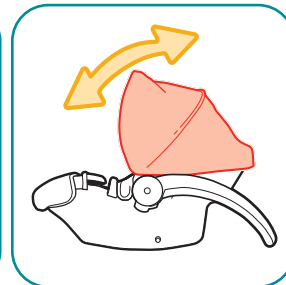
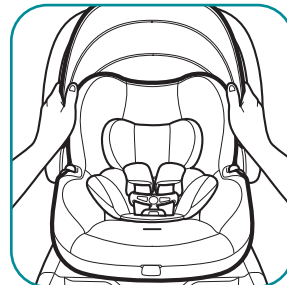
Rear-Facing Child Fit Requirements PAGE 29

Rear-Facing Use with an Installed Base PAGE 32

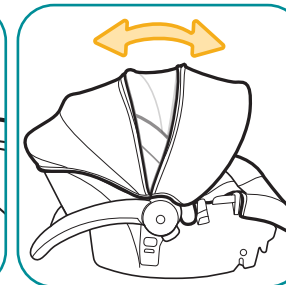
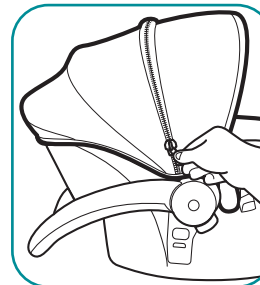
Vehicle Installation without the Base PAGE 35

Infants and Toddlers

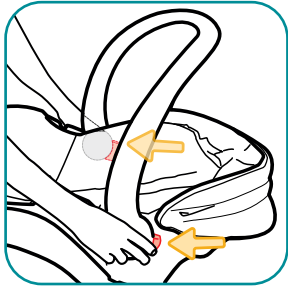
Children must ride rear-facing and remain rear-facing until they reach the maximum weight or height limits for rear-facing mode. Rear-facing child restraints installed behind another vehicle seat must be installed touching the back of the vehicle seat in front of it, or be as close as possible.



Grasp both sides of the canopy hoop and move it front to back to the desired position.



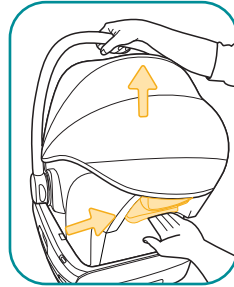
On select models only, unzip the canopy to extend it and open a peek-a-boo screen. To retract the extended canopy, grasp both sides of the canopy hoop and move it slightly back, and then zip it closed.



To adjust the carry handle position:

Squeeze the adjustment buttons on both sides of the carry handle. Rotate the carry handle up or down to the desired position and then release both buttons. Make sure both adjustment buttons are in the locked position.

The carry handle **MUST** be upright **AND** locked when carrying and when installed in the vehicle.



To remove the carrier from the base:

From the back of the car seat, push the base release handle up and lift the car seat out of the base.

To attach the car seat to an installed base, see page 21.

⚠ WARNING

Read **ALL** instructions before using child restraint as a carrier.

NEVER use carrier unless child is properly secured.

Use only as a carrier by children weighing 4–30 pounds (1.8–13.6 kg) and 32 inches (81.3 cm) or less in height.

NEVER leave child unattended. Always keep child within arm's reach.

Suffocation Hazard: Infant carrier can roll over on soft surfaces and suffocate child. **NEVER** place carrier on beds, sofas, or other soft surfaces.

Strangulation Hazard: Children have **STRANGLED** in loose or partially buckled harness straps. Fully restrain the child even when carrier is used outside the vehicle.



Fall Hazard: Child's activity can move carrier. **NEVER** place carrier on counter tops, tables, or any other elevated surface.

The carrier can fall from the shopping cart. **DO NOT** use on shopping cart.

DO NOT use the carrier if it is damaged or broken, or if any parts are missing.



There are two methods for installing the car seat base in your vehicle. **Use only one:**

Vehicle Belt



Lap/Shoulder Belt



Lap Belt

OR

Rigid LATCH Connectors



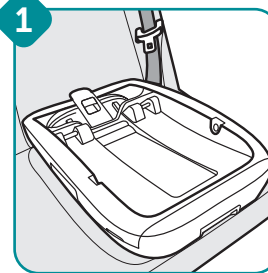
Before installing the car seat base:

- Review your vehicle owner's manual to determine the type of vehicle belts in your car and how to use them to lock a car seat in place **OR** to locate the LATCH: lower anchor seating positions. See also Vehicle Belts on page 66 and LATCH: Lower Anchor Bars on page 70.
- See page 35 if you want to install the car seat without the base.

! WARNING

DO NOT use both the rigid LATCH connectors and vehicle belt at the same time to install the base.

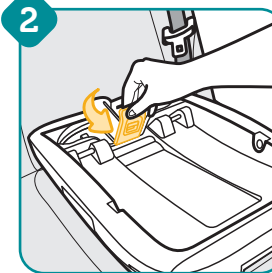
1



Place the base **Rear-Facing** in the back seat

Center the base in the chosen seating position. The car seat base **MUST** be flat on the vehicle seat.

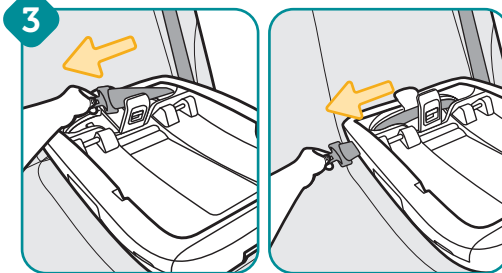
2



Lift the lockoff release lever

Keep the lockoff open to route the belt.

3

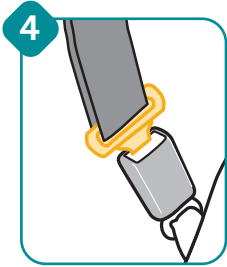


Route the vehicle belt through the base belt path

Route the lap or lap/shoulder belt through the vehicle belt path guide and then pull it across the top of the car seat and out the other side.

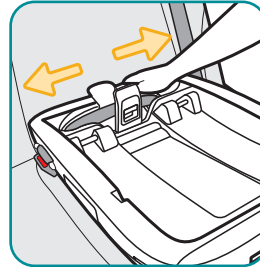
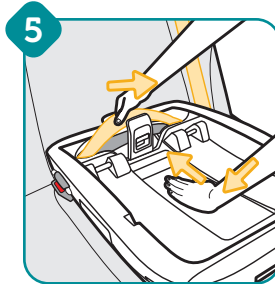
DO NOT twist the belt.

continued on next page



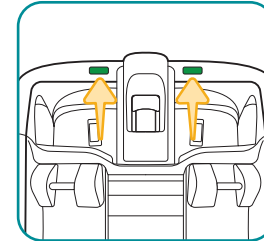
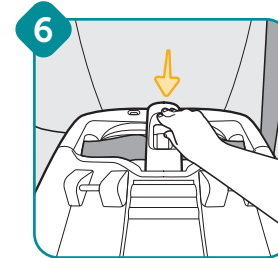
Buckle the vehicle belt

If your vehicle belt has a switchable retractor, make sure it is in locking mode. Refer to page 68 or your vehicle owner's manual.



Tighten the belt

Place your hand in the base. Firmly push the base down and back towards the vehicle seatback while pulling the belt towards you in line with the belt path.



Push the release lever down to close the lockoff and check the tension indicators

The red on both indicators will turn completely green when the vehicle belt is tightened correctly. No red should be showing.



If red is showing, try:

- Pulling the belt tighter; **OR**
- Reinstalling the car seat: **OR**
- Changing to a different seating location.

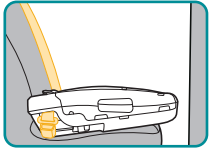
For help with installation, please call Consumer Care at 1-800-544-1108.

If red is still showing or the lockoff cannot close properly, then install the base with the rigid LATCH connector installation (see page 17) or install the seat without the base (see page 35).

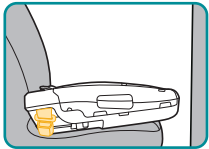
continued on next page



FINISHED!



Lap/Shoulder Belt



Lap Belt

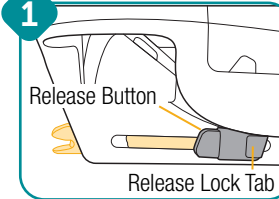


When using the passenger and driver side locations, the car seat **MUST** be touching the back of the seat in front of it, or be as close as possible.

- Is the vehicle belt locked? See step 4.
- Is the belt tightened enough so that the tension indicator is fully green? Check the tightness of the install often to make sure it has not loosened. See step 6.

To use a car seat with the base, see page 32.

1

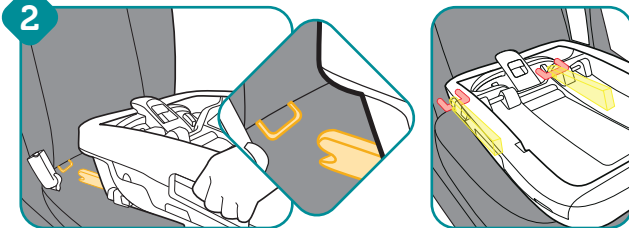


Extend the rigid LATCH connectors from the base

Lift the release lock tab towards you and then push in the button on the other end to slide the button and extend the connector.

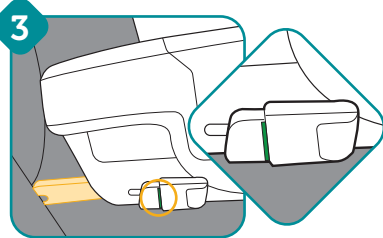
Repeat for the other side.

2



Attach the rigid LATCH connectors to the vehicle's lower anchors

Place the base on the vehicle seat so that the connectors are aligned with the lower anchors. Push the base towards the back of the vehicle seat until both the connectors are attached to the anchors. The connectors will ratchet into the base as you push the base into the seat cushion.

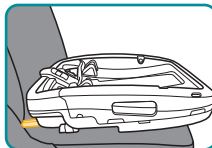


Check the rigid LATCH connector installation

Verify the base is securely attached to the lower anchors by checking for the green indicator on both rigid LATCH connector release buttons **AND** pulling the base away from the vehicle seatback.

If the green does not appear on either button or the rigid LATCH connectors are not properly connected to the lower anchors when you pull the base away from the vehicle seatback, then make sure the connectors are fully extended. Push the base back further against the vehicle seatback or redo the installation.

FINISHED!

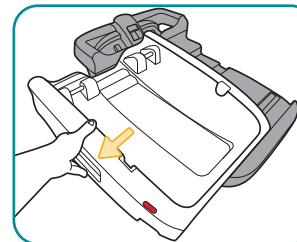


Rigid LATCH Connectors

When using the passenger and driver side locations, the car seat **MUST** be touching the back of the seat in front of it, or be as close as possible.

Are the rigid LATCH connectors securely attached to the vehicle's lower anchors? See step 3.

To use a car seat with the base, see page 21.



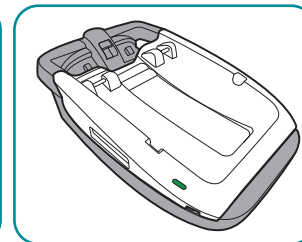
When the base is installed in a vehicle, you can slide it in and out when attaching and removing the carrier.

To slide the base out:

Squeeze and unlock the slide handle on the side of the base while pulling the slide out towards you.

To slide the base in:

Push the slide in until it locks into place on the base. Verify the base is securely locked



by checking that the slide indicators are green **AND** pushing or pulling the slide to ensure it does not move. If the indicators are red or if the slide moves, then the slide is not fully locked.

To install the base, see page 12.

To attach the car seat to an installed base, see page 21.

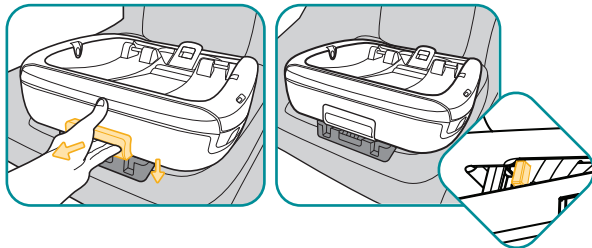
To remove the car seat from an installed base, see page 24.

WARNING

You **MUST ALWAYS** slide base back to center to lock it in place before use.

Slide unlocked position **ONLY** for use when:

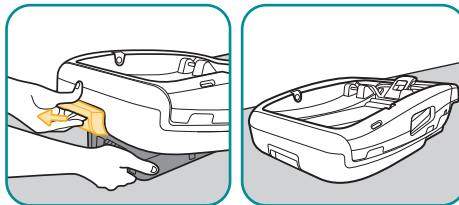
- Placing car seat shell onto the base.
- Placing child into car seat.
- Removing car seat shell from the base.
- Removing child from car seat.



The base foot allows you to adjust the position of the car seat if the **Rear-Facing Level Line** is not parallel with the ground when the carrier is installed on the base.

To open the base foot:

Lift up the base slightly while pulling out the base foot handle. The base foot will pop out automatically. Push the handle back in completely to extend the locking pins behind the support legs and lock the base foot in place.

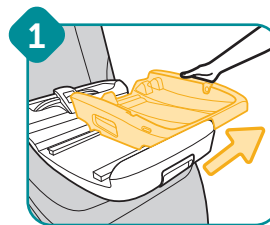


To close the base foot:

Lift the base up slightly. While pulling the base foot handle out, push up on the bottom of the base foot until it snaps into place in the storage compartment.

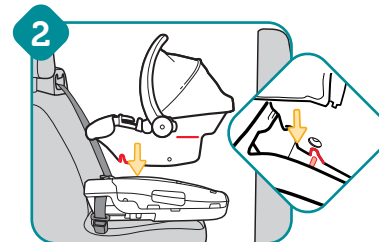


- The base **MUST** be installed in the vehicle before attaching the car seat. For details on installing the base with a vehicle belt, see page 13. For details on installing the base with rigid LATCH connectors, see page 17.
- If you want to use the car seat without the base, see page 35.



Slide the base out

Squeeze the slide handle while pulling the slide out towards you.



Attach the car seat to the base

Align the slots on the side of the car seat with the lock bars on the base.

Push down firmly on the carry handle and front of the car seat until it clicks, locking it in place on the base.

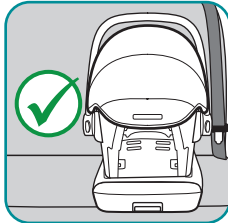
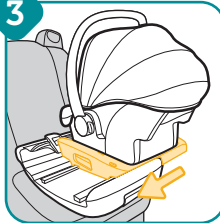
Pull up on the front two corners of the car seat by the child's feet to make sure it is locked to the base.

The carry handle **MUST** be upright and locked when installed in the vehicle.

continued on next page

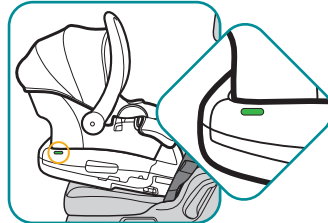


3

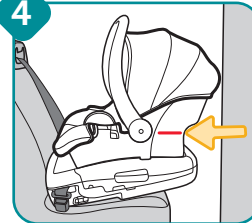


Slide the base in and make sure it is securely locked in place

Push in the slide until it locks into place. Verify the base is securely locked by checking that the slide indicators are green **AND** pushing or pulling the slide to ensure it does not move. If the indicators are red or if the slide moves, then the slide is not fully locked.



4



Check the level line

Redo the base installation if the level line is not parallel with the ground. You can also use the base foot to adjust the angle of the base (see page 20).

If your child cannot sit up unassisted, you may install the car seat slightly more reclined than the level line shows.



To remove the car seat from the base, see page 24.

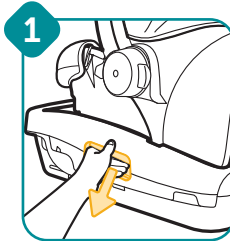
For **Rear-Facing Child Fit Requirements**, see page 29.

For **Rear-Facing Use with an Installed Base**, see page 32.

To install the car seat without the base, see page 35.

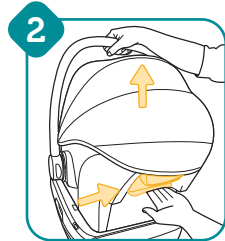
! WARNING

When installing with a base, only use this car seat with a compatible Safety 1st Infant Car Seat Base. Failure to use a correct base can cause serious injury or death. Failure to securely attach child restraint to base can result in serious injury or death. Serious injury can include paralysis and/or permanent brain injury.



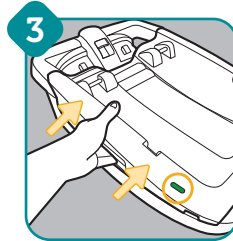
Slide the base out

Squeeze the slide handle while pulling the slide out towards you.



Remove the car seat from the base

From the back of the car seat, push the base release handle up and lift the car seat out of the base.



Slide the base in and make sure it is securely locked in place

Push in the slide until it locks into place. Verify the base is securely locked by checking that the slide indicators are green **AND** pushing or pulling the slide to ensure it does not move. If the indicators are red or if the slide moves, then the slide is not fully locked.

⚠ WARNING

You **MUST ALWAYS** slide base back to center to lock it in place before use.

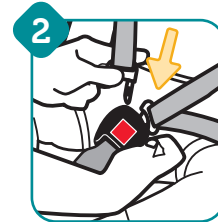
Slide unlocked position **ONLY** for use when:

- Placing car seat shell onto the base.
- Placing child into car seat.
- Removing car seat shell from the base.
- Removing child from car seat.



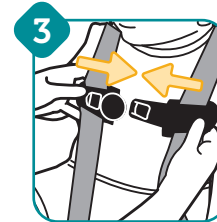
Place your child in the car seat

Your child's bottom and back should be flat against the car seat.



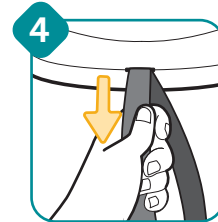
Buckle the harness

Push the buckle tongues into the buckle until they click. Pull the harness straps up to make sure the buckle is locked.



Fasten the chest clip

Insert the right half of the chest clip into the left half and snap them together.



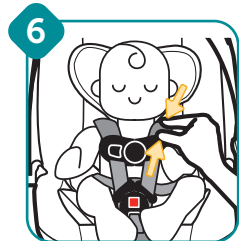
Tighten the harness

Pull the harness adjustment strap straight out to snugly tighten the harness system.



Position the chest clip

Slide the chest clip up the harness straps and position it at mid-chest (even with the armpits) and away from your child's neck.



Check the harness tightness

If harness covers are installed, unfasten one of them. Try to pinch the harness at the shoulders vertically between your index finger and thumb as shown.

If your fingers slip off, the harness is tight enough.

If you can pinch the harness strap, tighten it more (see step 4).

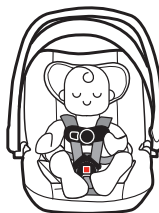
Refasten the harness cover if applicable.



A snug strap should not allow any slack. It lies in a relatively straight line without sagging. It does not press on the child's flesh or push the child's body into an unnatural position.

If one side of the harness is tighter than the other, lengthen the tighter side by pulling up the harness near the hip slot.

FINISHED!



Your child is now secured in the car seat.

Check your child's fit often and make any needed adjustments to the car seat as they grow.

To remove your child from the car seat:

1. Loosen the harness straps. Push down on the harness release lever (through the opening in the seat pad) while pulling the harness straps away from your child.
2. Unfasten the chest clip. While holding both sides of the chest clip, press the release button with your thumb and pull the chest clip apart.
3. Unbuckle the harness. Press the red button to release the buckle tongues.
4. Remove your child.

Troubleshooting

- **If the buckle or harness release lever sticks: DO NOT LUBRICATE THEM.** Check for dropped food, sticky spilled drinks, dirt, leaves, etc. Clean the buckle or harness release lever with warm water and remove any objects with tweezers. If you cannot adjust the harness to remain tight with the buckle securely locked, **DO NOT** use this car seat.
- **If the harness twists:** Straighten the harness each time you put your child in the car seat. When you remove your child, lock the buckle and tighten the harness so it will be ready for the next use.

! WARNING

Failure to fasten and tighten the harness system correctly may allow the child to be ejected from the child restraint in a crash or sudden stop causing serious injury or death. Serious injury can include paralysis and/or permanent brain injury.



DO NOT mistake comfort for safety. The harness system **MUST** be snugly adjusted.

DO NOT put snowsuits or bulky garments on your child when placing them in the child restraint.

Bulky clothing can prevent the harness straps from being tightened properly.



**4–30 lb (1.8–13.6 kg) and
32 in. (81.3 cm) or less in height**

In this **Rear-Facing** only car seat, your child can use this restraint until they outgrow any one of the following:

- Weight limit: 30 lb (13.6 kg); **OR**
- Height limit: 32 in. (81.3 cm); **OR**

•**Rear-Facing Child Fit Requirements** **PAGE 29**

Rear-Facing Use with an Installed Base **PAGE 32**

Vehicle Installation without the Base **PAGE 35**

⚠ WARNING



NEVER install a rear-facing child restraint in the front seat of a vehicle equipped with an active frontal airbag.

DO NOT use the rigid LATCH connectors along with the vehicle lap or lap/shoulder belt.

DO NOT fasten multiple lower anchor connectors on the same lower anchor bar in the vehicle.

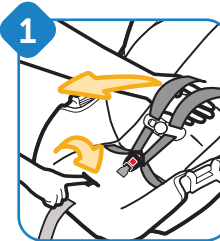
Check the vehicle belt or the rigid LATCH connectors before each use.

Use **ONLY** if the belt or rigid LATCH connectors can be tightened properly and locked securely in place.

DO NOT leave the slide in the unlocked position while vehicle is in motion.

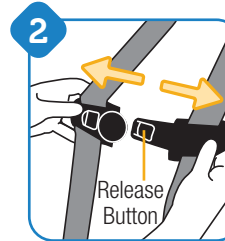
Even when unoccupied, this child restraint **MUST** be firmly secured to the vehicle with the rigid LATCH connectors or with the vehicle seat belt.

This child restraint **MUST ALWAYS** face the rear of the vehicle.



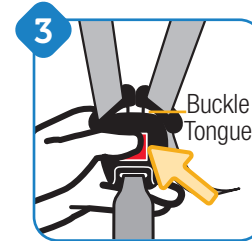
Fully loosen the harness straps

Push down on the harness release lever (through the opening in the seat pad) while pulling the harness straps away from the backrest.



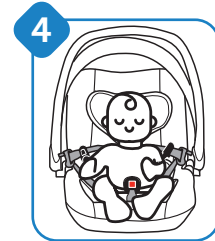
Unfasten the chest clip

While holding both sides of the chest clip, press the release button with your thumb and pull the chest clip apart.



Unbuckle the harness

Press the red button to release the buckle tongues.

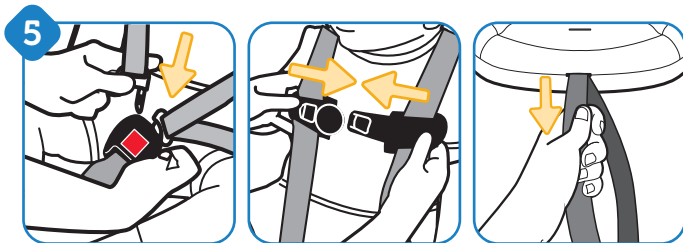


Place your child in the car seat to determine the proper harness fit

Your child's bottom and back should be flat against the car seat.

continued on next page

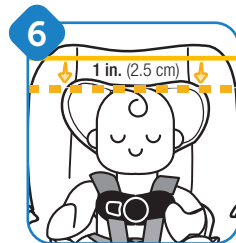




Buckle the harness and fasten the chest clip

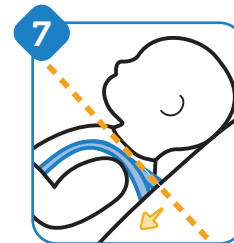
Pull the harness adjustment strap straight out to snugly tighten the harness. Position the chest clip mid-chest (even with the armpits) and away from your child's neck.

See Securing Your Child in the Car Seat on page 25 for details on chest clip position and checking harness tightness.



Check the head position

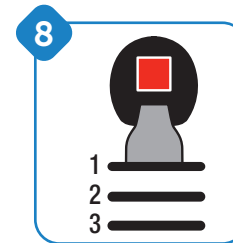
The top of your child's head **MUST be at least 1 in. (2.5 cm) below** the top of the car seat's headrest.



Check the harness strap position

The harness strap **MUST be positioned at or slightly below** the shoulders, never above.

To change the harness strap height, see page 41.



Check the buckle position

- Use the buckle slot closest to your child.
- The buckle strap **should not be underneath or behind** your child.

To change the buckle position, see page 44.



If you cannot achieve a snug harness fit for your child, see Adjusting the Harness System for Smaller Infants on pages 47–50.

For **Rear-Facing Use with an Installed Base**, see page 32.

To install the car seat without the base, see page 35.

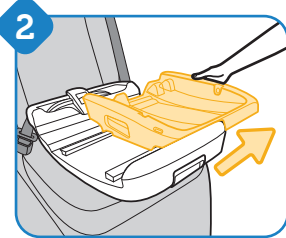


Rear-Facing Use with an Installed Base



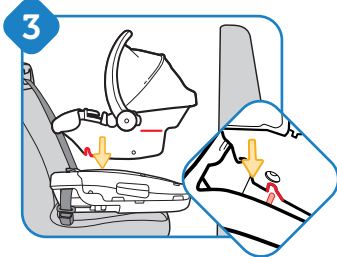
Secure your child in the car seat

For complete details on properly securing your child in the car seat, including how to position the chest clip and check for harness tightness, see pages 25–26.



Slide the base out

Squeeze the slide handle while pulling the slide out towards you.



Attach the car seat to the base

Align the slots on the side of the car seat with the lock bars on the base. Push down firmly on the carry handle and front of the car seat until it clicks, locking it in place on the base.

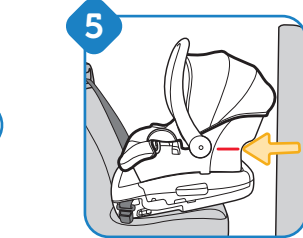
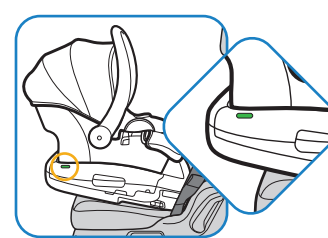
Pull up on the front two corners of the car seat by your child's feet to make sure it is locked to the base.

The carry handle **MUST** be upright and locked when installed in the vehicle.



Slide the base in and make sure it is securely locked in place

Push in the slide until it locks into place. Verify the base is securely locked by checking that the slide indicators are green **AND** pushing or pulling the slide to ensure it does not move. If the indicators are red or if the slide moves, then the slide is not fully locked.



Check the **Rear-Facing Level Line**

Redo the base installation if the level line is not parallel with the ground. You can also use the base foot to adjust the angle of the base (see page 20).

If your child cannot sit up unassisted, you may install the car seat slightly more reclined than the level line shows.

continued on next page



FINISHED!



When using the passenger and driver side locations, the car seat **MUST** be touching the back of the seat in front of it, or be as close as possible.

- Is the slide locked? See step 4.
- Is the level line on the car seat parallel to the ground? See step 5.



Check your child's fit often and make any adjustments to the car seat as they grow. Check the tightness of the installation often to make sure it has not loosened.

To remove the car seat from the base, see page 24.



There are two methods for installing the car seat without the base in your vehicle. **Use only one:**



Lap/Shoulder Belt

OR



Lap Belt

Before installing the car seat without the base:

Check whether your vehicle belts will work with this car seat. Not all vehicle belts will work with car seats. Review Vehicle Belts on page 66 and your vehicle owner's manual to determine the type of vehicle belts in your car and how to use them to lock a car seat in place.

! WARNING



NEVER install a rear-facing child restraint in the front seat of a vehicle equipped with an active frontal airbag.

Check the vehicle belt before each use. Use only if the belt can be tightened properly and locked securely in place.

Even when unoccupied, this child restraint **MUST** be firmly secured to the vehicle with the vehicle seat belt.

This child restraint **MUST ALWAYS** face the rear of the vehicle.

continued on next page

1

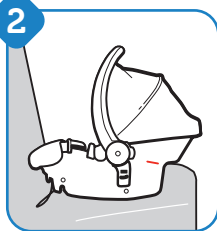


Secure your child in the car seat

To properly secure your child in the car seat, see pages 25–26.

Check your child's fit often and make any needed adjustments to the car seat as they grow.

2

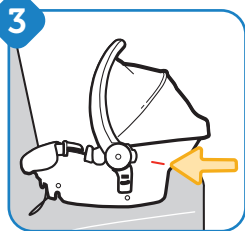


Place the car seat **Rear-Facing** in the back seat

Center the car seat in the chosen seating position.

The carry handle **MUST** be upright and locked when installed in the vehicle.

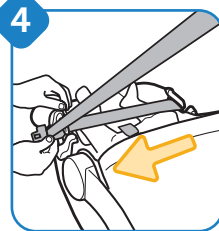
3



Check the **Rear-Facing Level Line**

If your child cannot sit up unassisted, you may install the car seat slightly more reclined than the level line shows.

4

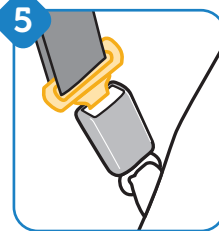


Route the vehicle belt through the belt path guide on the car seat

Insert the lap belt or the lap portion of the lap/shoulder belt through the vehicle belt path guide and then pull it across the top of the car seat and through the belt path guide on the other side.

DO NOT twist the belt.

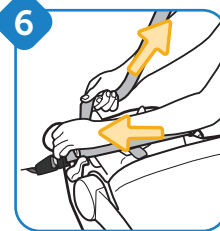
5



Buckle the vehicle belt

If your vehicle belt has a switchable retractor, make sure it is in locking mode. Refer to page 68 or your vehicle owner's manual.

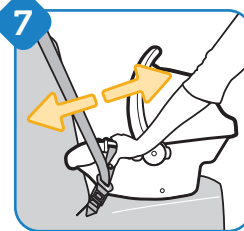
6



Tighten the vehicle belt

Lay your forearm across the car seat at the belt path while pulling up on the belt to tighten it.

7



Check the belt tightness

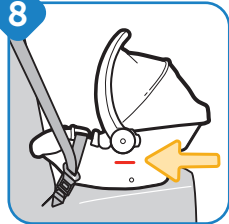
Hold the car seat at the belt path with your non-dominant hand. Push and pull the car seat from side to side. The car seat should not move more than 1 in. (2.5 cm).

If the car seat moves more than 1 in. (2.5 cm), you can try:

- Pulling the belt tighter; **OR**
- Reinstalling the car seat: **OR**
- Changing to a different seating location

continued on next page

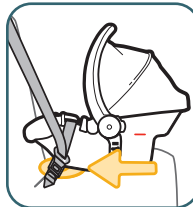
8



Recheck the **Rear-Facing Level Line**

If your child cannot sit up unassisted, you may install the car seat slightly more reclined than the level line shows.

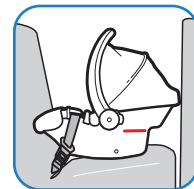
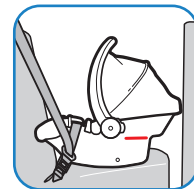
Redo the installation if the car seat is not reclined correctly.



Only if necessary, you may place a tightly rolled towel(s) or foam pool noodle(s) under the front of the car seat base to help make the **Rear-Facing Level Line** parallel with the ground.

Check often to make sure padding is still in place and the belt is tight.

FINISHED!



When using the passenger or driver side locations, the car seat **MUST** be touching the back of the vehicle seat in front of it, or be as close as possible.

- Is the carry handle in the correct position? See step 2.
- Is the vehicle belt buckled and the switchable retractor locked? See step 5.
- Is the belt tightened enough so that the car seat does not move more than 1 in. (2.5 cm) from side to side? See steps 6 and 7.
- Is the level line parallel with the ground? See step 8.

Check your child's fit often and make any adjustments to the car seat as they grow.

Making Adjustments to the Car Seat

Follow the steps in these sections when you need to adjust the car seat to better fit your child.



1

Changing the
Harness Strap
Position

2

Changing the
Buckle Position

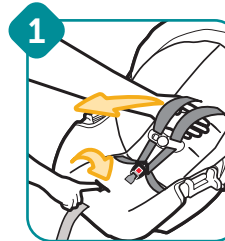
3

Adjusting the
Harness System for
Smaller Infants

WARNING

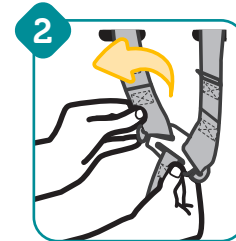
The harness system **MUST** be installed correctly. **DO NOT** use a child restraint with damaged harness straps.

Changing the Harness Strap Position



Fully loosen the harness straps

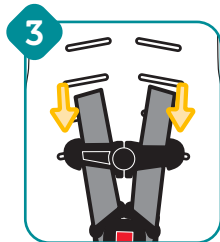
Push down on the harness release lever (through the opening in the seat pad) while pulling the harness straps away from the backrest.



Remove both harness strap loops from the splitter plate

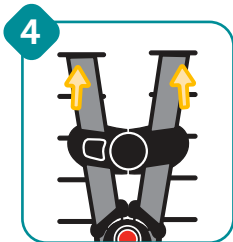
Turn the car seat over to access the splitter plate.

continued on next page



Pull the harness straps out of the shoulder harness slots

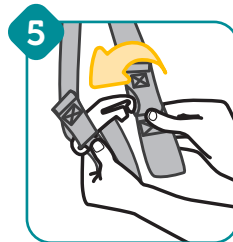
Turn the car seat over and back around to the front to remove the harness straps from the shoulder slots.



Rethread the harness straps into the correct shoulder slots for your child

Make sure the harness straps go through the slots in both the seat pad and the car seat.

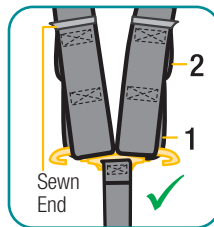
DO NOT twist the harness straps as you insert them into the shoulder slots.



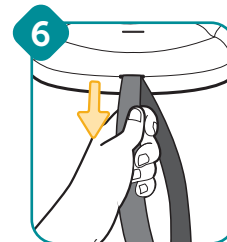
Attach the first harness strap loops to the splitter plate

Turn the car seat over. The sewn ends of the harness strap loops **MUST** face towards you.

DO NOT twist the harness straps or the harness adjustment strap.



Make sure the same lower harness strap loops (labeled "1" above) are fitted completely on both sides of the splitter plate. The loops labeled "2" are for smaller infants only (see page 49).



Tighten the harness adjustment strap

Turn the car seat over and pull the harness adjustment strap straight out to tighten the harness. Slide the chest clip up or down as needed.



For **Rear-Facing Child Requirements**, see page 29.

To check harness tightness, see pages 25–26.

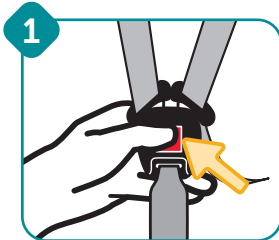
If you cannot achieve a snug harness fit for your child, see Adjusting the Harness System for Smaller Infants on pages 47–50.

Check the harness straps often for any wear or damage.



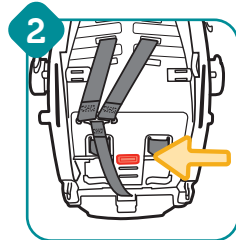
WARNING

Failure to place buckle's metal retainer completely through pad and child restraint can result in serious injury or death. Serious injury can include paralysis and/or permanent brain injury.



Unbuckle the harness

Press the red button to release the buckle tongues.

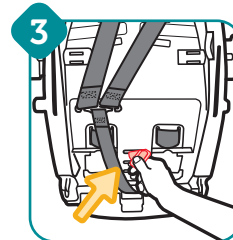


Turn the car seat over

Locate the buckle's metal retainer on the bottom of the car seat.



If the buckle had been adjusted for a smaller infant, the metal retainer will not be visible from the bottom of the seat. From the top of the seat, push the metal retainer down through the middle slot (pull the front of the car seat pad up for easier access). You'll then be able to access the metal retainer from the bottom of the seat. Be sure to tuck the seat pad back in when finished.



Rotate the metal retainer and push it through the slot

Push the metal retainer through the slot in both the car seat and the seat pad.



Pull the buckle out

From the top of the car seat, pull the buckle out.

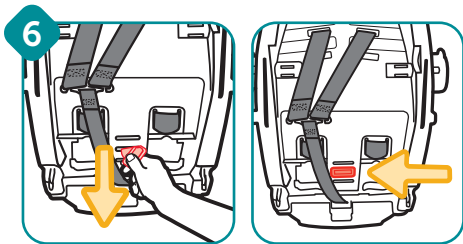


Insert the metal retainer into the slot closest to the child

The buckle **MUST** face out. The buckle strap should not be underneath or behind your child.

continued on next page

Adjusting the Buckle Strap for Smaller Infants




Pull the metal retainer through the slot

Turn the car seat over and pull the metal retainer completely through the slot in both the seat pad and the car seat. Rotate the metal retainer into position.



Check the buckle

Pull up on the buckle to make sure it is secured. The buckle **MUST NOT** pull out.




For **Rear-Facing Child Fit Requirements**, see page 29.

To check harness tightness, see pages 25–26.

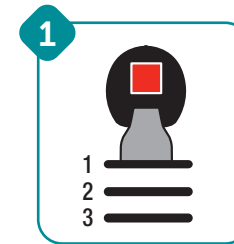
If you cannot achieve a snug harness fit for your child, see *Adjusting the Harness System for Smaller Infants* on pages 47–50.

 **WARNING**

The harness system **MUST** be installed correctly. **DO NOT** use a child restraint with damaged harness straps.

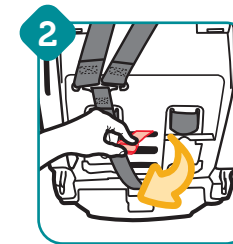


If you cannot achieve a snug harness fit for your infant, you may need to adjust the buckle strap position and/or the harness strap length and location as shown in this section.



Make sure the buckle is in the first slot

To move the buckle to the first slot, see page 44.



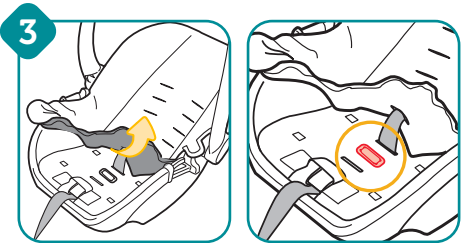
Turn the car seat over to move the metal retainer

While keeping the buckle in the first slot, pull the metal retainer towards you and then push it up into the middle slot.

continued on next page

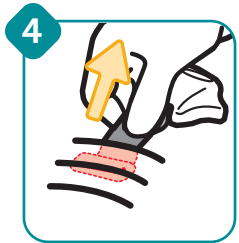


Adjusting the Harness Straps for Smaller Infants



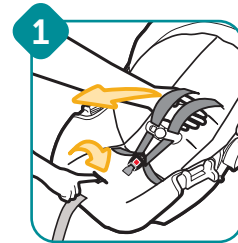
Lift up the front of the car seat pad and lay the metal retainer flat against the car seat

With the car seat upright, lift up the front of the car seat to access the buckle slots. The buckle strap should still be in the first slot while the metal retainer is flat against the car seat in the second slot as shown.



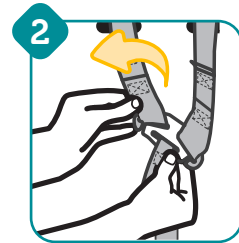
Tuck the car seat pad around the front of the car seat and check the buckle

Pull up on the buckle to make sure it is secured. The buckle **MUST NOT** pull out.



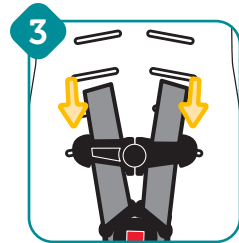
Fully loosen the harness straps

Push down on the harness release lever (through the opening in the seat pad) while pulling the harness straps away from the backrest.



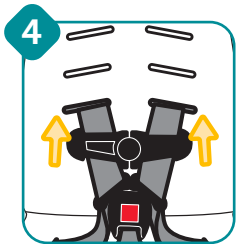
Remove both harness strap loops from the splitter plate

Turn the car seat over to access the splitter plate.



Pull the harness straps out of the shoulder harness slots

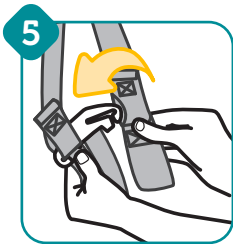
Turn the car seat over and back around to the front to remove the harness straps from the shoulder slots.



Rethread the harness straps into the correct shoulder slots for your child

Make sure the harness straps go through the slots in both the seat pad and the car seat.

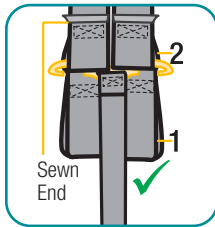
DO NOT twist the harness straps as you insert them into the shoulder slots.



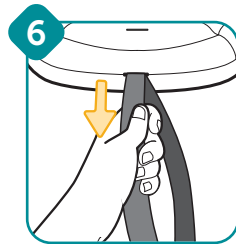
Attach the second harness strap loops to the splitter plate

The sewn ends of the harness strap loops **MUST** face towards you.

DO NOT twist the harness straps or the harness adjustment strap.



Make sure the same upper harness strap loops (labeled "2" above) are fitted completely on both sides of the splitter plate. **DO NOT** use the lower loops (labeled "1" above) for smaller infants.



Tighten the harness adjustment strap

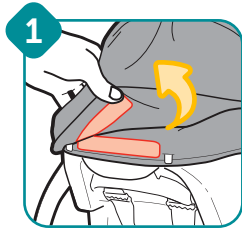
Turn the car seat over and pull the harness adjustment strap straight out to tighten the harness. Slide the chest clip up or down as needed.

Wash and Care

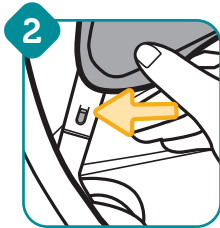
Use the following sections to help you clean and care for your car seat.



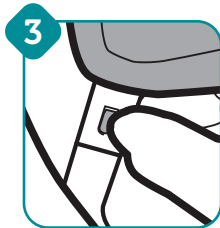
- 1 Removing the Canopy
- 2 Removing the Harness System
- 3 Removing the Seat Pad Set for Cleaning
- 4 Cleaning the Seat Pad Set and Parts of the Car Seat
- 5 Installing the Seat Pad Set and Harness System
- 6 Installing the Canopy



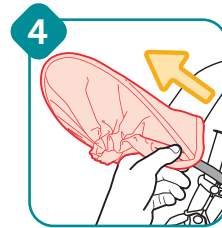
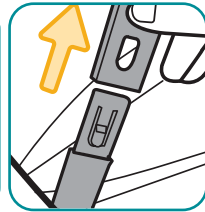
Pull apart the fastening strip that attaches the canopy to the back of the seat pad.



Pull back the canopy fabric from one of the canopy posts to reveal the tab.



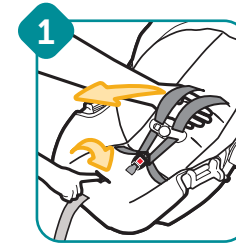
While pressing the tab with your thumb, pull the end of the canopy hoop off the post.



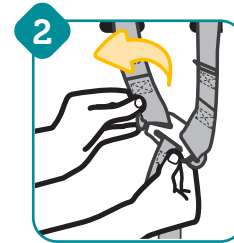
Slide the canopy fabric off the canopy hoop. To remove the canopy hoop from the car seat, repeat step 3 with the other canopy post.

You **MUST** remove the harness system before you can remove the seat pad set for cleaning. Only remove the harness system to clean the seat pad.

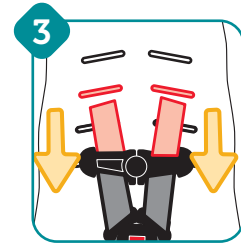
To remove the head and body pillows or harness covers, see pages 6–7.



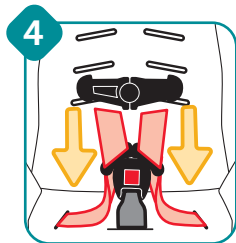
Fully loosen the harness straps. Push down on the harness release lever (through the opening in the seat pad) while pulling the harness straps away from the backrest.



From the back of the car seat, remove both harness strap loops from the splitter plate.



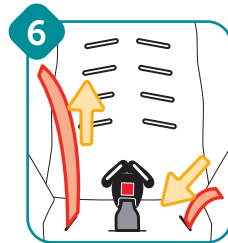
Pull the harness straps out of the shoulder harness slots.



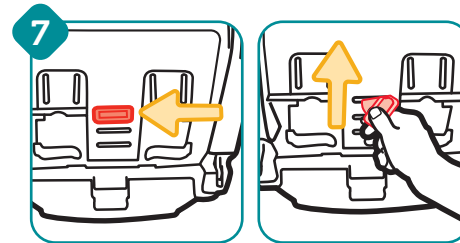
Unthread the harness straps from both sides of the chest clip.



Unthread the harness straps from both buckle tongues. **DO NOT** unbuckle.



Pull the harness strap out of the car seat.

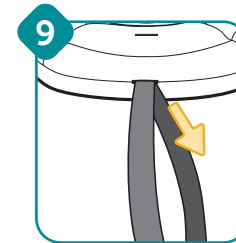


Turn the car seat over. Rotate the metal retainer and push it through the slot in both the car seat and the seat pad.

If the buckle had been adjusted for a smaller infant, the metal retainer will not be visible from the bottom of the seat. From the top of the seat, push the metal retainer down through the middle slot (pull the front of the car seat pad up for easier access). You'll then be able to access the metal retainer from the bottom of the seat.



From the top of the car seat, pull the buckle out.



Pull the sewn end of the harness adjustment strap out from the slot so the strap is fully extended. Once the strap is no longer looped, push the strap through the slot in the seat pad, but **DO NOT** remove it from the seat. See the next section for how to remove the seat pad.



Removing the Seat Pad Set for Cleaning

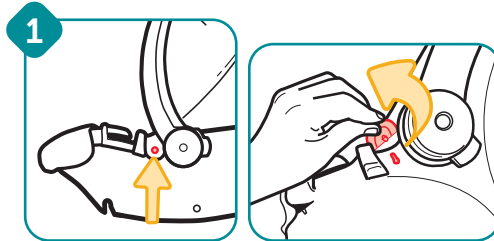
WARNING

DO NOT use the child restraint without the seat pad or with damaged harness straps.

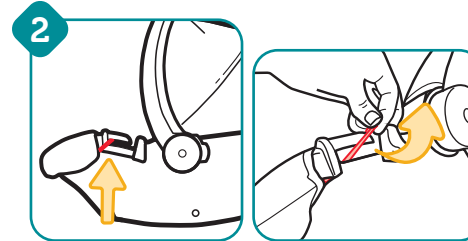


You **MUST** remove the harness system before you can remove the seat pad set for cleaning. See page 53.

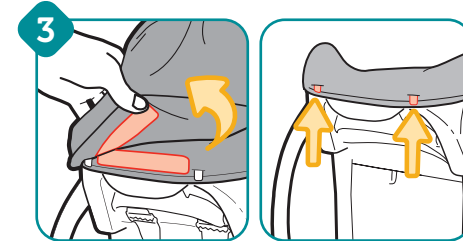
To remove the head and body pillows or harness covers, see pages 6–7.



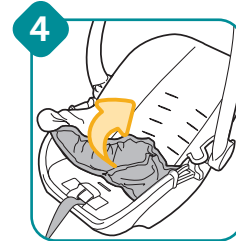
Unfasten the fabric seat pad tab on the side of the car seat. Pull down the fabric tab and then lift it up away from the car seat. Note that you cannot lift the fabric tab off without first pulling it down. Repeat with the fabric tab on the opposite side of the car seat.



Pull the elastic strap off the belt path guide. Repeat on the opposite side of the car seat.



Unfasten the canopy. Pull the back of the seat pad off the tabs above the base release handle.



Gently remove the seat pad, lifting it up from the bottom to the top of the car seat.

To clean the seat pad set and accessories:

Machine wash separately with cold water on gentle cycle. **DO NOT** use bleach. Tumble dry separately for 10–12 minutes on low heat. Remove immediately.

To clean the harness straps:

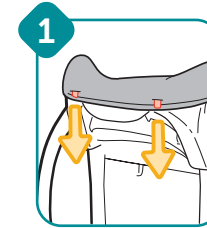
Check the harness straps often for wear or damage. Spot clean using warm sudsy water and a damp cloth. Spilled food and liquids on the car seat may result in mold or bacterial growth over time. These spills could also attract insects or rodents.

To clean the buckle and the car seat:

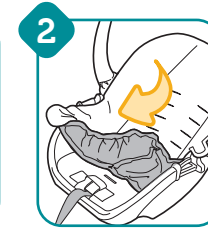
Spot clean using warm sudsy water and a damp cloth. **DO NOT** submerge into water.

To clean the canopy:

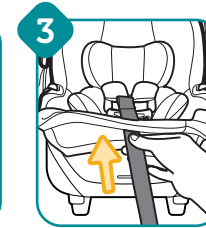
Hand wash only using warm sudsy water. Line dry.



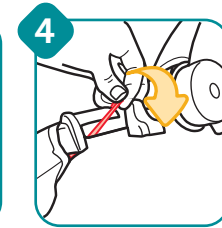
Place the seat pad around the top of the car seat. Push the tabs above the base release handle through the two slots in the pad.



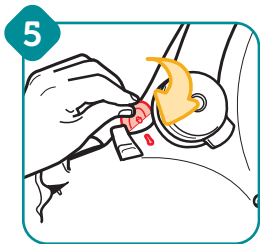
Gently pull the seat pad around the sides of the car seat, but do not cover the bottom of the seat yet.



Pull the harness adjustment strap through the slot in the seat pad. Wrap the seat pad around the bottom of the car seat.



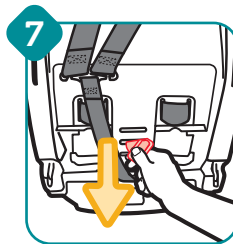
Pull the elastic strap onto the hook on the belt path guide. Repeat on the opposite side.



Attach the fabric pad to the side of the car seat. Repeat on the opposite side.



Insert the metal retainer into the slot closest to the child. The buckle **MUST** face out.



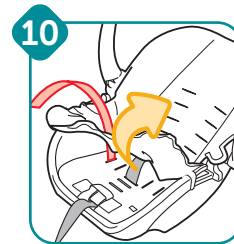
Turn the car seat over and pull the metal retainer completely through the slot in both the seat pad and car seat. Rotate the metal retainer into position.



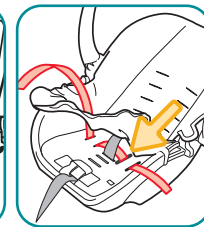
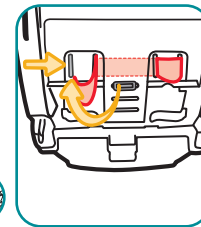
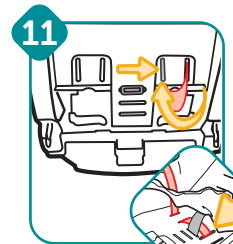
Turn the car seat back over. Pull up on the buckle to make sure it is secured. The buckle **MUST NOT** pull out.



With the sewn end of the harness strap loop facing the buckle, thread the harness strap down through the hip slot.

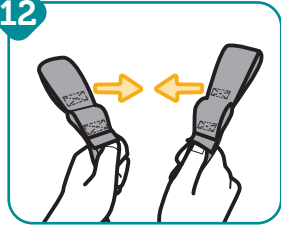


Pull up the front of the seat pad.



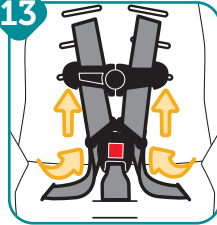
Turn the car seat over. Weave the harness strap in and out of the bottom of the car seat, turning the car seat back over as needed to pull the strap through the slots on the top of the seat. Once routed through the other hip slot, pull the harness strap through the seat pad. Tuck the seat pad back around the front of the car seat once finished.

12



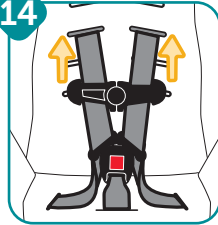
Make sure the straps are even in length. The sewn ends of the harness strap loops **MUST** face each other when you hold them up. Pull the shorter side of the strap up if needed until both harness straps are the same length.

13



Rethread the harness straps through the buckle and chest clip. The harness strap ends go through the back of the buckle tongues and then through the chest clip from front to back.

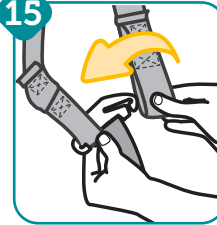
14



Thread the harness straps into the correct shoulder slots for your child.

DO NOT twist the harness straps as you insert them into the shoulder slots.

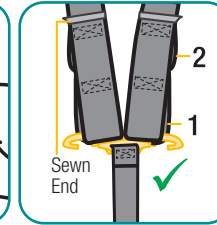
15



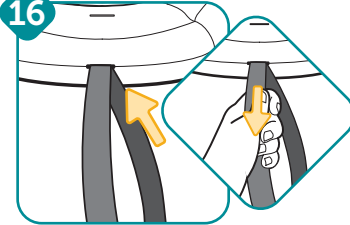
Turn the car seat over and attach the first harness strap loops to the splitter plate. The sewn ends of the harness strap loops **MUST** face towards you.

DO NOT twist the harness straps or the harness adjustment strap.

Make sure the same lower harness strap loops (labeled “1” above) are fitted completely on both sides of the splitter plate. The loops labeled “2” are for smaller infants only (see page 49).



16



Turn the seat over. Form a loop with the harness adjustment strap and insert the sewn end of the strap back into the slot, making sure the sewn end is on the bottom of the loop. Hold the top part of the loop and pull the strap to tighten the harness system. Slide the chest clip up or down as needed.



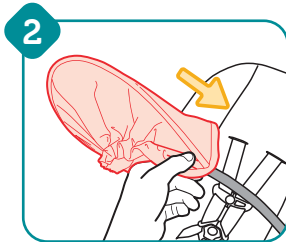
For **Rear-Facing Child Fit Requirements**, see page 29.

To check harness tightness, see pages 25–26.

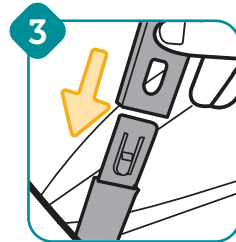
If you cannot achieve a snug harness fit for your child, see Adjusting the Harness System for Smaller Infants on pages 47–50.



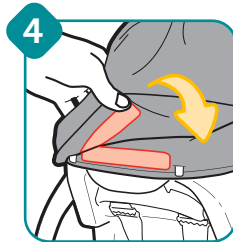
Make sure one end of the canopy hoop is inserted into the post. Insert the other end of the canopy hoop (the one not installed in the post) into the pocket on the canopy fabric.



Slide the canopy fabric over the canopy hoop until the hoop comes through the pocket on the other end.



Insert the end of the canopy hoop onto the canopy post until the tab pops out and it is secured in place.



Reattach the fastening strip on the canopy to the seat pad on the back of the car seat.

Vehicle Belt and LATCH Information

Refer to the following sections for information about the belts and anchors used to install your car seat.

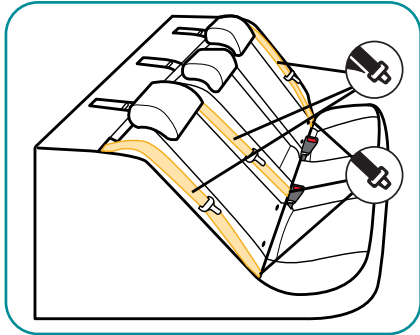


1

Vehicle Belts

2

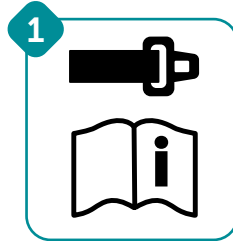
LATCH: Lower Anchor Bars



Your vehicle's features may be considerably different than those pictured here.

If LATCH: lower anchors are not an option in your vehicle, you **MUST** use the vehicle seat belt system to install the car seat.

Not all vehicle belts and seating positions will work with car seats. Follow the steps in this section to learn how to lock a car seat in [Rear-Facing Mode](#) with a vehicle belt.



You MUST review your vehicle owner's manual.

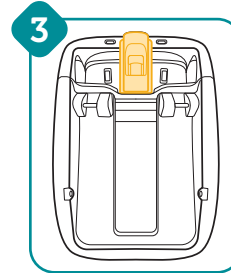
Review your vehicle owner's manual to determine the type of vehicle belts in your car and the seating positions available for installing a car seat.



Check how this car seat can be locked into place with the vehicle belt

The vehicle belt **MUST NOT** loosen after tightening it. This requires locking it by using:

- The base lockoff (see step 3) **AND**
- The vehicle belt's retractor (see step 4) **OR**
- The vehicle belt's latch plate (see step 5)



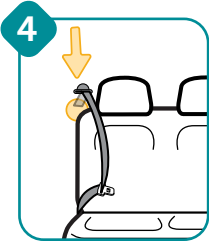
Install the base with the lockoff

When used correctly, the lockoff on the base will lock the vehicle belt. However, you **MUST** also lock the vehicle belt using the retractor or latch plate.

Refer to page 13 for installing the base with the lockoff and then use either the retractor or latch plate as described in steps 4 and 5.

If you are installing the car seat without the base, you **MUST** lock the vehicle belt using the retractor or latch plate. Continue to the next step.

continued on next page



Check the retractor on your vehicle belts

Retractors pull vehicle belts into stored positions and lock the belt to hold passengers in place. The following retractors will work with this car seat:

- Switchable retractor (most vehicles have this type). This retractor can be manually switched to a locking mode. Your retractor **MUST** be in this locking mode to use the vehicle belt with this car seat.

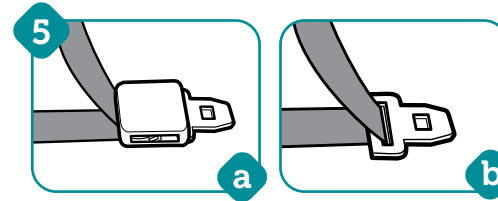
To switch to locking mode:

1. Slowly pull the shoulder belt all the way out and then let it go back into the retractor 1–2 in. (2.5–5 cm).
2. As it retracts, you will likely hear a ratcheting sound.
3. Gently pull the belt to see if it has locked. You will not be able to pull any more of the belt out once the lock has engaged.

- Automatic locking retractor. This retractor always locks. It will automatically lock after slowly pulling the shoulder belt out at least halfway and letting it go back into the retractor 1–2 in. (2.5–5 cm).

Emergency locking retractor

If the retractor does not lock, it is likely an emergency locking retractor. This retractor only locks during a sudden stop or collision. Continue to step 5 to determine if your vehicle belt's latch plate can lock the belt.



Check the latch plates on your vehicle belts

Latch plates are the part of the vehicle belt that goes into the buckle.

To check if the latch plate locks:

1. Buckle the vehicle belt.
2. Slowly pull up on the lap portion of the vehicle belt.
 - a. If the vehicle belt does not slide through the latch plate, it's locked. You can use the locking latch plate with this car seat.

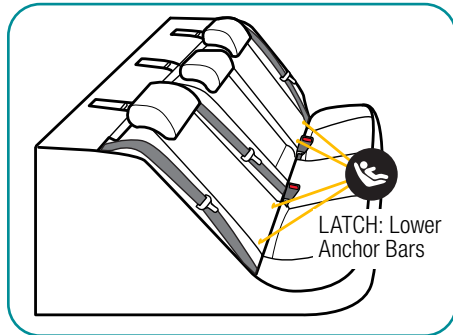
i

NEVER use the following with this car seat:

- Emergency locking retractor lap-only belt
- Inflatable seat belts

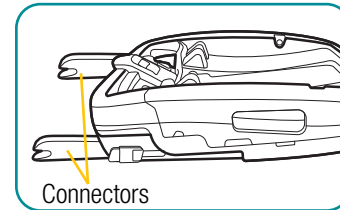
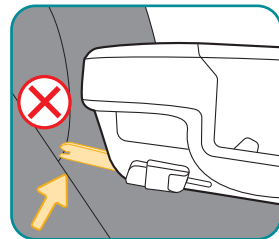
- b. If the vehicle belt slides through the latch plate, it is a sliding latch plate. Sliding latch plates easily slip between the lap and shoulder portions of the belt.

If you have an emergency locking retractor with a sliding latch plate, you MUST use a locking clip. Please contact us for a locking clip; see the back cover.

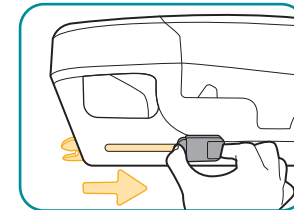


Your vehicle's features may be considerably different than those pictured here.

The lower anchors of **LATCH** (Lower **A**nchors and **T**ethers for **C**hildren) is a universal system for installing car seats without using vehicle seat belts. The rigid LATCH connectors can **ONLY** be used in vehicles that have the lower anchor bars installed in designated seating positions. Most vehicles manufactured after September 2002 are equipped with LATCH: lower anchor bars. Check your vehicle owner's manual to see which seating positions may be equipped with LATCH: lower anchor bars. Rigid LATCH connectors cannot be used with raised LATCH anchors in the vehicle seatback.



To install the base with rigid LATCH connectors, see page 17.



To remove rigid LATCH connectors from the vehicle anchors:

On one of the connectors, push in the end of the button with your thumb while slightly lifting the tab on the other end with your forefinger to slide the button and retract the connector back into the base. Repeat on the other side.

WARNING

DO NOT use both the rigid LATCH connectors and vehicle belt at the same time.

Safety Information

Review the following sections to learn about car seat safety and other important information.



1

Child Restraint Use

2

Vehicle Seating Position

3

Installation in Vehicle

4

Replacement and Expiration

5

Registration and Safety Notices

6

Aircraft Information

7

Warranty



WARNING

NEVER take your child out of the child restraint while the vehicle is moving.

NEVER leave your child unattended. Placing your child in a hot child restraint may result in burns.

DO NOT use a child restraint with damaged or missing parts.

DO NOT use a child restraint with cut, frayed, or damaged harnesses.

DO NOT substitute parts or try to modify the child restraint in any way. **DO NOT** lubricate buckles and fasteners.

DO NOT use any child restraint accessory except those approved by Dorel Juvenile Group.

NEVER allow any child to play with this child restraint; it is not a toy.

DO NOT remove or cover up any of the warning labels or other labels on the child restraint.

This child restraint has been certified for use in passenger vehicles. **DO NOT** use in a boat, on a motorcycle, or in a cargo van or bus where there are no seat belts or tether anchors.

When installing with a base, only use this car seat with a compatible Safety 1st Infant Car Seat Base.

Read all instructions for additional warnings.



WARNING



NEVER place a child rear-facing in a seating position with an active frontal air bag.

Check the vehicle owner's manual for more information about air bag/child restraint use.



Use the child restraint only on vehicle seats that face forward.



DO NOT use on seats that face the sides or rear of the vehicle.

For vehicles without a back seat, refer to your vehicle owner's manual.



According to accident statistics, children are safer when properly restrained in the rear seating positions than in the front seating positions.

Rear seating positions are statistically safer, whether you have air bags, advanced air bags, or no air bags at all.

If you are not sure where to place the car seat in your vehicle:

- Consult your vehicle owner's manual; **OR**
- Contact Dorel Juvenile Group Consumer Care Department; **OR**
- Visit your local Child Passenger Inspection Station. Go to <https://www.nhtsa.gov/vehicle-safety/car-seats-and-boosters-seats> to find your closest station.

To avoid your child being seriously burned, take the following precautions:

- Park in the shade or where the sun does not directly hit the car seat.
- Cover the car seat with a sheet or blanket when not in use.
- Check for hot seat and buckles before placing child in car seat.

To help protect your vehicle seat's upholstery from damage: You may use an accessory approved by Dorel Juvenile Group or a single layer towel underneath and behind car seat.

WARNING

Check the vehicle belt or rigid LATCH before each use. Use only if the belt can be tightened properly and locked securely in place.

Even when unoccupied, this child restraint **MUST** be firmly secured to the vehicle with the rigid LATCH or with the vehicle seat belt.

In a crash or sudden stop, an unsecured child restraint could injure occupants.



DO NOT risk your child's safety.

To keep your child as safe as possible, Dorel Juvenile Group strongly recommends replacing the car seat even after a minor crash, even if it was not occupied at the time.

Replacement After a Minor Crash

The National Highway Traffic Safety Administration states that for a crash to be considered minor **ALL of the following MUST be true:**

- Vehicle able to drive away from the crash site; **AND**
- Vehicle door nearest the car seat was not damaged; **AND**
- No passengers were injured; **AND**
- Airbags did not deploy; **AND**
- There is no visible damage to the car seat.

If the crash your car seat was involved in meets **ALL** the criteria, you may not need to replace the car seat.

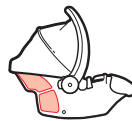
If one or more of these criteria are not true or if you are uncertain of any of your answers, replace the car seat immediately.

Replacement After a Moderate to Severe Crash

You **MUST** replace this car seat if it has been in a moderate to severe car crash.

This car seat is intended to protect a child in a single crash. During a crash, the car seat and all of its parts absorb crash energy which can deform or weaken it. Damage is not always visible. A damaged car seat **MUST** be replaced immediately.

Expiration



On the side of the car seat, there is a date of manufacture label as shown.

DO NOT use this car seat more than 8 years after the date of manufacture.

Please complete the postage-paid registration card that came with your child restraint, and send it to us.

Child restraints could be recalled for safety reasons.

You must register this restraint to be reached in a recall.

Send your name, address, email address if available, and the restraint's model number and manufacturing date to:

Dorel Juvenile Group

P.O. Box 2609
Columbus, IN 47202

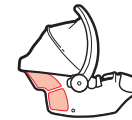
or call 1-800-544-1108 or register online at www.djgusa.com/registration/carseat/us.

For recall information, call the U.S. Government's Vehicle Safety Hotline at 1-888-327-4236 (TTY: 1-800-424-9153), or go to www.NHTSA.gov.



0515079		Tear Off and Mail This Part or Register Online		4348-0081D	
Consumer: Just fill in your name, address and email. Please print (use dark ink).					
Your Name					
Your Street Address					
City		State		Zip Code	
Email Address (optional)					
Model Number		Model Name		Manufacture Date	
AB123CDE		S1 CARSEAT		2024/05/01	
L#11 B265035					

Example of model number, manufacture date, and line code.



If you don't have the card or if your address changes, you will find the model number, manufacture date, and line code on the label located on the side of the car seat.

This restraint is certified for aircraft use when used with the internal harness.



Rear-Facing Aircraft Installation

Follow the steps for vehicle belt installation without the base on pages 35–39.

Install the car seat in a window seat to avoid blocking the aisle. If the aircraft lap belt is too short, ask the flight attendant for a belt extender.

Use only on forward-facing aircraft seats. Contact the airline for their specific policies.



Some airlines may ask to see a label stating that this car seat is certified for aircraft use. There is an airplane certification label located on the side of this car seat as shown.

Dorel Juvenile Group, Inc. (DJG) warrants this product to the original retail purchaser as follows:

This product is warranted against defective materials or workmanship for one year from the date of original purchase. **An original receipt is required to validate your warranty.** DJG will, at its option, provide replacement parts or replace this product. DJG reserves the right to substitute if the part or model has been discontinued.

To make a claim under this warranty, please contact our Consumer Care Department by phone: 1-800-544-1108 or text: 1-812-652-2525. Our hours of operation are from 8:00 a.m. to 6:00 p.m. EST Monday through Thursday and from 8:00 a.m. to 4:30 p.m. on Friday.

Proof of purchase is required and shipping charges are the responsibility of the consumer.

Warranty Limitations: This warranty does not include damages which arise from misuse or abuse of this product.

Limitation of Damages: The warranty and remedies as set forth are exclusive and in lieu of all others, oral or written, expressed or implied. In no event will DJG or the dealer selling this product be liable to you for any damages, including incidental or consequential damages, arising out of the use or inability to use this product.

Limitation of warranties and other warranty terms and state law rights: Any implied warranties, including implied warranties of the merchantability and fitness for a particular purpose, shall be limited to the duration and terms of the express written warranty. Some states do not allow limitations as to how long an implied warranty lasts or the exclusion or limitation of incidental or consequential damages, so the above limitations may not apply to you.

This warranty gives you specific legal rights, and you may have other rights, which vary from state to state. Neither DJG nor the dealer selling this product authorized any person to create for it any other warranty, obligation, or liability in connection with this product.