



**BARRIER-FREE VERSACOOLER® II**

**P8SBF, PSBF**

**Suggested Specification**

P8SBF shall deliver 8.0 gph of 50° F degree water at 90° F ambient and 80° F inlet water. Model P8SBF shall include P8AC and the VersaFiller Sports Bottle Filler with independent manual activation; unit must have front and side push pads to activate the manual flow of water for the cooler. VersaFiller alcove and activation button contain Freshield, WHICH UTILIZES a silver-based antimicrobial compound that reduces the growth of micro-organisms and mildew to protect the surfaces from discoloration, odors and degradation. Basin shall be designed to eliminate splashing and standing water. Bubbler shall be a Low Flow, one piece construction with flexible guard and operate between 20 and 120 PSI. VersaFiller cabinet finish is Brushed Stainless Steel. P8AC cabinet finish shall be Sandstone Powder Coated paint on galvanized steel or brushed stainless steel. Cooling system shall use R-134a refrigerant.

**Models**

- P8SBF** P8AC and PWSBF combination
- PSBF** PAC and PWSBF non refrigerated combination

**Standard Features**

- > Built-in 100 micron strainer stops particles before they enter the waterway
- > Waterways Are Lead-Free In Materials & Construction
- > Stainless Steel Top One Piece, Low Flow, Flexible Bubbler Guard
- > Heavy Duty Galvanized Steel Frame
- > High Efficiency Cooling Tank and Coil
- > Refrigerant R-134a
- > Four Push Pad Manual Activation on water cooler
- > External Stream Height Adjustment on cooler
- > Independent Mechanical Activation VersaFiller

**Finishes**

- > VersaFiller Cabinet Finish is Brushed Stainless Steel
- > Standard Versacooler (bottom unit) Cabinet Finish: Sandstone Powder Coated Paint on Galvanized Steel
- > Optional finishes (at additional cost): Brushed Stainless Steel

**Installation**

- > Prior to roughing consult with local, state, and federal codes for proper mounting height.
- > Shipped with complete instructions and wall mounting brackets.
- > Removable side and front panels provide easy access for installation



VersaFiller alcove is tall enough to accommodate most sizes of refillable water bottles on the market.

**Options (at additional cost)**

- 1 Piece chrome plated brass bubbler (036700-001)
- Oasis Water Filtration System

**Powder Coated Finish Warranty** (Continental limits of the United States and Canada): Three years on the powder coat finish provided that the water cooler has not been subjected to abuse, misuse, or alteration.

**Limited 5-Year Warranty** (Continental limits of the United States and Canada): Five years on the sealed refrigeration system and most component parts. Detailed warranty certificate enclosed with each water cooler; sample available upon request.

**Export Warranty:** One year on component parts. Detailed warranty certificate enclosed with each drinking fountain; sample copy available upon request.

Product Certified to NSF/ANSI Standard 61, Annex G (weighted average lead content of <=0.25%) and is in compliance with California's Health & Safety Code Section 116875 (commonly known as AB1953). Models covered by this specification comply with all known Plumbing Codes. Listed by Underwriters' Laboratories to U.S. and Canadian standards.

ADA Compliant when properly installed.

Components in this fountain are lead free as defined by the Safe Drinking Water Act Amendments of 1986, and the Lead Contamination Control Act of 1988.

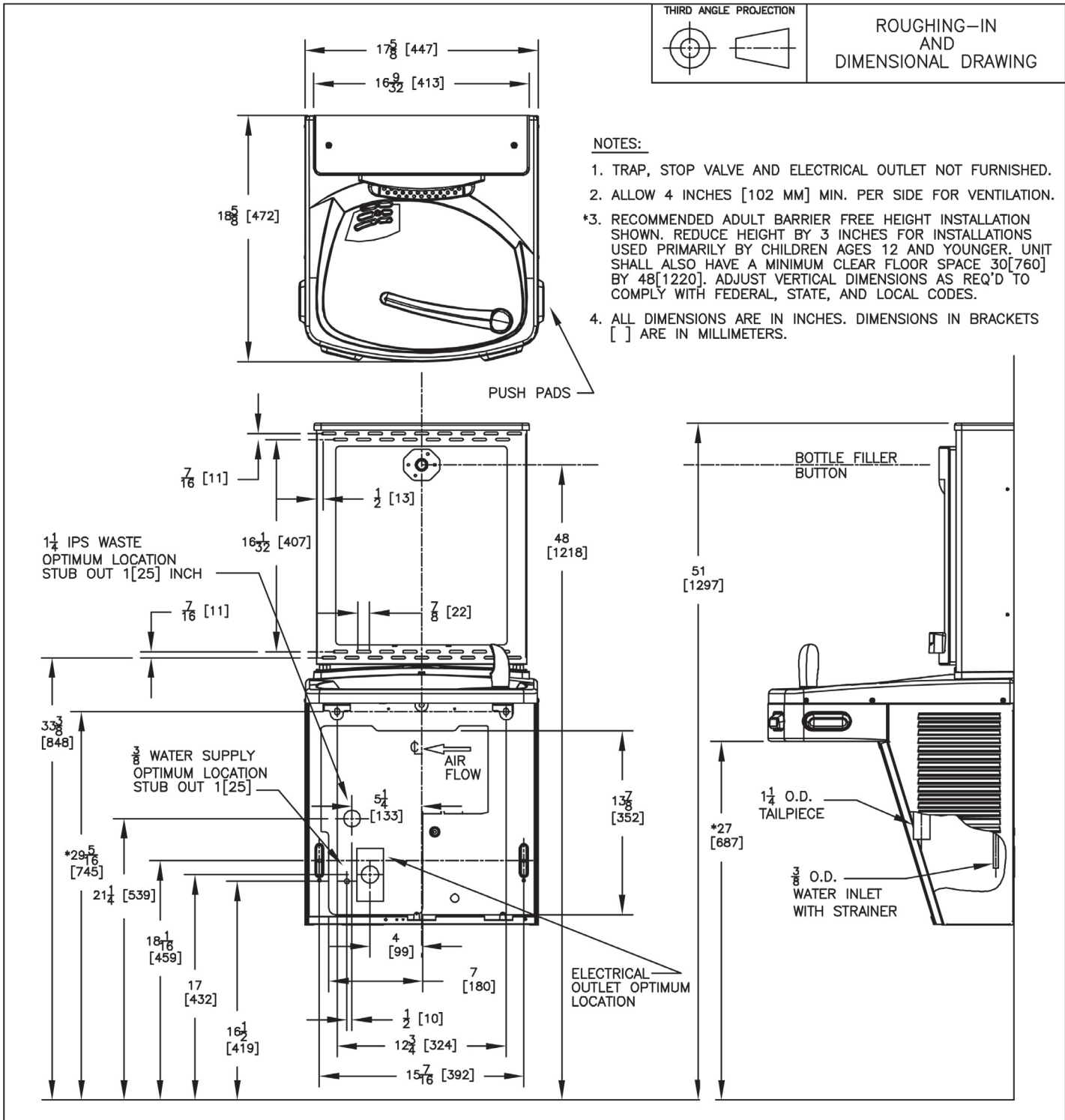


Model	50° F Drinking Water 90° F Ambient Air Temp*				115 Volts, 60 HZ			Glass Filler Acc. Option	Cabinet Color Finish	Net Wt. Approx.
	Rated Capacity GPH	Base Rate GPH	Pre-Cooler	Hot 'N Cold™ Model	Compr. HP	Full Load Amps	Rated Watts			
P8SBF	8.0	8.0	No	No	1/4	4.6	460	No	Yes	59 Lbs.

\* Industry Standard Rating Condition 80° F inlet water temperature. \*NSF Pending.

Specifications subject to change without notice

# OASIS® P8SBF: Versacooler®II Models PAC, P8AC with VersaFiller



## Available Oasis Versacooler® II Models with VersaFiller Combination

P8AC with VersaFiller.....P8SBF	PF8ACSL with VersaFiller .... PF8SBFSL	PGAC with VersaFiller..... PGSBF
P8ACSL with VersaFiller .....P8SBFSL	PV8AC with VersaFiller ..... PV8SBF	PGACSL with VersaFiller.... PGSBFSL
PG8AC with VersaFiller.....PG8SBF	PV8ACSL with VersaFiller.... PV8SBFSL	PFAC with VersaFiller..... PFSBF
PG8ACSL with VersaFiller....PG8SBFSL	PAC with VersaFiller ..... PSBF	PFACSL with VersaFiller .... PFSBFSL
PF8AC with VersaFiller.....PF8SBF	PACSL with VersaFiller..... PSBFSL	PVAC with VersaFiller..... PVSBF
		PVACSL with VersaFiller .... PVSBFSL

Models listed above are Sandstone powder coated paint on galvanized steel. Stainless steel models are available at extra cost.