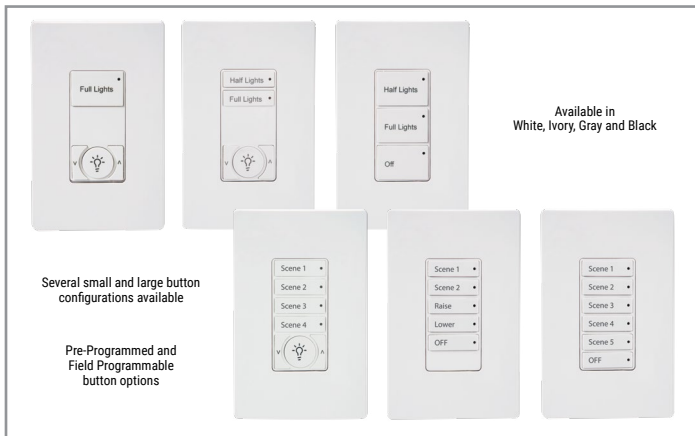


Project		Catalog #		Type	
Prepared by		Notes		Date	



WaveLinx Pro

Line Voltage Wallstation

Multi-scene, single area dimming wallstation which provides customized light level for each area

Typical Applications

Office • Education • Healthcare • Hospitality • Retail
Industrial • Manufacturing

Product Certification



- Meets latest ASHRAE Standard 90.1 requirements
- Meets latest IECC requirements
- Meets latest CEC Title 24 requirements

Product Features



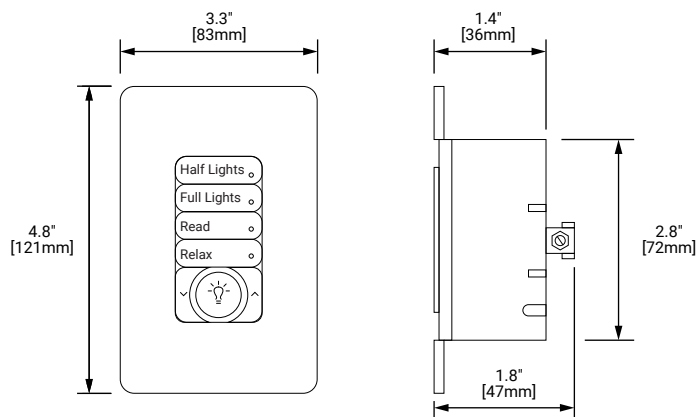
Interactive Menu

- Order Information pages 2 and 3
- Button Options pages 2 and 3
- Additional Resources page 6
- Connected Systems page 7
- Product Warranty

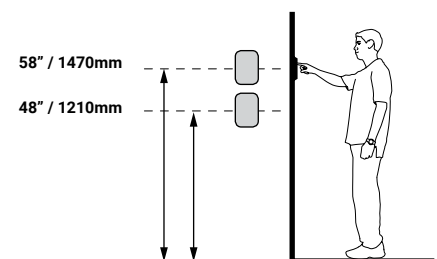
Top Product Features

- Multi-scene selection, raise/lower, toggle on/off for an area
- Suitable for standard single or multi-gang NEMA wall box
- Line voltage powered with no batteries to replace for simple new or retrofit installations
- Clean, elegant and simple control
- Configurable through software - no physical adjustments

Dimensional Details



Mounting Height



[additional product diagrams](#)

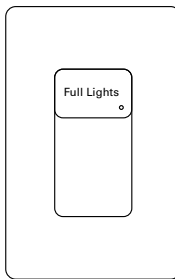
Order Information

The WaveLinX Pro wallstation is an accessory to the WaveLinX Pro connected lighting (WCL) system and requires a Wireless Area Controller (WAC) for full functionality. The wallstation is used to provide local and multi-level control in spaces and can be mapped to multiple zones in an area to create customizable light levels from simple control to architectural.

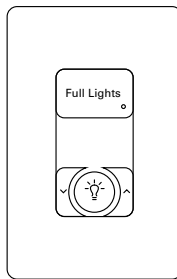
Catalog Number

Pre-Programmed Wallstations

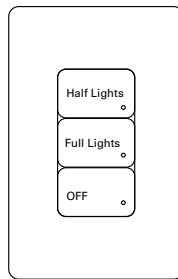
Catalog Number	Description	Color Options	Button Engraving
W1L -*	WaveLinX Pro, 1 Button large wallstation	*=W - White, V - Ivory, G - Gray, B - Black	BLANK = Standard Engraving ENGRV = Customer Specified Engraving
W1L-RL -*	WaveLinX Pro, 1 Button large (RAISE/LOWER) wallstation	*=W - White, V - Ivory, G - Gray, B - Black	
W2L -*	WaveLinX Pro, 2 Button large wallstation	*=W - White, V - Ivory, G - Gray, B - Black	
W2L-RL -*	WaveLinX Pro, 2 Button large (RAISE/LOWER) wallstation	*=W - White, V - Ivory, G - Gray, B - Black	
W3L -*	WaveLinX Pro, 3 Button large wallstation	*=W - White, V - Ivory, G - Gray, B - Black	
W2S -*	WaveLinX Pro, 2 Button small wallstation	*=W - White, V - Ivory, G - Gray, B - Black	
W2S-RL -*	WaveLinX Pro, 2 Button small (RAISE/LOWER) wallstation	*=W - White, V - Ivory, G - Gray, B - Black	
W4S -*	WaveLinX Pro, 4 Button small wallstation	*=W - White, V - Ivory, G - Gray, B - Black	
W4S-RL -*	WaveLinX Pro, 4 Button small (RAISE/LOWER) wallstation	*=W - White, V - Ivory, G - Gray, B - Black	
W5S -*	WaveLinX Pro, 5 Button small wallstation	*=W - White, V - Ivory, G - Gray, B - Black	
W6S -*	WaveLinX Pro, 6 Button small wallstation	*=W - White, V - Ivory, G - Gray, B - Black	
Notes	Notes		
Field Programmable models are standard engraving options that require field programming through the WaveLinX Pro Mobile Application.	All WaveLinX Pro Wallstations include standard engraving and color matching screwless single gang wallplates. For custom engraving use the configurator tool within the FlashPro tool.		



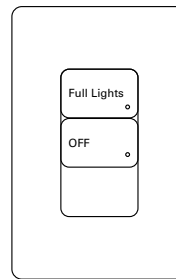
W1L-*
(* = W,V,G,B)



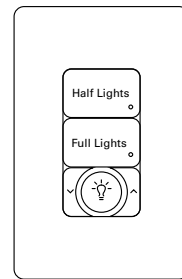
W1L-RL-*
(* = W,V,G,B)



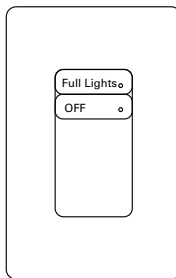
W3L-*
(* = W,V,G,B)



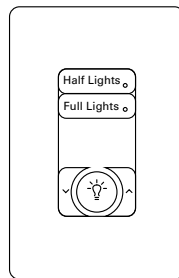
W2L-*
(* = W,V,G,B)



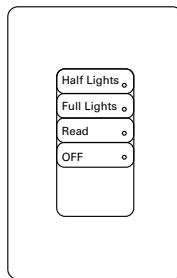
W2L-RL-*
(* = W,V,G,B)



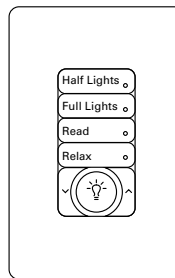
W2S-*
(* = W,V,G,B)



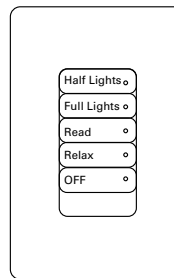
W2S-RL-*
(* = W,V,G,B)



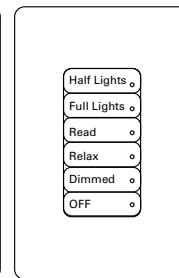
W4S-*
(* = W,V,G,B)



W4S-RL-*
(* = W,V,G,B)



W5S-*
(* = W,V,G,B)

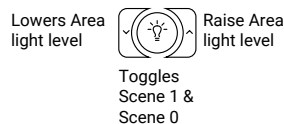


W6S-*
(* = W,V,G,B)

Default engraving & light levels

Half Lights	Scene 3 = 50%
Full Lights	Scene 1 = 100%
Read	Scene 2 = 70%
Relax	Scene 4 = 30%
Dimmed	Scene 5 = 10%
Night	Scene 6 = 1%
Off	Scene 0 = Off

ON/OFF Raise/Lower buttons



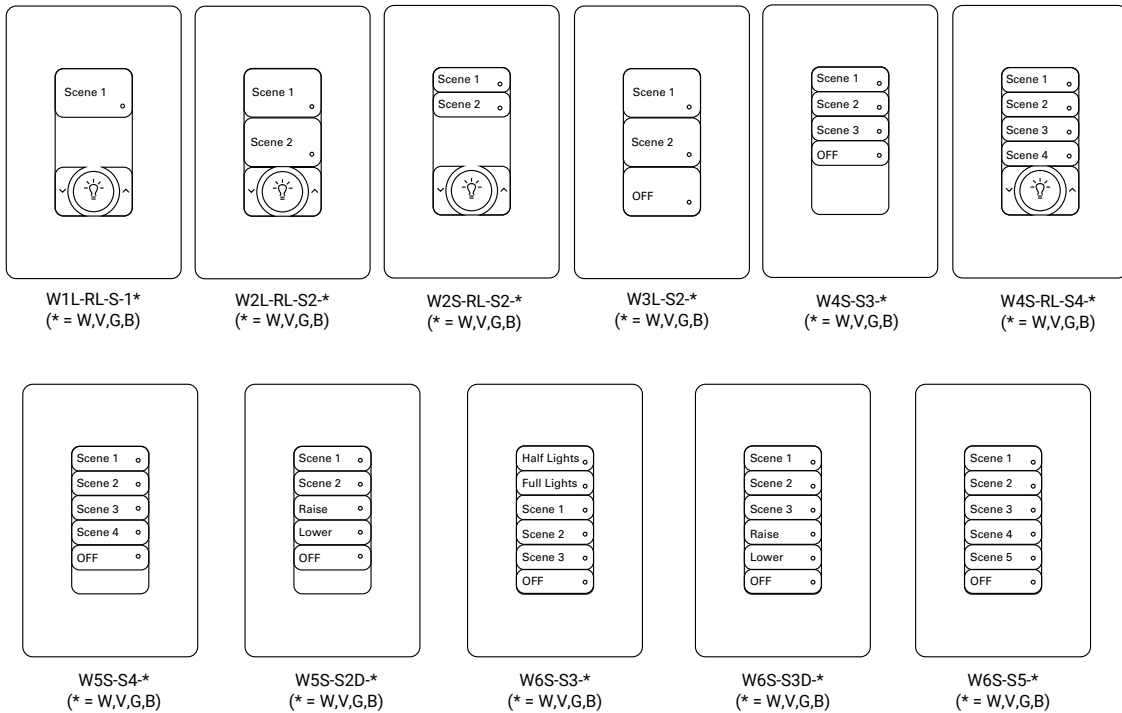
Button programming options via WaveLinX Mobile Application

- Scene Selection
- Scene Toggle
- Zone Toggle
- Zone Level
- Raise
- Lower
- HR Release
- No Action

Catalog Number

Field Programmable Wallstations

Catalog Number	Description	Color Options	Button Engraving
W1L-RL-S1-*	WaveLinx Pro, 1 Button large, field programmable (RAISE/LOWER) wallstation	*=W - White, V - Ivory, G - Gray, B - Black	BLANK = Standard Engraving ENGRV = Customer Specified Engraving
W2L-RL-S2-*	WaveLinx Pro, 2 Button large, field programmable (RAISE/LOWER) wallstation	*=W - White, V - Ivory, G - Gray, B - Black	
W2S-RL-S2-*	WaveLinx Pro, 2 Button small, field programmable (RAISE/LOWER) wallstation	*=W - White, V - Ivory, G - Gray, B - Black	
W3L-S2-*	WaveLinx Pro, 3 Button large, field programmable wallstation	*=W - White, V - Ivory, G - Gray, B - Black	
W4S-S3-*	WaveLinx Pro, 4 Button small, field programmable wallstation	*=W - White, V - Ivory, G - Gray, B - Black	
W4S-RL-S4-*	WaveLinx Pro, 4 Button small, field programmable (RAISE/LOWER) wallstation	*=W - White, V - Ivory, G - Gray, B - Black	
W5S-S4-*	WaveLinx Pro, 5 Button small, field programmable wallstation	*=W - White, V - Ivory, G - Gray, B - Black	
W5S-S2D-*	WaveLinx Pro, 5 Button small, field programmable (RAISE/LOWER) wallstation	*=W - White, V - Ivory, G - Gray, B - Black	
W6S-S3-*	WaveLinx Pro, 6 Button small, field programmable wallstation	*=W - White, V - Ivory, G - Gray, B - Black	
W6S-S3D-*	WaveLinx Pro, 6 Button small, field programmable (RAISE/LOWER) wallstation	*=W - White, V - Ivory, G - Gray, B - Black	
W6S-S5-*	WaveLinx Pro, 6 Button small, field programmable wallstation	*=W - White, V - Ivory, G - Gray, B - Black	
Notes	Notes		
Field Programmable models are standard engraving options that require field programming through the WaveLinx Pro Mobile Application.	All WaveLinx Pro Wallstations include standard engraving and color matching screwless single gang wallplates. For custom engraving use the configurator tool within the FlashPro tool.		



Button Kits

Catalog Number

Pre-Programmed Button Kit

Catalog Number	Description	Color Options	Button Engraving
W1L -BTS-*	WaveLinx Pro, 1 Button large wallstation - BUTTONS ONLY	*=W - White, V - Ivory, G - Gray, B - Black	BLANK = Standard Engraving ENGRV = Customer Specified Engraving
W1L-RL -BTS-*	WaveLinx Pro, 1 Button large (RAISE/LOWER) wallstation - BUTTONS ONLY	*=W - White, V - Ivory, G - Gray, B - Black	
W2L -BTS-*	WaveLinx Pro, 2 Button large wallstation - BUTTONS ONLY	*=W - White, V - Ivory, G - Gray, B - Black	
W2L-RL -BTS-*	WaveLinx Pro, 2 Button large (RAISE/LOWER) wallstation - BUTTONS ONLY	*=W - White, V - Ivory, G - Gray, B - Black	
W3L -BTS-*	WaveLinx Pro, 3 Button large wallstation - BUTTONS ONLY	*=W - White, V - Ivory, G - Gray, B - Black	
W2S -BTS-*	WaveLinx Pro, 2 Button small wallstation - BUTTONS ONLY	*=W - White, V - Ivory, G - Gray, B - Black	
W2S-RL -BTS-*	WaveLinx Pro, 2 Button small (RAISE/LOWER) wallstation - BUTTONS ONLY	*=W - White, V - Ivory, G - Gray, B - Black	
W4S -BTS-*	WaveLinx Pro, 4 Button small wallstation - BUTTONS ONLY	*=W - White, V - Ivory, G - Gray, B - Black	
W4S-RL -BTS-*	WaveLinx Pro, 4 Button small (RAISE/LOWER) wallstation - BUTTONS ONLY	*=W - White, V - Ivory, G - Gray, B - Black	
W5S -BTS-*	WaveLinx Pro, 5 Button small wallstation - BUTTONS ONLY	*=W - White, V - Ivory, G - Gray, B - Black	
W6S -BTS-*	WaveLinx Pro, 6 Button small wallstation - BUTTONS ONLY	*=W - White, V - Ivory, G - Gray, B - Black	
Notes Field Programmable models are standard engraving options that require field programming through the WaveLinx Pro Mobile Application.	Notes All WaveLinx Pro Wallstations include standard engraving and color matching screwless single gang wallplates. Buttons Only.		

Catalog Number

Field Programmable Button Kit

Catalog Number	Description	Color Options	Button Engraving
W1L -RL -S1-BTS-*	WaveLinx Pro, 1 Button large, field programmable (RAISE/LOWER) wallstation - BUTTONS ONLY	*=W - White, V - Ivory, G - Gray, B - Black	BLANK = Standard Engraving ENGRV = Customer Specified Engraving
W2L -RL -S2-BTS-*	WaveLinx Pro, 2 Button large, field programmable (RAISE/LOWER) wallstation - BUTTONS ONLY	*=W - White, V - Ivory, G - Gray, B - Black	
W2S -RL -S2-BTS-*	WaveLinx Pro, 2 Button small, field programmable (RAISE/LOWER) wallstation - BUTTONS ONLY	*=W - White, V - Ivory, G - Gray, B - Black	
W3L -S2-BTS-*	WaveLinx Pro, 3 Button large, field programmable wallstation - BUTTONS ONLY	*=W - White, V - Ivory, G - Gray, B - Black	
W4S -S3-BTS-*	WaveLinx Pro, 4 Button small, field programmable wallstation - BUTTONS ONLY	*=W - White, V - Ivory, G - Gray, B - Black	
W4S -RL -S4-BTS-*	WaveLinx Pro, 4 Button small, field programmable (RAISE/LOWER) wallstation - BUTTONS ONLY	*=W - White, V - Ivory, G - Gray, B - Black	
W5S -S4-BTS-*	WaveLinx Pro, 5 Button small, field programmable wallstation - BUTTONS ONLY	*=W - White, V - Ivory, G - Gray, B - Black	
W5S -S2D-BTS-*	WaveLinx Pro, 5 Button small, field programmable (RAISE/LOWER) wallstation - BUTTONS ONLY	*=W - White, V - Ivory, G - Gray, B - Black	
W6S -S3-BTS-*	WaveLinx Pro, 6 Button small, field programmable wallstation - BUTTONS ONLY	*=W - White, V - Ivory, G - Gray, B - Black	
W6S -S3D-BTS-*	WaveLinx Pro, 6 Button small, field programmable (RAISE/LOWER) wallstation - BUTTONS ONLY	*=W - White, V - Ivory, G - Gray, B - Black	
W6S -S5-BTS-*	WaveLinx Pro, 6 Button small, field programmable wallstation - BUTTONS ONLY	*=W - White, V - Ivory, G - Gray, B - Black	
Notes Field Programmable models are standard engraving options that require field programming through the WaveLinx Pro Mobile Application.	Notes All WaveLinx Pro Wallstations include standard engraving and color matching screwless single gang wallplates. Buttons Only.		

Required Accessories

All WaveLinx Pro connected lighting (WCL) system accessories require at least one WaveLinx Pro Wireless Area Controller (WAC2) for communications. Ensure the bill of material includes one of the following components.

Catalog Number

Catalog Number	Description
WAC2-POE	Wireless Area Controller G2, PoE powered
WAC2-120	Wireless Area Controller G2 with 120VAC to PoE Injector

Optional Accessories

For connection to 120VAC outlets.

Catalog Number

Catalog Number	Description
WPOE2-120	120VAC to PoE Injector

Product Specifications**Key Features**

- Easy installation and flexibility:
 - Multi-scene selection
 - Scene Raise/Lower
 - Toggle On/Off
- Suitable for standard single or multi-gang NEMA wall box with decorator style color match wallplates
- Mains powered for simple new or retrofit installations
- Clean, elegant, and simple way to control lighting on your project
- All settings are programmable through software, no physical adjustments necessary

Mechanical

Size: 4.75"H x 3.35"W x 1.85"D (121mm x 83mm x 47mm)

Environment:

- **Operating temperature:** 32°F to 113°F (0°C to 45°C)
- **Storage temperature:** 32°F to 167°F (0°C to 75°C)
- **Relative humidity operating:** 5% to 95% non-condensing
- For indoor use only

Mounting: Standard decorator opening

Color: White, Ivory, Gray and Black available

Electrical

Input power: 120-277VAC (neutral wire required)

Input current: 20mA (120V), 15mA (277V)

Hardware Specifications**Status Indicators:**

- Button LEDs - White (1 per scene button)
- LED functionality
 - Indication of wireless network join request
 - Indication of wireless network connection
 - Scene indication of operations

Button Configuration:

- Large buttons 1-3
- Small buttons 2,4,5,6

Software Specifications

- Each button programmable to trigger or toggle Scene or Zone
- Default values when joined to an area via WaveLinx Pro Mobile Application
- Models available with dominant button 50% light level
- Fade rates and scene transitions are programmable

Wireless Specifications

Radio: 2.4GHz

Standard: IEEE 802.15.4

Transmitter Power: + 7dBm

Configuration type: Router, End Point

Range: 150ft (50m) LOS through 2 interior walls of standard construction

Note - metal faceplates will reduce wireless range

System Performance

Maximum number of Devices: 200 per Wireless Area Controller (best practice 150 devices)

Standards/Ratings

- cULus Certified
- FCC Part 15
- Meets latest ASHRAE Standard 90.1 requirements
- Meets latest IECC requirements
- Meets latest CEC Title 24 requirements

Warranty

Five year warranty standard

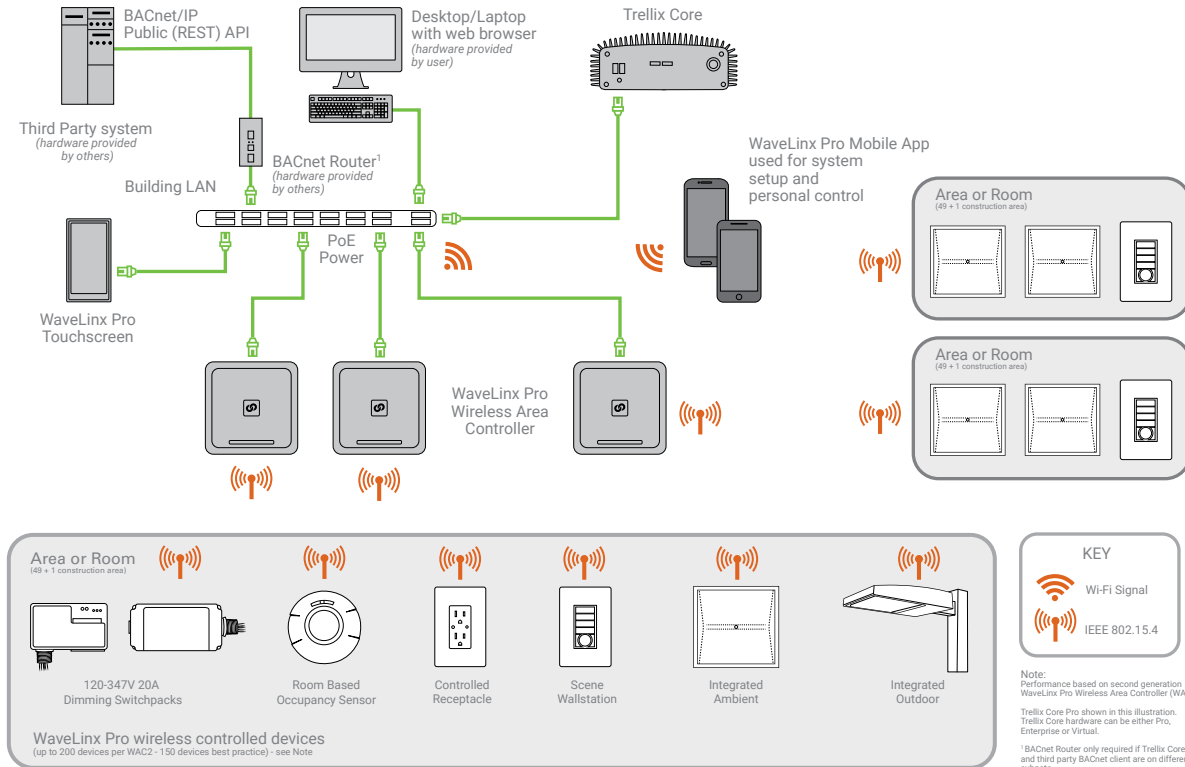
Note: Use of ammonia based or VOC cleaners on this device must be avoided. Prolonged use may cause loss of integrity and expose electrified components. If this occurs, turn OFF power to the unit and replace.



Download the WaveLinx Pro Mobile Application from either the Google Play or Apple Store®

System Architecture

This diagram shows the main components of the WaveLinX Pro connected lighting (WCL) system. The WCL system communicates using wireless mesh technology based on the 802.15.4 standard. A POE LAN connection for each Wireless Area Controller (WAC) is required for power and data access to the building wireless network. System setup is achieved through a simple mobile application via wireless communication to the system.



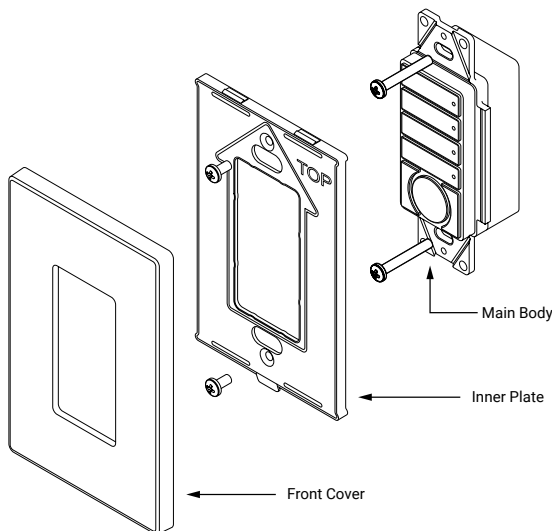
Overview

The wallstation is an integral part of the WaveLinX Connected Lighting System and is available in several small and large button configurations as well as various colors. These wallstations are mains powered and provide wireless control of the lighting in each area. The wallstations operate on a mesh wireless network based on IEEE 802.15.4 standards.

The wallstation mounts in a standard wallbox and includes a decorator style color matching wallplate. Each wallstation is fully configurable to provide local and multi-level control in each area. Each button is configured to control a lighting scene for an area and can be modified using the WaveLinX Pro Mobile Application.

The wallstation is a multi-scene, single area dimming wallstation which provides customized light level for each area. Some wallstation models provide default sequence of operations including 50% light level, scene light levels between 30-70% as well as 100% and full off. Many wallstation configurations also include scene raise/lower buttons to further adjust the light levels.

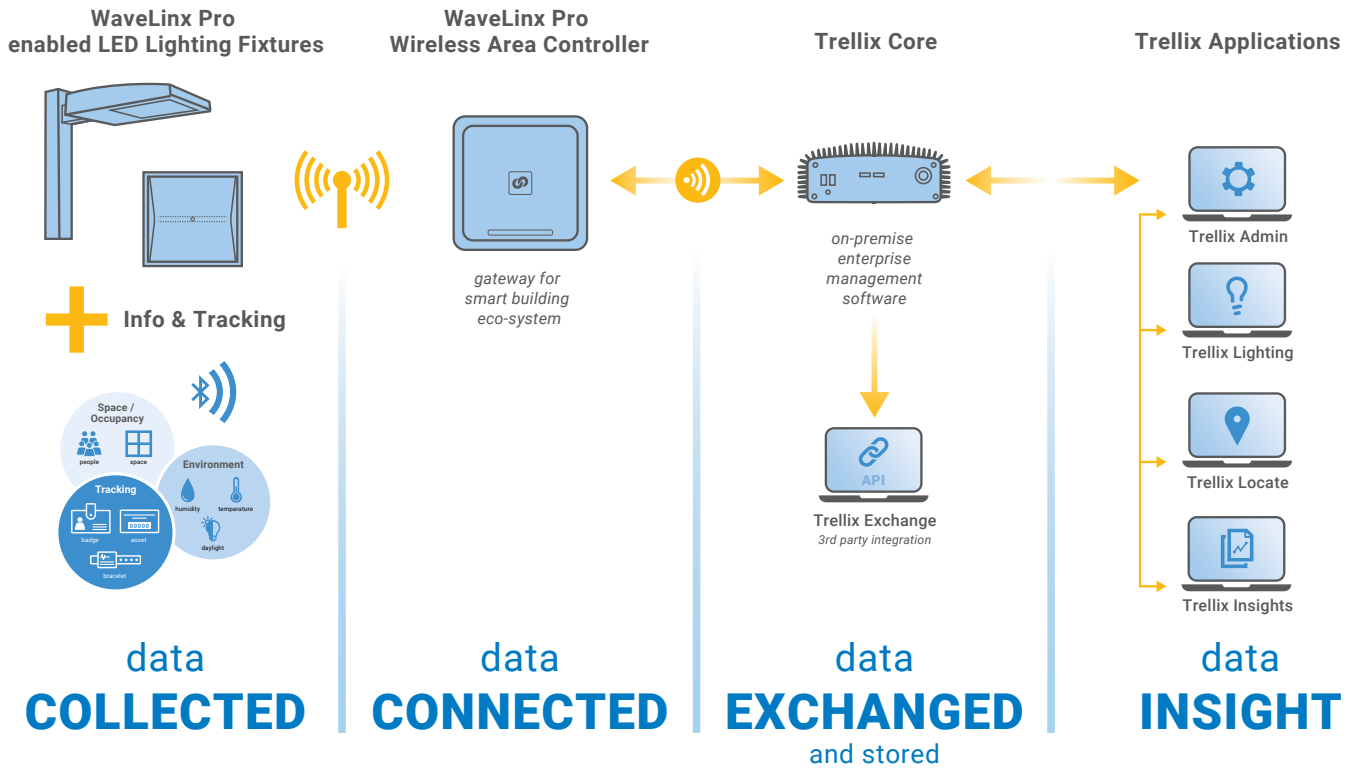
Installation



Better Data. Better Decisions.

Trellix combined with our WaveLinx Pro connected lighting system is a distributed network of LED lighting fixtures with integrated sensing and beacon technology that captures real-time data; making your facility smarter so you can make smarter decisions.

Trellix provides an open IoT platform and infrastructure that connects intelligent sensors leveraging the real-estate of the physical light fixture to solve higher complexity problems in a commercial building to deliver actionable insights through the aggregation of valuable data.



- Control Systems**
- Trellix
 - WaveLinx Pro wireless