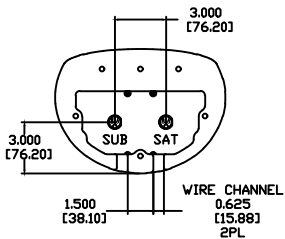
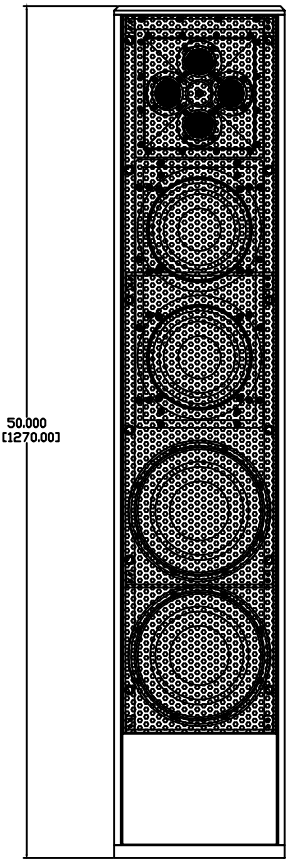
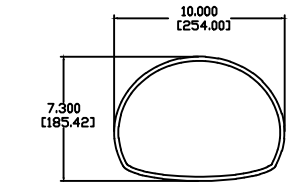
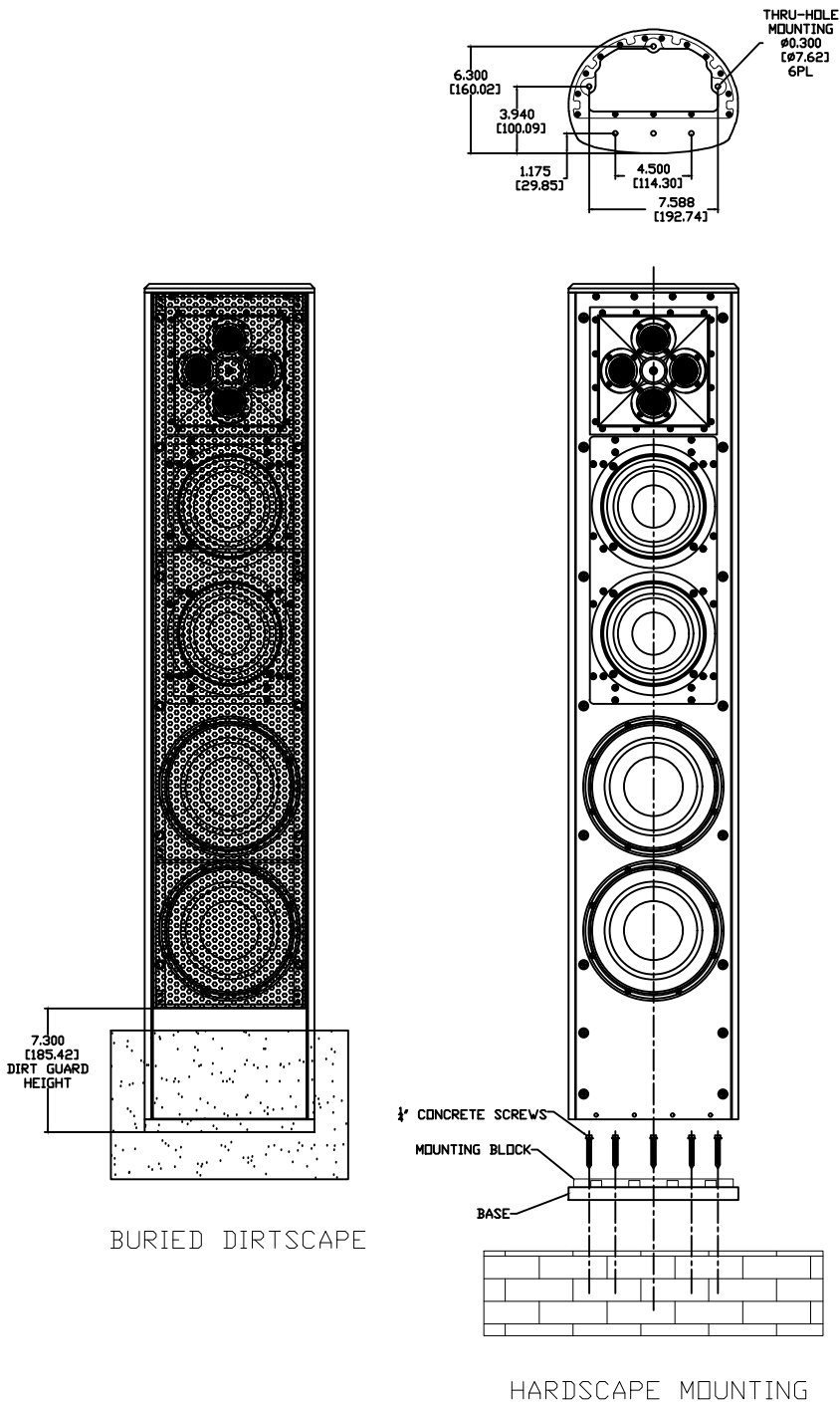
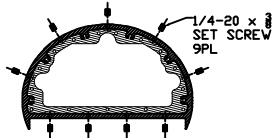


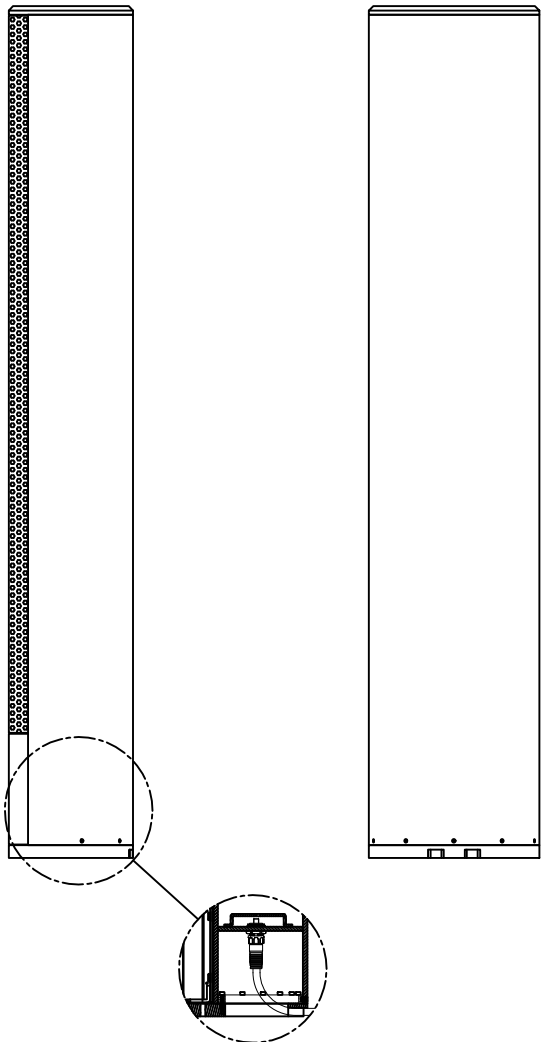
REVISIONS				
ECN	REV.	DESCRIPTION	DATE	APPROVED
	A	RELEASE FOR PRODUCTION	08-06-20	



#### BASE MOUNTING INSTRUCTIONS



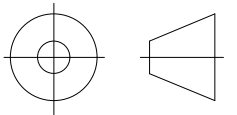
- 1) SLIDE CABINET OVER MOUNTING BLOCK OF BASE
- 2) LOOSELY TIGHTEN SET SCREWS WHILE MAKING SURE TO KEEP THE CABINET CENTERED ON THE BASE
- 3) TIGHTEN SCREWS IN A CRISS-CROSS PATTERN



#### NOTES:

1: MATERIAL - BOLLARD EXTRUSION (200227-S3A)  
UNLESS OTHERWISE SPECIFIED

2: FINISH - TBD



"THIRD ANGLE" PROJECTION

PROPRIETARY INFORMATION  
THE DESIGNS, INFORMATION, AND DATA CONTAINED HEREIN ARE PROPRIETARY AND ARE SUBMITTED IN CONFIDENCE, AND SHALL NOT BE DISCLOSED, USED OR DUPLICATED IN WHOLE OR IN PART, FOR ANY PURPOSES WHATSOEVER, WITHOUT THE PRIOR WRITTEN PERMISSION OF JAMES LOUDSPEAKER LLC, 2185 PARK PL, MINDEN, NV 89423. THIS LEGEND SHALL BE MARKED ON ANY REPRODUCTIONS HEREOF IN WHOLE OR IN PART. RECEIPT OF THIS DOCUMENT SHALL BE DEEMED TO BE AN ACCEPTANCE OF THE CONDITIONS SPECIFIED HEREIN.

JAMES LOUDSPEAKER

AT85QTi-BA-IM

EXTERNAL DIMENSIONS

P/N: -

DWR #: 200701-S101

REVISED BY:

DRAWN BY: S. LOESCH

DATE: 07-01-20

APPROVED:

DRAFTING APPROVED:

SCALE:

TOLERANCES: ANG: ± = .5° FRACT. ± = 1/32  
DECIMALS: .XX ± = .01 .XXX ± = .005

REVISION: A

SHEET 1 OF 17