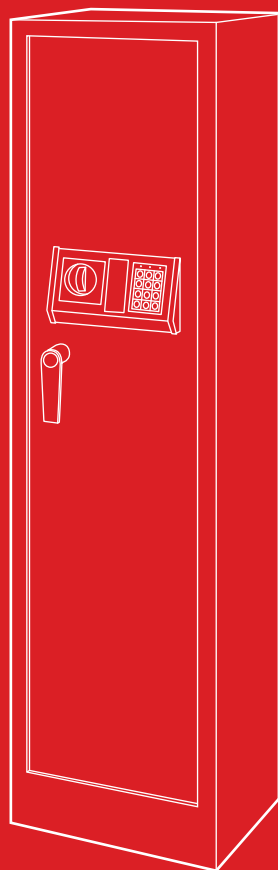




bestchoiceproducts



INSTRUCTION MANUAL

Large 5-Rifle Gun Safe



GUN SAFETY

Treat every weapon as if it were loaded.

Never point weapon at anything you do not intend to shoot.

Always keep the weapon's safety lock on until you intend to fire.

Keep finger pointed straight and off the trigger until you are ready to fire.

! NOTICE

- This is not a toy. Do not allow children to operate this item.
- This item is intended for indoor, household use only.
- Place item on a stable and level surface.
- Do not stand on or use any part of this product as a step ladder.
- Firmly secure all bolts, screws and knobs before use.
- Reconfirm that all bolts, screws, and knobs are secure every 90 days.
- Be aware that some parts are heavy and have sharp edges.
- This appliance is not intended for use by persons (including children) with reduced physical, sensory or mental capabilities, or lack of experience and knowledge, unless they have been given supervision or instruction concerning use of the appliance by a person responsible for their safety.
- If any parts are missing, broken, damaged, or worn, stop using this product until repairs are made and/or factory replacement parts are installed.
- Do not use this item in a way inconsistent with the manufacturer's instructions as this could void the product warranty.

TOOLS REQUIRED



SOCKET
WRENCH



DRILL



HAMMER



8 AA BATTERIES
(4 PROVIDED)

HARDWARE

1

M6 x 32mm
SLEEVE
ANCHOR

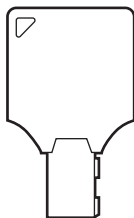


4 PCS

PARTS

A

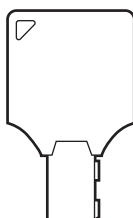
OVERRIDE KEY



2 PCS

B

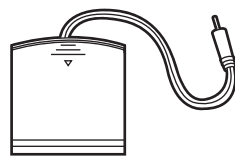
COMPARTMENT KEY



2 PCS

C

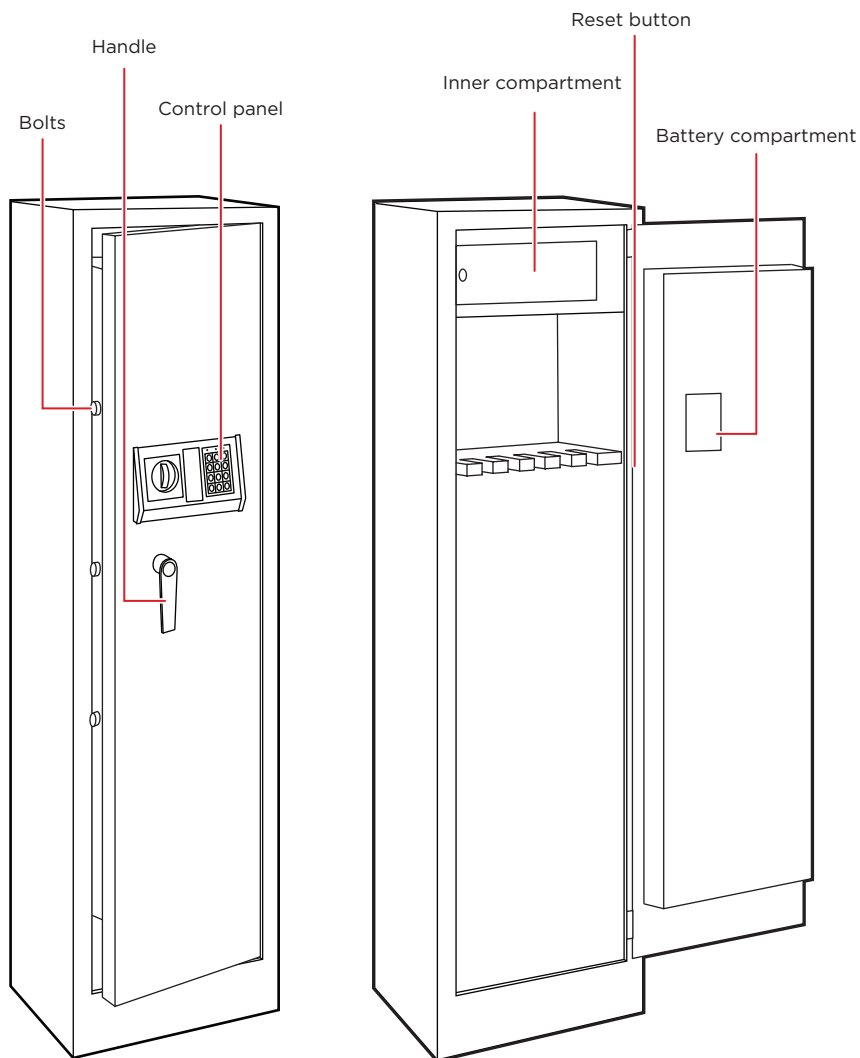
BATTERY BOX



1 PC

DIAGRAM

Please retain these instructions for future reference.

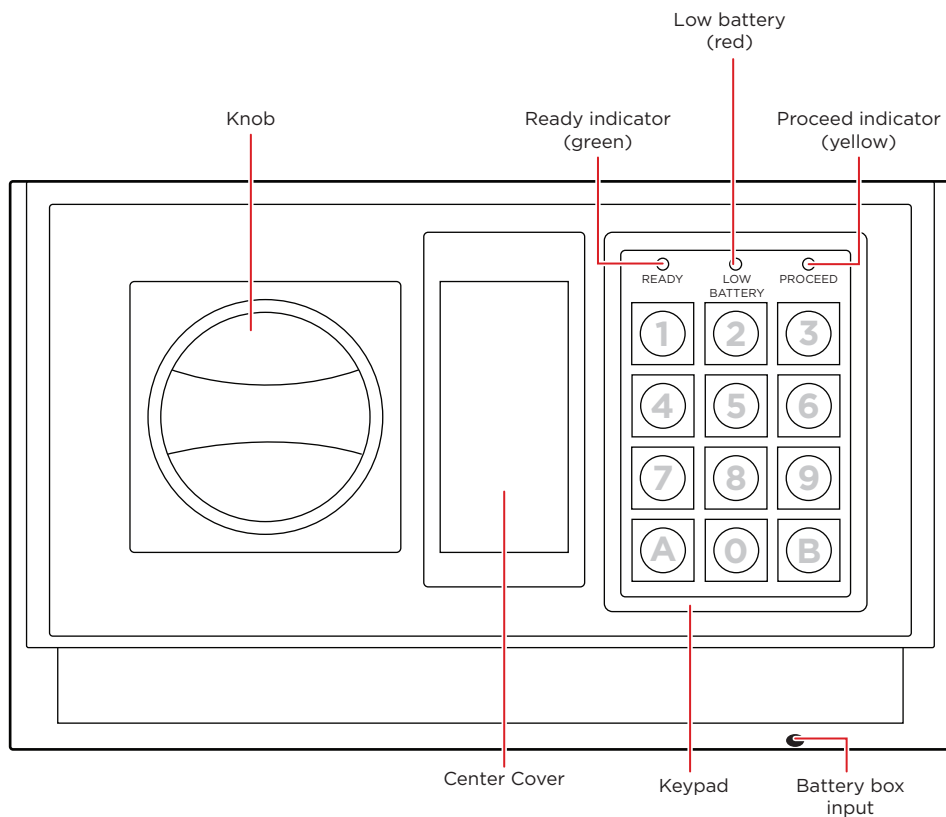


Inner compartment: Open with part B compartment key

Reset button: Press to program a code

Battery compartment: Install 4 AA batteries

CONTROL PANEL



Low battery (red): Immediately replace batteries if low battery light turns on

OPERATING INSTRUCTIONS

Note: The preset code is **159**

1. Input code and press the B button.
2. If code is correct, the safe will beep twice and the ready light (green) will turn on. If incorrect, the yellow light will flash.

Note: If three incorrect attempts are made, keypad will lock for 20 seconds.

3. Within 5 seconds, turn the knob and handle clockwise to open the door.
4. When finished, turn the handle counterclockwise to close the door, then turn the knob counterclockwise to lock.

Programming new code:

1. With the safe open, press the red reset button behind the door. The safe will beep twice and the yellow light will turn on.
2. Input a code (1 to 8 digits long) and press the B button.
3. The safe will beep twice to confirm the new code.

Battery Box:

If the keypad is depleted of power, use the battery box to power the keypad.

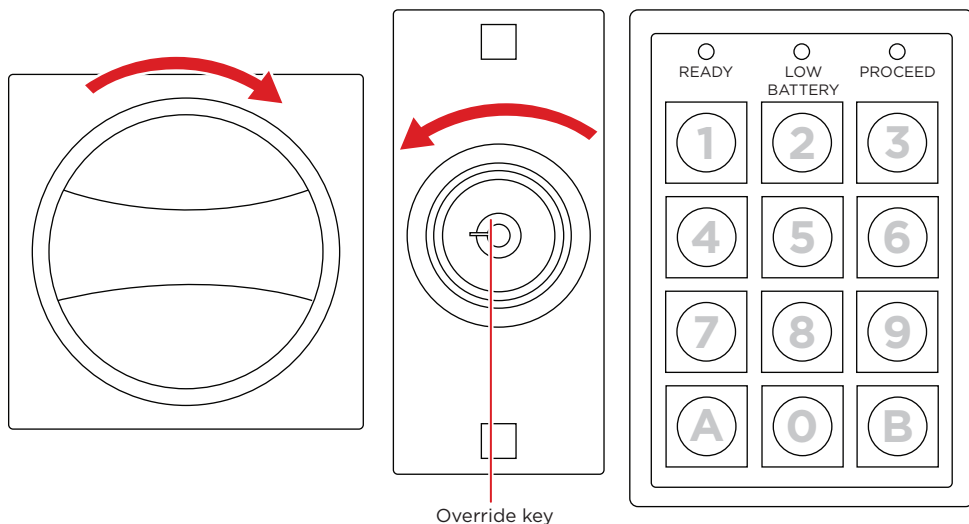
1. Install 4 AA batteries into the battery box.
2. Insert the plug into the input on the bottom of the control panel.
3. Input code and open safe.

Override key:

1. Remove the center cover from the control panel.
2. Insert a part A override key and turn it counterclockwise.

While holding the key in position, turn the knob clockwise to unlock, then turn the handle clockwise to open the door.

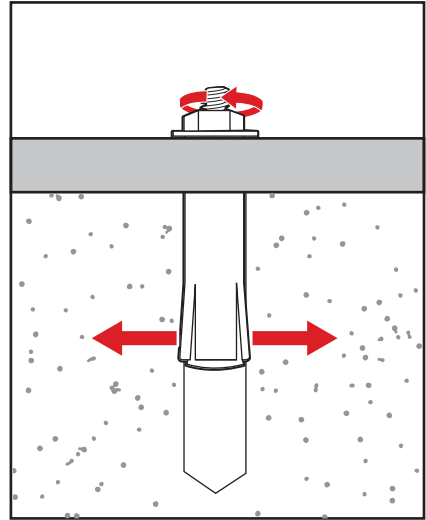
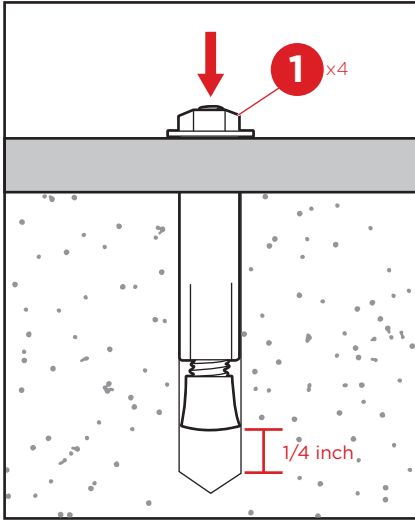
Note: Do not store keys inside the safe.



SECURING SAFE

To secure the safe, use four part 1 sleeve anchors to attach the safe to the wall or floor.

1. Drill four holes into the wall/floor.
 - Drill approximately a $\frac{1}{4}$ " deeper than the length of the sleeve anchor.
2. Insert four sleeve anchors into the holes.
 - Use a hammer if necessary.
3. Tighten the nuts to secure the sleeve anchors in the wall/floor.





HELP CENTER



Question about your product? We're here to help. Visit us at:

help.bestchoiceproducts.com



Chat Support



Product Inquiry



Orders FAQ



Product Assembly



Returns & Refunds

PRODUCT WARRANTY INFORMATION

All items can be returned for any reason within 60 days of the receipt and will receive a full refund as long as the item is returned in its original product packaging and all accessories from its original shipment are included. All returned items will receive a full refund back to the original payment method. All returned items will not be charged a re-stocking fee.

All returned items require an RA (Return Authorization) number, which can only be provided by a Best Choice Products Customer Service Representative when the return request is submitted. Items received without an RA may not be accepted or may increase your return processing time. Once an item has been received by Best Choice Products, refunds or replacements will be processed within 5 business days.

All returns must be shipped back to the Best Choice Products Return Center at the customer's expense. If the reason for return is a result of an error by Best Choice Products then Best Choice Products will provide a pre-paid shipping label via email. Boxes for return shipping will not be provided by Best Choice Products, and is the customer's responsibility to either use the original shipping boxes or purchase new boxes.

Pictures may be required for some returns to ensure an item is not damaged prior to its return. Items returned are not considered undamaged until they are received by Best Choice Products and verified as such. All damages to items are the customer's responsibility until the item has been received by and acknowledge by Best Choice Products as undamaged.



WARNING

Manufacturer and seller expressly disclaim any and all liability for personal injury, property damage or loss, whether direct, indirect, or incidental, resulting from the incorrect attachment, improper use, inadequate maintenance, or neglect of this product.