

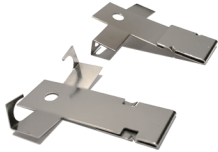


To prevent death, injury or damage to property, this product must be installed in accordance to National Electrical Code (NFPA70) in the US or Canadian Electrical Code (CSA 22.1) in Canada.

Disconnect power before installing the product or servicing it.

Wait until fixture has cooled down before installing or servicing the fixture.

Components required for installation



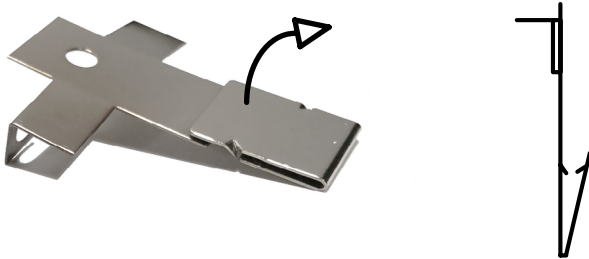
Two (2) Mounting Clips

Tools Needed

None

Installation

1. Separate the base of the clip far enough to fit over the sheet metal of the housing.



2. Using your hands press the clip up onto the bottom lip of the housing until it is fully seated (a tool may be used here to aid pressing)



3. Repeat the process with the second clip, positioned 180° (on the opposite side) from the first clip.