

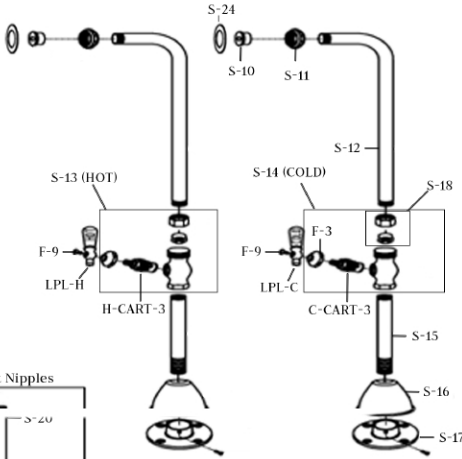


MAIDSTONE

www.MaidstoneSupply.com

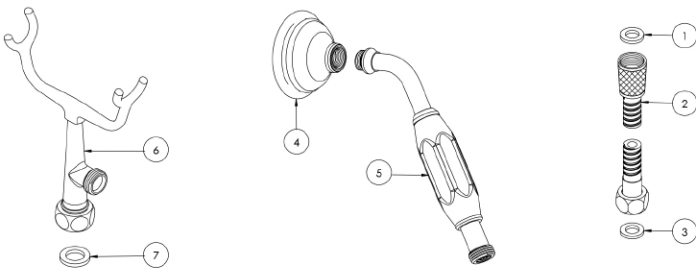
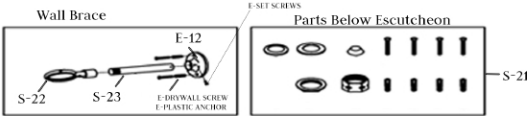
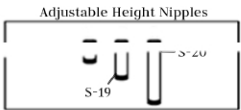
Freestanding Downspout Clawfoot Bathtub Faucet with Handshower

Part No: 121-DSF4



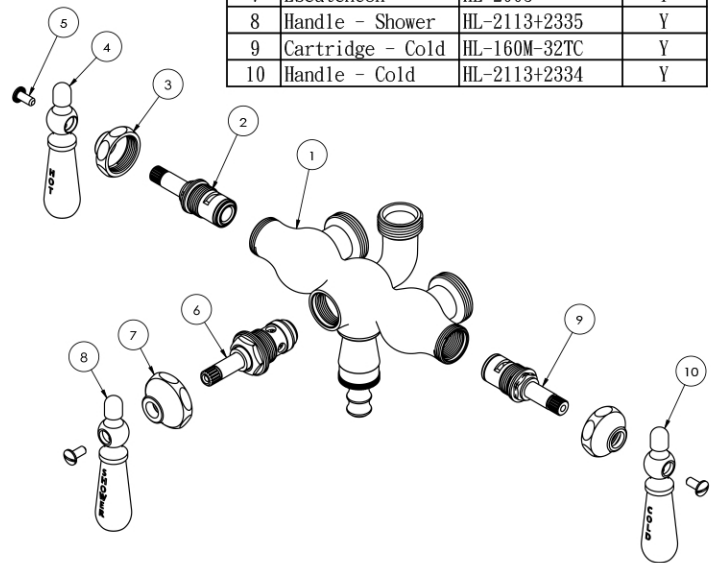
Unpack and check all the parts, and read the instructions.

ITEM	DESCRIPTION	QTY
C-CART-3	COLD STEM	1
H-CART-3	HOT STEM	1
E-12	FLANGE	2
E-DRYWALL SCREW	DRYWALL SCREW	4
E-PLASTIC ANCHOR	PLASTIC ANCHOR	4
E-SET SCREWS	SCREW (FINISHED)	4
F-3	BELL NUT	2
F-9	SCREW	2
LPL-C	COLD HANDLE	1
LPL-H	HOT HANDLE	1
RMN3	3" NIPPLE	2
S-10	THREADED CONNECTOR	2
S-11	NUT	2
S-12	SHORT THROW TUBE	2
S-15	7.5" NIPPLE	2
S-16	ESCUTCHEON	2
S-17	FLANGE	2
S-18	NUT WITH FLANGE	2
S-19	6" NIPPLE	2
S-20	9" NIPPLE	2
S-21	HARDWARE BAG	1
S-22	LOOP INCLUDES E-SET SCREWS	2
S-23	12" TUBE	2
S-24	WASHER	2



No.	Part Name	Part No.	FINISH
1	Washer	HL-5002-1	
2	Hose	HL-5002	Y
3	Washer	HL-5002-1	
4	Shower head	HL-3710	Y
5	Hand held	HL-4364+5702	Y
6	Cradle	HLP-01441	Y
7	Washer	HL-1830	

No.	Part Name	Part No.	FINISH
1	Faucet body	HLP-0154-BD	Y
2	Cartridge - Hot	HL-160M-32TH	Y
3	Escutcheon	HL-2014	Y
4	Handle - Hot	HL-2113+2333	Y
5	Screw	HL-1414	Y
6	Diverter	HL-1714+1611	Y
7	Escutcheon	HL-2003	Y
8	Handle - Shower	HL-2113+2335	Y
9	Cartridge - Cold	HL-160M-32TC	Y
10	Handle - Cold	HL-2113+2334	Y



Contact Maidstone for additional information and specifications. For complete warranty information and a list of dealers visit www.MaidstoneSupply.com. All products and specifications are subject to change without notice. Maidstone is not responsible for typographical and/or dimensional errors. Typographical errors are subject to correction.

Note: Rough-in dimensions may vary +/- 1/2" and are subject to change. No responsibility is assumed by Maidstone.