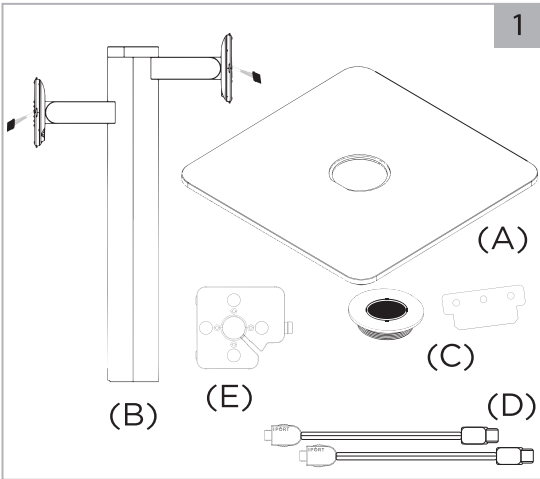


# I PORT CONNECT

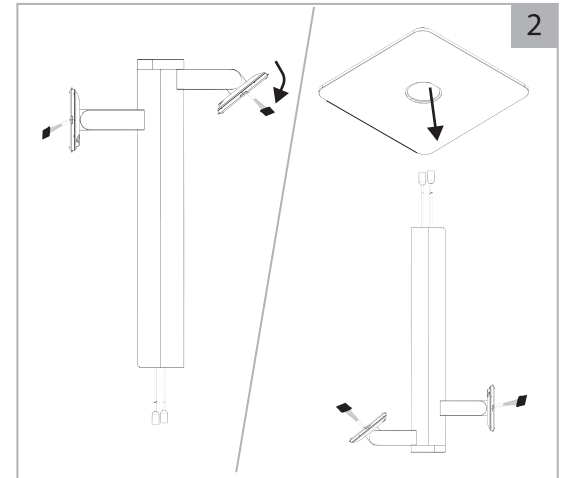
## CONNECT Pillar Install (72434 and 72435)



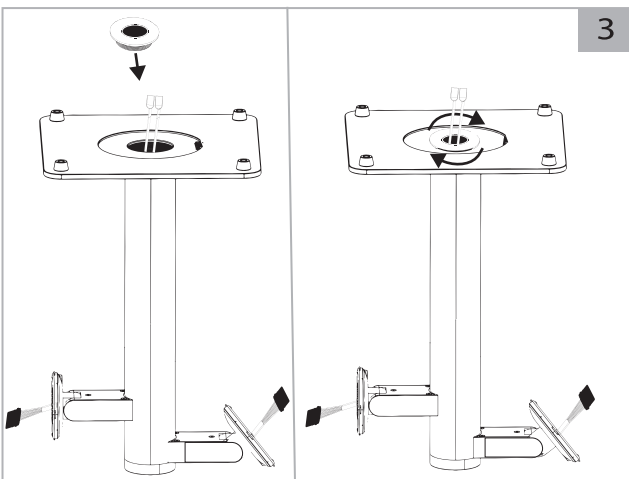
Remove from the box...

- (A) Pillar Base
- (B) Pillar One or Two Mount
- (C) Mounting Nut and Key and screws
- (D) H10 to USB-C Cable(s)
- (E) Case Mounting plate(s)

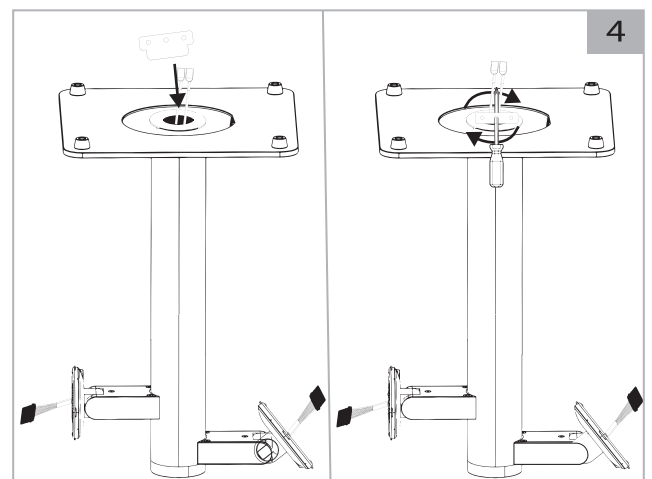
**Note:** 1 or 2 Apple USB-C 15W power adapters provided with the iPads are required to power the Pillar depending on pillar sku



Rotate the top Mount head temporarily downward and flip the Pillar upside down to stand on its flat top. Feed the cables through the hole in the plate and rest the plate on the Pillar aligning the notch between the two parts.

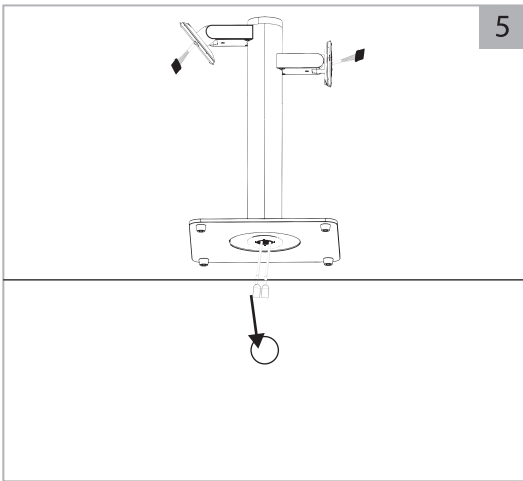


While holding the baseplate in place, feed the cables through the mounting nut. Spin the mounting nut clockwise into the pillar until it is tight.

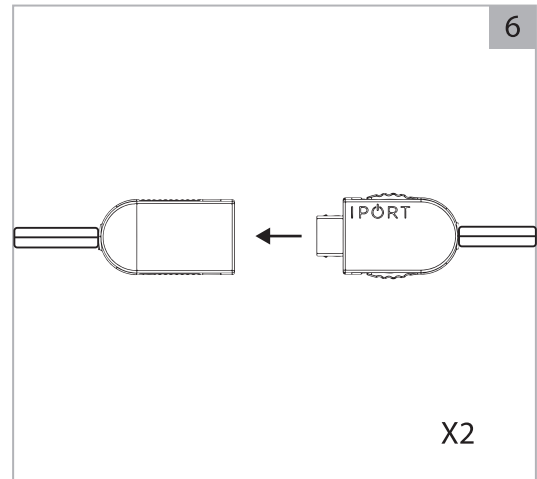


Insert the provided key wrench into the mounting nut slots and tighten by hand. Insert a screwdriver into one of the holes in the wrench to use extra leverage in tightening the nut.

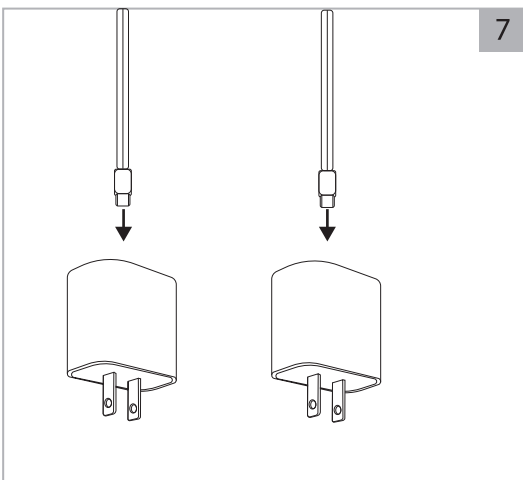
# I PORT CONNECT



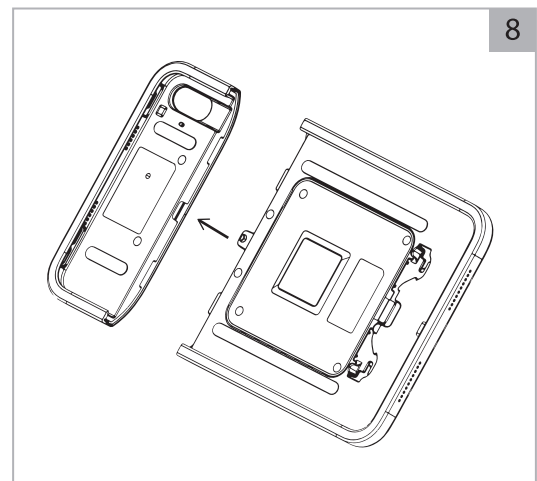
Feed the exposed wires through a hole in the table where the pillar will be installed or out the back of the pillar depending on your install requirements.



Attach the H10 Connector with the USB-C into the female H10 Connector on the Pillar System. Repeat for both connectors.

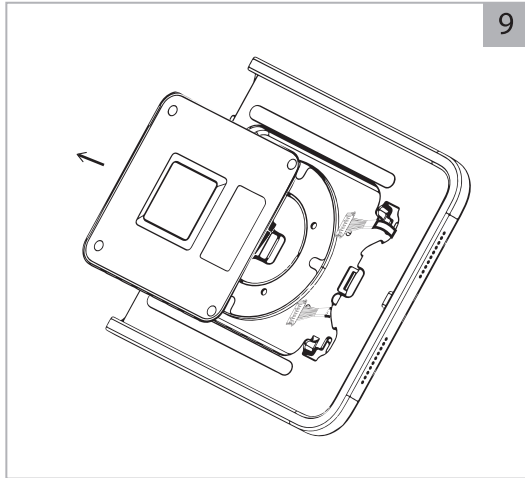


Plug in the USB-C cable into the Apple power supply provided with each iPad and plug the power adapter into the wall.

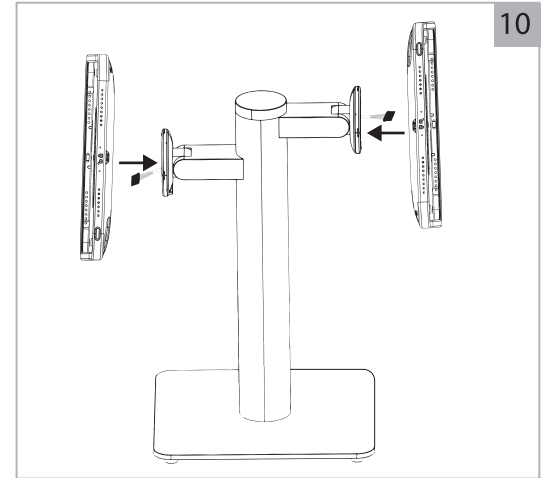


Remove the Sleeve Top From the CONNECT Case.

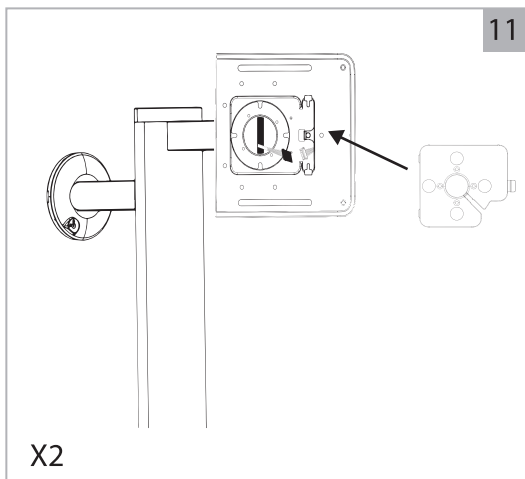
# I PORT CONNECT



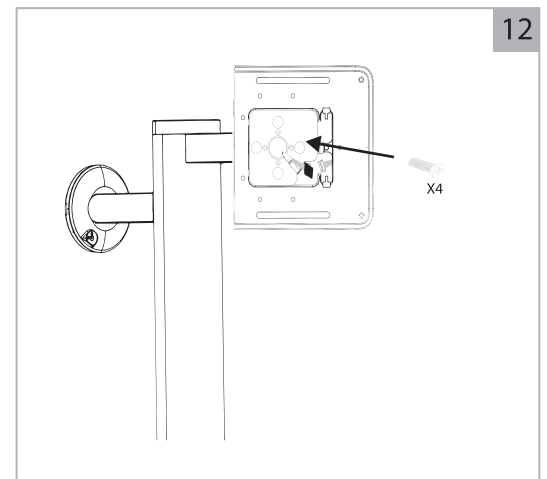
Remove the Electronics Cover from the inside of the Case.



Place one or both Cases onto the Pillar head make sure to feed the cable through the center of the Case.



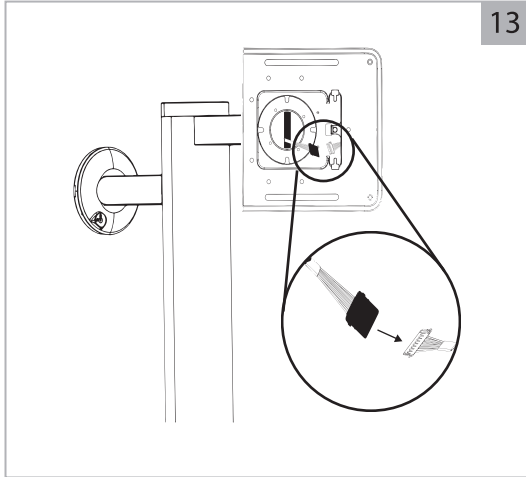
Insert the Case mounting plate into the case and over top of the Molex cable. Repeat this step for a second iPad.



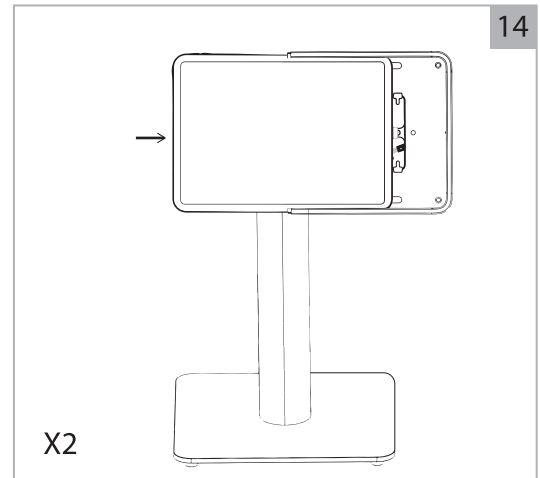
Insert the 4ea provided philips head screws into the Case mounting plate and tighten snug ensuring the case is secure to the pillar head.

# I PORT CONNECT

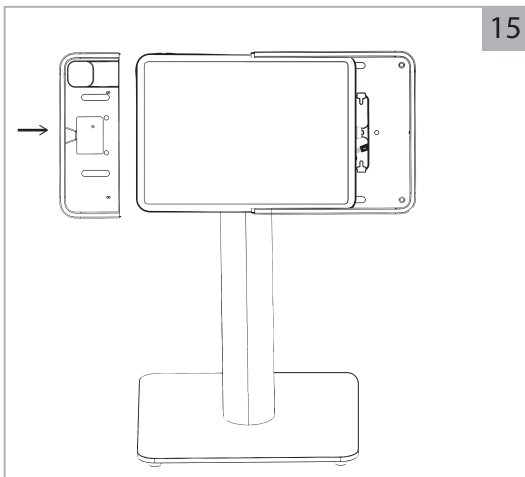
---



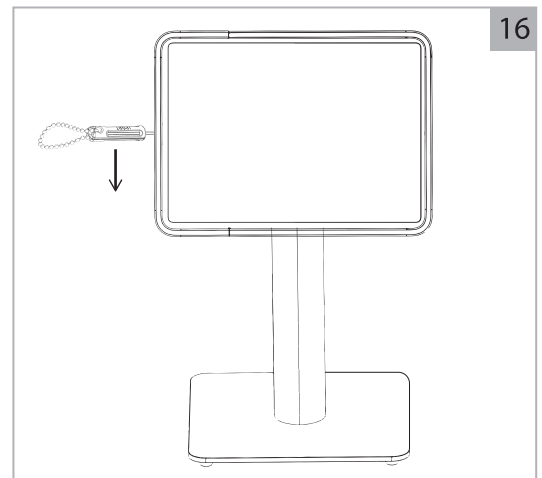
Insert the male Case Molex cable into the female Pillar Molex connector and ensure the retention cover is secured.



Insert the iPad into the Case ensuring the iPad is seated fully into the bottom of the Case and the USB-C connection.



Reinstall the Case Top onto the iPad and Case making sure to fully snap the Case Top in place.



Insert the provided IPORT Security tool into top of the Case and slide towards the lock position securely locking the iPad into the Case.