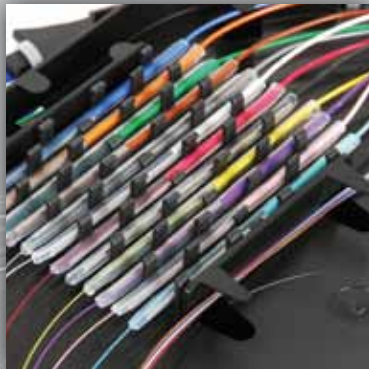


## CCH FIBER OPTIC HARDWARE

*features and benefits*



*To innovate,  
sometimes you have to*

**THINK  
INSIDE  
THE BOX**



Corning Cable Systems worked with customers to develop our most feature-rich, intuitive fiber optic hardware. The CCH Hardware Family anticipates virtually every customer challenge and addresses it, making termination and management of your fiber optic connectivity faster, easier and more intuitive.

**CORNING**  
LANscape®  
Solutions



# CCH-01U (and CCH-02U, 03U)

Accepts standard CCH panels

Slotted mounting brackets



Sliding tray

Molded finger jumper guides



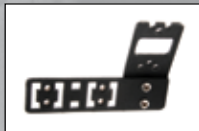
Segmented fiber routing guides

See-through polycarbonate removable top covers



Dust cap storage

See-through polycarbonate door



Angled external strain-relief bracket



Room to splice inside



Intermediate strain relief



Molded-in routing illustrations



Adaptable internal strain relief



Multiple label options

Nationwide Availability

## Features

- The external and internal strain-relief brackets create flexibility for cable attachment
- The internal strain relief can be moved to accommodate cable entry from either side of the housing
- Slotted mounting brackets seat the housing in the rack for one-person installation
- Intermediate strain relief secures transition from subunits or buffer tubes to 900 μm fiber and allows easy access to individual units during troubleshooting
- The see-through door allows instant visibility for inspection and troubleshooting without disturbing the housing
- See-through and removable top covers make it easier to work inside the housing
- The CCH-01U's shelf slides out front or rear, for easy access to connections even in the top of the rack
- Sliding tray's bathtub design protects fibers from being pinched when tray moves
- The floor of the housing has molded-in illustrations for proper fiber routing regardless of installer skill level
- Segmented routing guides keep fiber bundles segregated, and can be reconfigured to meet routing needs
- Jumper guides have molded fingers that protect jumpers from macrobending
- Splice within the housings using compact, easy-to-use splice cassettes
- Multiple port labeling locations are available at the front of the housing, with downloadable label templates available
- Like all LANscape® Solutions hardware, the CCH Hardware family accepts the CCH panels you already use today for universal fit
- In stock in the largest fiber optic distribution inventory in North America

CORNING



# CCH-04U



Slack storage on rear door

Snap-in external strain-relief bracket



Tool-less, removable rear cover

Separable rear housing



Removable front enclosure

Slotted mounting brackets

Accepts standard CCH panels



Multiple label options



Adaptable internal strain relief



Room to splice inside (288 F capacity)



Segmented fiber routing guides

Molded jumper opening

Platinum-painted interior

Tapered jumper routing guides

Removable, see-through polycarbonate door

Nationwide Availability

## Features

- Snap-on external and internal strain-relief brackets allows you to strain relieve the cables before attaching to the housing in-rack
- Slotted mounting brackets allows a single person to seat the housing in the rack for installation
- The internal strain relief can be moved to accommodate cable entry from either side of the housing
- The top cover removes without tools, making it easier to work inside
- The separable rear housing allows you to work in the housing on a separate work surface prior to installation
- The interior is painted platinum, reflecting ambient light for better visibility in the housing
- The see-through door allows instant visibility for inspection and troubleshooting without disturbing the housing
- Segmented routing guides keep fiber bundles segregated, and can be reconfigured to meet routing needs
- The rear door is designed to secure slack cable within the housing
- The removable front enclosure allows unimpeded access to the connectors
- Snap-in jumper guides allow for more flexibility of jumper management, and are tapered to maximize visibility to ports
- Molded jumper opening reduces dust ingress, while maintaining the jumper bend radius
- Multiple port labeling locations are available within the housing, with downloadable label templates
- Splice within the housings using easy-to-use splice cassettes
- Like all LANscape® Solutions hardware, the CCH Hardware family accepts the CCH panels you already use today for universal fit
- In stock in the largest fiber optic distribution inventory in North America

CORNING



## Splice Cassettes (CCH-CS) Slack Cassettes (CCH-CF)



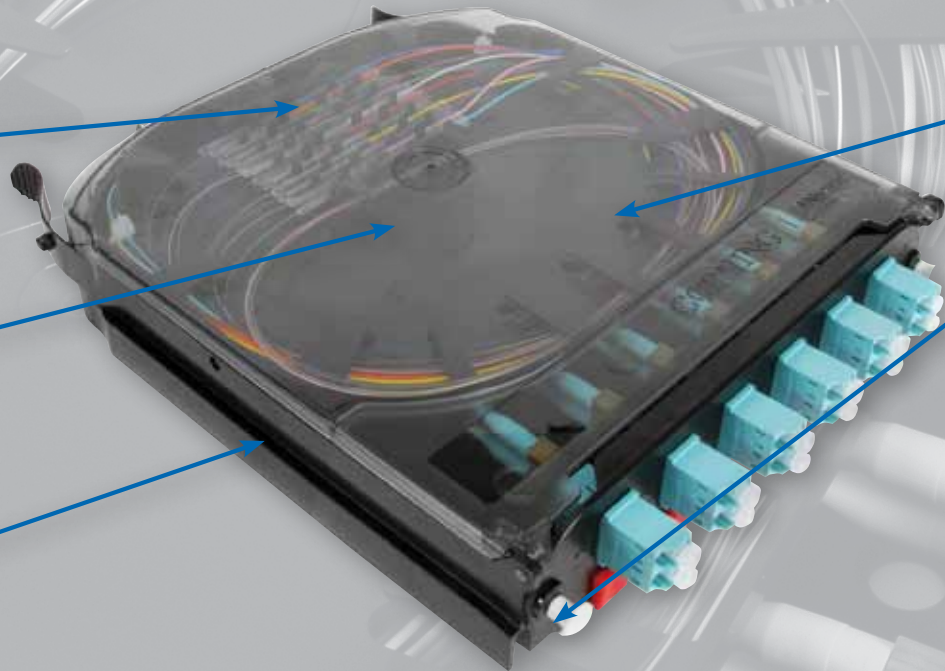
Built-in splice tray  
(CCH-CS)



Molded-in routing  
instructions (CCH-CS)



Bottom slack basket



See-through cover

Accepts standard  
CCH panels

Pigtail cassette  
option available



PET blister pack  
packaging



Comes complete with  
all components to install  
within any CCH housing

### Features

- Cassettes are packaged in individual, recyclable, easy-open PET blister packs
- A see-through cover allows instant visibility for inspection of fiber routing and splices
- A built-in splice tray (CCH-CS) provides both splice protection and management in a compact footprint
- Both the splice and slack cassette (used for direct termination) contain a tray for proper slack management within the cassette
- Molded-in illustrations ensure proper routing within the cassette regardless of installer skill level
- A fully terminated pigtail cassette is available for the fastest, easiest splice option
- Like all LANscape® Solutions hardware, they use standard CCH Panels

Corning Cable Systems LLC • PO Box 489 • Hickory, NC 28603-0489 USA  
800-743-2675 • FAX: 828-325-5060 • International: +1-828-901-5000  
[www.corning.com/cablesystems](http://www.corning.com/cablesystems)

Corning Cable Systems reserves the right to improve, enhance and modify the features and specifications of Corning Cable Systems products without prior notification. LANscape is a registered trademark of Corning Cable Systems Brands, Inc. All other trademarks are the properties of their respective owners. Corning Cable Systems is ISO 9001 certified. © 2012 Corning Cable Systems. All rights reserved. Published in the USA. LAN-1408-EN / January 2012

CORNING