

# EFH6

## 6" Fire Rated Housing

### Product Description

The EFH6 are new construction 6" housings that are UL Classified for a 2 hour fire rating. They are designed with double wall construction and non-combustible fiber insulation to prevent the passage of flames, toxic gasses and ignition gasses into plenum ceilings. The fiber insulation also acts as a sound deadening material, minimizing transfer of sounds between floors. The EFH6 is suitable for condominiums, apartment buildings, multi-family, commercial and residential applications.

#### Housing

- Internal housing of 24ga steel construction
- Two v-spring clips for easy installation of NICOR trims
- IDEAL connector or Edison base socket (depending on model)
- Interior filled with flexible, non-combustible insulation.
- External housing of 20ga heavy duty steel
- Matte black finish
- Thermally protected at 257°F (125°C) (EFH6 standard only)

#### Plaster Frame

- Single piece stamped 22ga steel frame
- Integrated hanger bar attachment features

#### Junction Box

- Listed for through branch circuit wiring and includes three 1/2", one 3/4" and one 3/8" knockouts
- Supplied with three quick connect push-in wire connectors
- Four pry-outs with integral strain relief simplify Romex installation

#### Hangar Bars

- Two fully adjustable, pre-scored hangar bars (13.6" - 25") with captive nails included on frame
- Swivel foot on end of bar rotates 90° for easy single person installation
- Bars can be locked into place after adjustment with preinstalled set screw
- Hangar bars can be repositioned 90° on frame without tools
- Unique hanger bar lip design helps align can to bottom of joist and T-Bar notch allow for installation into suspended ceilings

#### Listings & Ratings

- Input voltage of 120VAC
- Approved under ANSI/UL 263 and 1598
- UL Classified with Two Hour Fire Rating
- UL Listed for Damp Location
- Will meet Wet Location rating based on trim used
- Meets or exceeds ASTM-283 Air-Tight Requirements

#### Warranty

- 1-year warranty standard

### Lamp and Trim Options (EFH6 with Edison Base)

Lamp Type	Max Wattage	NICOR Trims
LED (any shape)	20	See below depending on shape
A19	40	17502, 17505, 17509, 17566, 17567
R30	75	17504, 17511, 17513, 17514, 17515, 17516, 17519, 17521, 17526, 17527, 17545, 17550, 17551, 17552, 17553, 17554, 17555, 17556, 17558, 17562
PAR30	75	
BR30	75	
BR40	90	17548, 17549

Suitable for Wet Location when used with: 17502, 17505, 17509, 17566, 17567

### Ordering Information

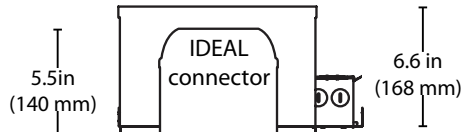
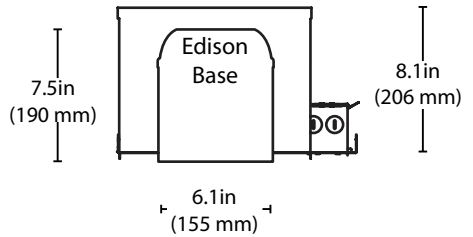
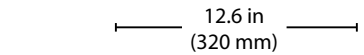
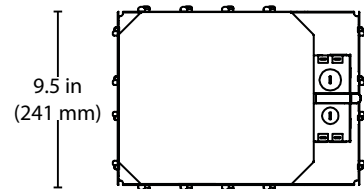
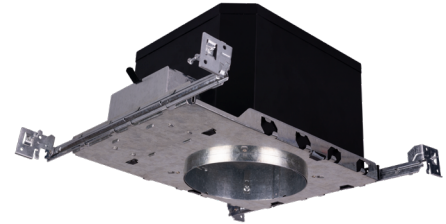
Series	Size	Base
EFH	6	Blank (Edison Base)
		-LED (IDEAL connector)

Project \_\_\_\_\_

Catalog \_\_\_\_\_

Type \_\_\_\_\_

Date \_\_\_\_\_



\*Location rating depends on trim used.

Specifications and dimensions subject to change without notice.

NICOR, Inc. 2200 Midtown Place NE, Albuquerque, NM 87107 P: 800.821.6283 F: 800.892.8393  
www.nicorlighting.com February 22, 2019 11:45 AM

