

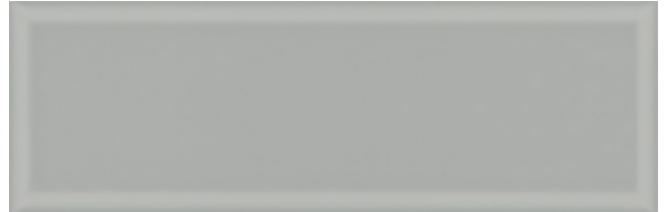
# Color Perspectives

## Wall Tile

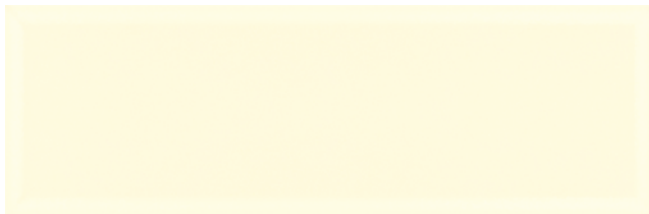
### Available Colors



**CPR01** ▶ Light



**CPR02** ▶ Coin



**CPR04** ▶ Vanilla



**CPR03** ▶ Water



**CPR05** ▶ Tea



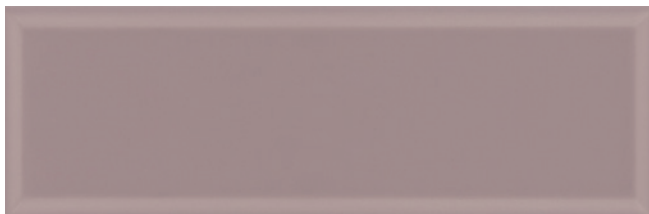
**CPR06** ▶ Marine



**CPR07** ▶ Topaz



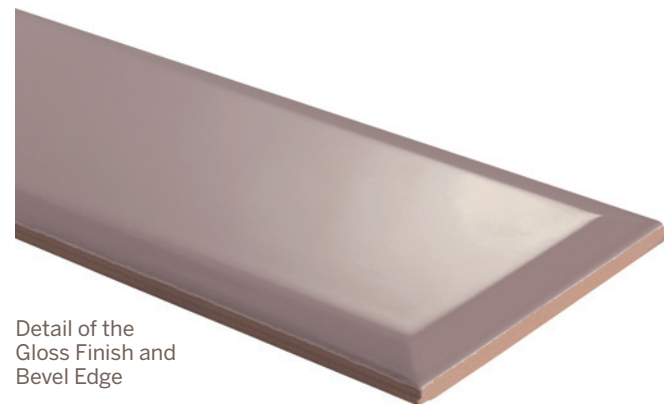
**CPR08** ▶ Pollen



**CPR09** ▶ Viola

### Features and Benefits

- Nine color calibrated ceramic wall tile collection in a larger 4 x 12 Subway tile size
- Upscale bevel highlights the grandiose shape, adding dimension to any room
- The glossy finish is easy to clean and reflects light making them a beautiful choice for bathrooms, kitchens and more.



Detail of the  
Gloss Finish and  
Bevel Edge



# Color Perspectives

## Wall Tile



### Application Areas

Finish	Interior Floors (dry)	Interior Walls (wet/dry)	Exterior Walls	Interior Floors (Standing water/shower floors)	Exterior/Paving	Pool/Fountain Full Lining**	Water Line Pool/Fountains
Gloss		✓					

For more information on ANSI- A362.3 visit our website at <https://www.crossvilleinc.com/Resources/Tile-101/DCOF?tab=1>

### CrossvilleInc.com

If you want a better idea of what Crossville tile would look like in a particular room setting, simply visit our website and click on Cross-Vision. This powerful software tool allows you to visualize different types of Crossville tile. In addition, you'll find comprehensive information about Crossville's entire portfolio of products. You can also learn about the latest styles and trends from industry experts, download detailed care and maintenance instructions for our various products, or browse electronic versions of Crossville's product brochures. So whether you need information about Crossville products or tile in general, please visit us at [CrossvilleInc.com](http://CrossvilleInc.com). Information listed here is subject to change.

### Crossville® Sample Express

Visit the website to learn more:  
[CrossvilleInc.com/Products/Color-Perspectives](http://CrossvilleInc.com/Products/Color-Perspectives)

### Loose Tile Samples

Sizes may vary depending on product series  
Max. of 4 large field tile per order

### Standard Shipping

FedEx Ground

### Sizes (CPR08 Pollen Shown)



4 x 12

### Sizes & Finishes

#### Field Tile - Ceramic

Nominal (in)	Actual (in)	Thickness (in)	Grout Joint (in)	Finish
4 x 12	3-15/16 x 11-13/16	1/4	1/16	Gloss

Crossville recommends a minimum 1/16" grout joint.

### Shade & Texture Index

Color Perspectives has a shade variation of V1.



This tile product is produced with a V1 variation. Differences among pieces from the same production run are minimal. Inspect the product upon delivery and for best results, blend tile from several cartons during installation.

### Recommended Use

Color Perspectives tile is recommended for interior vertical surfaces in wet or dry applications. See [CrossvilleInc.com](http://CrossvilleInc.com) for detailed installation instructions.

### Care and Maintenance

Regular cleaning is the best way to keep Color Perspectives tile looking good for years to come. Use clean, hot water (combined with a non-abrasive household cleaner, if needed). Rinse thoroughly and dry with a soft cloth to prevent spots. No waxes or sealers are need. More information regarding the care and maintenance of Crossville® products is available at [CrossvilleInc.com](http://CrossvilleInc.com).

### Our Warranty

Crossville Inc. guarantees that its products will meet or exceed the performance specifications outlined in ANSI A137.1 and in the performance data section of the Crossville, Inc. general product catalog. For complete details check our website at [CrossvilleInc.com](http://CrossvilleInc.com).

Information listed here is subject to change. Please refer to [CrossvilleInc.com](http://CrossvilleInc.com) for the latest, most accurate information.

**Crossville, Inc.**

PO Box 1168  
Crossville, TN  
38557

**E-Mail** [Crossc@CrossvilleInc.com](mailto:Crossc@CrossvilleInc.com)  
**Web** [CrossvilleInc.com](http://CrossvilleInc.com)

**Phone** 931.484.2110  
**Fax** 931.456.2956