

FINISHES: MATTE | TEXTURED

USAGE



MATERIAL



PRICING



SPECIAL FEATURES



QUARRY

SHADOW GRAY 0N46

ABRASIVE SURFACE



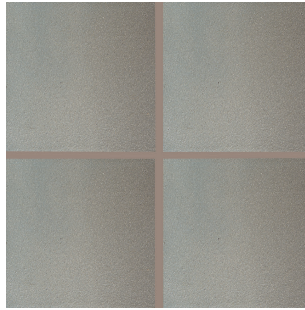
SHADOW GRAY 0N46 (2)

SMOOTH SURFACE



SHADOW GRAY 0N46 (2)

FLASH



SHADOW FLASH 0N56 (2)

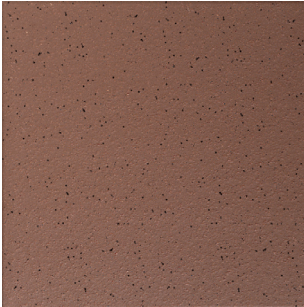
SIZES:



FINISHES: MATTE | TEXTURED

LAVA RED 0N01

ABRASIVE SURFACE



LAVA RED 0N01 (1)

SMOOTH SURFACE



LAVA RED 0N01 (1)

FLASH



FIRE FLASH 0N02 (1)

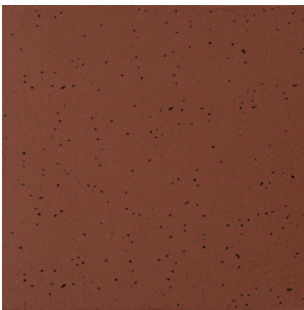
SIZES:



FINISHES: MATTE | TEXTURED

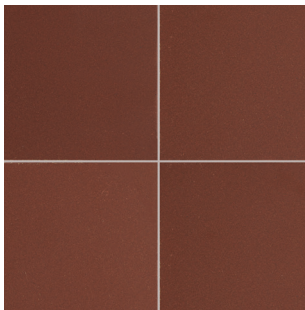
HARVEST RED BLEND 0Q70

ABRASIVE SURFACE



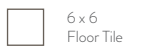
HARVEST RED BLEND 0Q70 (1)

SMOOTH SURFACE



HARVEST RED BLEND 0Q70 (1)

SIZES:



FINISHES: MATTE | TEXTURED



VISIT AMERICANOLEAN.COM/WHYTILE FOR A COMPLETE LIST OF QUALIFICATIONS AND EXCLUSIONS.

FINISHES: MATTE | TEXTURED

USAGE



MATERIAL



PRICING



SPECIAL FEATURES



SHADOW GRAY, SHADOW FLASH, LAVA RED & FIRE FLASH



SIZES

			THICKNESS	SQ. FT./ CARTON	PIECES/ CARTON
	8 x 8 Floor Tile	8 x 8" (20.30 cm x 20.30 cm)	1/2"	11.11	25
	6 x 6 Floor Tile	6" x 6" (15.20 cm x 15.20 cm)	1/2"	11.00	44

APPLICATIONS

	TARGET DCOF WET	SUITABLE
Dry & Level – Interior Floor	N/A	●
Wet & Level – Interior Floor	≥ 0.42	●
Shower Floors (Residential or Light Commercial)	≥ 0.42	●**
Exterior Floor Applications (including patios, pool decking & other wet areas with minimal footwear)	≥ 0.60	●
Ramps & Inclines	≥ 0.65	●*
Walls/Backsplashes	N/A	●
Countertops	N/A	●
Pool Linings	N/A	●**

A DCOF value of ≥ 0.42 is the standard for tiles specified for level interior spaces expected to be walked upon when wet, as stated in ANSI A137.1-A326.3. For more information about DCOF and the DCOF AcuTest™, visit americanolean.com/DCOF.

APPLICATION NOTES:

Suitable for exterior applications (provided it is noted as suitable in the applications chart above) in freezing and non-freezing climates, when proper installation methods are followed.

Suitable for industrial installations requiring high compressive strength.

Subject to Oils: Absorbs oils, grease and other liquids to keep floors slip-resistant, yet does not contaminate the surface. Proper cleaning methods easily remove any contaminants that do get absorbed into the tile.

* Abrasive surface only

** 6 x 6 floor tile only

DURABILITY

Floor Surface Wear Resistance

1 Residential Bathrooms	3 All Residential / Light Commercial
2 All Residential Areas	④ All Residential / Commercial

FEATURES



PRE-CONSUMER
RECYCLED MATERIALS



MADE IN THE U.S.A.



ZEROTOX
Healthy Homes | Healthy Planet

All or select items within this series meet the requirements for these qualifications. For more information visit americanolean.com.

TRIM

			NUMBER	PIECES/ CARTON
	Floor Bullnose [▲]	6 x 6	Q1665	44
	Floor Bullnose Corner [▲]	6 x 6	QCRL166	44
	Floor Bullnose [■]	8 x 8	Q1885	25
	Floor Bullnose Corner [■]	8 x 8	QCRL1885	25
	Cove Base*	5 x 8	Q3585	24
	Cove Base*	5 x 6	Q3565	44
	Cove Base Outcorner Right*	5 x 6	QCR3565	20
	Cove Base Outcorner Left*	5 x 6	QCL3565	20
	Cove Base Incorner*	1 x 5	QB3565	25

Cove base trim is intended to coordinate with floor tile in the standard 90-degree installation position.

[▲] Available in smooth, abrasive and flash

[■] Available in smooth and flash

* Available in smooth finish only

INSTALLATION

Grout Joint Recommendation	Shade Variation
3/8"	

PERFORMANCE CHARACTERISTICS

	ASTM#	FLOOR RESULT
Water Absorption	C373	< 3.0%
Breaking Strength	C648	> 400 lbs
Scratch Hardness	MOHS	7.0
Chemical Resistance	C650	Resistant

For additional information on test results, visit us at: americanolean.com/information/TestResults.

NOTES

Strong random shading enhances the natural beauty of this product. To achieve optimal results, tile should be selected from multiple cartons and shading arrangement planned prior to installation.

Since there are variations in all fired ceramic and natural products, tile and trim supplied for your particular installation may not match samples. Final confirmation should be made from actual tiles and trim prior to installation. Manufactured in accordance with ANSI A137.1 standards.

Water, oil, grease, etc. create slippery conditions. Floor applications with exposure to these conditions require extra caution in product selection. Abrasive surface suitable for use on ramps.

For additional information refer to "Factors to Consider" at: americanolean.com/Factors.

Special care should be taken when grouting; a grout release is recommended to prevent finely powdered pigments from lodging in the pores of the tile surface.

It is necessary to follow the proper procedures and recommendations for the grout and maintenance products' manufacturers.



FINISHES: MATTE | TEXTURED

USAGE



MATERIAL



PRICING



SPECIAL FEATURES



HARVEST RED BLEND

SIZES

			THICKNESS	SQ. FT./ CARTON	PIECES/ CARTON
	6 x 6 Floor Tile	6" x 6" (15.20 cm x 15.20 cm)	3/8"	10.78	44

APPLICATIONS

	TARGET DCOF WET	SUITABLE
Dry & Level – Interior Floor	N/A	●
Wet & Level – Interior Floor	≥ 0.42	●
Shower Floors (Residential or Light Commercial)	≥ 0.42	●
Exterior Floor Applications (including patios, pool decking & other wet areas with minimal footwear)	≥ 0.60	●
Ramps & Inclines	≥ 0.65	●*
Walls/Backsplashes	N/A	●
Countertops	N/A	●
Pool Linings	N/A	●

A DCOF value of ≥ 0.42 is the standard for tiles specified for level interior spaces expected to be walked upon when wet, as stated in ANSI A137.1-A326.3. For more information about DCOF and the DCOF AcuTest™, visit americanolean.com/DCOF.

APPLICATION NOTES:

Suitable for exterior applications (provided it is noted as suitable in the applications chart above) in freezing and non-freezing climates, when proper installation methods are followed

Suitable for industrial installations requiring high compressive strength.

Subject to Oils: Absorbs oils, grease and other liquids to keep floors slip-resistant, yet does not contaminate the surface. Proper cleaning methods easily remove any contaminants that do get absorbed into the tile.

* Abrasive surface only

DURABILITY

Floor Surface Wear Resistance

1	Residential Bathrooms	3	All Residential / Light Commercial
2	All Residential Areas	4	All Residential / Commercial

QUARRY

TRIM

			NUMBER	PIECES/ CARTON
	Bullnose [▲]	6 x 6	Q1665	44
	Roundtop Cove Base [▲]	6 x 6	Q3665	12
	Cove Base Incorner [▲]	1 x 6	QB3665	40
	Cove Base Outside Corner [▲]	1 x 6	QC3665	20

Cove base trim is intended to coordinate with floor tile in the standard 90-degree installation position.

[▲] Trim is not available with abrasive

INSTALLATION

Grout Joint Recommendation	Shade Variation
3/8"	RANDOM (V4)

PERFORMANCE CHARACTERISTICS

	ASTM#	FLOOR RESULT
Water Absorption	C373	< 3.0%
Breaking Strength	C648	> 400 lbs
Scratch Hardness	MOHS	7.0
Chemical Resistance	C650	Resistant

For additional information on test results, visit us at: americanolean.com/information/TestResults.

NOTES

Strong random shading enhances the natural beauty of this product. To achieve optimal results, tile should be selected from multiple cartons and shading arrangement planned prior to installation.

Since there are variations in all fired ceramic and natural products, tile and trim supplied for your particular installation may not match samples. Final confirmation should be made from actual tiles and trim prior to installation. Manufactured in accordance with ANSI A137.1 standards.

Water, oil, grease, etc. create slippery conditions. Floor applications with exposure to these conditions require extra caution in product selection. Abrasive surface suitable for use on ramps.

For additional information refer to "Factors to Consider" at: americanolean.com/Factors.

Special care should be taken when grouting; a grout release is recommended to prevent finely powdered pigments from lodging in the pores of the tile surface.

It is necessary to follow the proper procedures and recommendations for the grout and maintenance products' manufactures.

FEATURES



ZEROTOX
Healthy Homes | Healthy Planet

All or select items within this series meet the requirements for these qualifications. For more information visit americanolean.com.



888.AOT.TILE



AMERICAN OLEAN®
PROVEN IN TILE™