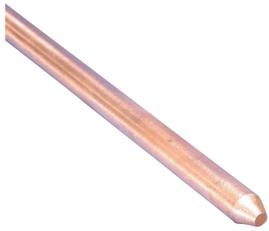


SOLID COPPER GROUND ROD, POINTED, 1/2" DIA, 8'

CATALOG NUMBER

LPC700



CERTIFICATIONS



FEATURES

Solid copper ground rods made of high conductive hard drawn bare copper

PRODUCT ATTRIBUTES

Material: Copper

Tensile Strength: 42000 lbf/in² Min

Ground Rod Diameter, Nominal: 1/2"

Ground Rod Diameter, Actual (Ø): 0.5"

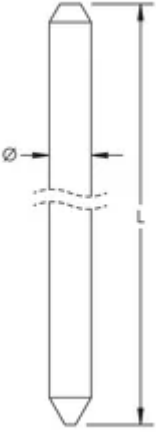
Length (L): 8'

Unit Weight: 6.1 lb

ADDITIONAL PRODUCT DETAILS

Due to the inherent softness of the copper material, special consideration should be given when driving this product into the soil.

DIAGRAMS



WARNING

nVent products shall be installed and used only as indicated in nVent's product instruction sheets and training materials. Instruction sheets are available at www.nvent.com and from your nVent customer service representative. Improper installation, misuse, misapplication or other failure to completely follow nVent's instructions and warnings may cause product malfunction, property damage, serious bodily injury and death and/or void your warranty.

North America

+1.800.753.9221
Option 1 – Customer Care
Option 2 – Technical Support

Europe

Netherlands:
+31 800-0200135
France:
+33 800 901 793

Europe

Germany:
800 1890272
Other Countries:
+31 13 5835404

APAC

Shanghai:
+ 86 21 2412 1618/19
Sydney:
+61 2 9751 8500



Our powerful portfolio of brands:
nVent.com CADDY ERICO HOFFMAN RAYCHEM SCHROFF
TRACER