

FUTUREGLASS



Glass Railing Systems

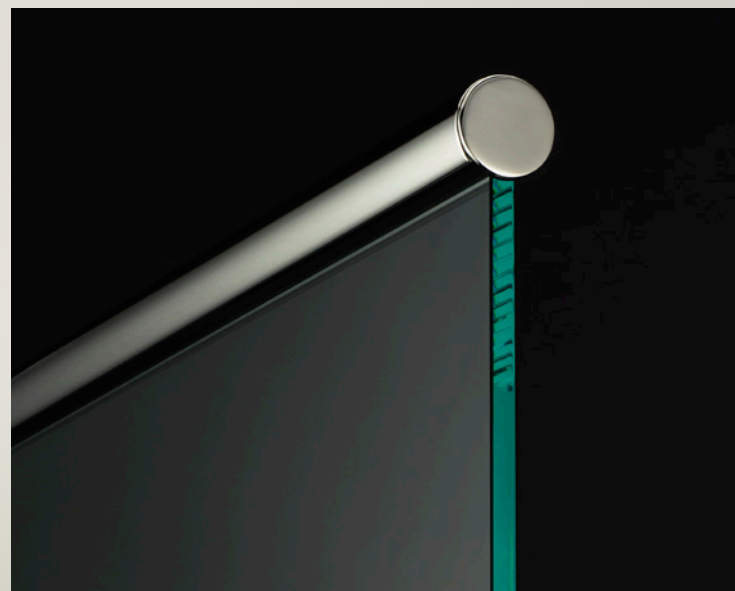
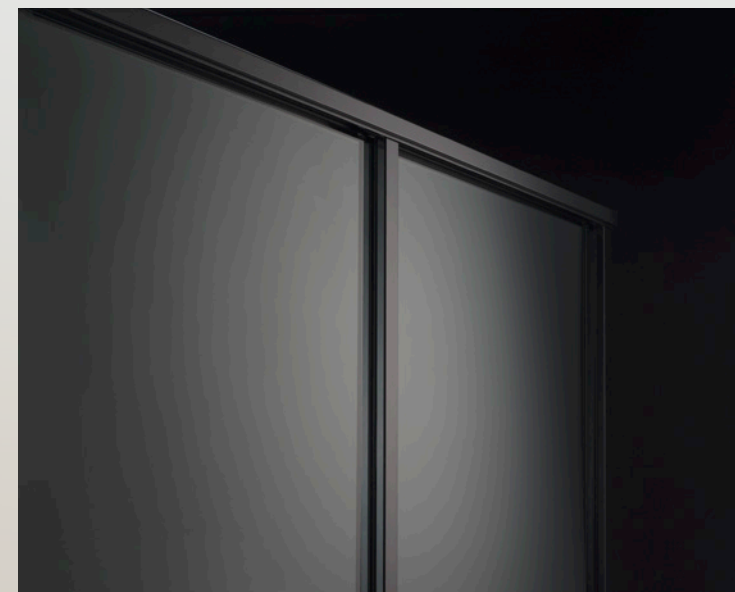
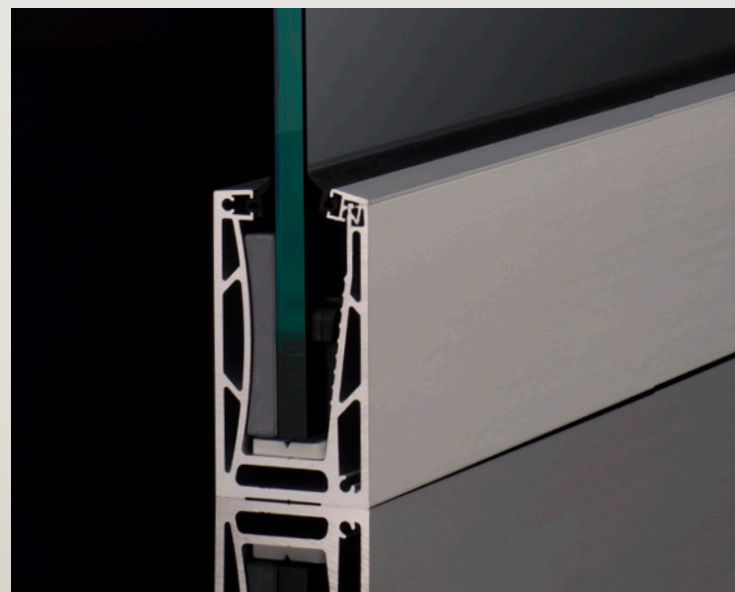
Contents

Channels	6
Spigots	10
Handrails	17
Posts	27
Glass Panels	34

Introducing Glass Railing

Explore our complete line of spigots, channels, posts, glass panels, railings and accessories. Design and manifest your new glass railing with our Online Glass Railing Designer. Get everything you need, delivered at once to get your project up and running.

futureglass.us

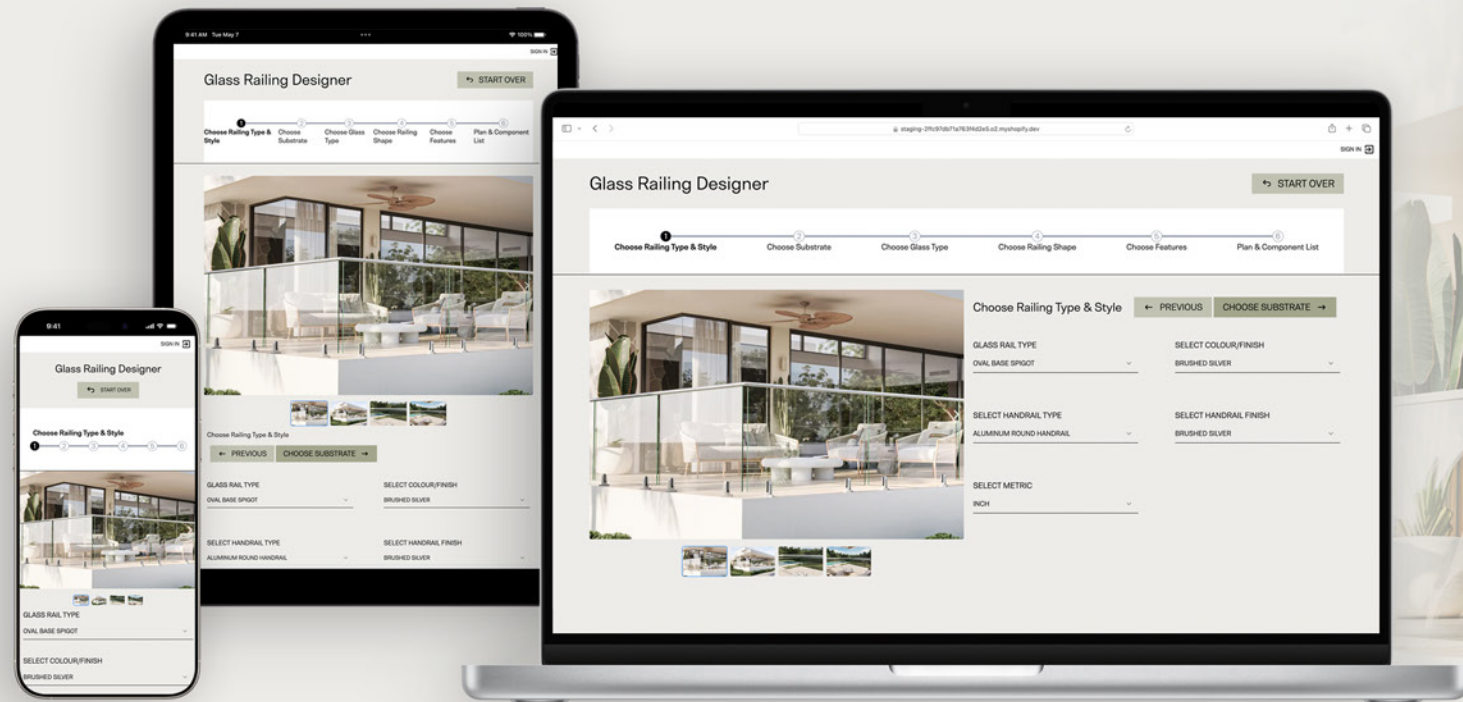


FUTUREGLASS

Design Online

Your Glass Railing Project Starts Here.

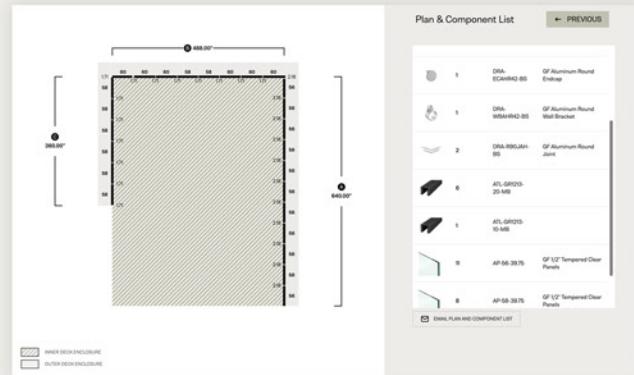
Use our online glass railing configurator and select from multiple systems including spigots, posts, or base shoe. Select glass thickness, substrate, fence shape and measurement configuration. Use preconfigured layouts or design your own.



Preview Your Selected Glass Railing System



Provides Precise Layout & Parts List



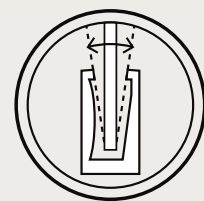


Glass Railing Simplified

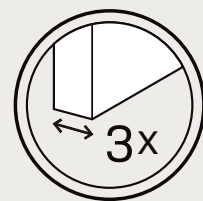
Our all new patented taper lock glass railing channel system is a quick and simple solution for any channel/base shoe installation.



Taper Lock Wedge System for Quick Install



1"+ Out of Plumb Panel Adjustment in Both Directions



Supports Three Glass Thickness Options



FAST FIT CHANNEL/BASE SHOE SYSTEM FEATURES

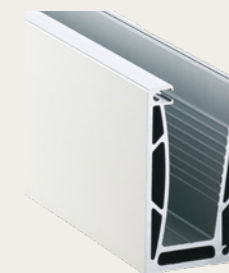
- › Fast Fit Taper Lock system for quick and simple installation
- › 1³/₁₆" out of plumb glass panel adjustment in both directions
- › Fully adjustable from inside edge
- › Compact slim line appearance and construction
- › Fully engineered
- › Available in three finishes, Brushed Silver, Matte Black & White
- › Finished body, no cover or fascia boards necessary

RANA 100 × 55 mm Residential Aluminum Fence Channel

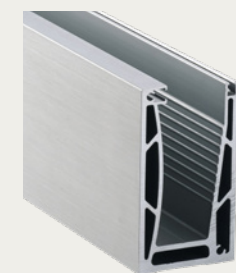
The Rana Channel is part of our patented innovation of the FastFit Taper Lock Channel System. While being fully adjustable from the inside, it is engineered from start to finish to provide a tilt adjustability of 1.2 inches (30 mm) in both directions. The Rana Channel is a complete and finished channel system with a compact, slim design and appearance. There is no extra hassle of fascia boards or covers of any kind. Complete it with any of our available handrail systems for a clean, streamlined look that minimizes visual impact. Accommodates 1/2" (12 mm), 9/16" (14 mm), and 11/16" (17 mm) glass thickness.



Brushed Silver
RAN-CHRES-10-BS
RAN-CHRES-19-BS



White
RAN-CHRES-10-WH
RAN-CHRES-19-WH



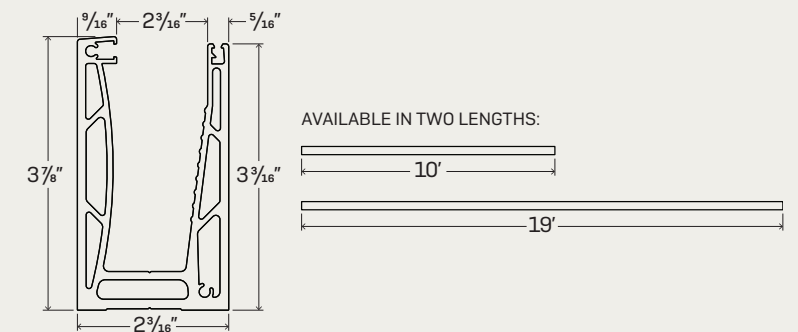
Brushed Silver
RAN-CHRES-10-BS
RAN-CHRES-19-BS



Matte Black
RAN-CHRES-10-MB
RAN-CHRES-19-MB

RANA CHANNEL SYSTEM FEATURES

- › Fully adjustable from inside edge
- › No cover or fascia boards necessary
- › Tilt adjustability of 1.2" (30 mm) in both directions
- › Accommodates 1/2" (12 mm), 9/16" (15 mm), and 11/16" (17 mm) glass thickness
- › Available in 2 channel lengths: 10 ft. (3048 mm) and 19 ft. (5791 mm)
- › Comes with all components (excluding glass)
- › Specialty tool kit required for installation (Item# KIT-TOOLS on page 9)
- › Certified for use in extreme weather conditions



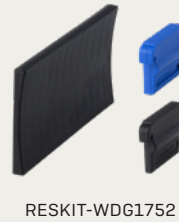
RANA

Corners, Endcaps, and Other Elements

Parts and tools were designed and engineered specifically for use with the Rana Channel System. All parts required for installation come with each channel segment. To ensure proper installation, Future Glass specialty tools must also be purchased (See Item# KIT-TOOLS on page 9).



Connecting Pins (4 pack) for Rana Channel



Leveling Wedges and Fixing Wedges for 10' Rana Channel Segment— $\frac{1}{16}$ " glass



Leveling Wedges, and Fixing Wedges for 10' Rana Channel Segment— $\frac{1}{2}$ " and $\frac{9}{16}$ " glass



Channel Bottom Fixing Wedge—15 pcs Black



Channel Glass Leveling Wedge— $\frac{1}{2}$ " and $\frac{9}{16}$ " glass



Channel Glass Leveling Wedge— $\frac{1}{16}$ " glass (Black)



Channel Top Fixing Wedge—15 pcs Blue



Rubber Gasket for Glass Clamp

TOOL KIT

Aluminum Floor Mounted Channel / Base Shoe System Tool Kit

Our Future Glass Tool Kit must be purchased for any first time install of our channel/base shoe system. These tools were designed and engineered specifically for use with the Rana Channel System and will make installation quick and easy. The Tool Kit includes a branded Future Glass carry bag and all of the individual tools shown to the right.



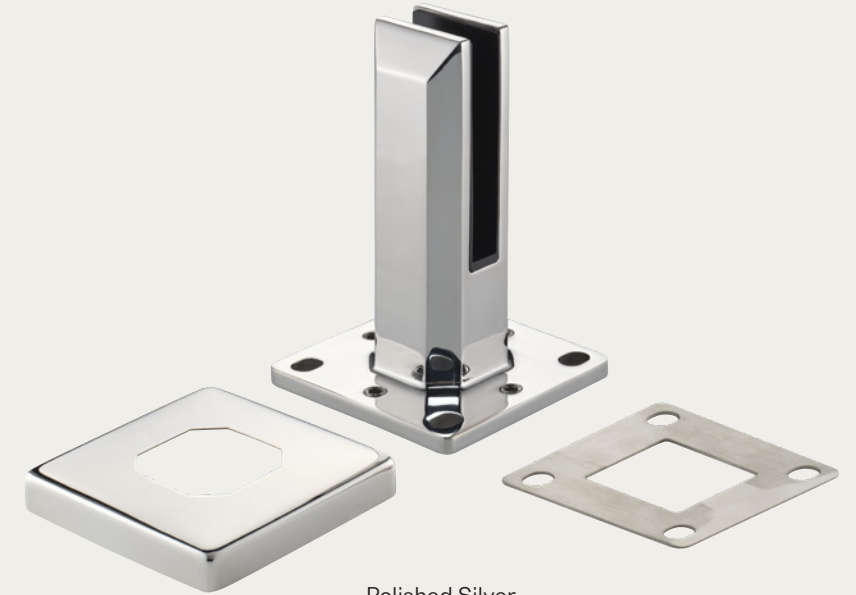
REPLACEMENT TOOLS CAN ALSO BE PURCHASED SEPARATELY USING THE SKUS BELOW:



ARA

Square Baseplate Spigot

The Ara is a square baseplate spigot designed with rectangular, clean modern lines. It is designed for surface mounted applications to achieve a fully frameless glass aesthetic, while being engineered to US glass railing standards. Made from the highest grade Duplex 2205 Stainless Steel, it provides the best protection for outdoor applications.



Polished Silver
ARA-BPSQ-PS

ARA SPIGOT FEATURES

- › Suited for $\frac{3}{8}$ " to $\frac{9}{16}$ " (10 to 14.28mm) glass
- › 3.94" (100 mm) slot, 0.63" (16 mm) high cover plate
- › Multiple finishes available in 2205 duplex stainless steel
- › Glass height adjustment up to 6mm, adjustable camber
- › Optional 2mm packing shim (included)
- › Compatible with LED Lighting Kit
- › Easy to install
- › Easy to maintain



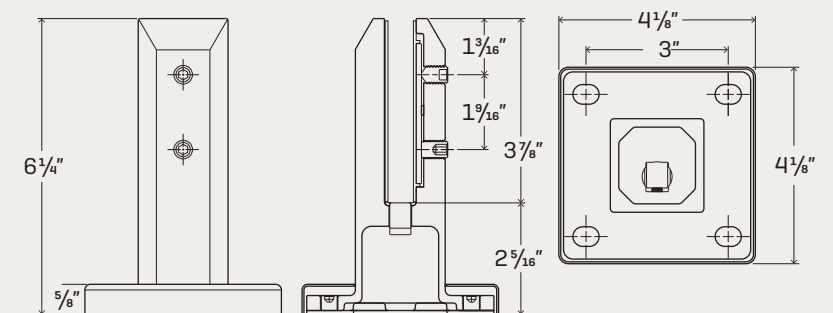
White
ARA-BPSQ-WH



Brushed Silver
ARA-BPSQ-BS



Matte Black
ARA-BPSQ-MB



Spigots

DORADO

Round Baseplate Spigot

The Dorado is a round baseplate spigot designed with a circular, clean modern appearance. It is designed for surface mounted applications to achieve a fully frameless glass aesthetic, while being engineered to US glass railing standards. Made from the highest grade 2205 Duplex Stainless Steel, it provides the best protection for outdoor applications.



DORADO SPIGOT FEATURES

- › Suited for 3/8" to 9/16" (10 to 14.28 mm) glass
- › 3.94" (100mm) slot, 0.63" (16 mm) high cover plate
- › Multiple finishes available in 2205 duplex stainless steel
- › Glass height adjustment up to 6mm, adjustable camber
- › Optional 2mm packing shim (included)
- › Easy to install
- › Easy to maintain



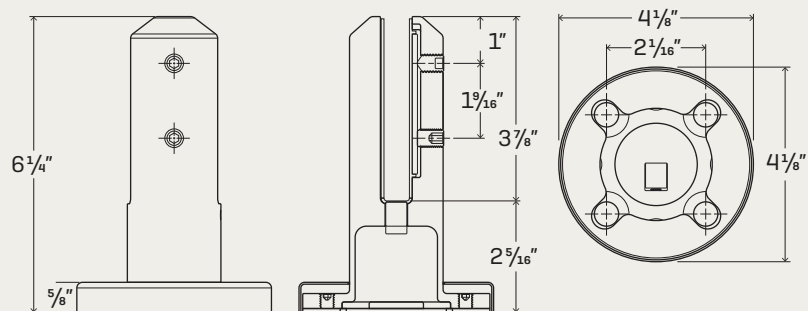
White
DOR-BPRD-WH



Brushed Silver
DOR-BPRD-BS



Matte Black
DOR-BPRD-MB



CANIS

Oval Baseplate Spigot

The Canis is an oval baseplate spigot designed with a slimline profile to achieve the ultimate frameless look. It is designed for surface mounted applications and engineered to US glass railing standards. Made from the highest grade 2205 Duplex Stainless Steel, it provides the best protection for outdoor applications.



CANIS SPIGOT FEATURES

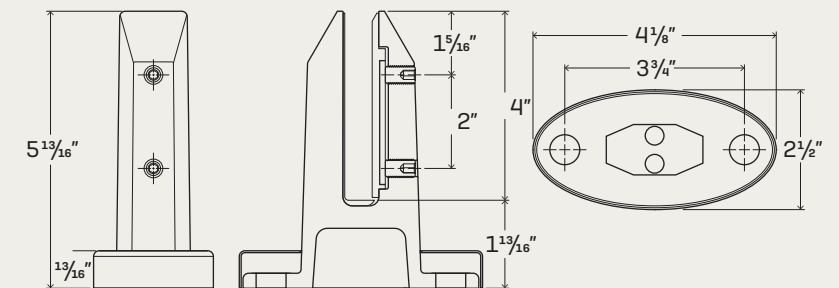
- › Suited for 3/8" to 9/16" (10 to 15 mm) glass
- › 3.98" (101mm) slot, 0.94" (24 mm) high cover plate
- › Multiple finishes available in 2205 duplex stainless steel
- › Easy to install
- › Easy to maintain



Brushed Silver
CAN-BPOV-BS



Matte Black
CAN-BPOV-MB



FORNAX

Tilt-Lock Side Fixed Spigot

The Fornax is a side mounting spigot designed with a rectangular modern shape. When installed, the vertical glass position can be adjusted with ease. It is designed for face mounting applications to achieve a fully frameless glass aesthetic, while being engineered to US glass railing standards. Made from the highest grade Duplex 2205 Stainless Steel, it provides the best protection for outdoor applications.



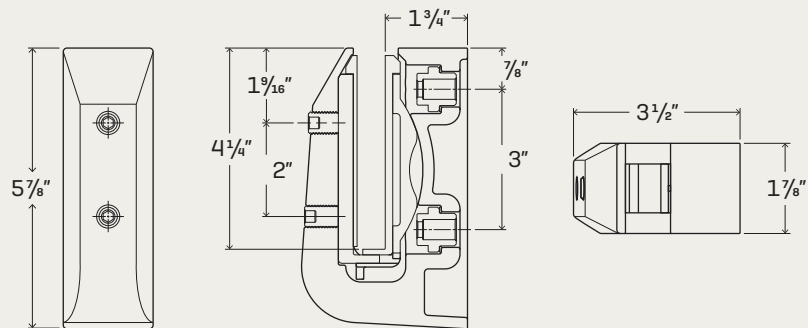
Polished Silver
FOR-TLSF -PS



Brushed Silver
FOR-TLSF-BS



Matte Black
FOR-TLSF-MB

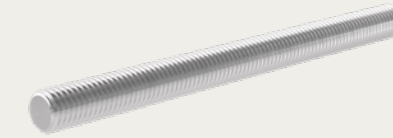


FORNAX SPIGOT FEATURES

- › TILT-LOCK side mounting fixed spigot
- › Suited for 1/2" to 1 1/8" (12 to 17.52mm) glass
- › Multiple finishes available in 2205 duplex stainless steel
- › Easy to install
- › Easy to maintain

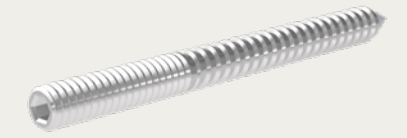
SPIGOT PARTS

From basic screws and shims to stainless steel glue and LED lights- Futureglass has everything that it takes to make the details of your glass railing project come to life.



THREAD-RODS-KIT

100mm Threaded Rods



LAG-SCREW-KIT

150mm Lag Screws



SSGLUE

Stainless Steel Products Compound



LED-LGHT-KIT

Spigot Fence Lighting Kit



Brushed Silver
RDP SHIM-BS

Round Height
Adjustment Shim



Brushed Silver
SQPSHIM-BS

Square Height
Adjustment Shim

STIFFENERS



Brushed Silver
HER-STB180-BS



Matte Black HER-STB180-MB Polished Silver HER-STB180-PS White HER-STB180-WH

Single Hole 180 Degree Glass to Glass
Stainless Steel Stiffener Bracket



Brushed Silver
HER-STB90-BS



Matte Black HER-STB90-MB Polished Silver HER-STB90-PS White HER-STB90-WH

Single Hole 90 Degree Glass to Glass
Stainless Steel Stiffener Bracket



Brushed Silver
HER-STBAJ-BS



Matte Black HER-STBAJ-MB Polished Silver HER-STBAJ-PS White HER-STBAJ-WH

Single Hole Adjustable Glass to Glass
Stainless Steel Stiffener Bracket



Brushed Silver
HER-STBW-BS



Matte Black HER-STBW-MB Polished Silver HER-STBW-PS White HER-STBW-WH

Single Hole 180 Degree Glass to Wall
Stainless Steel Stiffener Bracket

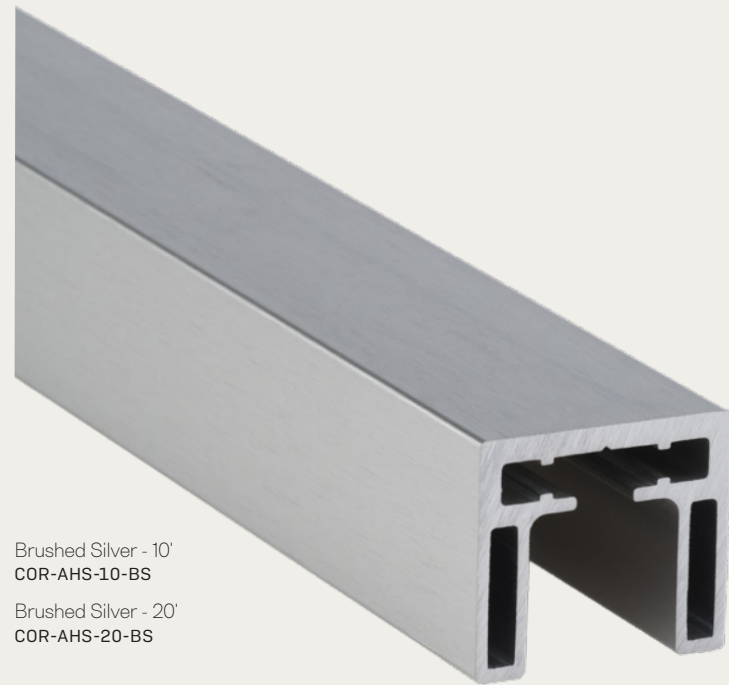


Handrails

CORONA

40×36 mm Square Aluminum Handrail

The Corona is a square, premium grade aluminum handrail system designed to work in tandem with our spigot and channel/base shoe frameless glass railing systems. Its streamline design minimizes visual impact on your view line and is available in the same premium finishes to match your spigots or channel/base shoe.



Brushed Silver - 10'
COR-AHS-10-BS
Brushed Silver - 20'
COR-AHS-20-BS

CORONA SQUARE HANDRAIL FEATURES

- › Suitable for 1/2"–7/8" (12–21.52 mm) glass
- › Comes in 10 or 20 ft. (3048 or 6100 mm) but can be cut to any length
- › FastFit design for easy installation
- › Streamlined design for minimal visual impact
- › No welding required
- › Glass and endcaps not included
- › Easy to maintain



White - 10'
COR-AHS-10-WH
White - 20'
COR-AHS-20-WH



Matte Black - 10'
COR-AHS-10-MB
Matte Black - 20'
COR-AHS-20-MB



Brushed Silver
COR-ECAHS-BS



Matte Black
COR-ECAHS-MB



White
COR-ECAHS-WH

Endcap for 40×36mm Square Aluminum Handrail



Brushed Silver
COR-S90JAH-BS



Matte Black
COR-S90JAH-MB



White
COR-S90JAH-WH

90 Degree Joiner for Horizontal Square Aluminum Handrail



Brushed Silver
COR-SAJAH-BS



Matte Black
COR-SAJAH-MB



White
COR-SAJAH-WH

Aluminum Square Adjustable Horizontal Joiner



Brushed Silver
COR-WBAHS-BT-BS

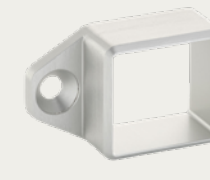


Matte Black
COR-WBAHS-BT-MB



White
COR-WBAHS-BT-WH

Wall Bracket for 40×36 mm Square Aluminum Handrail – Bottom Tab



Brushed Silver
COR-WBAHS-ST-BS



Matte Black
COR-WBAHS-ST-MB



White
COR-WBAHS-ST-WH

Wall Bracket for 40×36 mm Square Aluminum Handrail – Side Tab



Brushed Silver
KAI-INT180JA-BS

180 Degree Internal Joiner for Horizontal Square or Round Aluminum Handrail



Brushed Silver
KAI-INT90JA-BS

90 Degree Internal Joiner for Horizontal Square or Round Aluminum Handrail



Brushed Silver
KAI-INTADJA-BS

Adjustable Internal Vertical Joiner for Horizontal Square or Round Aluminum Handrail



ATLAS

ATL-GR1213-10-MB
ATL-GR1213-20-MB

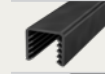
Glass Rubber for 1/2" (12–12.76 mm) Thick Glass Panels



ATLAS

ATL-GR1315-10-MB
ATL-GR1315-20-MB

Glass Rubber for 3/8" (13–15 mm) Thick Glass Panels



ATLAS

ATL-GR1518-10-MB
ATL-GR1518-20-MB

Glass Rubber for 1/2" (15–17.52 mm) Thick Glass Panels



ATLAS

ATL-GR2022-10-MB
ATL-GR2022-20-MB

Glass Rubber for 3/4" (20.76–21.52 mm) Thick Glass Panels

DRACO

42mm Round Aluminum Handrail

The Draco is a round shaped premium grade aluminum handrail system designed to work in tandem with our spigot and channel/base shoe frameless glass railing systems. The streamline design minimizes visual impact on your view line and is available in the same premium finishes to match your spigots or channel/base shoe.



Brushed Silver - 10'
DRA-AHR42-10-BS
Brushed Silver - 20'
DRA-AHR42-20-BS

DRACO ROUND HANDRAIL FEATURES

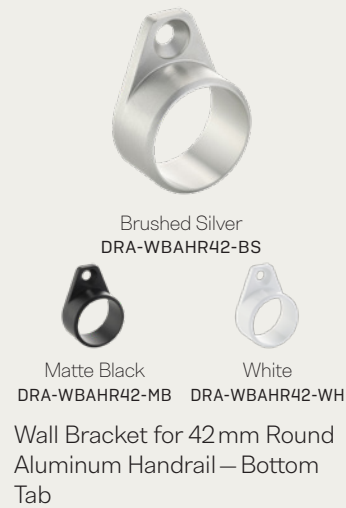
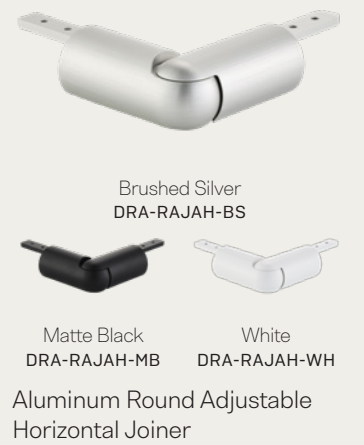
- › Suitable for 1/2" - 7/8" (12-21.52 mm) glass
- › Comes in 10 or 20 ft. (3048 or 6100 mm) but can be cut to any length
- › FastFit design for easy installation
- › Streamlined design for minimal visual impact
- › No welding required
- › Glass and endcaps not included
- › Easy to maintain



White - 10'
DRA-AHR42-10-WH
White - 20'
DRA-AHR42-20-WH



Matte Black - 10'
DRA-AHR42-10-MB
Matte Black - 20'
DRA-AHR42-20-MB



	ATLAS ATL-GR1213-10-MB ATL-GR1213-20-MB	Glass Rubber for 1/2" (12-12.76 mm) Thick Glass Panels
	ATLAS ATL-GR1315-10-MB ATL-GR1315-20-MB	Glass Rubber for 3/8" (13-15 mm) Thick Glass Panels
	ATLAS ATL-GR1518-10-MB ATL-GR1518-20-MB	Glass Rubber for 1/2" (15-17.52 mm) Thick Glass Panels
	ATLAS ATL-GR2022-10-MB ATL-GR2022-20-MB	Glass Rubber for 13/16" (20.76-21.52 mm) Thick Glass Panels

MATA

40×30mm Square Stainless Steel Handrail

The Mata is a square shaped handrail system designed to work in tandem with our spigot and channel/base shoe frameless glass railing systems. It is made of the highest grade 2205 duplex stainless steel giving it a sleek and streamlined aesthetic to minimize visual impact. Available in the same premium finishes to match your spigots or channel/base shoe.



Brushed Silver - 10'
MAT-SHS-10-BS

Brushed Silver - 20'
MAT-SHS-20-BS

CORONA SQUARE HANDRAIL FEATURES

- › Suitable for 1/2" - 7/8" (12-21.52 mm) glass
- › Comes in 10 or 20 ft. (3048 or 6100 mm) but can be cut to any length
- › FastFit design for easy installation
- › Streamlined design for minimal visual impact
- › No welding required
- › Glass and endcaps not included
- › Easy to maintain



Polished Silver - 10'
MAT-SHS-10-PS

Polished Silver - 20'
MAT-SHS-20-PS



Matte Black - 10'
MAT-SHS-10-MB

Matte Black - 20'
MAT-SHS-20-MB



Brushed Silver
MAT-ECSSHS-BS



Matte Black
MAT-ECSSHS-MB



Polished Silver
MAT-ECSSHS-PS

Endcap for 40×30mm Square Stainless Steel Handrail



Brushed Silver
MAT-S90JSSH-BS



Matte Black
MAT-S90JSSH-MB



Polished Silver
MAT-S90JSSH-PS

90 Degree Joiner for Horizontal Square Stainless Steel Handrail



Brushed Silver
MAT-S180JSSH-BS



Matte Black
MAT-S180JSSH-MB



Polished Silver
MAT-S180JSSH-PS

180 Degree Joiner for Horizontal Square Stainless Steel Handrail



Brushed Silver
MAT-SAJSSH-BS



Matte Black
MAT-SAJSSH-MB



Polished Silver
MAT-SAJSSH-PS

Stainless Steel Square Adjustable Horizontal Joiner



Brushed Silver
MAT-SAJSSV-BS



Matte Black
MAT-SAJSSV-MB



Polished Silver
MAT-SAJSSH-PS

Stainless Steel Square Adjustable Vertical Joiner



Brushed Silver
MAT-WBFPSSH-BS



Matte Black
MAT-WBFPSSH-MB



Polished Silver
MAT-WBFPSSH-PS

Wall Bracket with Two Fixing Points for 40×30mm Square Stainless Steel Handrail



Brushed Silver
MAT-WBSSH-BS



Matte Black
MAT-WBSSH-MB



Polished Silver
MAT-WBSSH-PS

Wall Bracket for 40×30mm Square Stainless Steel Handrail



ATLAS

ATL-GR1213-10-MB
ATL-GR1213-20-MB

Glass Rubber for 1/2" (12-12.76 mm) Thick Glass Panels



ATLAS

ATL-GR1315-10-MB
ATL-GR1315-20-MB

Glass Rubber for 3/8" (13-15 mm) Thick Glass Panels



ATLAS

ATL-GR1518-10-MB
ATL-GR1518-20-MB

Glass Rubber for 1/2" (15-17.52 mm) Thick Glass Panels



ATLAS

ATL-GR2022-10-MB
ATL-GR2022-20-MB

Glass Rubber for 3/8" (20.76-21.52 mm) Thick Glass Panels

AGENA

42mm Round Stainless Steel Handrail

The Agena is a round shaped handrail system designed to work in tandem with our spigot and channel/base shoe frameless glass railing systems. It is made of the highest grade 2205 duplex stainless steel giving it a sleek and streamlined aesthetic to minimize visual impact. Available in the same premium finishes to match your spigots or channel/base shoe.



Brushed Silver - 10'
AGE-SHR42-10-BS

Brushed Silver - 20'
AGE-SHR42-20-BS

CORONA SQUARE HANDRAIL FEATURES

- › Suitable for 1/2" - 7/8" (12-21.52 mm) glass
- › Comes in 10 or 20 ft. (3048 or 6100 mm) but can be cut to any length
- › FastFit design for easy installation
- › Streamlined design for minimal visual impact
- › No welding required
- › Glass and endcaps not included
- › Easy to maintain



Polished Silver - 10'
AGE-SHR42-10-PS

Polished Silver - 20'
AGE-SHR42-20-PS



Matte Black - 10'
AGE-SHR42-10-MB

Matte Black - 20'
AGE-SHR42-20-MB



Endcap for 42mm Round
Stainless Steel Handrail



90 Degree Joiner for Horizontal
Round Stainless Steel Handrail



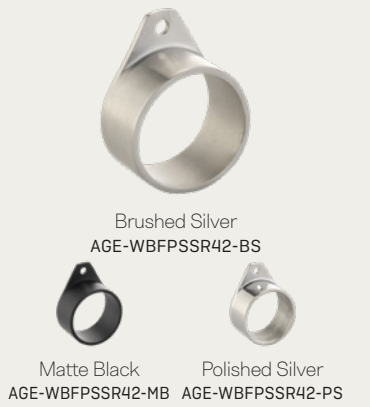
180 Degree Joiner for
Horizontal Round Stainless
Steel Handrail



Stainless Steel Round
Adjustable Horizontal Joiner



Stainless Steel Round
Adjustable Vertical Joiner



Wall Bracket with Fixing Point
for 42mm Round Stainless
Steel Handrail



Wall Bracket for 42mm Round
Stainless Steel Handrail

	ATLAS ATL-GR1213-10-MB ATL-GR1213-20-MB	Glass Rubber for 1/2" (12-12.76 mm) Thick Glass Panels
	ATLAS ATL-GR1315-10-MB ATL-GR1315-20-MB	Glass Rubber for 3/8" (13-15 mm) Thick Glass Panels
	ATLAS ATL-GR1518-10-MB ATL-GR1518-20-MB	Glass Rubber for 1/2" (15-17.52 mm) Thick Glass Panels
	ATLAS ATL-GR2022-10-MB ATL-GR2022-20-MB	Glass Rubber for 3/8" (20.76-21.52 mm) Thick Glass Panels

Steel Posts



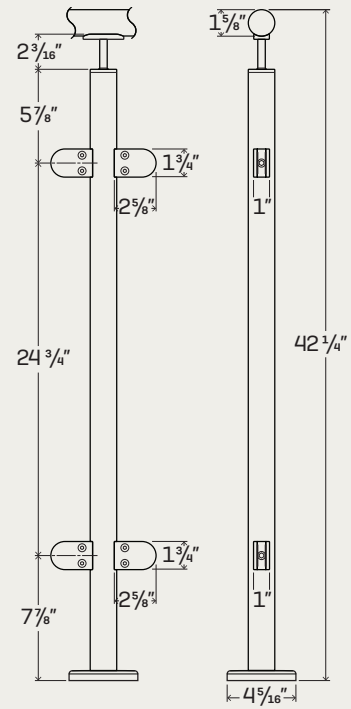
CALIBAN

Steel Post Glass Railing System

When durability is paramount, you can rely on the Caliban Stainless Steel Post Glass Railing System. Comes with top saddle for easy handrail installation (handrail sold separately). Handrail is optional, however, in some cases, it may be necessary in order to meet height requirements. Glass panel and post/handrail requirements vary by area. Please consult local and regional building codes for specific glass panel and railing system requirements in your area before purchasing.



Stainless Steel Two-way Post
Brushed Silver
CAL-SPBP-2W-BS



CALIBAN STEEL POST FEATURES

- › Round shape post system in 316 stainless steel and Duplex 2205 components
- › Post height 38 1/2" (971.5mm) without saddle, 42 1/2" (1003mm) with saddle and handrail
- › 1 5/8" (42mm) diameter post with 2.55" x 1.75" D clamps
- › Post system suits 1/2" (12.76mm) glass
- › D Clamps Flow Drilled on Posts
- › Join 180°, 90° corner, and end posts available
- › All posts include top cap and handrail saddle



Stainless Steel One-way End Post
Brushed Silver
CAL-SPBP-1W-BS



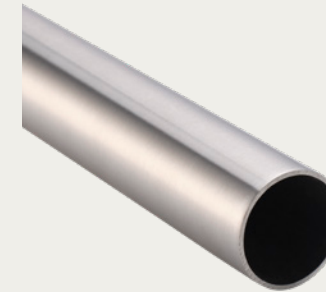
Stainless Steel 90-degree Post
Brushed Silver
CAL-SPBP-90-BS

CALIBAN

Steel Post System Handrail

CALIBAN STEEL HANDRAIL FEATURES

- › Round shape railing for Caliban post systems
- › Available in 10ft. (3048mm) or 20ft. (6100mm) lengths
- › 1 5/8" (42mm) diameter, 2mm thickness



Brushed Silver - 10'
CAL-SHPR-10-BS

Brushed Silver - 20'
CAL-SHPR-20-BS



Stainless Steel Post Round Adjustable Vertical Joiner

Brushed Silver
CAL-PRAJSSV-BS



Endcap for 42mm Round Stainless Steel Post Handrail

Brushed Silver
CAL-PECSSR42-BS



180 Degree Horizontal Joiner for Round Stainless Steel Post Handrail

Brushed Silver
CAL-PR180JSH-BS



90-degree Horizontal Joiner for Round Stainless Steel Post Handrail

Brushed Silver
CAL-PR90JSSH-BS



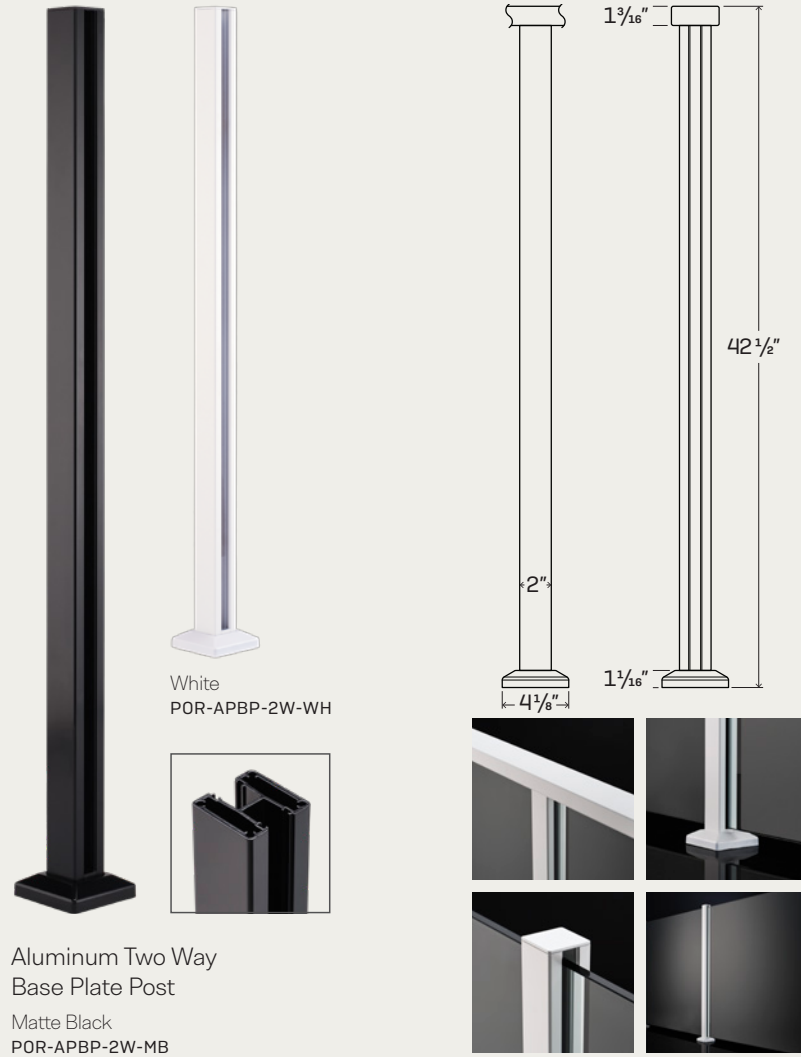
A close-up photograph of a white aluminum post and rail system. The image shows a thick, white, rectangular rail with a slightly rounded top edge, supported by a vertical post. The background is dark, making the white rail stand out. The lighting creates soft shadows and highlights the texture of the aluminum.

Aluminum Posts

PORTIA

Aluminum Post Glass Railing System

For a quality post handrail system that is fast and easy to install, look no further than the Portia. This streamlined aluminum post glass railing system is powder-coated to be corrosion-resistant and comes complete with fixing channels and base infill with a 4mm sitting block to make installation a breeze. Finish your fence with our easy two-part railing system (sold separately). Simply screw handrail undercapping to top of post and snap handrail onto secured undercapping. Glass panel and post/handrail requirements vary by area. Please consult local and regional building codes for specific glass panel and railing system requirements in your area before purchasing.



Aluminum Two Way
Base Plate Post
Matte Black
POR-APBP-2W-MB

PORTIA ALUMINUM POST FEATURES

- › Post height 41 1/4" with flat top cap, 42 1/2" (1003mm) with handrail
- › Post system suits 1/2" (12.76mm) glass
- › Deep glazing pockets allow for flexibility of installation
- › Concealed infill sitting block for setting glass
- › Baseplate one-piece cover plate included
- › Available in two colors, black and white powder coated finish



Aluminum One Way
Base Plate Post
Matte Black
POR-APBP-1W-MB

Aluminum 90°
Base Plate Post
Matte Black
POR-APBP-90-MB

Aluminum Wall Mount
Half Post
Matte Black
POR-APBP-2W-MB

PORTIA

Aluminum Post System Handrail

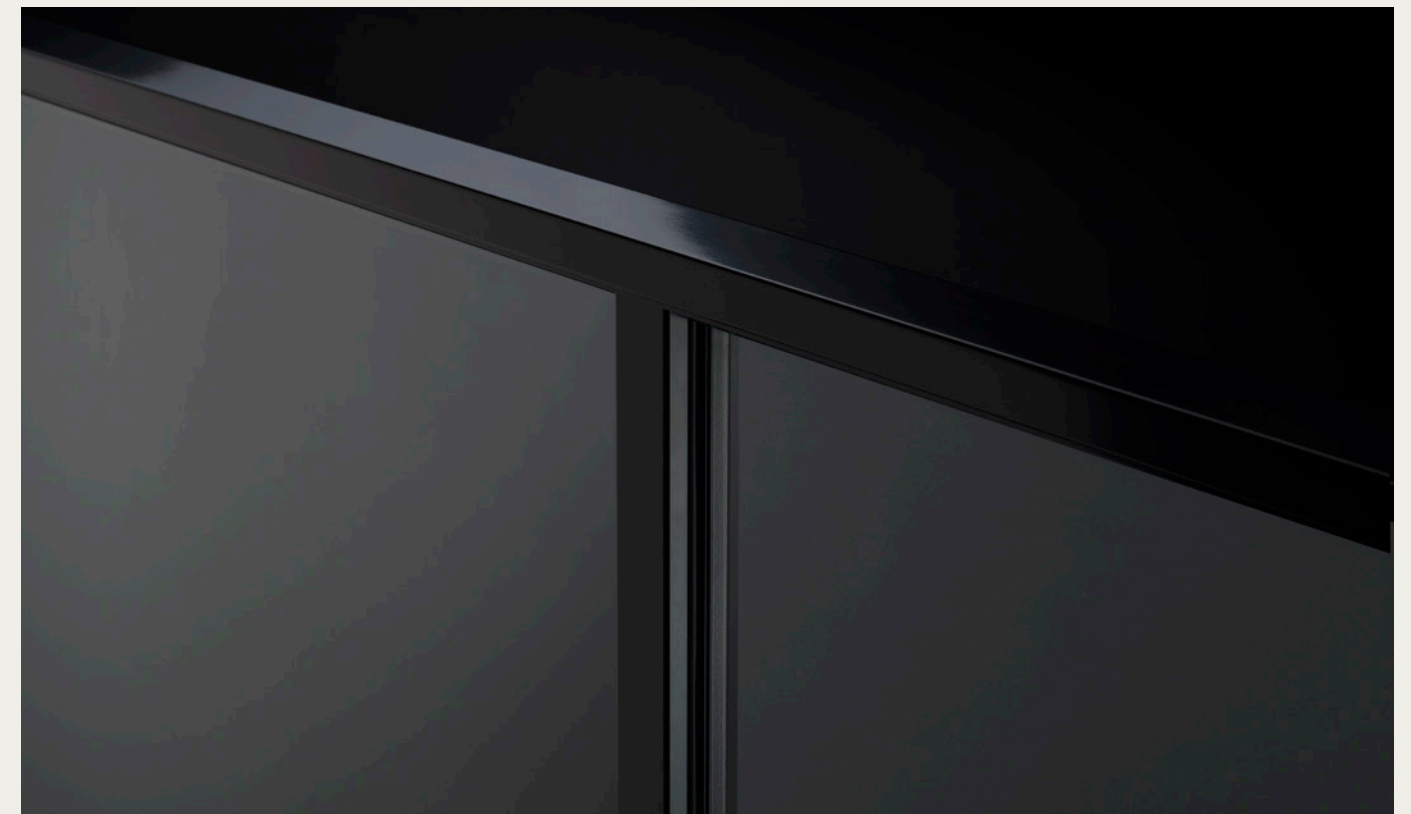
PORTIA ALUMINUM HANDRAIL FEATURES

- › Two-part handrail system includes top handrail that snaps onto bottom undercapping (screws to top of post)
- › Templated undercapping makes screwing to post fast and easy
- › Available in 10ft. and 19ft. lengths
- › Can be cut to fit exact enclosure side length
- › Rectangular profile in Alloy 6063 T6
- › Choose black or white powder coat finish



Matte Black - 10'
POR-AHPS-10-MB
Matte Black - 19'
POR-AHPS-19-MB

White - 10'
POR-AHPS-10-WH
White - 19'
POR-AHPS-19-WH



1/2" GLASS PANELS

- › Available in widths from 12" to 60"
- › Available in 36 1/2" and 39 3/4" heights
- › Panel thickness 1/2" (12.76mm)
- › Premium ANSI certified tempered safety glass
- › Panel front and back treated with EnduroShield

Highest Quality Glass Panels

All of our glass panels are manufactured in our own factory to make sure they retain our standards of creating the highest quality glass in market.



GLASS PANEL FEATURES

- › All Panels coated with Enduroshield
- › Available in three thickness: 1/2", 3/16" and 1/16"
- › Tempered Glass Manufactured to SGCC standards with ANSI Z97.1, 16 CFR 1201 & CGSB 12.1 certification.
- › Beveled edges
- › 3/16" and 1/16" are laminated for increased strength

36.5" Height	39.75" Height	Description
AP-12-36.5	AP-12-39.75	Monolithic Tempered Glass Panel— 1/2" Thickness (12.76mm)
AP-16-36.5	AP-16-39.75	Monolithic Tempered Glass Panel— 1/2" Thickness (12.76mm)
AP-20-36.5	AP-20-39.75	Monolithic Tempered Glass Panel— 1/2" Thickness (12.76mm)
AP-24-36.5	AP-24-39.75	Monolithic Tempered Glass Panel— 1/2" Thickness (12.76mm)
AP-26-36.5	AP-26-39.75	Monolithic Tempered Glass Panel— 1/2" Thickness (12.76mm)
AP-28-36.5	AP-28-39.75	Monolithic Tempered Glass Panel— 1/2" Thickness (12.76mm)
AP-30-36.5	AP-30-39.75	Monolithic Tempered Glass Panel— 1/2" Thickness (12.76mm)
AP-32-36.5	AP-32-39.75	Monolithic Tempered Glass Panel— 1/2" Thickness (12.76mm)
AP-34-36.5	AP-34-39.75	Monolithic Tempered Glass Panel— 1/2" Thickness (12.76mm)
AP-36-36.5	AP-36-39.75	Monolithic Tempered Glass Panel— 1/2" Thickness (12.76mm)
AP-38-36.5	AP-38-39.75	Monolithic Tempered Glass Panel— 1/2" Thickness (12.76mm)
AP-40-36.5	AP-40-39.75	Monolithic Tempered Glass Panel— 1/2" Thickness (12.76mm)
AP-42-36.5	AP-42-39.75	Monolithic Tempered Glass Panel— 1/2" Thickness (12.76mm)
AP-44-36.5	AP-44-39.75	Monolithic Tempered Glass Panel— 1/2" Thickness (12.76mm)
AP-46-36.5	AP-46-39.75	Monolithic Tempered Glass Panel— 1/2" Thickness (12.76mm)
AP-48-36.5	AP-48-39.75	Monolithic Tempered Glass Panel— 1/2" Thickness (12.76mm)
AP-50-36.5	AP-50-39.75	Monolithic Tempered Glass Panel— 1/2" Thickness (12.76mm)
AP-52-36.5	AP-52-39.75	Monolithic Tempered Glass Panel— 1/2" Thickness (12.76mm)
AP-54-36.5	AP-54-39.75	Monolithic Tempered Glass Panel— 1/2" Thickness (12.76mm)
AP-56-36.5	AP-56-39.75	Monolithic Tempered Glass Panel— 1/2" Thickness (12.76mm)
AP-58-36.5	AP-58-39.75	Monolithic Tempered Glass Panel— 1/2" Thickness (12.76mm)
AP-60-36.5	AP-60-39.75	Monolithic Tempered Glass Panel— 1/2" Thickness (12.76mm)

9/16" GLASS PANELS

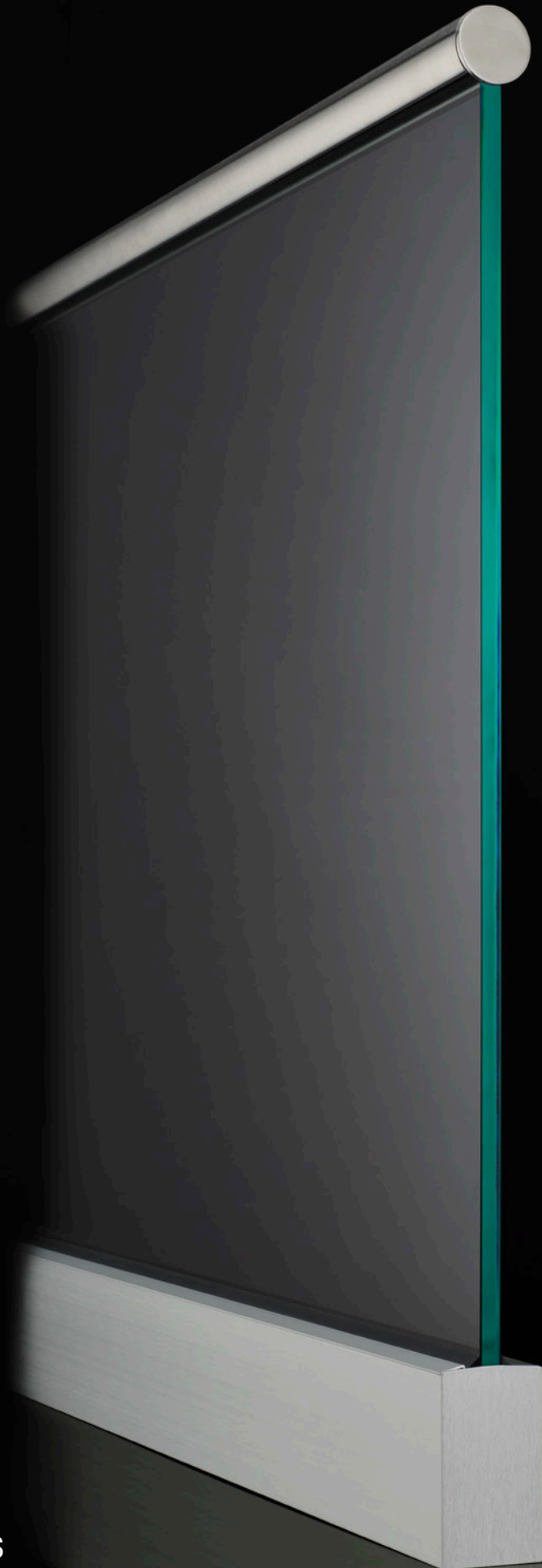
- › Laminated panel for increased strength
- › Available in widths from 12" to 60"
- › Available in 36 1/2" and 39 3/4" heights
- › Panel thickness 9/16" (14.29mm)
- › Premium ANSI certified tempered safety glass
- › Panel front and back treated with EnduroShield

36.5" Height	39.75" Height	Description
BP-12-36.5	BP-12-39.75	Laminated Tempered Glass Panel—9/16" Thickness (14.29mm)
BP-16-36.5	BP-16-39.75	Laminated Tempered Glass Panel—9/16" Thickness (14.29mm)
BP-20-36.5	BP-20-39.75	Laminated Tempered Glass Panel—9/16" Thickness (14.29mm)
BP-24-36.5	BP-24-39.75	Laminated Tempered Glass Panel—9/16" Thickness (14.29mm)
BP-26-36.5	BP-26-39.75	Laminated Tempered Glass Panel—9/16" Thickness (14.29mm)
BP-28-36.5	BP-28-39.75	Laminated Tempered Glass Panel—9/16" Thickness (14.29mm)
BP-30-36.5	BP-30-39.75	Laminated Tempered Glass Panel—9/16" Thickness (14.29mm)
BP-32-36.5	BP-32-39.75	Laminated Tempered Glass Panel—9/16" Thickness (14.29mm)
BP-34-36.5	BP-34-39.75	Laminated Tempered Glass Panel—9/16" Thickness (14.29mm)
BP-36-36.5	BP-36-39.75	Laminated Tempered Glass Panel—9/16" Thickness (14.29mm)
BP-38-36.5	BP-38-39.75	Laminated Tempered Glass Panel—9/16" Thickness (14.29mm)
BP-40-36.5	BP-40-39.75	Laminated Tempered Glass Panel—9/16" Thickness (14.29mm)
BP-42-36.5	BP-42-39.75	Laminated Tempered Glass Panel—9/16" Thickness (14.29mm)
BP-44-36.5	BP-44-39.75	Laminated Tempered Glass Panel—9/16" Thickness (14.29mm)
BP-46-36.5	BP-46-39.75	Laminated Tempered Glass Panel—9/16" Thickness (14.29mm)
BP-48-36.5	BP-48-39.75	Laminated Tempered Glass Panel—9/16" Thickness (14.29mm)
BP-50-36.5	BP-50-39.75	Laminated Tempered Glass Panel—9/16" Thickness (14.29mm)
BP-52-36.5	BP-52-39.75	Laminated Tempered Glass Panel—9/16" Thickness (14.29mm)
BP-54-36.5	BP-54-39.75	Laminated Tempered Glass Panel—9/16" Thickness (14.29mm)
BP-56-36.5	BP-56-39.75	Laminated Tempered Glass Panel—9/16" Thickness (14.29mm)
BP-58-36.5	BP-58-39.75	Laminated Tempered Glass Panel—9/16" Thickness (14.29mm)
BP-60-36.5	BP-60-39.75	Laminated Tempered Glass Panel—9/16" Thickness (14.29mm)

1 1/16" GLASS PANELS

- › Laminated panel for increased strength
- › Available in widths from 12" to 60"
- › Available in 36 1/2" and 39 3/4" heights
- › Panel thickness 1 1/16" (14.29mm)
- › Premium ANSI certified tempered safety glass
- › Panel front and back treated with EnduroShield

36.5" Height	39.75" Height	Description
CP-12-36.5	CP-12-39.75	Laminated Tempered Glass Panel—1 1/16" Thickness (17.46mm)
CP-16-36.5	CP-16-39.75	Laminated Tempered Glass Panel—1 1/16" Thickness (17.46mm)
CP-20-36.5	CP-20-39.75	Laminated Tempered Glass Panel—1 1/16" Thickness (17.46mm)
CP-24-36.5	CP-24-39.75	Laminated Tempered Glass Panel—1 1/16" Thickness (17.46mm)
CP-26-36.5	CP-26-39.75	Laminated Tempered Glass Panel—1 1/16" Thickness (17.46mm)
CP-28-36.5	CP-28-39.75	Laminated Tempered Glass Panel—1 1/16" Thickness (17.46mm)
CP-30-36.5	CP-30-39.75	Laminated Tempered Glass Panel—1 1/16" Thickness (17.46mm)
CP-32-36.5	CP-32-39.75	Laminated Tempered Glass Panel—1 1/16" Thickness (17.46mm)
CP-34-36.5	CP-34-39.75	Laminated Tempered Glass Panel—1 1/16" Thickness (17.46mm)
CP-36-36.5	CP-36-39.75	Laminated Tempered Glass Panel—1 1/16" Thickness (17.46mm)
CP-38-36.5	CP-38-39.75	Laminated Tempered Glass Panel—1 1/16" Thickness (17.46mm)
CP-40-36.5	CP-40-39.75	Laminated Tempered Glass Panel—1 1/16" Thickness (17.46mm)
CP-42-36.5	CP-42-39.75	Laminated Tempered Glass Panel—1 1/16" Thickness (17.46mm)
CP-44-36.5	CP-44-39.75	Laminated Tempered Glass Panel—1 1/16" Thickness (17.46mm)
CP-46-36.5	CP-46-39.75	Laminated Tempered Glass Panel—1 1/16" Thickness (17.46mm)
CP-48-36.5	CP-48-39.75	Laminated Tempered Glass Panel—1 1/16" Thickness (17.46mm)
CP-50-36.5	CP-50-39.75	Laminated Tempered Glass Panel—1 1/16" Thickness (17.46mm)
CP-52-36.5	CP-52-39.75	Laminated Tempered Glass Panel—1 1/16" Thickness (17.46mm)
CP-54-36.5	CP-54-39.75	Laminated Tempered Glass Panel—1 1/16" Thickness (17.46mm)
CP-56-36.5	CP-56-39.75	Laminated Tempered Glass Panel—1 1/16" Thickness (17.46mm)
CP-58-36.5	CP-58-39.75	Laminated Tempered Glass Panel—1 1/16" Thickness (17.46mm)
CP-60-36.5	CP-60-39.75	Laminated Tempered Glass Panel—1 1/16" Thickness (17.46mm)



FUTUREGLASS.US