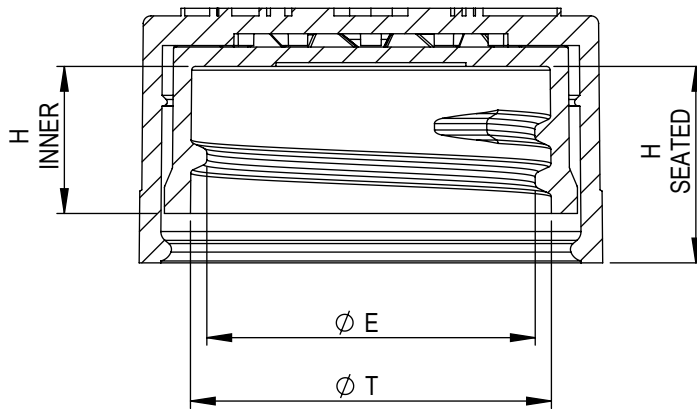
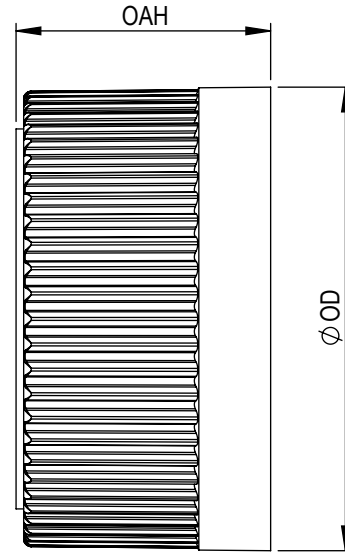
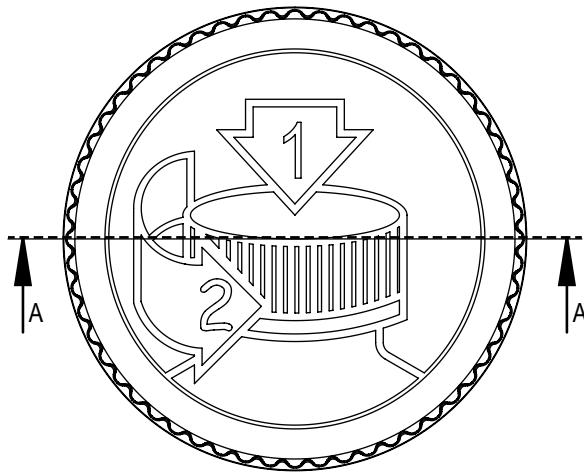


**STATIC TORQUE RECOMMENDATION: 10-18 in-lbs**

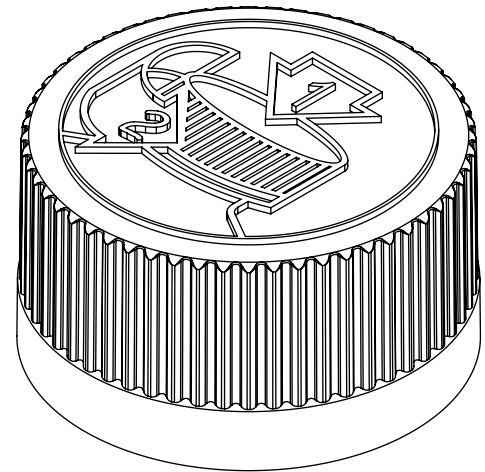
REQUIREMENT MAY VARY DEPENDING UPON CONTAINER MATERIAL, NECK FINISH, AND CAPPING EQUIPMENT

DIMENSIONS ENCLOSED IN ( ) INDICATE REFERENCE DIMENSIONS AND NO TOLERANCE LIMITS ARE ESTABLISHED

DIMENSIONS PRECEDED BY AN \*\*\* INDICATE THE DIMENSION IS PROCESS SENSITIVE. PROCESS SENSITIVE DIMENSIONS ARE VERIFIED TO BE WITHIN THE TOLERANCE LIMITS DURING THE PRODUCTION RUN. ALL REMAINING DIMENSIONS ARE VERIFIED AT PRODUCTION VALIDATION.



SECTION A-A  
SCALE 2 : 1



REFERENCE	DIMENSION	TOLERANCE	UNITS
E	0.865 [21.97]	±0.010 [0.25]	in [mm]
T	0.950 [24.13]	±0.010 [0.25]	in [mm]
H (SEATED)	0.517 [13.13]	REFERENCE	in [mm]
H (INNER)	0.388 [9.86]	±0.008 [0.20]	in [mm]
OAH	0.668 [16.97]	±0.015 [0.38]	in [mm]
OD	1.217 [30.91]	±0.015 [0.38]	in [mm]
PART WEIGHT	4.10	± 0.60	g

**DISCLAIMER**

This specification does not relieve the customer of their ultimate responsibility for the determination of the appropriate container. It is the customer's responsibility to select the appropriate packaging based upon all information at their disposal including the specific application, regulatory compliance, product compatibility and shipping requirements. WE HEREBY DISCLAIM AND EXCLUDE ANY EXPRESS OR IMPLIED WARRANTIES, INCLUDING WITHOUT LIMITATION THE IMPLIED WARRANTIES OF MERCHANTABILITY AND FITNESS FOR A PARTICULAR PURPOSE.

DISTRIBUTED BY:

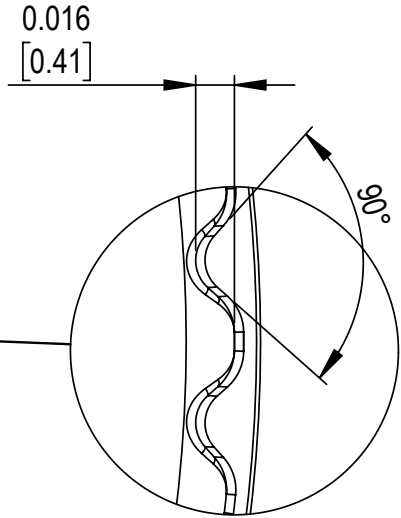
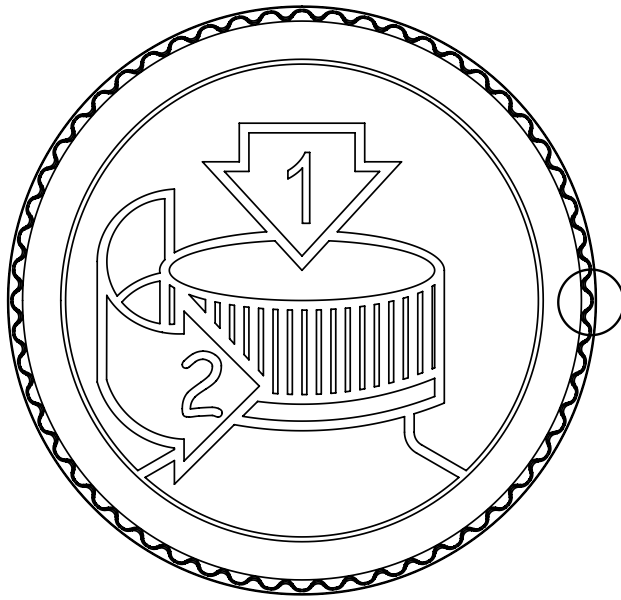


REF NO.:

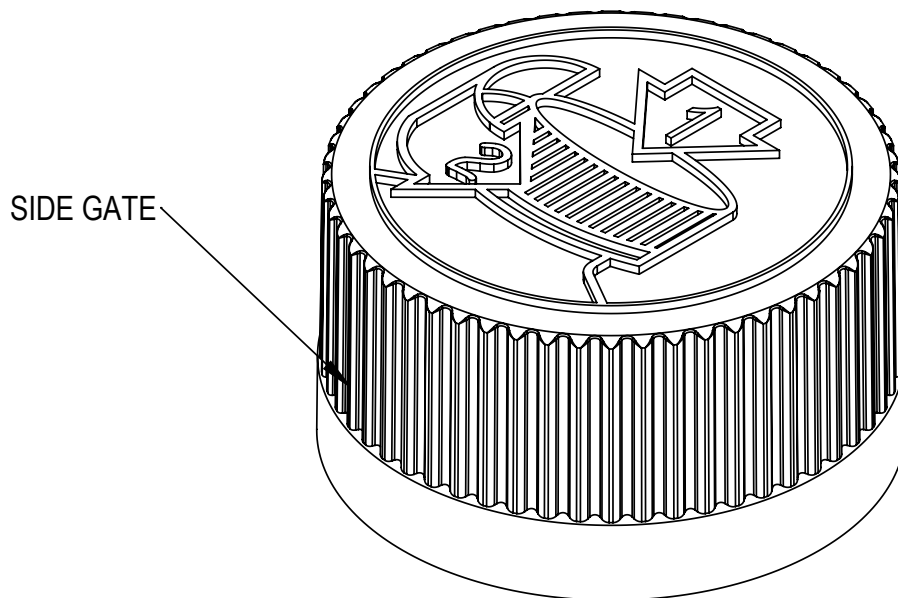
DWG-Q1654

DESCRIPTION:

24-400\_WHITE\_PP\_CHILD RESISTANT\_CAP\_SG75.020 PLAIN HEAT SEAL LINER\_@3200\_FOR HDPE PICTORIAL



SCALE 10 : 1  
(56) EQUISPACED RIBS



**DISCLAIMER**

This specification does not relieve the customer of their ultimate responsibility for the determination of the appropriate container. It is the customer's responsibility to select the appropriate packaging based upon all information at their disposal including the specific application, regulatory compliance, product compatibility and shipping requirements. WE HEREBY DISCLAIM AND EXCLUDE ANY EXPRESS OR IMPLIED WARRANTIES, INCLUDING WITHOUT LIMITATION THE IMPLIED WARRANTIES OF MERCHANTABILITY AND FITNESS FOR A PARTICULAR PURPOSE.

DISTRIBUTED BY:

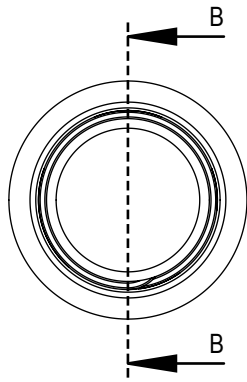


REF NO.:

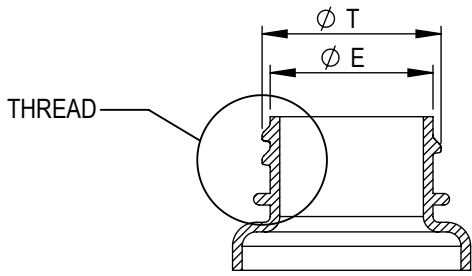
DWG-Q1654

DESCRIPTION:

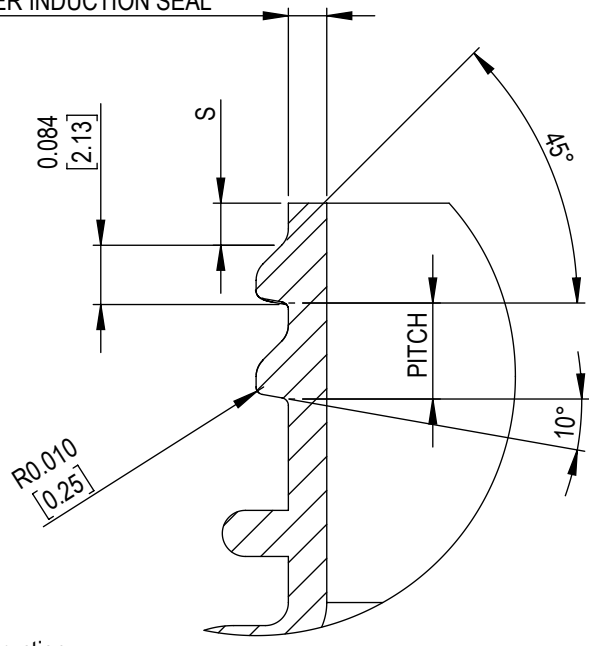
24-400\_WHITE\_PP\_CHILD RESISTANT\_CAP\_SG75.020  
PLAIN HEAT SEAL LINER\_@3200\_FOR HDPE PICTORIAL



[1.27mm]  
 .050 MINIMUM FLAT  
 RECOMMENDED FOR  
 PROPER INDUCTION SEAL

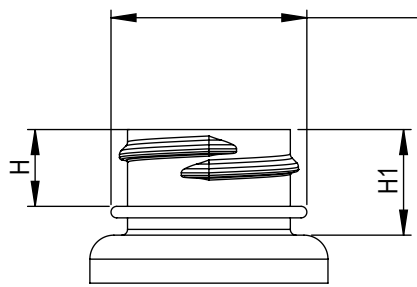


SECTION B-B



DETAIL THREAD  
 SCALE 4 : 1

Ø B  
 OPTIONAL construction:  
 Bead NOT required for  
 child resistant closure  
 function



REFERENCE	DIMENSION	TOLERANCE	UNITS
E	0.848 [21.54]	±0.008 [0.20]	in [mm]
T	0.932 [23.67]	±0.008 [0.20]	in [mm]
S	0.046 [1.17]	±0.015 [0.38]	in [mm]
H	0.400 [10.16]	MINIMUM	in [mm]
H1	0.550 [13.97]	MINIMUM	in [mm]
ØBEAD	1.020 [25.91]	MAXIMUM	in [mm]
TPI	8		in
PITCH	0.125 [3.16]		in [mm]

**DISCLAIMER**

This specification does not relieve the customer of their ultimate responsibility for the determination of the appropriate container. It is the customer's responsibility to select the appropriate packaging based upon all information at their disposal including the specific application, regulatory compliance, product compatibility and shipping requirements. WE HEREBY DISCLAIM AND EXCLUDE ANY EXPRESS OR IMPLIED WARRANTIES, INCLUDING WITHOUT LIMITATION THE IMPLIED WARRANTIES OF MERCHANTABILITY AND FITNESS FOR A PARTICULAR PURPOSE.

DISTRIBUTED BY:



REF NO.:

DWG-Q1654

DESCRIPTION:

24-400\_WHITE\_PP\_CHILD RESISTANT\_CAP\_SG75.020  
 PLAIN HEAT SEAL LINER\_@3200\_FOR HDPE PICTORIAL

<b>Product</b>	.020" Pulp SG-75M
<b>Scope</b>	Two piece white-lined pulp backed heat induction foil innerseal that will provide a tamper evident seal to PE containers.

<b>Composition</b>	<b>Material</b>	<b>Standard</b>	<b>Metric</b>	
	Pulp	0.020"	0.508mm	
	Wax	-	-	
	Foil	0.001"	0.025mm	
	PET Film	0.0005"	0.013mm	
	Heat Seal	0.0015"	0.038mm	

<b>FDA Status:</b> 21 CFR 177.1210	<b>Recommended Storage and Handling:</b> Refer to website
------------------------------------	---

<b>Drug Master File (DMF):</b> 3782	<b>EU / EP Reg.:</b>
-------------------------------------	----------------------

<b>GTR Oxygen:</b> Essentially Zero	<b>MVTR:</b> Essentially Zero
-------------------------------------	-------------------------------

**Sealing to glass containers:** Selig can not guarantee the performance or seal integrity of this materials when applied to any glass (treated or untreated) container. We suggest you contact your glass supplier for recommendations on glass treatments that may or may not improve performance or seal integrity.

**Print Location (if any):** On foil layer

Selig materials are compliant with limitation of heavy metals in packaging per CONEG & EU 94/62/EC, article 11.

MSDS's are not required as Selig is not a chemical manufacturer or distributor and our products are 'articles' intended for food packaging per 29 CFR 1910.1200 (HazCom).

The information contained within this product data bulletin is to be used as a general guide in determining which structures are offered for sealing to specific container materials. All of the information which we provide is reliable to the best of our knowledge, but the accuracy thereof is not guaranteed. We suggest that consumers determine suitability for their own application.

**DISCLAIMER**

This specification does not relieve the customer of their ultimate responsibility for the determination of the appropriate container. It is the customer's responsibility to select the appropriate packaging based upon all information at their disposal including the specific application, regulatory compliance, product compatibility and shipping requirements. WE HEREBY DISCLAIM AND EXCLUDE ANY EXPRESS OR IMPLIED WARRANTIES, INCLUDING WITHOUT LIMITATION THE IMPLIED WARRANTIES OF MERCHANTABILITY AND FITNESS FOR A PARTICULAR PURPOSE.

<b>DISTRIBUTED BY:</b> 	<b>REF NO.:</b> DWG-Q1654
<b>DESCRIPTION:</b> 24-400_WHITE_PP_CHILD RESISTANT_CAP_SG75.020 PLAIN HEAT SEAL LINER_@3200_FOR HDPE PICTORIAL	