

COMMERCIAL

SURFACES

INSIDE

INSPIRATION



VITL

FOUNDATION

INSPIRATION

INSIDE

SURFACES

COMMERCIAL

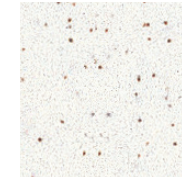
# FOUNDATION

Whether you're looking for tiles for your home or business, Foundation is the perfect option for you.

## Colors



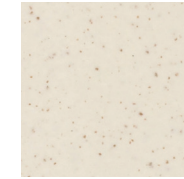
Ice  
VTL FOIC



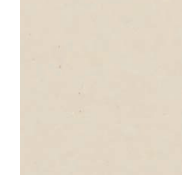
Lace Spec.  
VTL FOSL



Linen  
VTL FOLI



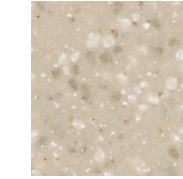
Linen Spec  
VTL FOLK



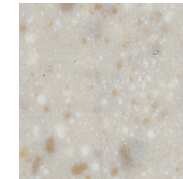
Dune  
VTL FODU



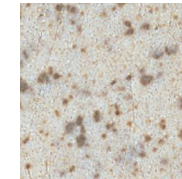
Buff  
VTL FOBF



Buff Spec.  
VTL FOBK



Enlightened  
VTL FOEN



Granite Spec  
VTL FOGN



Neutral  
VTL FONT



Stern  
VTL FOSN



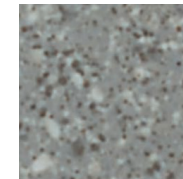
Smoke  
VTL FOSM



Smoke Spec.  
VTL FOSK



Storm  
VTL FOSR



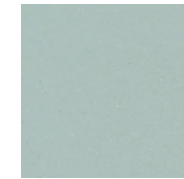
Storm Spec.  
VTL FOTK



Shadow  
VTL FOSH



Black  
VTL FOBL



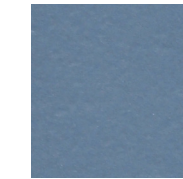
Renew  
VTL FORN



Crisp •  
VTL FOCR



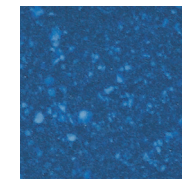
Ocean •  
VTL FOOC



Sky  
VTL FOSY



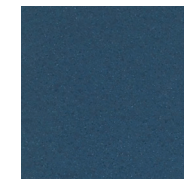
Blue  
VTL FOBU



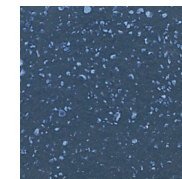
Blue Spec •  
VTL FOBS



Sea  
VTL FOSE



Indigo  
VTL FOIN



Indigo Spec  
VTL FOIK



Red •  
VTL FORE



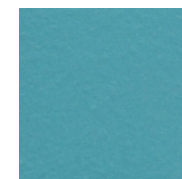
Orange •  
VTL FOOR



Yellow  
VTL FOYE



Pear  
VTL FOPE



Turquoise •  
VTL FOTU



Sage •  
VTL FOSG

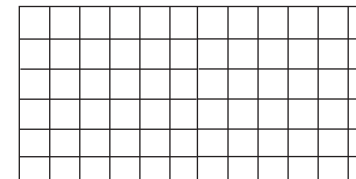


Ardor  
VTL FOAD

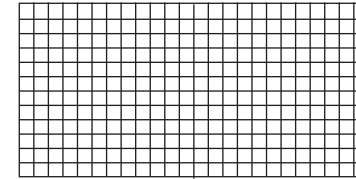


Regal •  
VTL FORG

• Made to Order



2" x 2" Mosaic



1" x 1" Mosaic

## Material

Unglazed Through-Body Porcelain

# FOUNDATION



V2 Slight Variation



V4 Substantial Variation



DCOF ≥0.42



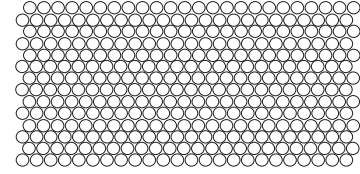
Water Absorption: <0.5%



Ready Ship



Made in USA

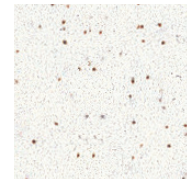


1" x 1" Penny Round Mosaic  
(10" x 22" dot-mounted sheet)

## Colors



Ice  
VTL FOIC



Lace Spec.  
VTL FOSL



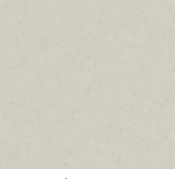
Linen  
VTL FOLI



Dune  
VTL FODU



Buff  
VTL FOBF



Neutral  
VTL FONT



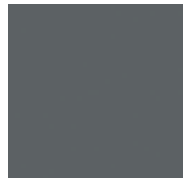
Stern  
VTL FOSN



Smoke  
VTL FOSM



Storm  
VTL FOSR



Shadow •  
VTL FOSH



Black  
VTL FOBL



Renew •  
VTL FORN



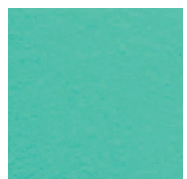
Sky •  
VTL FOSY



Blue •  
VTL FOBU



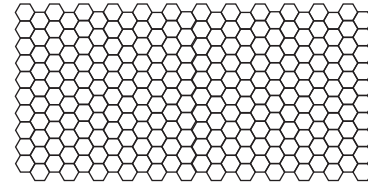
Sea •  
VTL FOSE



Turquoise •  
VTL FOTU

• Made to Order

## Shapes & Sizes



1" Hexagon  
(12" x 21" dot-mounted sheet)

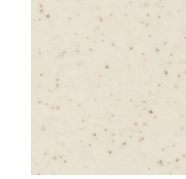
## Colors



Ice  
VTL FOIC



Linen  
VTL FOLI



Linen Spec.  
VTL FOLK



Dune  
VTL FODU



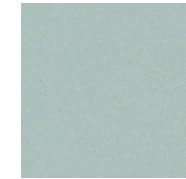
Neutral  
VTL FONT



Smoke  
VTL FOSM



Black  
VTL FOBL



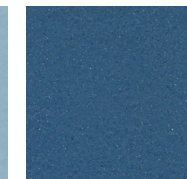
Renew  
VTL FORN



Crisp •  
VTL FOCR



Sky  
VTL FOSY



Sea  
VTL FOSE



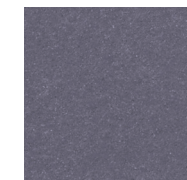
Indigo  
VTL FOIN



Sage •  
VTL FOSG



Ardor  
VTL FOAD



Regal •  
VTL FORG

• Made to Order



# FOUNDATION



V2 Slight  
Variation



V4 Substantial  
Variation



DCOF  
≥0.42



Water Absorption:  
<0.5%



Ready Ship



Made in USA

Story has always been important to us. It is what has driven us from the very beginning and it is what continues to inspire us today. Our story begins with porcelain tiles, surfaces that are both technically excellent and beautifully satisfying to the eye. Foundation is a testament to our commitment to creating products that are both functional and aesthetic.

The Foundation collection from VITL offers classic unglazed color-body porcelain in a brilliant palette offering of neutrals, vivid gem tones, blues and speckled pairings. Foundation transforms large-scale applications into works of art. The variety of mosaics and trim pieces is just what you need to complete any residential or commercial application project. So take a walk on the wild side and explore the possibilities today.

VITL

COMMERCIAL

SURFACES



Foundation Gradient Blend 1" Hex Mosaic



# FOUNDATION



V2 Slight  
Variation



V4 Substantial  
Variation



DCOF  
≥0.42



Water Absorption:  
<0.5%

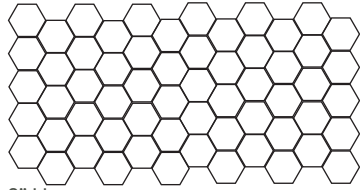


Ready Ship



Made in USA

## Shapes & Sizes



2" Hexagon  
(12" x 24.24" dot-mounted sheet)

## Colors



Ice  
VTL FOIC



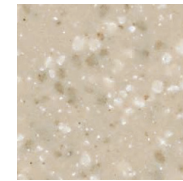
Linen  
VTL FOLI



Dune  
VTL FODU



Buff  
VTL FOBF



Buff Spec.  
VTL FOBK



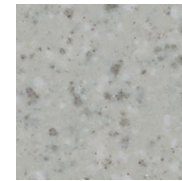
Neutral  
VTL FONT



Stern  
VTL FOSN



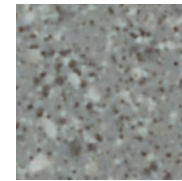
Smoke  
VTL FOSM



Smoke Spec.  
VTL FOSK



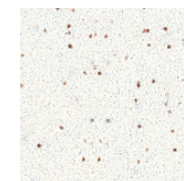
Storm  
VTL FOSR



Storm Spec.  
VTL FOTK



Black  
VTL FOBL



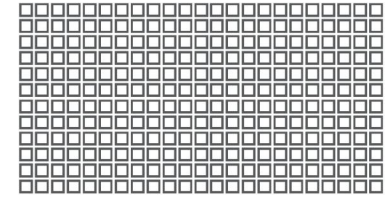
Lace Spec.  
VTL FOSL

## Material

Unglazed Through-Body Porcelain

## Blends and Patterns

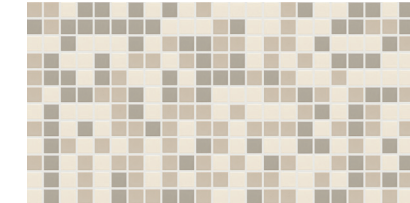
### Shapes & Sizes



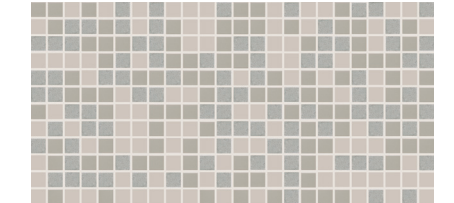
FOUNDATION  
1" x 1" MOSAIC MATTE  
12" x 24" x 6.35mm



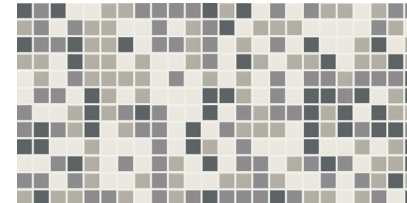
Unity Blend VTL FOUN



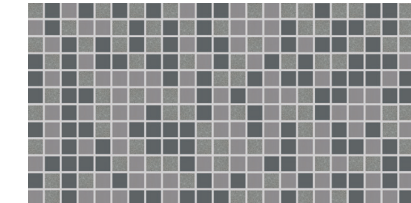
Alabaster Blend VTL FOAL



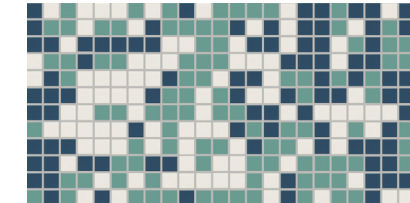
Steadfast Blend VTL FOSF



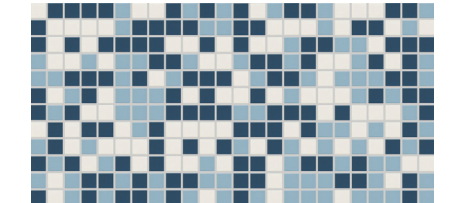
Fossil Blend VTL FOFO



Assured Blend VTL FOAS



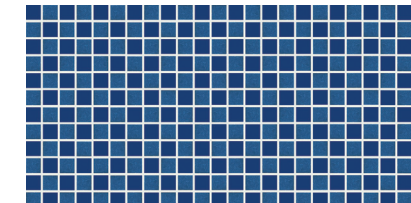
Ideal Blend VTL FOID



Calm Blend VTL FOCL



Dreamy Blend VTL FODR



Delight Blend VTL FODE

• Made to Order



# FOUNDATION



V2 Slight  
Variation



V4 Substantial  
Variation



DCOF  
≥0.42



Water Absorption:  
<0.5%

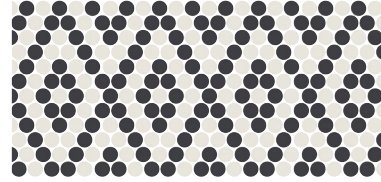


Ready Ship

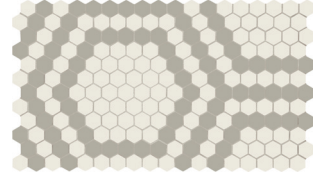


Made in USA

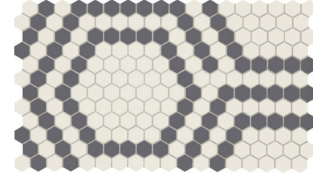
## Blends and Patterns



Black & White  
Diamond Penny Mosaic  
(10" x 22" dot-mounted sheet)  
VTL FOBW DIARND



Smoke & White  
Honeycomb Pattern Mosaic  
(10" x 22" dot-mounted sheet)  
VTL FOSW HONEY



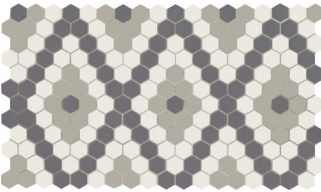
Black & White  
Honeycomb Pattern Mosaic  
(10" x 22" dot-mounted sheet)  
VTL FOBW HONEY



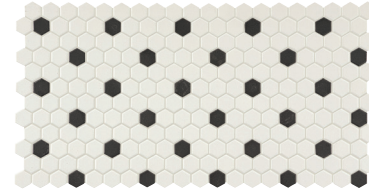
Gradient Blend  
(10" x 22" dot-mounted sheet)  
VTL FOGD DIAHEX



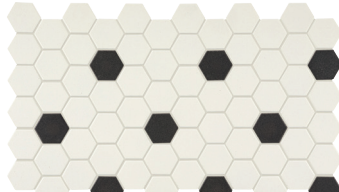
Smoke & White Diamond Pattern  
(10" x 22" dot-mounted sheet)  
VTL FOSW HEX



Gradient Blend Diamond Pattern  
(10" x 22" dot-mounted sheet)  
VTL FOGD HEX



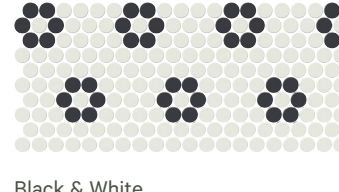
Black & White 1" Hexagon  
(10" x 22" dot-mounted sheet)  
VTL FOBW HEX



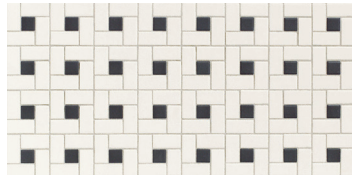
Black & White 2" Hexagon  
(10" x 22" dot-mounted sheet)  
VTL FOBW HEX2



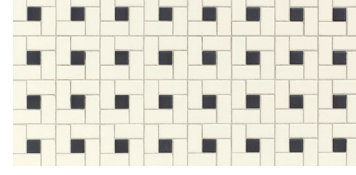
Black & White  
Penny Round Retro Dot  
(10" x 22" dot-mounted sheet)  
VTL FOBW PENNY



Black & White  
Penny Round Rosette  
(10" x 22" dot-mounted sheet)  
VTL FOBW FLORAL



Linen & Black Windmill Mosaic  
(12" x 24" dot-mounted sheet)  
VTL FOBL WIND



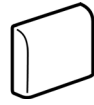
Black & White Windmill Mosaic  
(12" x 24" dot-mounted sheet)  
VTL FOBW WIND



Foundation Blue, Ice and Yellow

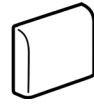


# TRIM



15/16" x 15/16" Bullnose Matte

- BUFF SPECKLE
- DUNE
- GREIGE SPECKLED
- GRANITE SPECKLE
- ICE
- LINEN
- SMOKE SPECKLE
- SPECKLED LACE
- SMOKE
- STORM SPECKLE



15/16" x 15/16" Bullnose Abrasive

- DUNE
- LINEN
- BEIGE SPECKLED



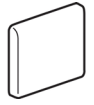
1" x 1" Bullnose Corner Matte

- ICE
- DUNE
- LINEN
- SPECKLED LACE
- BUFF SPECKLE
- GRANITE SPECKLE
- SMOKE
- SMOKE SPECKLE
- GREIGE SPECKLE
- STORM SPECKLE



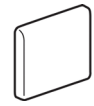
1" x 1" Bullnose Corner Abrasive

- DUNE
- LINEN
- BEIGE SPECKLED



2" x 2" Bullnose Matte

- ARDOR
- ARCTIC
- BUFF
- BUFF SPECKLE
- BLACK
- BLUE
- BLUE SPECKLE
- CAFE
- COFFEE
- CRISP
- CAFE SPECKLE
- CUSTARD
- DAFFODIL
- DUNE
- ENLIGHTENED
- FERN
- GREIGE
- GREIGE SPECKLED
- GRANITE SPECKLE
- ICE
- INDIGO
- INDIGO SPECKLE
- LINEN
- LINEN SPECKLE
- MARINE
- NUT
- NUT SPECKLE
- NEUTRAL
- OCEAN
- OLIVE
- PEAR
- REGAL
- RENEW
- SAND SPECKLE
- SEA
- SAGE
- SHADOW
- SIENNA
- SIENNA
- SMOKE SPECKLE
- SMOKE
- SPECKLED LACE
- STERN
- STORM
- STEEL
- SKY
- TEA
- STORM SPECKLED
- TURQUOISE
- VANILLA
- YELLOW



2" x 2" Bullnose Abrasive

- DUNE
- LINEN
- BUFF
- BUFF SPECKLE
- SAND SPECKLE
- SIENNA
- OCEAN
- MARINE
- STORM
- BLACK



2" x 2" Round Cap Corner Matte

- ICE
- DUNE
- LINEN
- SPECKLED LACE
- BUFF SPECKLE
- GRANITE SPECKLE
- GREIGE SPECKLE
- STORM SPECKLE
- SMOKE
- STORM SPECKLE



2" x 2" Bullnose Abrasive

- ICE
- DUNE
- LINEN
- LACE SPECKLED
- BEIGE SPECKLE
- GRANITE SPECKLE
- GREIGE SPECKLED
- STORM SPECKLED
- SMOKE
- SMOKE SPECKLED



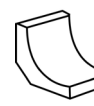
2" x 1" Stretcher Matte

- ICE
- DUNE
- LINEN
- SPECKLED LACE
- BUFF SPECKLE
- GRANITE SPECKLE
- GREIGE SPECKLE
- STORM SPECKLE
- SMOKE
- STORM SPECKLE



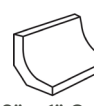
2" x 2" Round Cap In Corner Matte

- ICE
- DUNE
- LINEN
- SPECKLED LACE
- BUFF SPECKLE
- GRANITE SPECKLE
- GREIGE SPECKLE
- STORM SPECKLE
- SMOKE
- STORM SPECKLE



15/16" x 15/16" Cove Base Matte

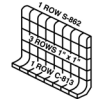
- ICE
- DUNE
- LINEN
- SPECKLED LACE
- BUFF SPECKLE
- GRANITE SPECKLE
- GREIGE SPECKLE
- STORM
- SMOKE
- STORM SPECKLE



2" x 1" Cove Base Matte

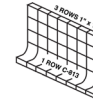
- ARDOR
- ARCTIC
- BUFF
- BUFF SPECKLE
- BLACK
- CAFE
- COFFEE
- CRISP
- CAFE SPECKLE
- CUSTARD
- DAFFODIL
- DUNE
- ENLIGHTENED
- FERN
- GREIGE
- GREIGE SPECKLED
- GRANITE SPECKLE
- ICE
- LINEN
- LINEN SPECKLE
- MARINE
- NUT
- NUT SPECKLE
- NEUTRAL
- OCEAN
- OLIVE
- RENEW
- SAND SPECKLE
- SAGE
- SHADOW
- SIENNA
- SMOKE SPECKLE
- SMOKE
- SPECKLED LACE
- STERN
- STORM
- STEEL
- SKY
- TEA
- STORM SPECKLE
- VANILLA

# TRIM



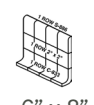
5" x 8" Round Top Built Up Cove Base Matte

- ICE
- DUNE
- LINEN
- LACE SPECKLED
- BEIGE SPECKLE
- GRANITE SPECKLE
- GREIGE SPECKLED
- STORM SPECKLED
- SMOKE
- SMOKE SPECKLED



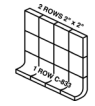
5" x 8" Round Top Built Up Cove Base Matte

- ICE
- DUNE
- LINEN
- LACE SPECKLED
- BEIGE SPECKLE
- GRANITE SPECKLE
- GREIGE SPECKLED
- STORM SPECKLED
- SMOKE
- SMOKE SPECKLED



6" x 8" Round Top Built Up Cove Base Matte

- ARDOR
- ARCTIC
- BUFF
- BUFF SPECKLE
- BLACK
- CAFE
- COFFEE
- CRISP
- CAFE SPECKLE
- CUSTARD
- DAFFODIL
- DUNE
- ENLIGHTENED
- FERN
- GREIGE
- GREIGE SPECKLED
- GRANITE SPECKLE
- ICE
- LINEN
- LINEN SPECKLE
- MARINE
- NUT
- NUT SPECKLE
- NEUTRAL
- OCEAN
- OLIVE
- RENEW
- SAND SPECKLE
- SAGE
- SHADOW
- SIENNA
- SMOKE SPECKLE
- SMOKE
- SPECKLED LACE
- STERN
- STORM
- STEEL
- SKY
- TEA
- STORM SPECKLE
- VANILLA



6" x 8" Square Top Built Up Cove Base Matte

- ARDOR
- ARCTIC
- BUFF
- BUFF SPECKLE
- BLACK
- CAFE
- COFFEE
- CRISP
- CAFE SPECKLE
- CUSTARD
- DAFFODIL
- DUNE
- ENLIGHTENED
- FERN
- GREIGE
- GREIGE SPECKLED
- GRANITE SPECKLE
- ICE
- LINEN
- LINEN SPECKLE
- MARINE
- NUT
- NUT SPECKLE
- NEUTRAL
- OCEAN
- OLIVE
- RENEW
- SAND SPECKLE
- SAGE
- SHADOW
- SIENNA
- SMOKE SPECKLE
- SMOKE
- SPECKLED LACE
- STERN
- STORM
- STEEL
- SKY
- TEA
- STORM SPECKLE
- VANILLA



1" x 1" Cove Base In Corner Round Matte

- ICE
- DUNE
- LINEN
- LACE SPECKLED
- BEIGE SPECKLE
- GRANITE SPECKLE
- GREIGE SPECKLED
- STORM SPECKLED
- SMOKE
- SMOKE SPECKLED



1" x 1" Cove Base In Corner Square Matte

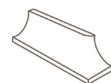
- ARDOR
- ARCTIC
- BUFF SPECKLE
- BLACK
- CAFE
- COFFEE
- CRISP
- CAFE SPECKLE
- CUSTARD
- DAFFODIL
- DUNE
- ENLIGHTENED
- FERN
- GRANITE SPECKLE
- GREIGE SPECKLE
- ICE
- LINEN
- LINEN SPECKLE
- MARINE
- NUT
- NUT SPECKLE
- NEUTRAL
- OCEAN
- OLIVE
- RENEW
- SAND SPECKLE
- SAGE
- SHADOW
- SIENNA
- SMOKE SPECKLE
- SPECKLED LACE
- SMOKE
- STERN
- STEEL
- SKY
- TEA
- STORM SPECKLE
- VANILLA

# TRIM



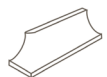
## 2" x 2" Universal Cove Base Corner Matte

- ARDOR
- GREIGE
- SAND SPECKLE
- BUFF
- GREIGE SPECKLED
- SAGE
- BUFF SPECKLE
- GRANITE SPECKLE
- SMOKE SPECKLE
- BLACK
- ICE
- SMOKE
- CAFE
- LINEN
- SPECKLED LACE
- COFFEE
- LINEN SPECKLE
- STERN
- CRISP
- MARINE
- STORM
- CAFE SPECKLE
- NEUTRAL
- STEEL
- CUSTARD
- OCEAN
- SKY
- DAFFODIL
- OLIVE
- STORM SPECKLE
- DUNE
- RENEW
- ENLIGHTENED



## 2" x 2" Universal Cove Base Corner Matte

- ARDOR
- FERN
- SAND SPECKLE
- ARCTIC
- GREIGE SPECKLED
- SAGE
- BUFF
- GRANITE SPECKLE
- SHADOW
- BUFF SPECKLE
- ICE
- SIENNA
- BLACK
- LINEN
- SMOKE SPECKLE
- CAFE
- LINEN SPECKLE
- SMOKE
- COFFEE
- MARINE
- SPECKLED LACE
- CRISP
- NUT
- STERN
- CAFE SPECKLE
- NUT SPECKLE
- STEEL
- CUSTARD
- NEUTRAL
- SKY
- DAFFODIL
- OCEAN
- TEA
- DUNE
- OLIVE
- STORM SPECKLE
- ENLIGHTENED
- RENEW
- VANILLA



## 2" x 1" Right Cove Base Corner Matte

- ARDOR
- FERN
- SAND SPECKLE
- ARCTIC
- GREIGE SPECKLED
- SAGE
- BUFF
- GRANITE SPECKLE
- SHADOW
- BUFF SPECKLE
- ICE
- SIENNA
- BLACK
- LINEN
- SMOKE SPECKLE
- CAFE
- LINEN SPECKLE
- SMOKE
- COFFEE
- MARINE
- SPECKLED LACE
- CRISP
- NUT
- STERN
- CAFE SPECKLE
- NUT SPECKLE
- STEEL
- CUSTARD
- NEUTRAL
- SKY
- DAFFODIL
- OCEAN
- TEA
- DUNE
- OLIVE
- STORM SPECKLE
- ENLIGHTENED
- RENEW
- VANILLA

# Field Tiles\*

SIZE	ACTUAL	THICKNESS	FINISH
1" Diamond Hexagon Mosaic	12" x 21"	6.35 mm	Matte
1" Diamond Penny Round Mosaic	10" x 22"	6.335 mm	Matte
1" Floral Penny Round Mosaic	10" x 22"	6.35 mm	Matte
1" Hexagon Mosaic	12" x 21"	6.35 mm	Matte
2" Hexagon Mosaic	12" x 24.24"	6.35 mm	Matte
1" Honeycomb Mosaic	12" x 21"	6.35 mm	Matte
1" x 1" Mosaic	12" x 24"	6.35 mm	Matte, Abrasive & Clearface Mounted
2" x 1" Brick Mosaic	12" x 24"	6.35 mm	Matte
2" x 1" Mosaic	12" x 24"	6.35 mm	Matte
2" x 2" Mosaic	12" x 24"	6.35 mm	Matte, Abrasive & Clearface Mounted
2" x 4" Mosaic	12" x 24"	6.35mm	Matte
1" Penny Round Mosaic	10" x 22"	6.35 mm	Matte

\*Not all colors/finishes available in all pieces and sizes. See [www.virginiatile.com](http://www.virginiatile.com) for details.

# Product Characteristics

TEST	MATTE	ABRASIVE
Breaking Strength	>300 lbs	>300lbs
Chemical Resistance	Resistant	Resistant
DCOF	≥0.42	≥0.42
Deep Scratch Resistance - Unglazed	Not Applicable	Not Applicable
Frost Resistance	Not Applicable	Not Applicable
Mohs Hardness - EN101	7-8	7-8
Water Absorption	<0.5%	<0.5%
Certifications	Not Applicable	Not Applicable
Country of Origin	USA	USA
Shade Variation Code	v2. v4	v2. v4

# Coordinating Trims\*

SIZE	ACTUAL	FINISH
15/16" x 15/16" Bullnose	.91" x .91"	Matte & Abrasive
1" x 1" Bullnose Corner	13" x 25"	Matte & Abrasive
2" x 2" Bullnose	1.9" x 1.9"	Matte & Abrasive
2" x 2" Round Cap Corner	13" x 25"	Matte
15/16" x 15/16" Stretcher	.91" x .91"	Matte
2" x 1" Stretcher	1.9" x 1.9"	Matte
2" x 2" Round Cap In Corner	13" x 25"	Matte
15/16" x 15/16" Cove Base	0.91" x 0.91"	Matte
2" x 1" Cove Base	1" x 2"	Matte
5" x 8" Round Top Built Up Cove Base	5" x 8"	Matte
5" x 8" Square Top Built Uo Cove Base	6" x 8"	Matte
6" x 8" Round Top Built Up Cove Base	6" x 8"	Matte
6" x 8" Square Top Built Up Cove Base	6" x 8"	Matte
1" x 1" Cove Base In Corner Round	13" x 25"	Matte

\*See [www.virginiatile.com](http://www.virginiatile.com) for additional trim pieces.

# Material

Unglazed Through-Body Porcelain & Unglazed Porecelain

# PORCELAIN CARE & MAINTENANCE

## INITIAL CLEANING

Proper cleaning after installation is essential for future maintenance. Remove excess grout using clean water and a sponge. If grout leaves behind a white haze, it can be wiped off using a clean cloth after grout has cured. Stubborn residue may require the use of a grout haze remover solution or neutral detergent. Thoroughly rinse the area with clean water and dry with a clean towel or wet vacuum.

## ROUTINE MAINTENANCE

Immediately wipe up any spills and clean the area using a damp cloth or sponge. Remove loose soil using a broom or vacuum. To remove stubborn surface debris, use a scraper or putty knife. Wipe the area with a PH-neutral and soapless cleaner. Rinse with clear water and wipe dry to prevent residue. Do not use cleaning wax, oil-based cleaners, ammonia, sealants, or products containing acid or bleach for routine maintenance. Avoid using abrasive cleaning products such as steel wool.



WHEN IT MUST BE GREAT.

WHEN IT MUST BE READY.

WHEN IT MUST BE EXTRAORDINARY.

WHEN IT MATTERS MOST.

VITL

Start your journey

Request samples.

[www.vitlsurfaces.com](http://www.vitlsurfaces.com)  
[samples@vitlsurfaces.com](mailto:samples@vitlsurfaces.com)

