



# MODA™ FIRE-RATED ICE MAKER SUPPLY BOX TECHNICAL SPECIFICATION

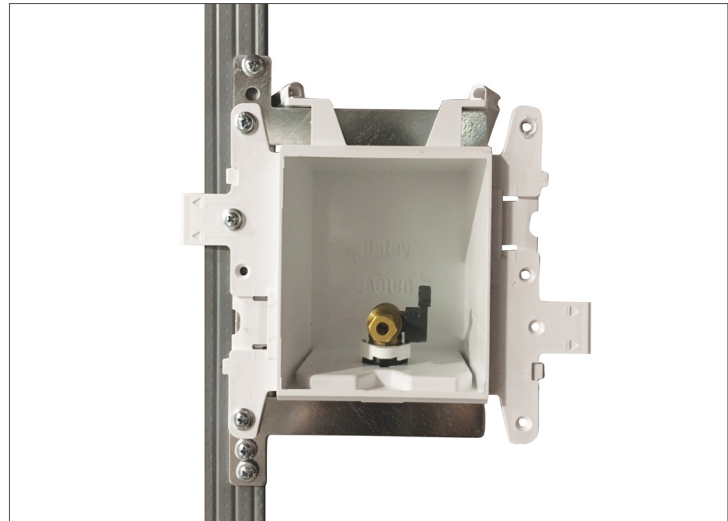
Job Name _____	Item # _____
Location _____	
Engineer _____	Contractor _____
PO # _____	Tag _____
Representative _____	

## SPECIFICATIONS

Oatey MODA™ fire-rated ice maker supply boxes shall be used in residential or commercial applications requiring a supply valve recessed in the wall. The MODA™ fire-rated ice maker box assembly contains a 1/4" OD compression valve pre-installed in a PVC box, with inter-locking wing flanges on each side. The wing flanges in conjunction with the metal bracket allow for direct to stud installation. L-shape brackets are included for support based on wall rating (see instruction sheet). Valves shall be a two-piece design, permitting field replacement, and shall be secured with a stainless steel retention clip. Valves are available with or without water hammer arrestors and shall be installed upright. The assembly shall include an emergency drain port for protection from tubing leaks.

## APPROVALS & LISTINGS

Valves	ASME A112.18.1 / CSA B125.1 NSF / ANSI 61 & 372
Water Hammer Arrestors	ASSE 1010
Boxes	IAPMO-Listed, PS-54
Listed with Massachusetts Board of Plumbing Listed by Warnock Hersey to meet: ASTM E814, UL 1479	
2-Hour Design	F-Rating: 2 Hour, T-Rating: 1-1/4 Hour
1-Hour Design	F-Rating: 1 Hour, T-Rating: 3/4 Hour
Listed by Warnock Hersey to meet: CAN/ULC S115	
2-Hour Design	FH Rating: 2 Hour, FTH Rating: 1-1/4 Hour
1-Hour Design	FH Rating: 1 Hour, FTH Rating: 3/4 Hour



## Accessory Components Included:



Faceplate



Intumescent Pad  
(Pre-installed)



Sticker Cover  
(For Debris Protection)

## FEATURES & MATERIALS

Outlet Box & Brackets	PVC
Valve Body	Forged Brass C46500 No Lead
Valve Retention Clip	Stainless Steel
Valve O-Rings	NSF Approved EPDM (2)
Metal Bracket and L-shape Brackets	16 Gauge Galvanized Steel
Arrestor Body	Copper (Type L)
Piston	Polypropylene with two NBR O-rings
Piston Lubrication	Dow Corning Molykote 111

## PERFORMANCE SPECIFICATIONS

Temperature Rating (Valve)	250° F/121° C
Max Testing Pressure (Valve)	125 psi

## DIMENSIONS

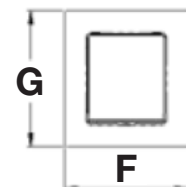
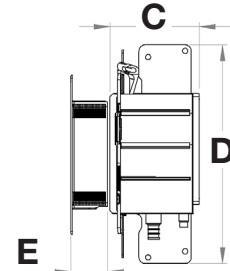
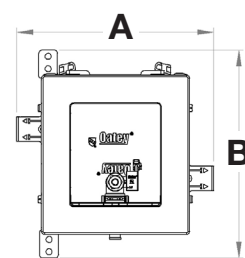
[A]:	Box Width	7.98"	[E]:	Faceplate Depth	1.25"
[B]:	Box Height	8.46"	[F]:	Faceplate Width	6.00"
[C]:	Box Depth	3.63"	[G]:	Faceplate Height	6.45"
[D]:	Metal Bracket Height	8.87"			



Metal Bracket (1)



L-shape  
Brackets (2)



Access BIM/Revit content through [www.oatey.com](http://www.oatey.com)



# MODA™ FIRE-RATED ICE MAKER SUPPLY BOX TECHNICAL SPECIFICATION

## PRODUCT SELECTOR

✓	Product Number	Description	Ctn. Qty.
<b>NO HAMMER ARRESTORS</b>			
	37378	MODA FR Ice Maker, Copper (Male), Single Pack	1
	37379	MODA FR Ice Maker, F1807 (Brass), Single Pack	1
	37381	MODA FR Ice Maker, F1960 (Brass), Single Pack	1
	37383	MODA FR Ice Maker, CPVC (Female), Single Pack	1
	37384	MODA FR Ice Maker, Push Connect, Single Pack	1
<b>HAMMER ARRESTORS</b>			
	37385	MODA FR Ice Maker, Copper (Male), Single Pack	1
	37386	MODA FR Ice Maker, F1807 (Brass), Single Pack	1
	37388	MODA FR Ice Maker, F1960 (Brass), Single Pack	1
	37390	MODA FR Ice Maker, CPVC (Female), Single Pack	1
	37391	MODA FR Ice Maker, Push Connect, Single Pack	1

Access BIM/Revit content through [www.oatey.com](http://www.oatey.com)