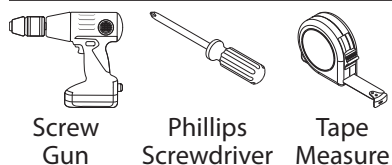




### IMPORTANT:

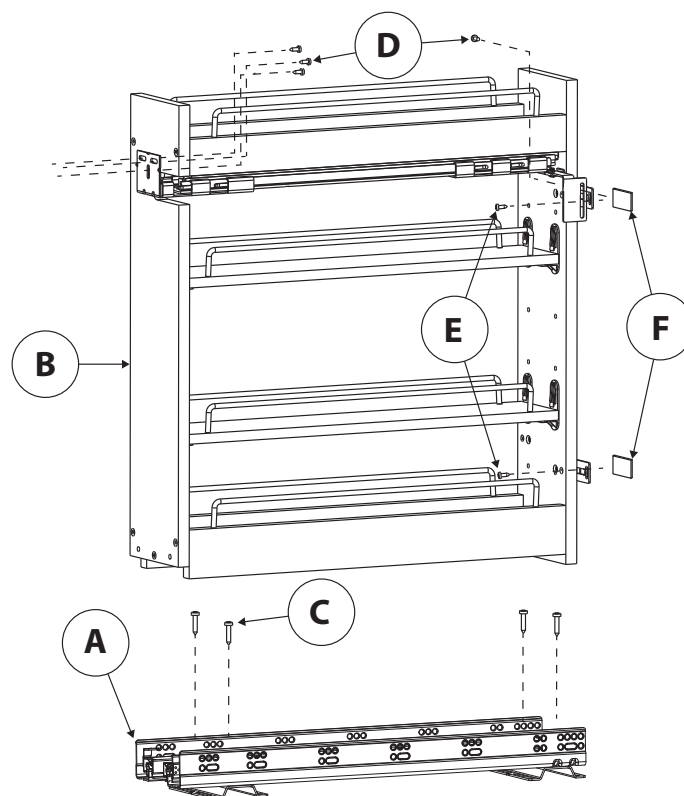
Before you begin, make sure you familiarize yourself with all the parts and fully read the instructions.

### TOOLS NECESSARY:



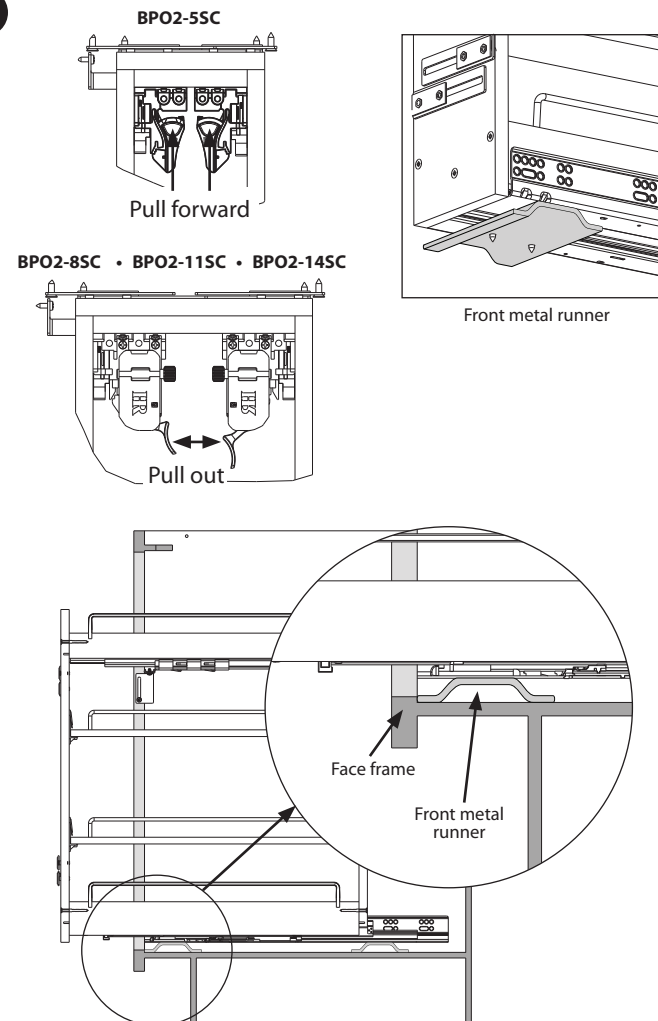
NOTE: If screw gun has a clutch, set to lowest setting so as not to over tighten and/or strip screws.

### PARTS IDENTIFICATION:



A	Mounting Base	1 pc
B	Base Pullout Unit	1 pc
C	#10 x 3/4" Pan Head Wood Screw	4 pcs
D	#8 x 5/8" Pan Head Wood Screw	4 pcs
E	#8 x 5/8" Flat Head Wood Screw	4 pcs
F	3M Double-sided Tape	4 pcs

1

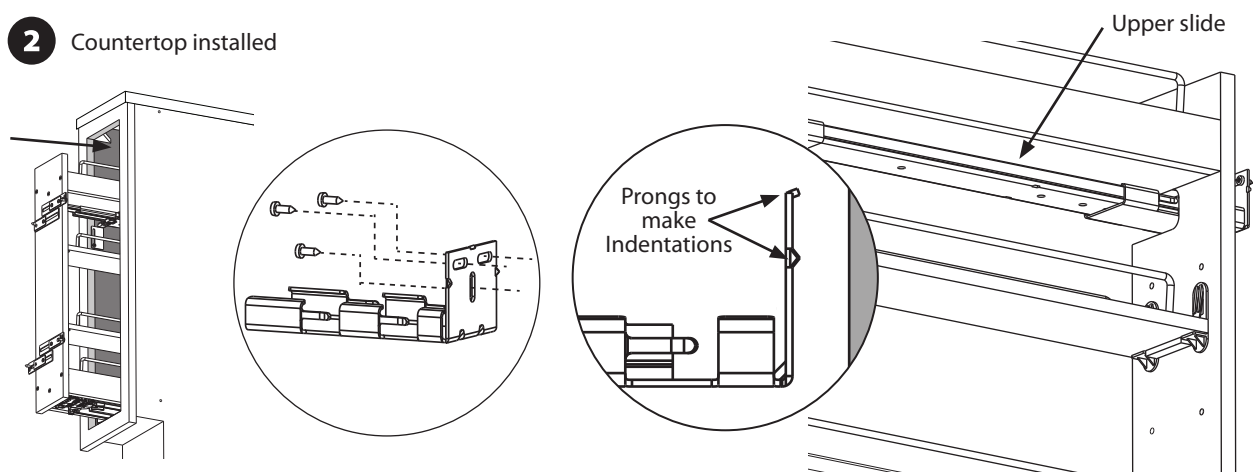


Remove unit (B) from mounting base (A) by releasing slide clips.

- In framed cabinets, center mounting base in opening making sure front metal runner is pulled tight against back of face frame.
- For frameless cabinets, metal runner needs to be set back 3/4".

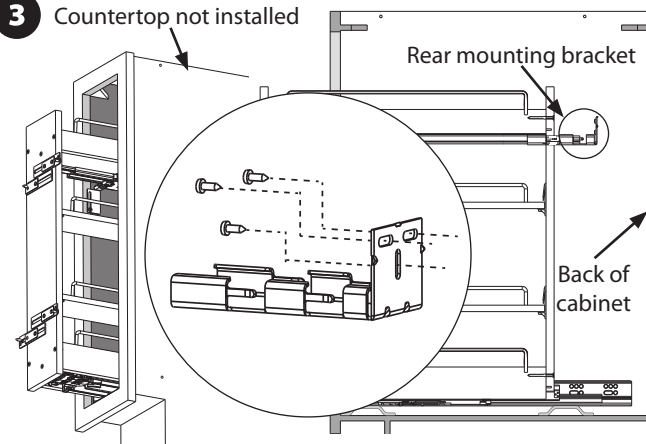
Secure mounting base by installing four (4) #10 x 3/4" Pan Head Wood Screws (C) provided into slots of metal runners. Re-install unit onto slides.

## 2 Countertop installed



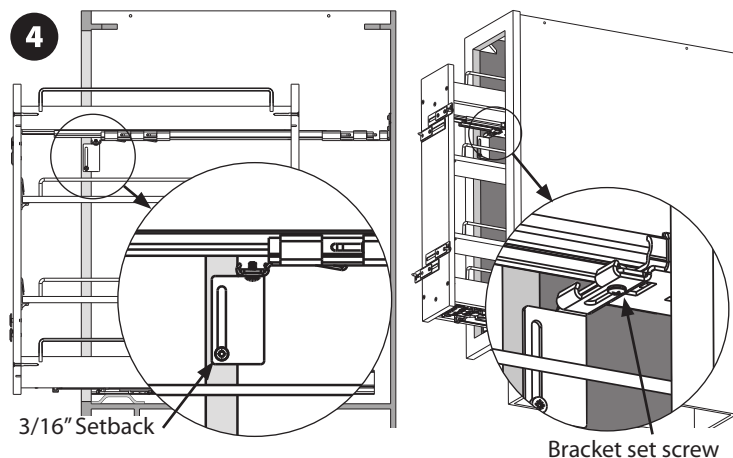
If countertop is installed, pull organizer partially open to gain access to upper slide. Firmly grasping upper slide, tap it against back of cabinet. Rear bracket should make small indentations in back of cabinet. Remove unit from base, and then slide rear mounting bracket off of slide. Align rear bracket prongs with indentation marks on rear of cabinet and secure with three (3) #8 x 5/8" Pan Head Wood Screws (D) in slots as shown. Re-install unit onto slides, making sure as you push it in cabinet, that top slide is properly seated into rear mounting bracket. Skip to Step 4.

## 3 Countertop not installed



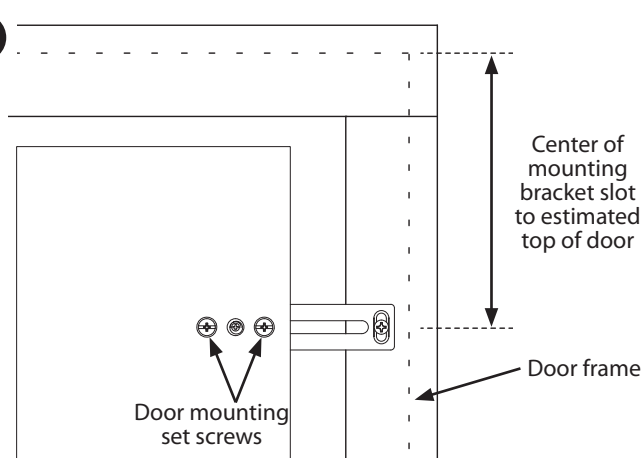
If countertop is not installed, pull organizer partially out to gain access to rear bracket from top of cabinet and install three (3) #8 x 5/8" Pan Head Wood Screws (D) provided in slots.

## 4



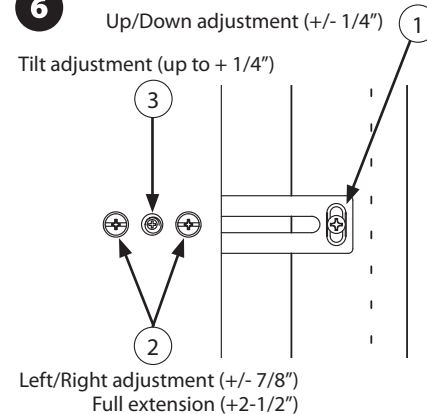
Pull top front mounting bracket into position on side of face frame (or cabinet) allowing for a 3/16" setback (shown left above). Firmly secure with one (1) #8 x 5/8" Pan Head Wood Screw (D). Make sure gap between unit and side of face frame is equal from top to bottom. Adjust accordingly and then securely tighten bracket set screw (shown right above).

## 5



Loosen door mounting set screws and slide bracket out to desired position to attach to door frame. Measure from center of slot on door mounting bracket to estimated top of door. Mark door with measurement for both top brackets. Attach 1 square of double-sided foam tape (F) to each door bracket. Close organizer, visually line up door, and press door firmly against organizer so that door sticks to tape on brackets. Carefully open door while keeping it attached to organizer.  
**Note: Some cabinet panels may be thinner than 1/2", so shorter screws may be needed to attach door to bracket. Check screw length before attaching.** Install door with four (4) #8 x 5/8 Flat Head Phillips Wood Screws (E) provided.

## 6



To adjust door up or down loosen door mounting screws (1). Adjust vertically and retighten. To adjust left or right, loosen both set screws (2). Adjust and retighten. To adjust tilt, loosen both set screws (2) and then turn tilt screw (3) clockwise to desired distance and then retighten set screws.