

FINISHES: GLOSSY

USAGE



MATERIAL



PRICING



SPECIAL FEATURES



WALL

## WALL TILE - FLAT



NU01 Pure White



NU02 Silver Lining



NU03 La Crema



NU04 Mocha



NU05 Navajo Blue



NU06 Midnight City

## WALL TILE - ARC



NU01 Pure White



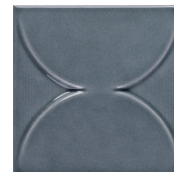
NU02 Silver Lining



NU03 La Crema



NU04 Mocha



NU05 Navajo Blue

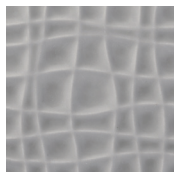


NU06 Midnight City

## WALL TILE - WEB



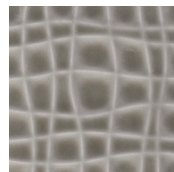
NU01 Pure White



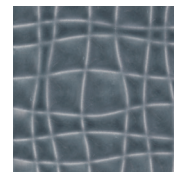
NU02 Silver Lining



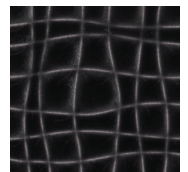
NU03 La Crema



NU04 Mocha

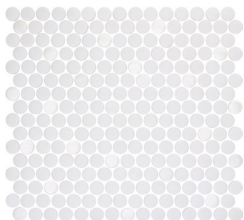


NU05 Navajo Blue

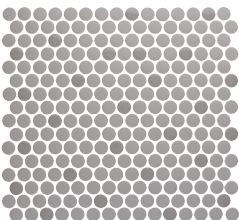


NU06 Midnight City

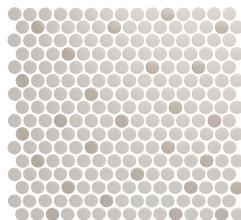
## GLASS 3/4 PENNY ROUND MOSAIC 12-1/2 X 11-1/2 SHEET



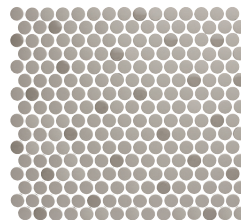
NU01 Pure White



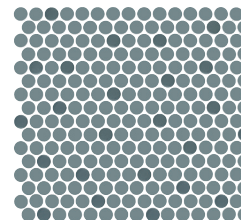
NU02 Silver Lining



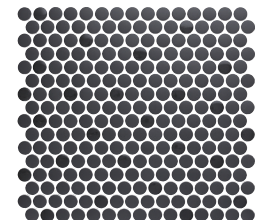
NU03 La Crema



NU04 Mocha



NU05 Navajo Blue



NU06 Midnight City



STAINPROOF



DENTPROOF



FIRE-RESISTANT



SIMPLECLEAN™

VISIT [MARAZZITILE.COM/WHYTILE](http://MARAZZITILE.COM/WHYTILE) FOR A COMPLETE LIST OF QUALIFICATIONS AND EXCLUSIONS.







LEARN MORE

FINISHES: GLOSSY

<b>USAGE</b>	<b>MATERIAL</b>	<b>PRICING</b>	<b>SPECIAL FEATURES</b>
 FLOOR  WALL  COUNTERTOP  SHOWER FLOOR  EXTERIOR FLOOR			 STEPWISE  TRUE EDGE  MADE IN THE U.S.A.  LARGE FORMAT  MOSAIC/DECO  ENCAUSTIC  ENCAUSTIC  PAVER  CUSTOMIZE


WALL

## SIZES

			Thickness	Sq. Ft./Carton	Pieces/Carton
	4 x 4 Wall Tile - Flat ↗	4" x 4" (10.00 cm x 10.00 cm)	5/16"	5.38	50
	4 x 4 Wall Tile - Arc ↗	4" x 4" (10.00 cm x 10.00 cm)	5/16"	5.38	50
	4 x 4 Wall Tile - Web ↗	4" x 4" (10.00 cm x 10.00 cm)	5/16"	5.38	50
	3/4 Glass Penny Round Mosaic * (Mesh-Mounted)	12-5/16" x 11-1/2" Sheet (31.30 cm x 29.00 cm Sheet)	1/4"	10.74	11

- ↗ Wall Tile: Flat, Arc and Web available in glazed ceramic only.
- \* Glass Penny Round Mosaics available in a blend of matte and gloss finishes only.

## TRIM

Description	Number	Size	Shape
Jolly	S-128J	1/2 x 8	

## APPLICATIONS

	Target DCOF wet	Suitable
Dry & Level - Interior Floor	N/A	
Wet & Level - Interior Floor	≥ 0.42	
Shower Floors (Residential or Light Commercial)	≥ 0.42	
Exterior Floor Applications (including patios, pool decking & other wet areas with minimal footwear)	≥ 0.60	
Ramps & Inclines	≥ 0.65	
Walls/Backsplashes	N/A	■
Countertops	N/A	
Pool Linings	N/A	■*

A DCOF value of ≥0.42 is the standard for tiles specified for level interior spaces expected to be walked upon when wet, as stated in ANSI A137.1-A326.3. For more information about DCOF and the DCOF AcuTest™, visit [marazzitile.com/DCOF](http://marazzitile.com/DCOF).


### APPLICATION NOTES:

Mosaics suitable for exterior applications in freezing and non-freezing climates, when proper installation methods are followed.

Wall tile suitable for exterior applications in non-freezing climates, when proper installation methods are followed.

\* Penny Round Mosaics Only.

## INSTALLATION

Grout Joint Recommendation	Shade Variation
Mosaic: 1/8" Wall: 1/16"	 Low Variation

## PERFORMANCE CHARACTERISTICS

	ASTM#	Wall Result	Glass Result
Water Absorption	C373	< 20%	< 0.5%
Breaking Strength	C648	120 -230 lbs	> 100 lbs
Scratch Hardness	MOHS	4.0 - 6.0	4.0
Chemical Resistance	C650	Resistant	Resistant

For additional information on test results, visit us at: [marazzitile.com/information/TestResults](http://marazzitile.com/information/TestResults).

## NOTES

Since there are variations in all fired ceramic and natural products, tile and trim supplied for your particular installation may not match samples. Final confirmation should be made from actual tiles and trim prior to installation. Manufactured in accordance with ANSI A137.1 standards.

Since there are variations in all glass products, tile and trim supplied for your particular installation may not match samples. Final confirmation should be made from actual tiles and trim prior to installation. Manufactured in accordance with ANSI A137.2 standards.

For additional information refer to "Factors to Consider" at: [marazzitile.com/Factors](http://marazzitile.com/Factors).

Special care should be taken when grouting with dark pigmented colors. A grout release is recommended to prevent finely powdered pigments from lodging in the pores of the surface. Use of a latex modified thin-set is recommended for installation.

Glass Penny Round Mosaic: Use of a white latex modified thin-set is recommended for installation. For more information, visit [marazzitile.com](http://marazzitile.com).