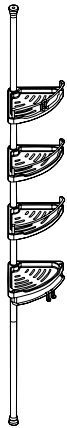
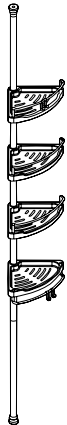


STEP 8: Repeat step 5 to add the final shelf onto the pole.



STEP 9: Attach the telescopic pole (4) to the end of the assembled pole.

STEP 10: Place the assembled caddy into the desired location and adjust the telescopic pole to ensure that the caddy is the correct size.



STEP 11: Rotate the telescope pole in a clockwise direction to tighten and rotate the pole in an anticlockwise direction to loosen.



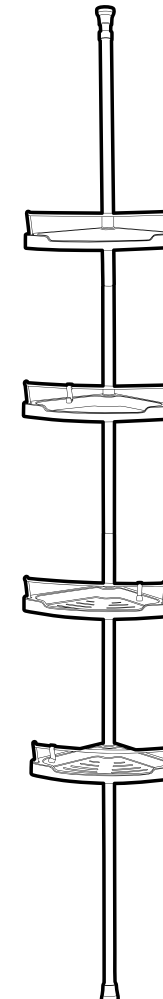
NOTE: Avoid forcing the caddy into position, as this may cause damage. Check the caddy regularly to ensure it remains secure and tight. The telescopic pole includes a spring for added tension to ensure a secure fit.

Beldray Guarantee

Subject to the care and use being followed, the Beldray guarantee promises to replace, substitute or refund any product that fails due to faulty workmanship or materials. This guarantee does not cover any damage caused by accident or misuse and is in addition to your statutory rights. Should any defects due to faulty workmanship or materials appear within 12 months from the date of purchase, please return the goods with proof of purchase to the retailer. For any queries outside of the initial 12 months of purchase, visit www.beldray.com. To be eligible for the guarantee, please retain your proof of purchase.

User manual

Shower caddy



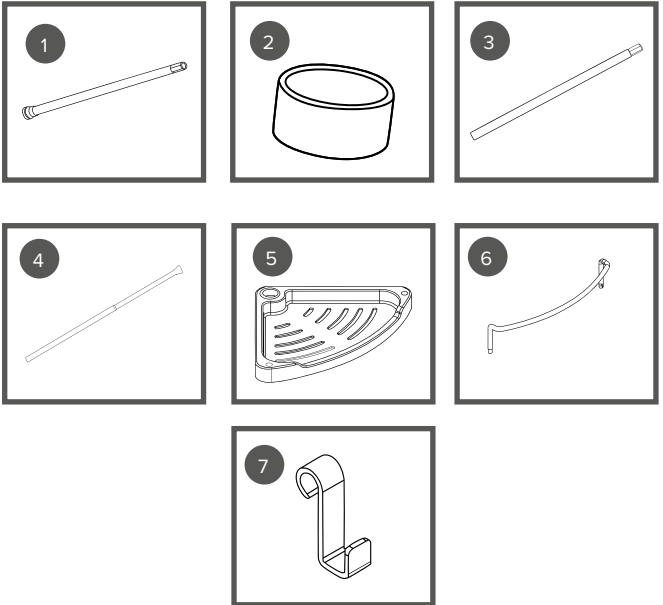
Manufactured by:
Ultimate Products UK Ltd.,
Victoria Street, Manchester OL9 0DD. **UK.**
Ultimate Products Europe Ltd.,
19 Baggot Street Lower, Dublin D02 X658. **ROI.**

MADE IN CHINA.

© Beldray trademark. All rights reserved.
CD280725/MD000000/V1

beldray[®]
Est.1872

Description of parts



- 1. End pole
- 2. Securing band (qty. 4)
- 3. Middle pole (qty. 2)
- 4. Telescopic pole
- 5. Shelf (qty. 4)
- 6. Shelf rail (qty. 4)
- 7. Hanging hook (qty. 4)

Please retain instructions for future reference.

Before first use

Remove all packaging from the components.
Separate all parts from the poles.



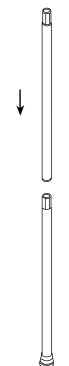
CAUTION: Keep out of the reach of children. Not suitable for use with bleach. Max. load is 3 kg per shelf, 12 kg total.

Care and maintenance

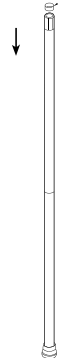
Wipe clean with a soft, damp cloth and allow to dry thoroughly.

Assembling the caddy

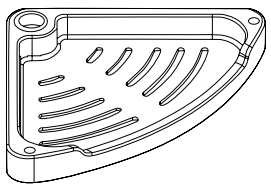
STEP 1: Insert the middle pole into the end pole (3 & 1).



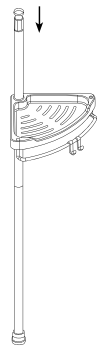
STEP 2: Slot a securing band (2) onto the upper half of the middle pole.



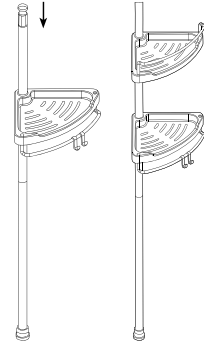
STEP 3: Insert the shelf rail (6) into the shelf (5) and then place the hanging hook (7) onto the shelf rail. Repeat for all shelves.



STEP 4: Slide a shelf (5) onto the assembled pole until it is on top of the securing band (2).



STEP 5: Add a securing band (2) on the end of the assembled pole and place a shelf (5) on top of the band.



STEP 6: Attach the other middle pole (3) to the assembled pole.

STEP 7: Repeat steps 2 and 4 to add the next shelf onto the pole.

