



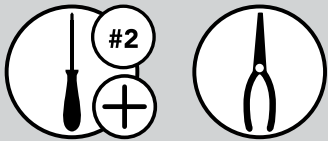
12400 Earl Jones Way
Louisville, KY 40299
rev-a-shelf.com
Customer Service: 800-626-1126



INSTALLATION INSTRUCTIONS

K-CUP WIRE ACCESSORY FOR 432 SERIES 3" WALL FILLERS

TOOLS REQUIRED:



ESTIMATED ASSEMBLY TIME:

15 MIN

CARE AND MAINTENANCE:

Clean with a damp cloth and wipe parts dry.



STEP 1

Remove the existing shelves from your 432 Wall Filler - needle nose pliers may be needed to remove the shelf pins (See Fig1)

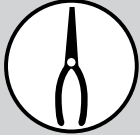
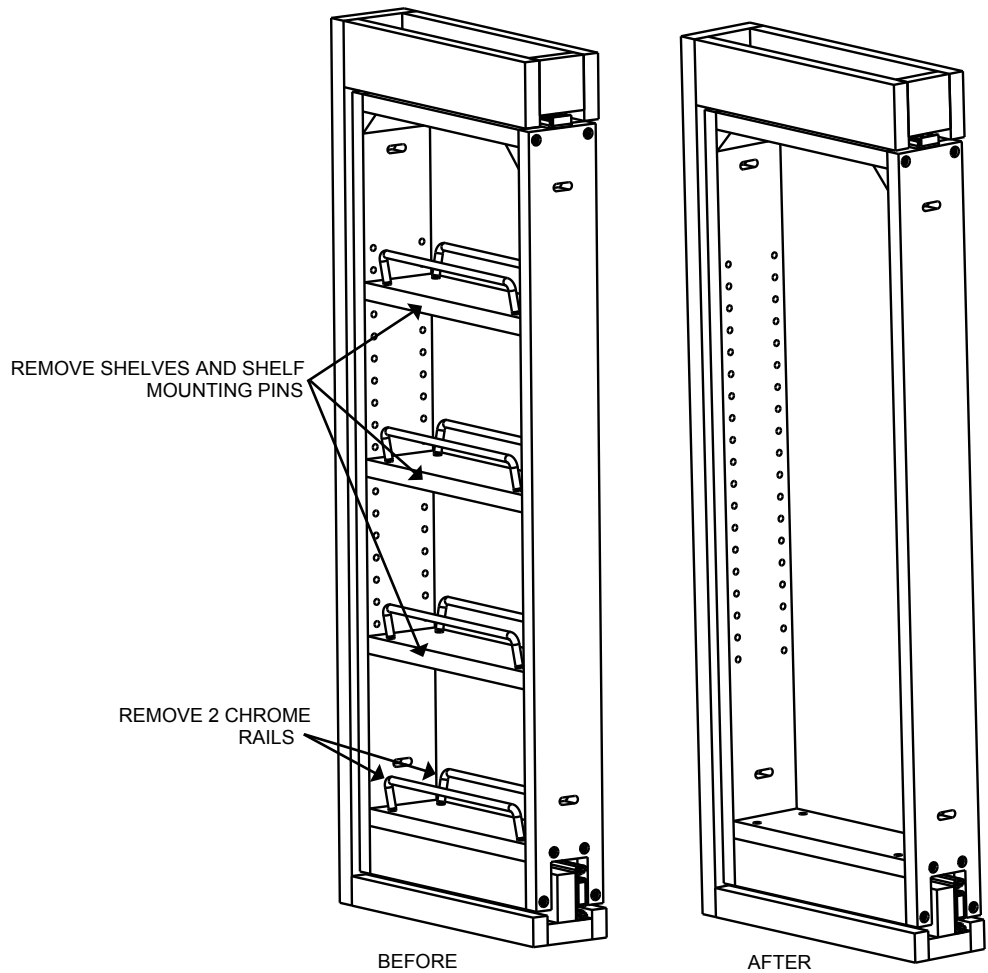


FIGURE 1



STEP 2

Attach the insert in your 3" wall 432 filler using the 4 brackets provided and the systems holes on your unit. (See Fig 2)

NOTE: if installing into a 432 WF that is 33" or taller, there will be enough space above the wire K-Cup rack to install or leave existing shelves. (See cover image for reference)

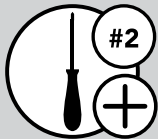
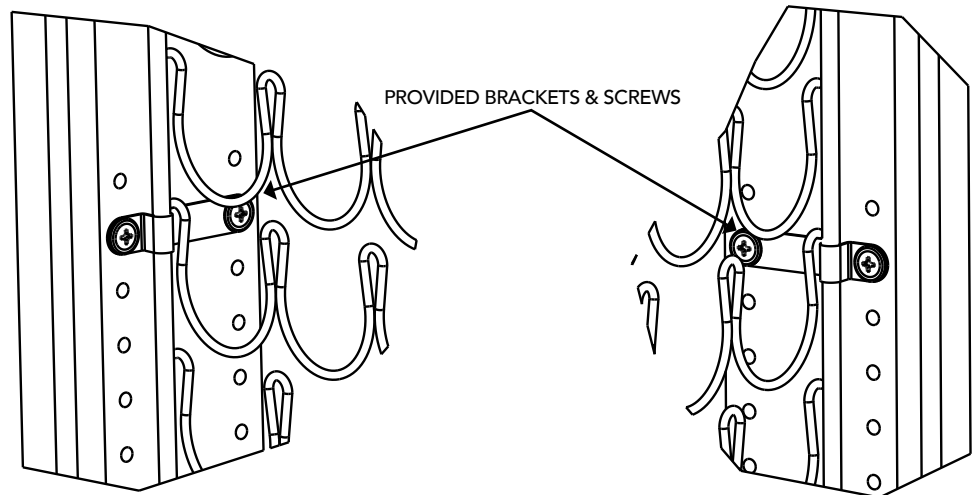


FIGURE 2



12400 Earl Jones Way
Louisville, KY 40299
rev-a-shelf.com
Customer Service: 800-626-1126