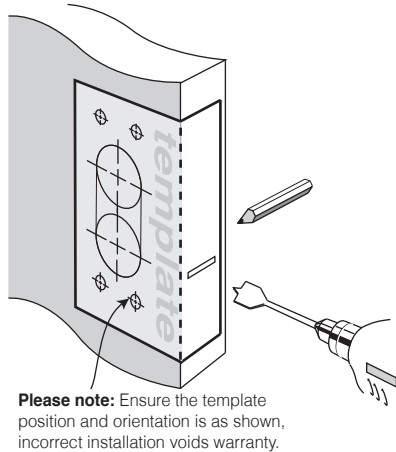


Twin Pull Handle Version - Suits 35mm to 45mm door thickness
8906BB 450mm and 8905BB 600mm Series

Step 1.

- Fold template where indicated.
- Position template on door edge at desired lock / latch height.
- Firmly hold template and mark latch height and two 60mm holes centres.
- Measure door thickness and mark centre on 'latch height' marking.
- Drill 22mm (7/8") latch hole.
- **Note:** it is important to drill this hole squarely.
- Drill pilot holes [suggested size 3mm (1/8")]. Then enlarge holes to 60mm, drilling from both sides of the door.

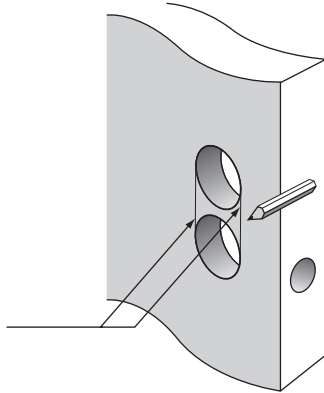
In particular, ensure the 60mm dia. holes through door face are drilled only to this size, otherwise correct functioning may be impeded – refer template.



Step 2.

- Mark vertical lines between two holes as per illustration.
- Cut along marked lines.

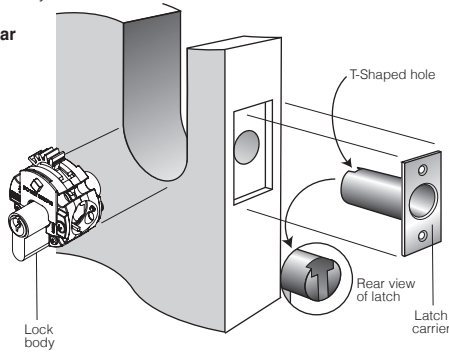
Mark vertical lines between holes as shown. Cut along vertical lines.



Step 3.

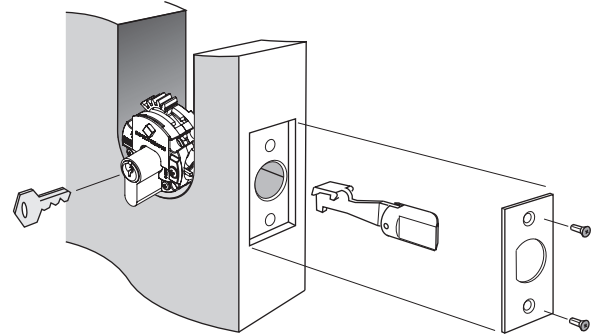
- Mark and chisel latch faceplate to a recess of 2mm. Use latch carrier as a template.
- Insert lock body into 60mm (2 3/8") slot.
- Insert latch carrier through 22mm (7/8") hole into lock body assembly and tighten with two screws.

Ensure T-shaped hole at rear of latch carrier is upright!



Step 4.

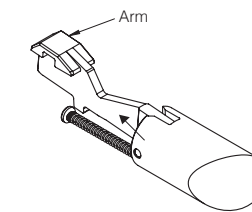
- Insert the latch through the slot in the carrier until it can go no further.
- Insert the key and turn to retract the latch bolt.
- Pre-drill wood screw holes with suitable drill size.
- Install faceplate, then screw into position.



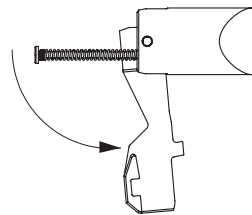
Step 4a.

Trilock latch bolt re-handing.

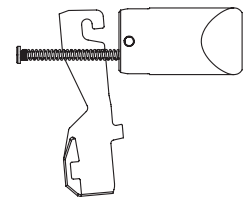
- Check that tapered side of the latch bolt faces towards the door jamb.
- It may be necessary to unclip the rear arm & rotate bolt 180°.
- This is achieved by following steps:



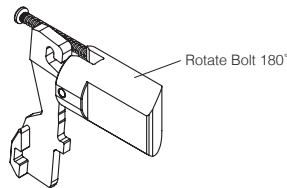
1. Remove latch bolt assembly from carrier



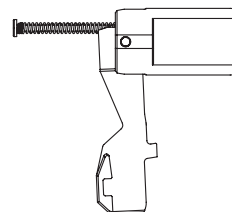
2. Rotate arm downwards



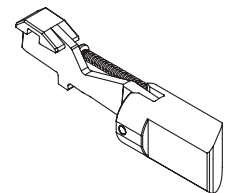
3. Unclip arm from latch bolt



4. Rotate bolt 180°



5. Re-attach arm to latch bolt



6. Rotate arm upwards & fit back into carrier

NOTE:

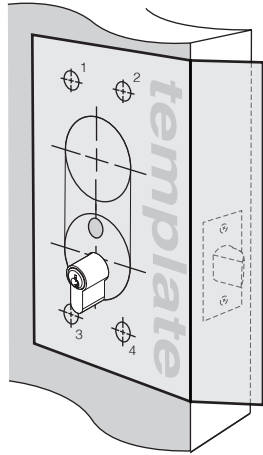
- carefully follow these instructions when installing.
- do not overtighten screws.
- use of power driver is not recommended.
- fully remove the Trilock prior to painting the door to avoid harming the product's finish.

Installation Instructions for Trilock Omni BB

Twin Pull Handle Version - Suits 35mm to 45mm door thickness
8906BB 450mm and 8905BB 600mm Series

Step 5.

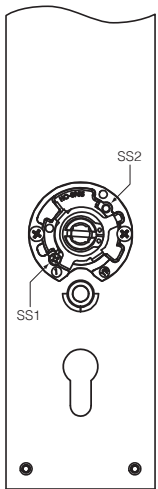
- Remove perforated cut-out from cardboard template and place over lock body, making sure template is square to door edge.
- While holding template firmly in position, mark remaining four holes, as indicated on both sides of the door (reversing template as required).
- Drill pilot holes from both sides of the door [suggested size 3mm (1/8")] then enlarge, again from both sides of the door, to sizes indicated on template, otherwise correct functioning may be impeded – refer template.



Step 6.

To hand external lever & set lever operation.

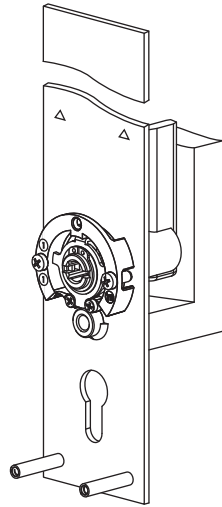
- Remove stop screw from SS1 or SS2, to allow lever to operate away from door edge.



NOTE: There is no need to re-hand the internal lever.

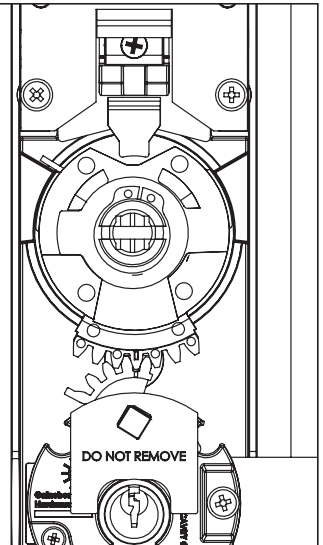
Step 7.

- Install two posts to Trilock external faceplate (this is the faceplate **without** the rectangular snib push-button).



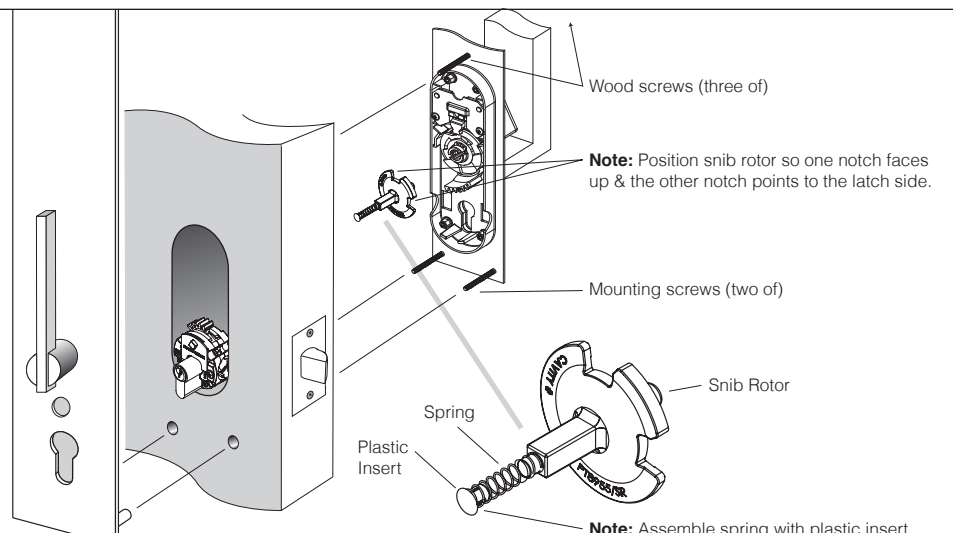
Step 8.

- Mount the inside faceplate so that mark on large gear engages with mark on lock bodygear.



Step 9.

- Insert spring and snib rotor in the square hole of the internal lever.
- Position snib rotor so one notch faces up and the other notch points to the latch side.
- Mount outside furniture plate to outside of the door, and align the two making sure the snib rotor engages with the external lever.
- Fit mounting screws (two of) from inside and tighten into threaded posts.
- Fit wood screws (three of) to inside furniture plate (recommend pilot drilling before fitting screws).



NOTE: Test all functions for smooth operation.

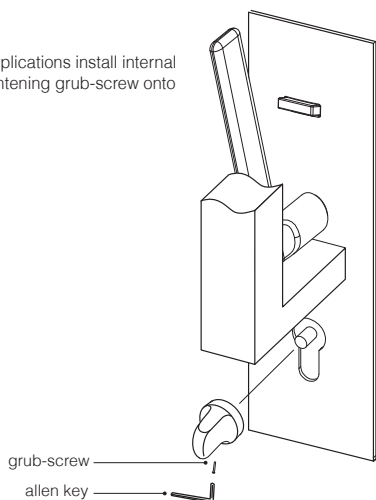
- NOTE:**
- carefully follow these instructions when installing.
 - do not overtighten screws.
 - use of power driver is not recommended.
 - fully remove the Trilock prior to painting the door to avoid harming the product's finish.

Installation Instructions for Trilock Omni BB

Twin Pull Handle Version - Suits 35mm to 45mm door thickness
8906BB 450mm and 8905BB 600mm Series

Step 10.

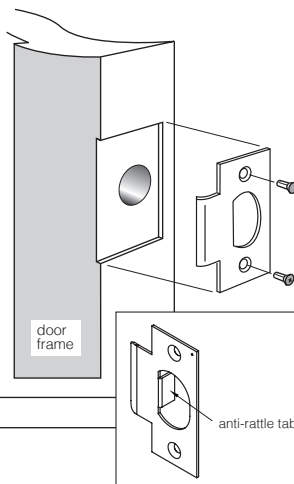
- For single cylinder applications install internal turnbutton now by tightening grub-screw onto protruding shaft.



Step 11.

All door seals must be fitted prior to fitting strike plate.

- Position the door so that the centrepoint of the strike plate can be marked on door frame.



- Mark and drill a 25mm (1") hole to a depth of 25mm (1"), at a corresponding height to the bolt.
- Mark and chisel recesses for strike plate.
- Screw into position using 2 wood screws as supplied.

Door Adjustment Check

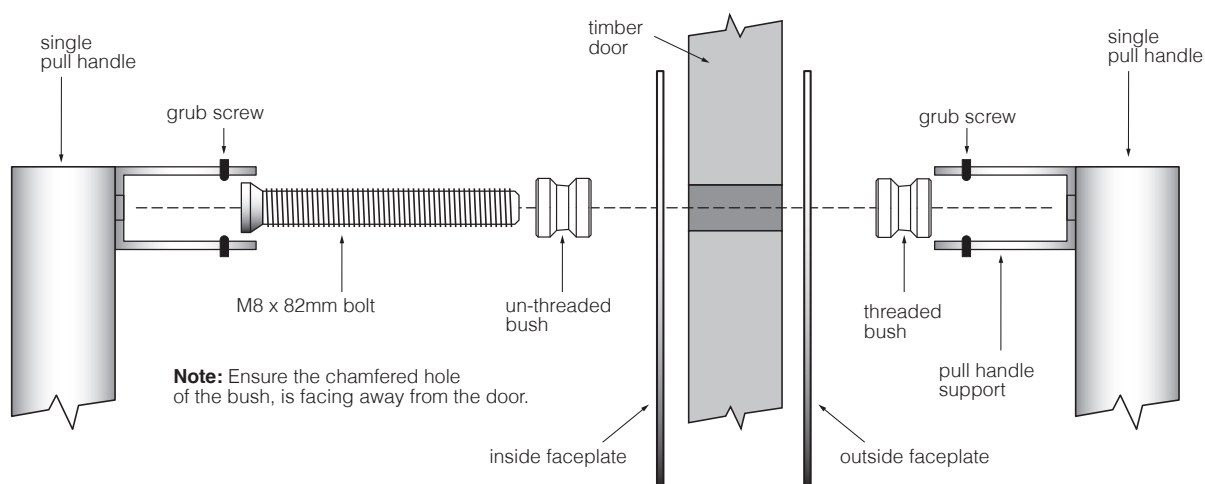
- When door is closed using finger pressure, ensure bolt is latching into strike plate.
- If door is rattling when in latched position. Open door, remove strike plate & adjust anti-rattle tab & refit strike plate to door frame. Repeat check 1.

Step 12.

Fixing of double pull handle

Note: Suitable for solid doors only.

- Check and make sure that the inside & outside faceplates are lined up straight and square with the door.
- Once the desired position of the inside & outside faceplate has been confirmed, mark the centre of the hole at the top of the faceplate and proceed to drill a suitable hole. **Note:** When drilling the hole drill hole from both sides of the door with a 9mm drill bit.
- Hold the unthreaded bush onto the inside faceplate, ensuring the chamfered hole of the bush, is facing away from the door.
- Then, from the same side, install the suitable M8 screw through the bush and through the door.
- Then, from the outside faceplate fit the threaded bush ensuring chamfered hole of the bush, is facing away from the door.
- Tighten M8 screw securely with suitable screwdriver.
- Place the pull handle over top of two mounting bushes.
- Line up the pull handle so that it is lined up straight and square. Insert the grub screws and tighten with allen key provided.
- Repeat for 2nd pull handle.



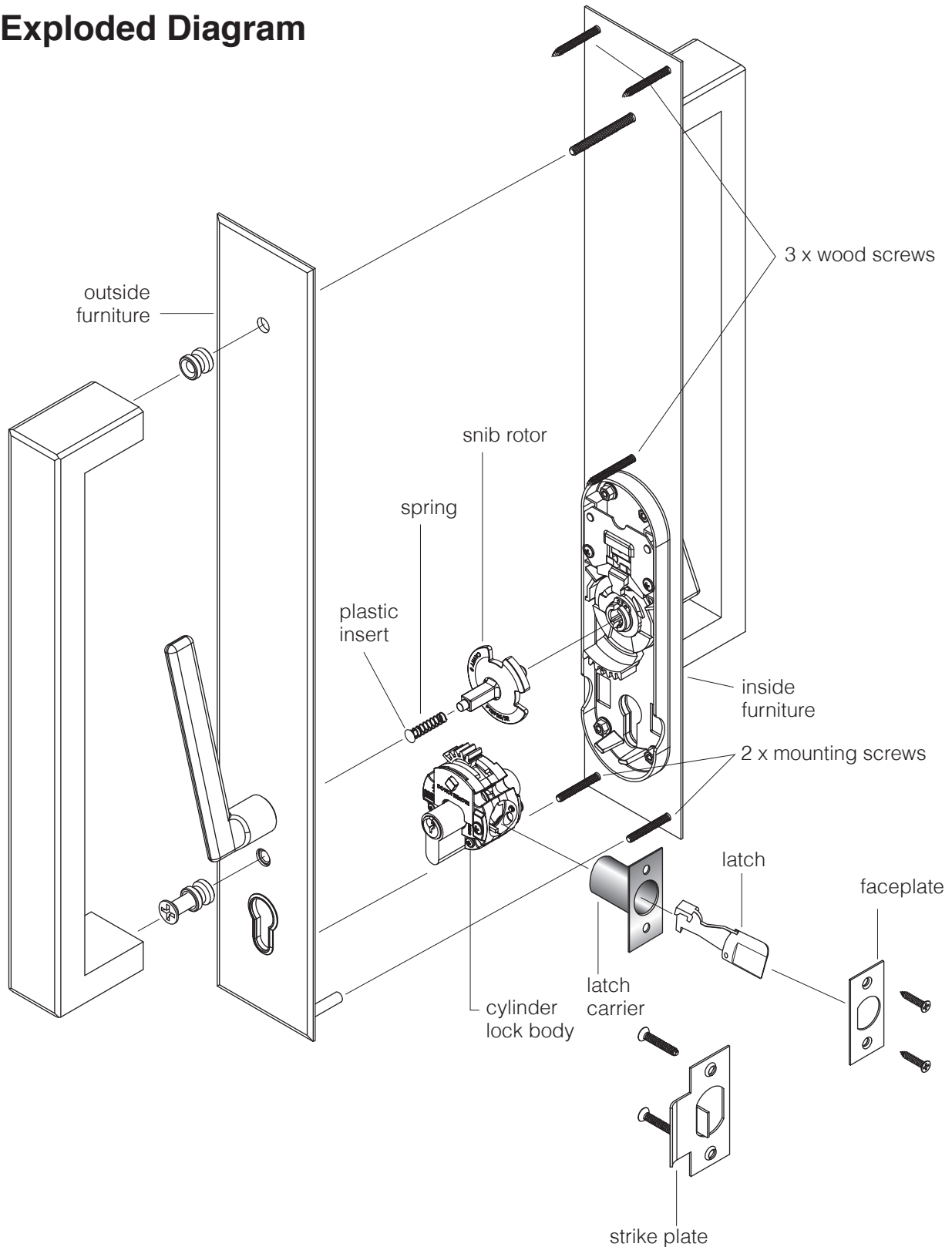
NOTE:

- carefully follow these instructions when installing.
- do not overtighten screws.
- use of power driver is not recommended.
- fully remove the Trilock prior to painting the door to avoid harming the product's finish.

Installation Instructions for Trilock Omni BB

Twin Pull Handle Version - Suits 35mm to 45mm door thickness
8906BB 450mm and 8905BB 600mm Series

Exploded Diagram



ALLEGION

gainsboroughhardware.com.au
gainsboroughhardware.co.nz

PDGA0056R3 FEB 24

