

# Lightology

lightology.com  
866-954-4489  
05-01-26

Project: \_\_\_\_\_

Company: \_\_\_\_\_

Location: \_\_\_\_\_ Fixture Type: \_\_\_\_\_

SPEC #: **BPU921726**

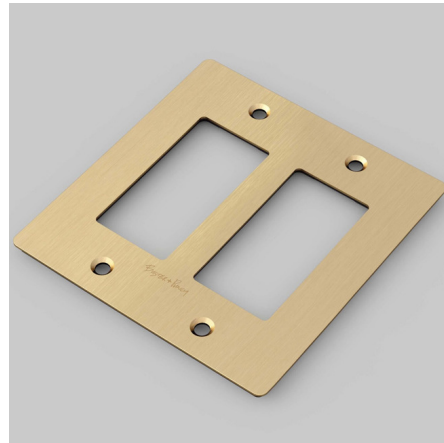
Approved On: \_\_\_\_\_ Approved By: \_\_\_\_\_

## Buster + Punch Metal Wall Plate

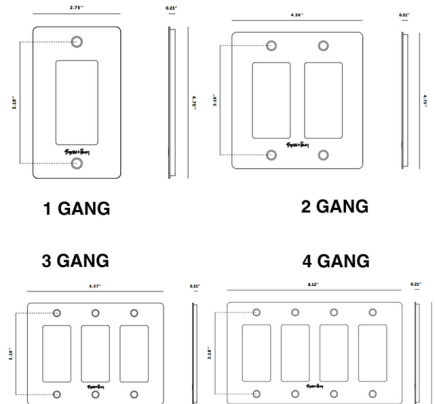
By Buster + Punch

### Description

The Buster + Punch Wall Plate features a clean and modern design with an industrial flair. Available in 1, 2, 3, and 4 gang wall plates in a variety of metal finishes. Each wall plate comes with inner plates and are ready to match up with Buster + Punch modules and detail kits. Mounts to standard flush mounted boxes. Available with or without a Buster + Punch logo. Note: Wall plates have a .16 inch shadow gap when installed. Learn more about Buster + Punch Electricity Collection here.



Shown in brass



### Specifications

COLOR	.....	N/A
BODY FINISH	.....	Brass
WATTAGE	.....	N/A
DIMMER	.....	N/A
DIMENSIONS	.....	4.56"W x 4.75"H x 0.21"D
BULB	.....	N/A



CLICK TO VIEW PRODUCT

Notes: