

SPL5 UNIVERSAL MOUNTING BRACKET

Installation guide for James Loudspeakers SPL5 SoundBar series universal mounting bracket.



Part A (Pre-Assembled)
(2) VESA rails, (2) Bracket rails,
(2) Short swivel joints (part B),
(2) Long swivel joints (part C)



Part B
(2) Additional
Short
Swivel Joint



Part C
(2) Additional
Long
Swivel Joint

BRACKETS SUPPLIED HARDWARE

Bag	QTY	Screws
#1	28	VESA Spacers (1.25" x 0.125")
#2	4	M8-50mm Pan Head Philips Screws
	4	M8-45mm Pan Head Philips screws
	4	M8-35mm Pan Head Philips screws
#3	4	M6-50mm Pan Head Philips Screws
	4	M6-45mm Pan Head Philips screws
	4	M6-35mm Pan Head Philips screws
#4	4	UNC 1/4-20" Pan Head Philips Screws
	4	Sealing Washers (0.625" x 0.275")
	2	UNC 10-24 Flat Head
#5	4	Additional swivel joints



1 Place the display on a padded flat surface.



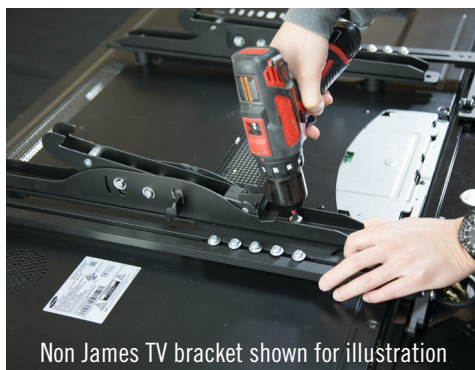
2 Loosen screws on bracket (Part A) and pre-assembled swivel joints, so that they can slide/pivot with little resistance. If extra support is desired on the sliding portion of the bracket, then use the additional screws and washers provided.



3 Determine the amount of VESA spacers needed (Bag #1). With or without the spacer on the VESA pattern, the bracket and slider should slide up and down without interference from the SoundBar or any protrusions on the rear of the display.

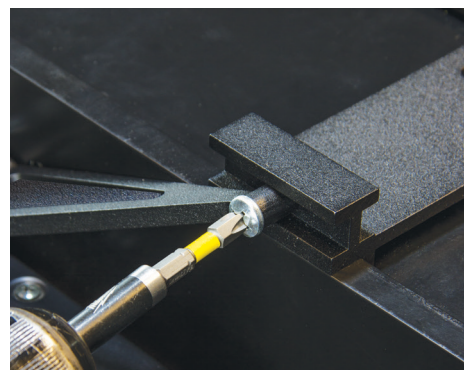


4 Position SoundBar evenly below the display.



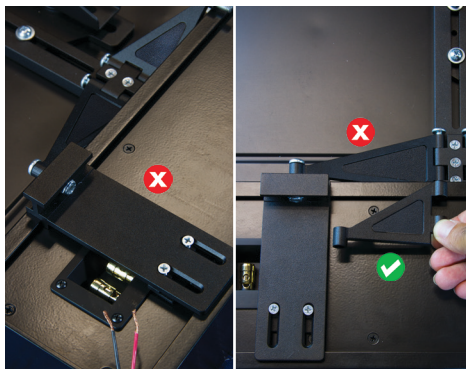
Non James TV bracket shown for illustration

5 Determine the screw size, M6 or M8, required to mount your wall bracket to the display. Select either the M6 (Bag #3) or M8 (Bag #2) hardware bag. 3 lengths are provided, 35mm, 45mm, and 50mm. Select the correct length to match the spacer quantity (height) and then loosely mount the brackets to the rear of the display.

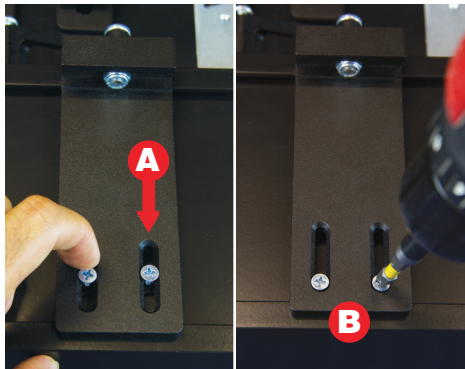


6 After your bracket has been loosely secured to the display, align the holding tabs into the top channel on the rear of the SoundBar. Then secure the bar plates to the swivel joints with the provided UNC 1/4 - 20" screws and matching hex nuts. If the bar plates do not clear the SoundBar channel then try loosening the screws in step 5.

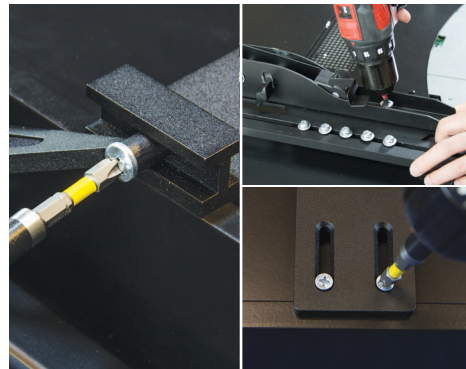
SPL5 UNIVERSAL MOUNTING BRACKET



- 7** If the SoundBar terminals are blocked by the SPL5 bracket holding tabs, then swap the swivel joint with the alternate length, either Part B or Part C.



- 8** **A** - Slide the adjustable portion of the holding tab into the bottom slot of the SoundBar.
B - Tighten the two screws on each of the holding plates



- 9** Make all final adjustments to swivel joints and bracket tabs, make sure to avoid stressed positions/alignments. Lastly, tighten all screws on joints & tabs while applying constant pressure on the SoundBar so that it's snug against the display while tightening fasteners.



- 10** Connect wires to terminals, ensuring correct polarity, before mounting to wall.



- 11** Follow the manufacturer's instruction for the wall mount installation. (Will require 2 or more people).



Our wall mounts allow the hanging of your display directly with our bracket. (Purchased separately. P/N BRK.TV.UN)