

Enhance™ Collection

Perenne™ is a sophisticated synergy of urban elegance and natural splendor. A harmonious marriage of stone and terrazzo looks with vibrant botanical and geometric deco's. A versatile medley of shapes, sizes, and shades, illustrating the enchanting dance between Mother Nature and modernity. With Perenne, experience the captivating compatibility of organic charm and contemporary innovation.

PERENNE™
Color Body Porcelain



Enhance™

LARGE FORMAT



FLOOR / WALL



RESIDENTIAL



COMMERCIAL



INDOOR



OUTDOOR



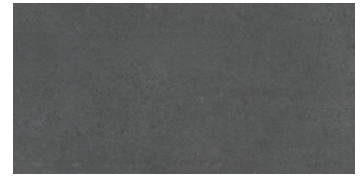
Sugar**



Cookie**



Espresso



Ink



Flour**



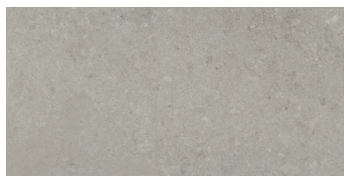
Pecan**



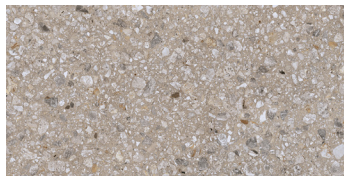
Java



Dye



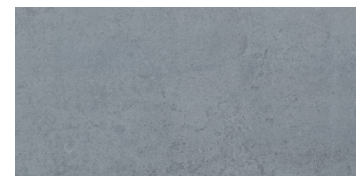
Gray**



Mist**



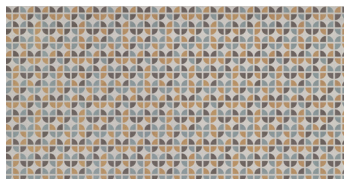
Amber



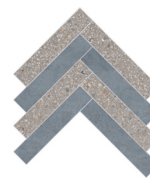
Blue



Wynd
(Available in 24"x47" & 47"x110" slim)



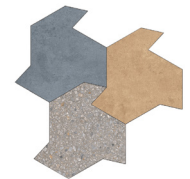
Twist
(Available in 24"x47" & 47"x110" slim)



Up



Rhythm



Oblique

Cut Decos can be made with any field tile colors!



Sizes													
	47" x 110" 47.24" x 110.24"	47" x 94" 47.09" x 94.49"	47" x 47" 47.09" x 47.09"	24" x 47" 23.50" x 47.09"	24" x 24" 23.50" x 23.50"	12" x 24" 11.81" x 23.62"	18" x 9"	16" x 16"	19" x 19"	1" x 1" 12" x 12" Mesh	3" x 6" 12" x 12" Mesh	3" x 3" 12" x 12" Mesh	2" x 12" SBN
Thickness	6mm	6mm	6mm	6mm, 9mm & 2CM	9mm	9mm	9mm	9mm	9mm	9mm	6mm	6mm	6mm & 9mm
Faces	18	18	18	24	24	24	N/A	N/A	N/A	N/A	N/A	N/A	N/A
Finish	Matte	Matte	Matte	Matte & R11	Matte	Matte	Matte	Matte	Matte	Matte	Matte	Matte	Matte
Edge	Rectified	Rectified	Rectified	Rectified	Rectified	Rectified	Water Cut	Water Cut	Water Cut	Cut	Cut	Cut	Cut
Grout Joint Recommendation	Check Website												
Testing	Abrasion Resistance C1027	Breaking Strength C648	Chemical Resistance C650	Water Absorption C373	DCOF ANSI A1371	Scratch Hardness MOHS	Shade Variation Rating						
Results*	Check Website	Check Website	Check Website	Check Website	Check Website	Check Website	V2						

**AVAILABLE IN SLIM SIZES - 6mm Thickness
24"x47"
47"x47"
47"x94"
47"x110"

FLOUR, MIST, AND PECAN SLIMS ALSO AVAILABLE IN POLISHED FINISH.

Sustainability Attributes

- Red List Free
- Health Product Declaration (HPD) provided upon request
- Product Packaging is 100% recyclable



Product and Installation Details | ANSI A108.02 Section 4.3.8.2 - For running bond/brick joining patterns utilizing tiles (square or rectangular) where the side being offset is greater than 18" (nominal dimension), the running bond offset will be a maximum of 33% unless otherwise specified by the tile manufacturer. If an offset greater than 33% is specified, specifier and owner must approve mock-up and lippage.

*For more information visit www.emser.com. Always consult a professional for proper usage and installation.