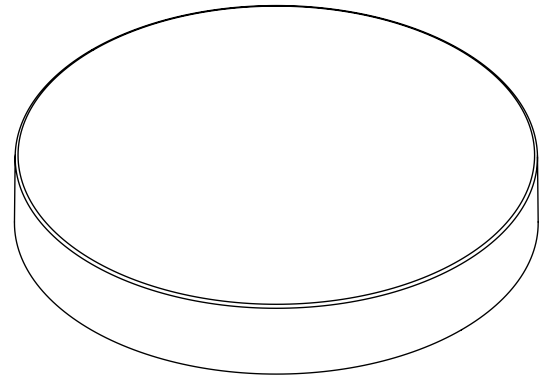


SECTION A-A



STATIC TORQUE RECOMMENDATION: 40-70 in-lbs
 REQUIREMENT MAY VARY DEPENDING UPON CONTAINER MATERIAL,
 NECK FINISH, AND CAPPING EQUIPMENT

REFERENCE	DIMENSION	TOLERANCE	UNITS
T	3.525 [89.54]	± 0.015 [0.38]	in [mm]
E	3.410 [86.61]	± 0.015 [0.38]	in [mm]
H	0.505 [12.83]	± 0.010 [0.25]	in [mm]
OAH	0.576 [14.63]	± 0.010 [0.25]	in [mm]
OD	3.637 [92.38]	± 0.015 [0.38]	in [mm]
PART WEIGHT	14.85	± 1.50	g
THREAD DETAIL INFORMATION:	5 THREADS PER INCH	0.200" [5.08] PITCH	380° FULL DEPTH THREADS

DISCLAIMER

This specification does not relieve the customer of their ultimate responsibility for the determination of the appropriate container. It is the customer's responsibility to select the appropriate packaging based upon all information at their disposal including the specific application, regulatory compliance, product compatibility and shipping requirements. WE HEREBY DISCLAIM AND EXCLUDE ANY EXPRESS OR IMPLIED WARRANTIES, INCLUDING WITHOUT LIMITATION THE IMPLIED WARRANTIES OF MERCHANTABILITY AND FITNESS FOR A PARTICULAR PURPOSE.

DISTRIBUTED BY:

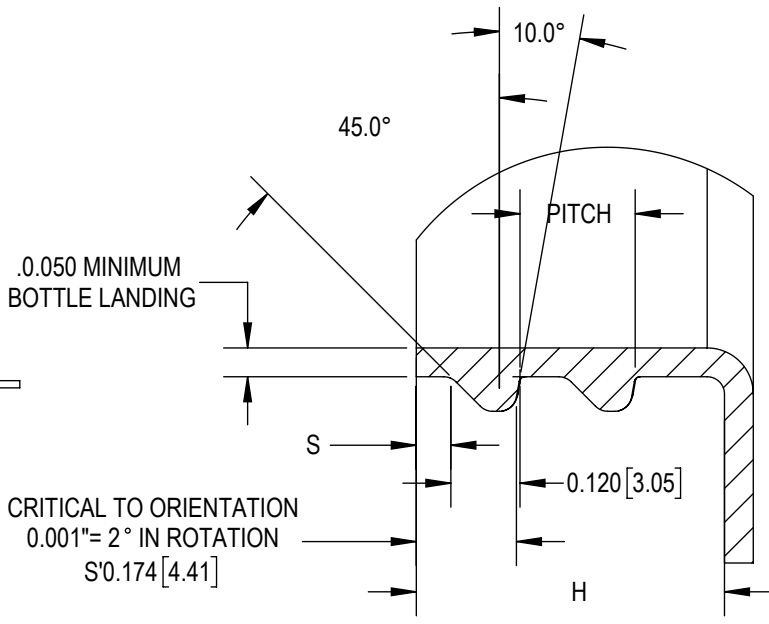
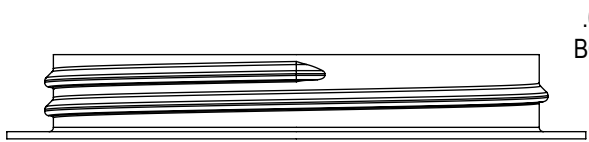
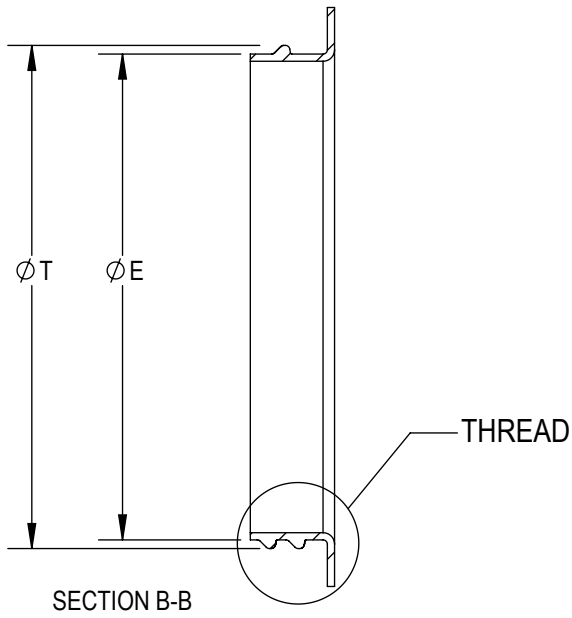
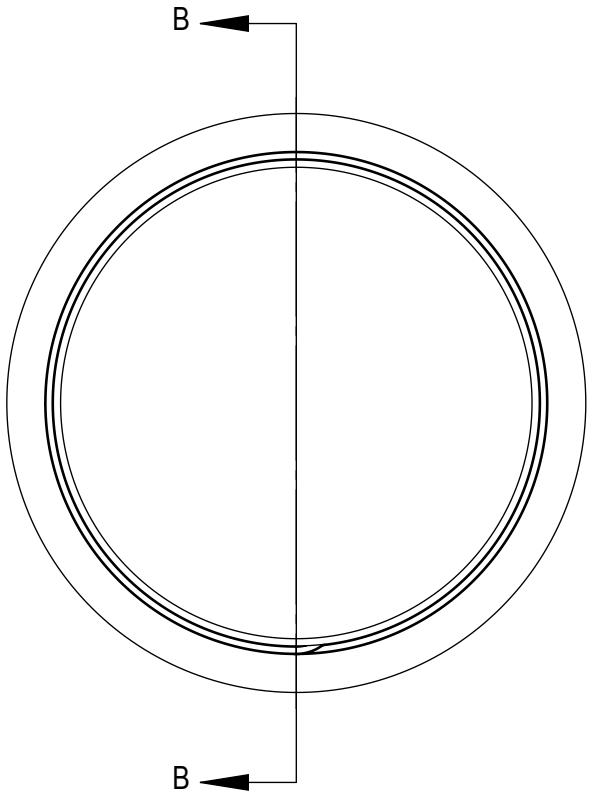


REF NO.:

DWG32009

DESCRIPTION:

89-400 PP Smooth Top, Smooth Sides Cap with
 TS-AF10/20P Liner



DETAIL THREAD
SCALE 3 : 1

REFERENCE	DIMENSION	TOLERANCE	UNITS
E	3.374 [85.70]	±0.017[0.43]	in [mm]
T	3.494 [88.75]	±0.017[0.43]	in [mm]
S	0.060 [1.52]	±0.015[0.38]	in [mm]
H	0.535 [13.59]	±0.015[0.38]	in [mm]
PITCH	0.200		in [mm]
TPI	5		

DISCLAIMER

This specification does not relieve the customer of their ultimate responsibility for the determination of the appropriate container. It is the customer's responsibility to select the appropriate packaging based upon all information at their disposal including the specific application, regulatory compliance, product compatibility and shipping requirements. WE HEREBY DISCLAIM AND EXCLUDE ANY EXPRESS OR IMPLIED WARRANTIES, INCLUDING WITHOUT LIMITATION THE IMPLIED WARRANTIES OF MERCHANTABILITY AND FITNESS FOR A PARTICULAR PURPOSE.

DISTRIBUTED BY: 	REF NO. : DWG32009
DESCRIPTION: 89-400 PP Smooth Top, Smooth Sides Cap with TS-AF10/20P Liner	

PRODUCT DATA SHEET

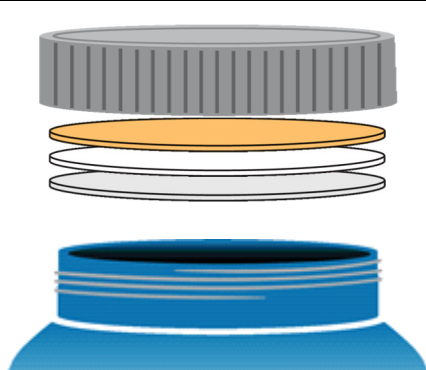
TS-AF10/20P Aluminum Foil Liner

MRP DESCRIPTION - (320)TS-AF10.020 PL

- Tri-Line™ AF10/20P is a pulp backed primary liner with a barrier facing consisting of paper backed aluminum foil.
- This product is not recommended for use in applications with aqueous, acidic, alkali or corrosive products.
- Available with special wax to reduce removal torque.

Typical Product Attributes

Construction

Pulp Board Paper Aluminum Foil		SI (µm)	US (Mils)
		508,0 63,5 25,4	20.0 2.5 1.0
Thickness Tolerance		± 10%	± 10%
Minimum Width		25,4 mm	1.0 in
Width Tolerance		± 1,6 mm	± 0.0625 in

Properties

Oxygen Transmission (O ₂ TR)	Essentially Zero
Water Vapor Transmission (WVTR)	Essentially Zero

Regulatory Compliance

FDA Compliance	21 CFR 177.1210 Closures with sealing gaskets for food containers. 21 CFR 176.180 Components of paper and paperboard in contact with dry foods. 21 CFR 176.170 Components of paper and paperboard in contact with aqueous and fatty foods.
Drug Master File (DMF)	Will be added to DMF upon a request for a Letter of Authorization.
Other Compliances	USFDA Food Allergen Guidelines California Proposition 65 Labeling Requirements Limitations of Heavy Metals in Packaging per CONEG & EU 94/62/EC, Article 11
Safety Data Sheet (SDS) Statement	Safety Data Sheets (SDS) are not required for articles as defined in 29 CFR 1910.1200, the OSHA Hazard Communication Standard (HazCom). This product is an article as defined by HazCom and is not considered to be, or to contain, a hazardous chemical based on evaluations made by our company.

Please note that construction does not reflect adhesive or resin bonding layers, if present.

DISCLAIMER

This specification does not relieve the customer of their ultimate responsibility for the determination of the appropriate container. It is the customer's responsibility to select the appropriate packaging based upon all information at their disposal including the specific application, regulatory compliance, product compatibility and shipping requirements. WE HEREBY DISCLAIM AND EXCLUDE ANY EXPRESS OR IMPLIED WARRANTIES, INCLUDING WITHOUT LIMITATION THE IMPLIED WARRANTIES OF MERCHANTABILITY AND FITNESS FOR A PARTICULAR PURPOSE.

DISTRIBUTED BY:



REF NO.:

DWG32009

DESCRIPTION:

89-400 PP Smooth Top, Smooth Sides Cap with
TS-AF10/20P Liner