

# UNIVERSAL BUNDLE

## Surface & Recessed Mount Channel Bundle

The go to for tape light channel installations with multiple mounting options, the universal is just that. Supporting recessed or surface mount applications, the universal channel features a slightly regressed housing that helps eliminate tape light dotting while providing a slim and sleek final appearance.

- Mounting channel for tape light
- Surface or recessed mounting
- Maximum recommended wattage per foot of tape light < 6.1W/ft (20W/M)
- Slightly more regressed profile that helps eliminate LED dotting
- Frosted, UV & flame resistant lens protects light source while evenly diffusing light
- Lightweight anodized aluminum provides excellent heat dissipation
- Field cuttable channel and lens
- Pre-Drilled, countersunk holes
- Compatible with 10mm wide tape light

### Available Finishes



Anodized Aluminum

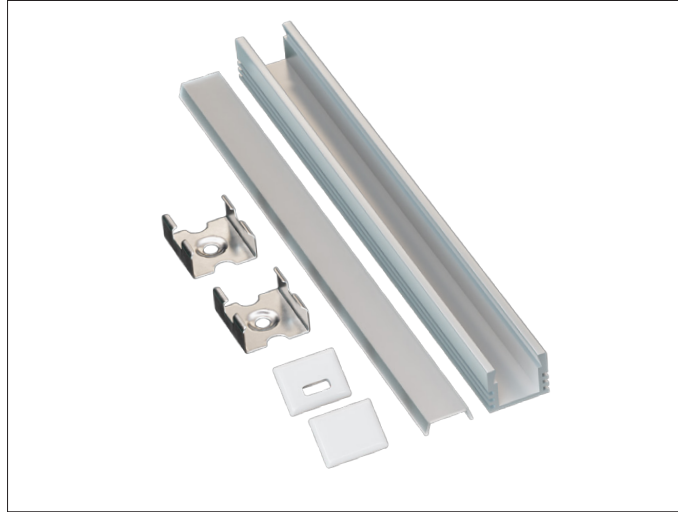


Black

### Compatible Tape Light

- Single Color (10mm)
- Tunable CCT (10mm)

PROJECT:
TYPE:
LOCATION:
CATALOG NUMBER:



### UNIVERSAL BUNDLE ORDERING INFORMATION

ITEM NUMBER	DESCRIPTION
<b>PE-UNV-2M-BNDL1</b>	2M Universal Single Bundle Includes: (1) 2M Universal Channel in Aluminum Finish, (1) 2M High Grade Diffusion Lens, (1) End Cap w/ Hole, (1) End Cap w/o Hole, (6) Mounting Clips
<b>PE-UNV-BK-2M-BNDL1</b>	2M Universal Single Black Bundle Includes: (1) 2M Universal Channel in Black Finish, (1) 2M High Grade Diffusion Lens, (1) End Cap w/ Hole, (1) End Cap w/o Hole, (6) Mounting Clips
<b>PE-UNV-2M-BNDL5</b>	2M Universal Five Unit Bundle Includes: (5) 2M Universal Channels in Aluminum Finish, (5) 2M High Grade Diffusion Lenses, (5) End Caps w/ Hole, (5) End Cap w/o Hole, (30) Mounting Clips
<b>PE-UNV-2M-BNDLACC-BG5</b>	Accessory Five Pack Includes: (5) End Caps w/ Hole, (5) End Caps w/o Hole, (5) Mounting Clips
<b>PE-UNV-BK-2M-BNDLACC-BG5</b>	Accessory Five Pack Includes: (5) End Caps w/ Hole, (5) End Caps w/o Hole, (5) Mounting Clips
<b>PE-UNV-2M-BNDLLENSFR-BG5</b>	Lens Five Pack Includes: (5) Frosted PC Lens

### UNIVERSAL DIMENSIONS

