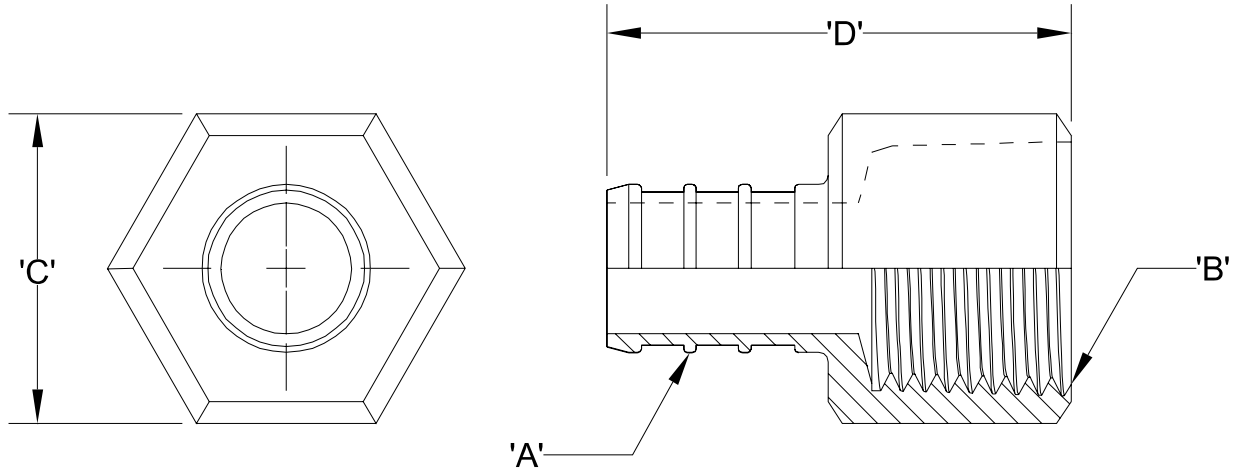




# Zurn PEX® XL-Low Lead Brass Barb x FPT Non Swivel Adapter - QQUFC\_\_GX Specification Sheet

Tag \_\_\_\_\_

Dimensional Data: Inches and [mm] are subject to manufacturing tolerances and change without notice.



NOTE: QQUFC55GX has eight sided head.

NOTE: Barb geometry will vary depending upon barb size.

Part Number	Description	'A'	'B'	'C'	'D'
QQUFC33GX	1/2" Barb x 1/2" FPT Non Swivel Adapter	1/2" Barb	1/2 -14 NPT	0.93" [23.6]	1.31" [33.3]
QQUFC34GX	1/2" Barb x 3/4" FPT Non Swivel Adapter	1/2" Barb	3/4 -14 NPT	1.12" [28.5]	1.38" [34.9]
QQUFC44GX	3/4" Barb x 3/4" FPT Non Swivel Adapter	3/4" Barb	3/4 -14 NPT	1.12" [28.5]	1.38" [34.9]
QQUFC55GX	1" Barb x 1" FPT Non Swivel Adapter	1" Barb	1" -11.5" NPT	1.41" [35.8]	1.67" [42.4]
QQUFC66GX	1-1/4" Barb x 1-1/4" FPT Non Swivel Adapter	1-1/4" Barb	1-1/4"-11.5" NPT	2.00" [50.8]	2.28" [57.9]
QQUFC77GX	1-1/2" Barb x 1-1/2" FPT Non Swivel Adapter	1-1/2" Barb	1-1/2"-11.5" NPT	2.30" [58.4]	2.30" [58.4]

**Engineering Specification:** Zurn PEX® XL-Low Lead Brass Barb x FPT Non Swivel Adapter. Used to connect PEX tubing to a male pipe thread. Manufactured from EcoBrass®, C69300. These fittings, as a system with Zurn PEX® tube, are pressure rated at 160 PSI at 73°F, 100 PSI at 180°F, and 80 PSI at 200°F. These fittings are listed by NSF as complying with the following standards: NSF/ANSI Standard 14, NSF/ANSI Standard 61 including Annex G, ASTM F877, CSA B137.5, and ASTM F1807.

#### Accessories

- \_\_\_ QCLP3X 1/2" QuickClamp® Crimp Ring
- \_\_\_ QCLP4X 3/4" QuickClamp® Crimp Ring
- \_\_\_ QCLP5X 1" QuickClamp® Crimp Ring
- \_\_\_ QCR3X 1/2" Copper Crimp Ring
- \_\_\_ QCR4X 3/4" Copper Crimp Ring
- \_\_\_ QCR5X 1" Copper Crimp Ring
- \_\_\_ QCR6X 1-1/4" Copper Crimp Ring
- \_\_\_ QCR7X 1-1/2" Copper Crimp Ring
- \_\_\_ QSOET3X 1/2" Stainless Steel Crimp Ring
- \_\_\_ QSOET4X 3/4" Stainless Steel Crimp Ring
- \_\_\_ QSOET5X 1" Stainless Steel Crimp Ring

Rev. A	Date: 2/22/10	C.N. No.110736
Dwg. No. 84401		Prod. No. QQUFC__GX