

## CAN-WBM

Wood Bottom-Mount Soft-Close  
Trash Can Pullout

## Installation Instructions

Scan QR or visit link to  
view installation video  
<https://delivr.com/2vgv8>



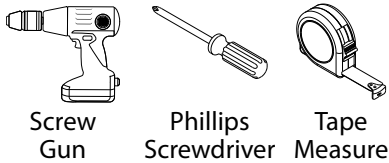
### IMPORTANT:

Before you begin, make sure you familiarize yourself with all the parts and fully read the instructions.

### CUSTOMER SERVICE:

Toll-free customer help line available weekdays between 7:00am and 6:00pm Central Time at 800-463-0660.

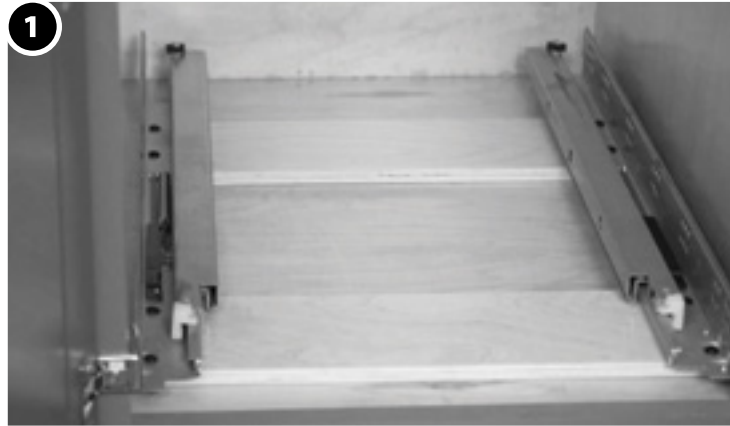
### TOOLS NECESSARY:



NOTE: If screw gun has a clutch, set to lowest setting so as not to over tighten and/or strip screws.

### PARTS IDENTIFICATION:

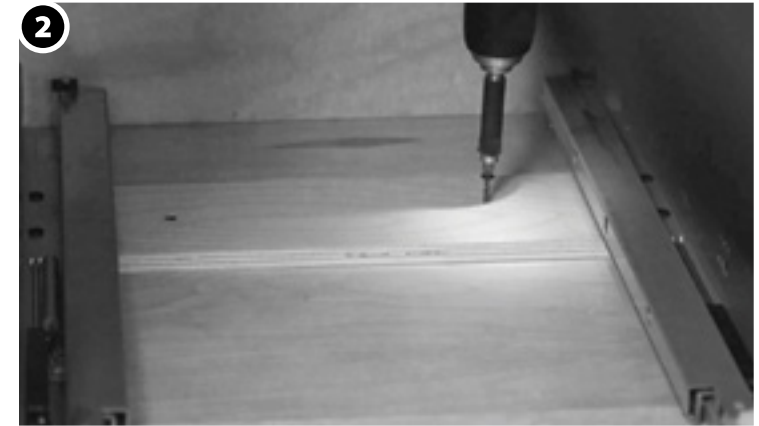
4 - #8 x 1" Coarse-Thread Wood Screws



Place the base unit inside the cabinet. Position it left to right, ensuring proper clearance for hinge or door protrusion.

1. Face Frame Applications: Pull the wooden runner to the front of the cabinet until it is tight against the back of the face frame.\*
2. Frameless Applications: Position the wooden runner with a 3/4" setback from the front of the cabinet.

\*For narrow door applications, unit may have to be placed inside and positioned with slides directly behind face frame.



Secure the base unit by screwing through the plywood runners (front & back) with the (4) #8 x 1" coarse-thread wood screws provided.



Place the trash organizer onto the undermount slides. Push the unit into the cabinet until you hear the clips lock into place. Move the unit in and out of the cabinet to ensure proper clearances.



Slide the unit out of the cabinet. Insert the plastic trash bins into the pullout.