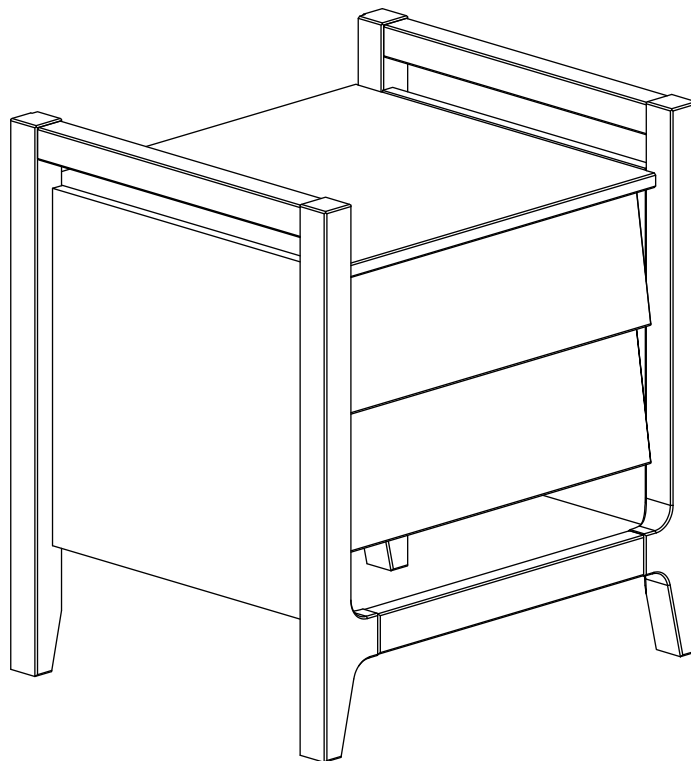


# Item # : OSWB4C

## Assembly Instructions

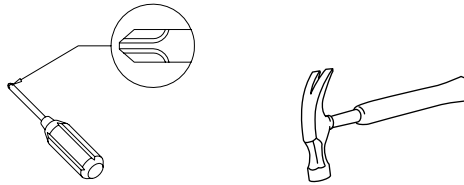


Please visit our website for the most current instructions, assembly tips, to report damage or request parts. [www.walkeredison.com](http://www.walkeredison.com)

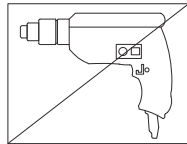
Revised 07/24 - V7

# General Assembly Guidelines

- I. Ensure that all parts and hardware are available before beginning assembly.
- II. Follow each step carefully to ensure the proper assembly of this product.
- III. Two people are recommended for ease in the assembly of this product.
- IV. The three main types of hardware used to assemble this product are wood dowels, screws and bolts.
- V. A Phillips head screwdriver and hammer is required for the assembly of this product.



- V I. Power tools should not be used to assemble this product.

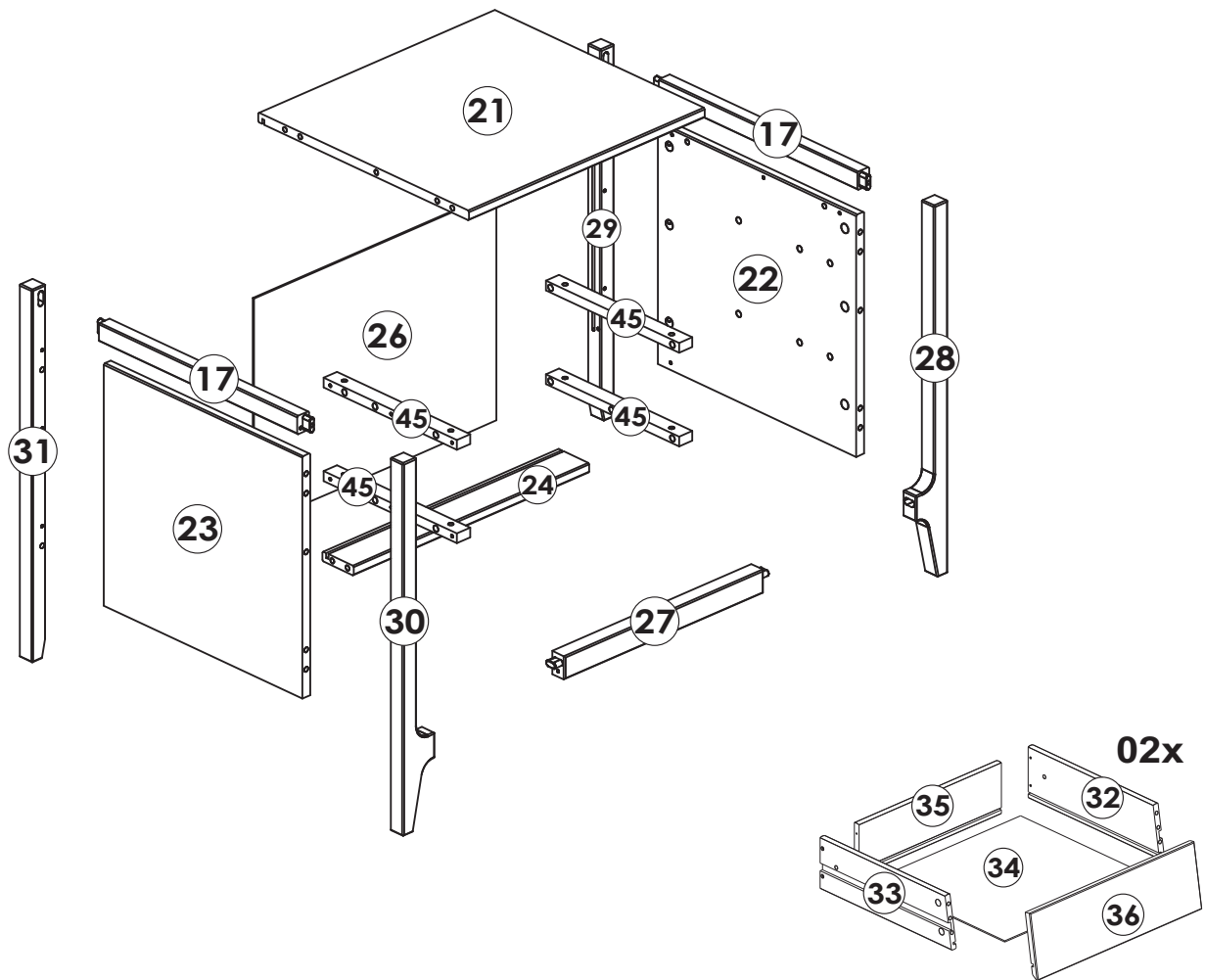


## VII. Maintenance Guide

To maintain long term performance and easy gliding of your solid wood drawers, we recommend applying wax to the wooden guide rails.

1. Bee's wax is recommended or Paraffin wax from a standard candle can be used.
2. Apply the wax by rubbing it on the wooden guide rails where there is wood-on-wood contact when opening and closing the drawer. (Wax should be room temperature, do not melt the wax onto the wood)
3. Wax should be applied every few months for the first year and then only when needed after that to keep the drawers sliding smoothly.

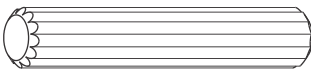
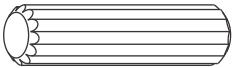
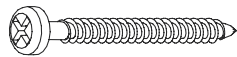
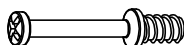




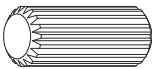
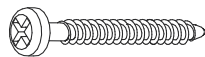

# Parts List

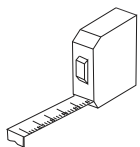


Part#	Description	Qty
17	Side top crossbar	02 pcs
21	Top panel	01 pc
22	Right side	01 pc
23	Left side	01 pc
24	Bottom rear crossbeam	01 pc
26	Back panel	01 pc
27	Bottom front crossbeam	01 pc
28	Right front foot	01 pc
29	Right back foot	01 pc

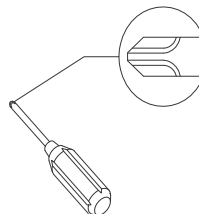
Part#	Description	Qty
30	Left front foot	01 pc
31	Left back foot	01 pc
32	Right side drawer	02 pcs
33	Left side drawer	02 pcs
34	Drawer bottom	02 pcs
35	Drawer back	02 pcs
36	Front Drawer	02 pcs
45	Drawer runner	04 pcs

# Hardware List

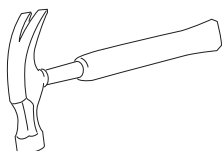
A		Ø8*40mm	Wooden dowel	04 pcs
B		Ø8*30mm	Wooden dowel	20 pcs
C		Ø4,0*30mm	Screw	12 pcs
D			Cam bolt	30 pcs
E		Ø15*09mm	Cam lock	30 pcs
F		Ø3,0*16mm	Screw	04 pcs
G		Ø7,0*50mm CB 10	Screw	02 pcs
H			Hex key	01 pc
I		Ø10*20mm	Wooden dowel	12 pcs
J		Ø4,0*25mm	Screw	12 pcs
K			Fixing device	04 pcs



Tape measure and hammer recommended for assembly (not included)

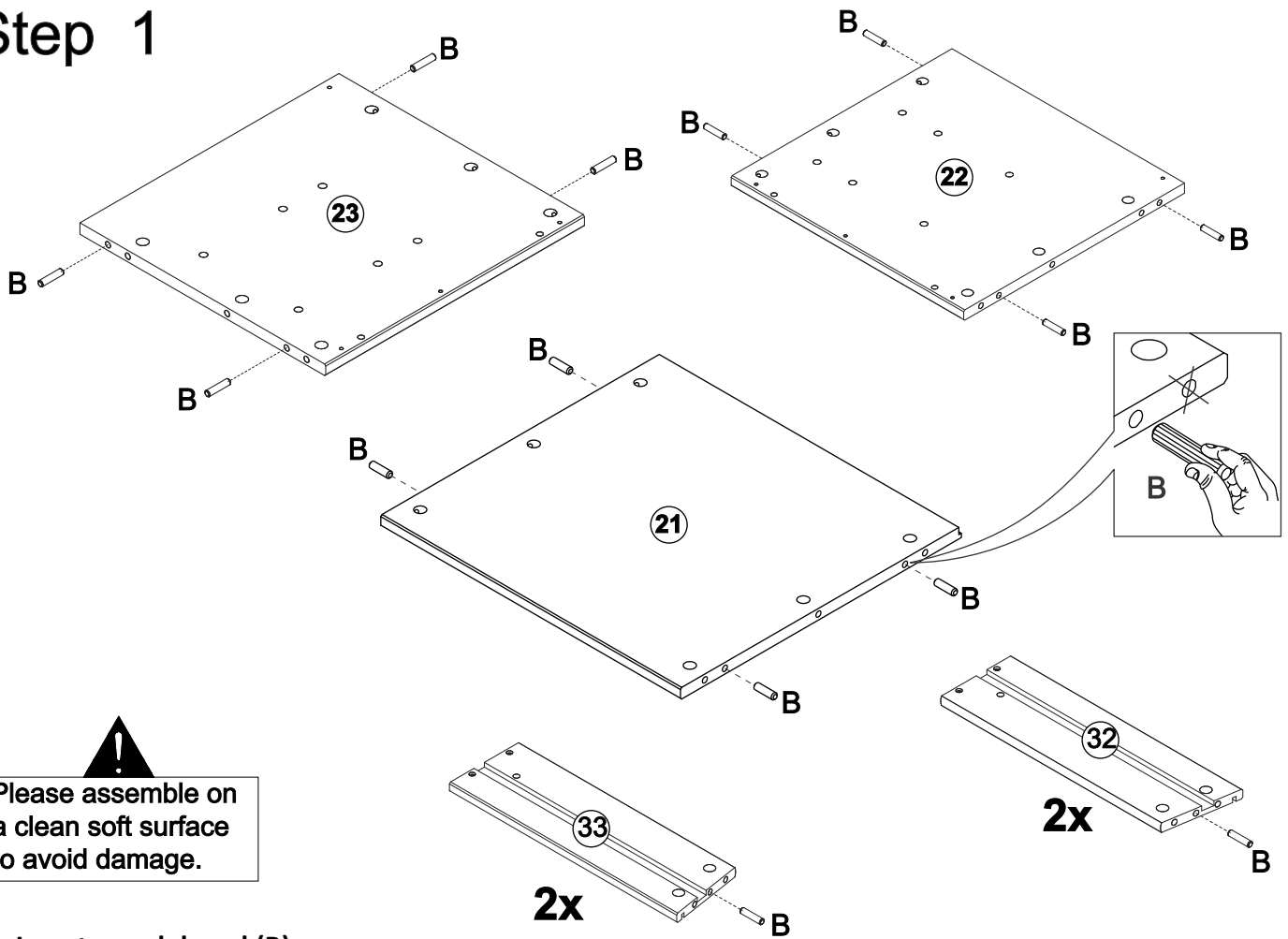


Philips head screwdriver required for assembly (not included)



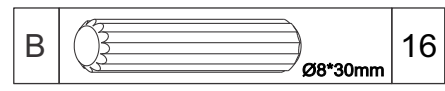
*The hardware quantities listed above are required for proper assembly. Some extra hardware may also have been included.*

# Step 1

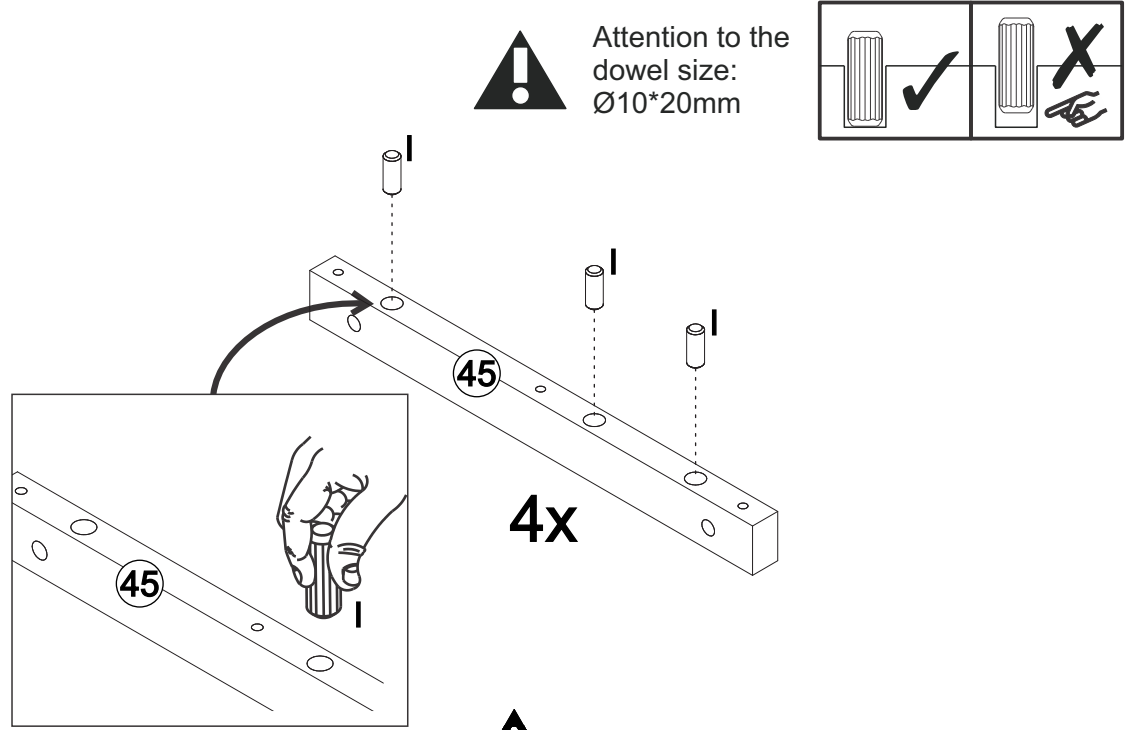


**!**  
Please assemble on a clean soft surface to avoid damage.

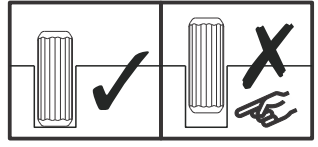
Insert wood dowel (B) into parts (21,22,23,32,33).



# Step 2

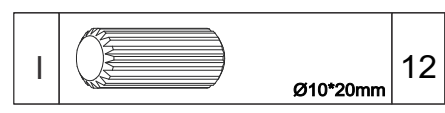


**!** Attention to the dowel size: Ø10\*20mm

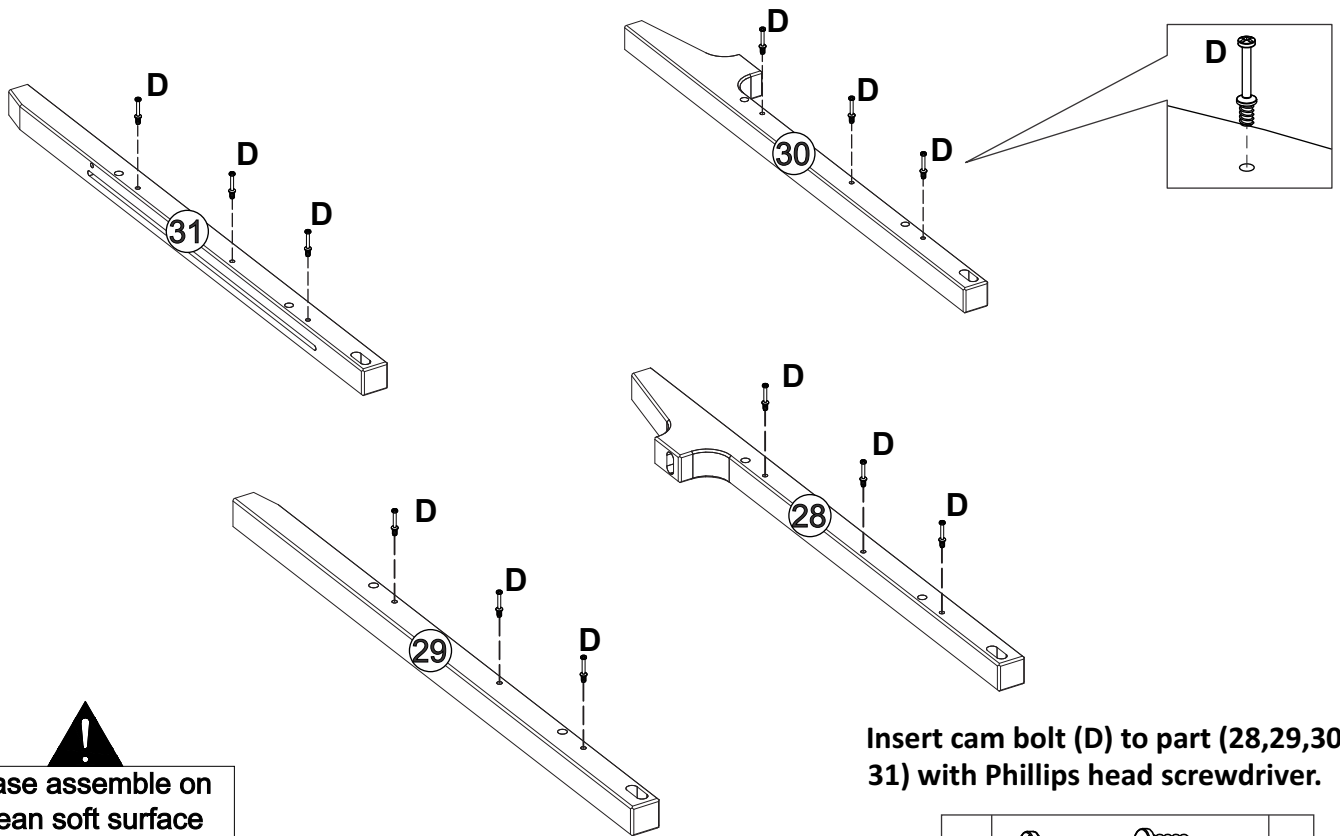


Insert wood dowel (I) into part (45).

**!**  
Please assemble on a clean soft surface to avoid damage.



# Step 3

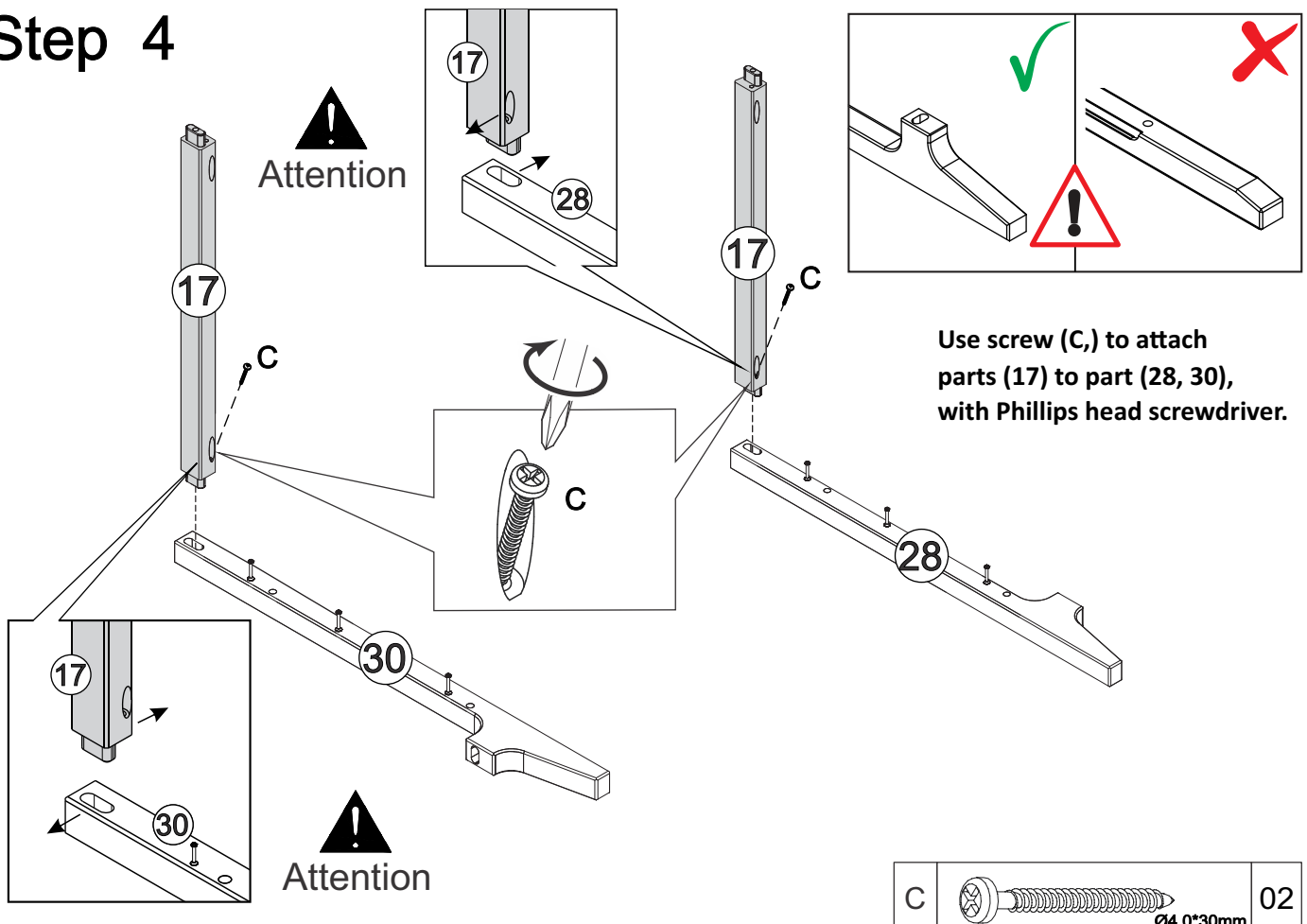


**!**  
Please assemble on a clean soft surface to avoid damage.

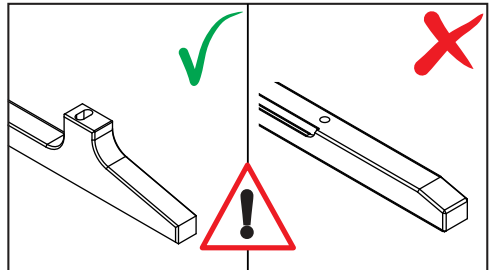
Insert cam bolt (D) to part (28,29,30, 31) with Phillips head screwdriver.

D		12
---	--	----

# Step 4



**!**  
Attention



Use screw (C,) to attach parts (17) to part (28, 30), with Phillips head screwdriver.

**!**  
Attention

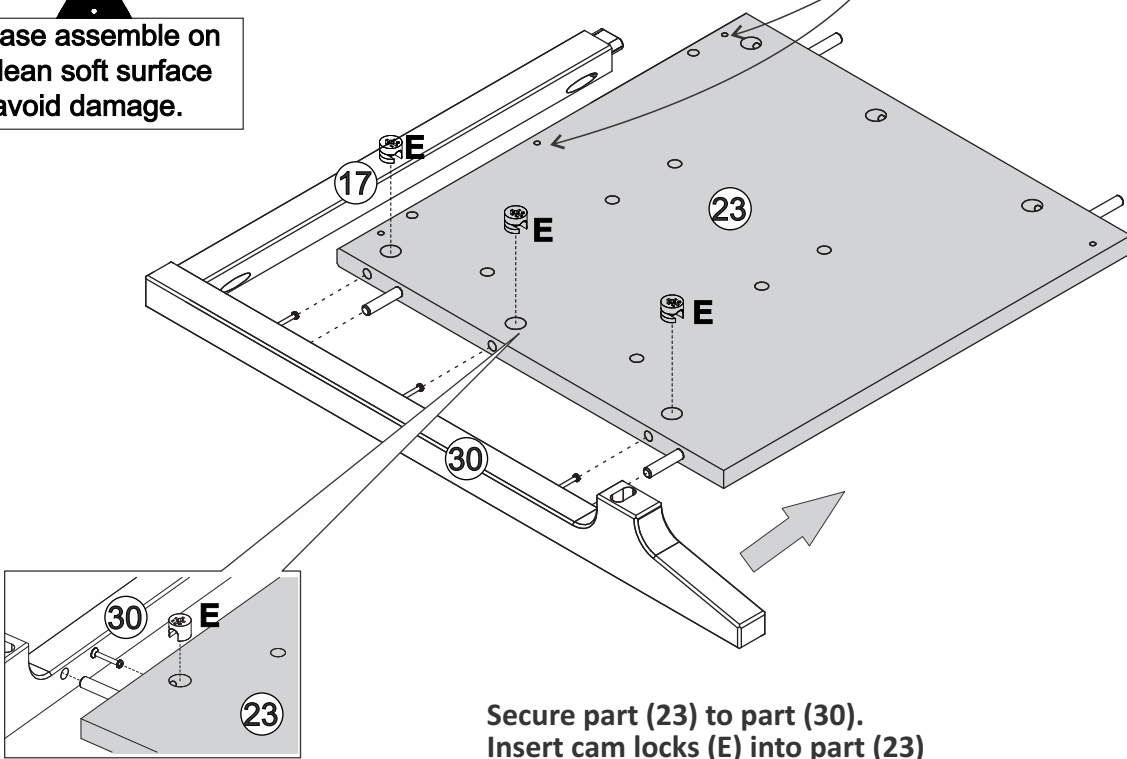
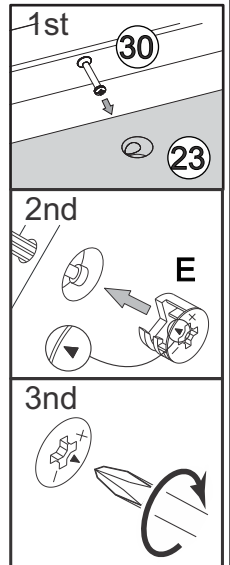
C		02 Ø4,0*30mm
---	--	-----------------

# Step 5

**!**  
Please assemble on a clean soft surface to avoid damage.



Heads up:  
05 holes up



Secure part (23) to part (30).  
Insert cam locks (E) into part (23)  
and tighten with a phillips head  
screwdriver.

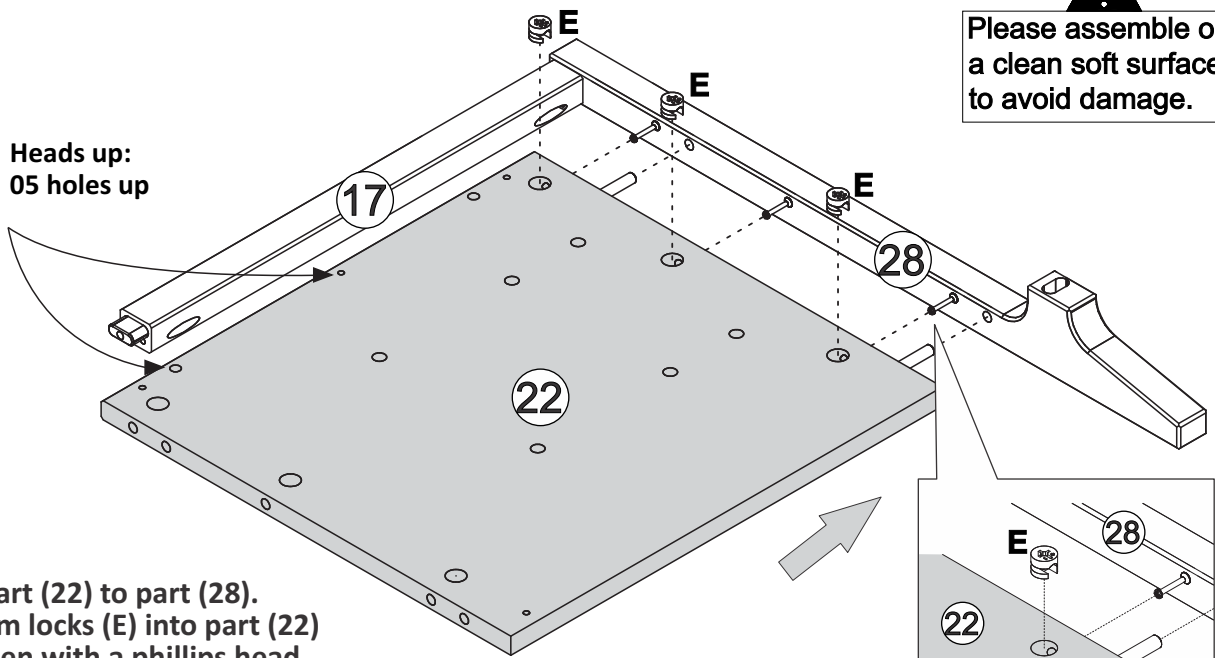
E		Ø15*09mm	03
---	--	----------	----

# Step 6

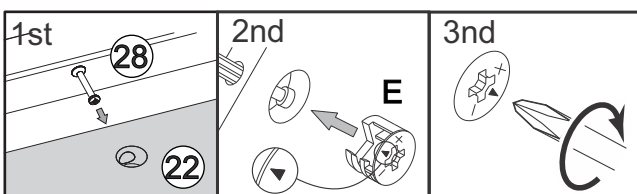
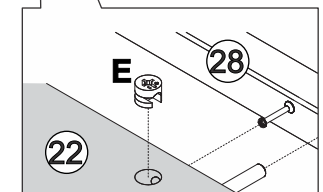
**!**  
Please assemble on a clean soft surface to avoid damage.



Heads up:  
05 holes up



Secure part (22) to part (28).  
Insert cam locks (E) into part (22)  
and tighten with a phillips head  
screwdriver.

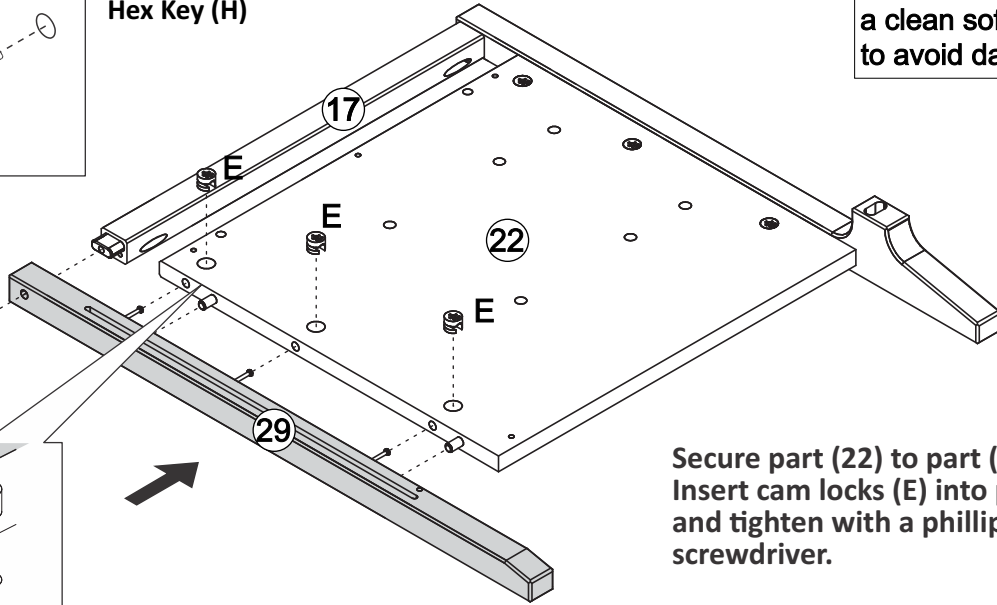
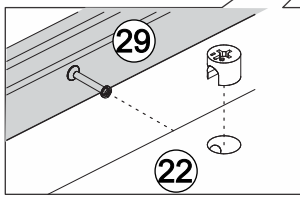
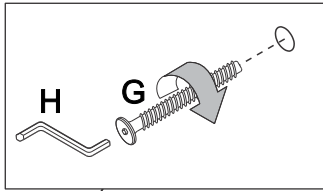


E		Ø15*09mm	03
---	--	----------	----

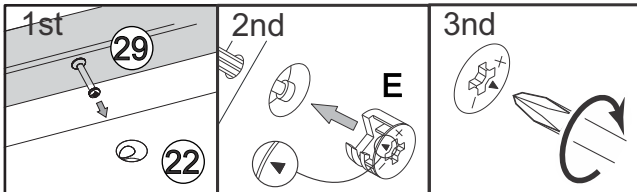
# Step 7


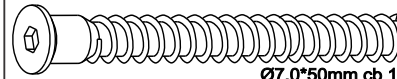

Use screw (G) to attach parts (29) to part (17) with Hex Key (H)

**!**  
Please assemble on a clean soft surface to avoid damage.



Secure part (22) to part (29). Insert cam locks (E) into part (22) and tighten with a phillips head screwdriver.

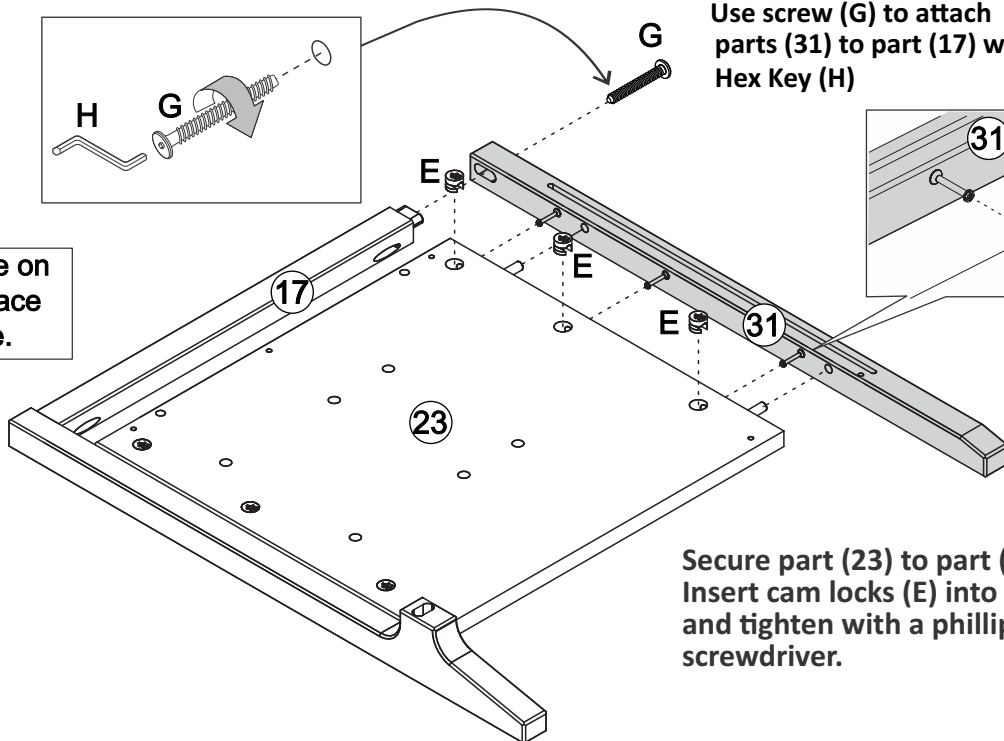
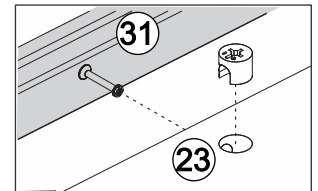
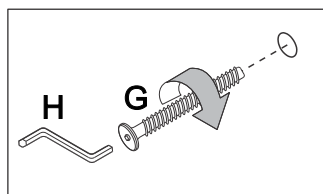


E	 Ø15*09mm	03
G	 Ø7,0*50mm cb 10	01
H		01

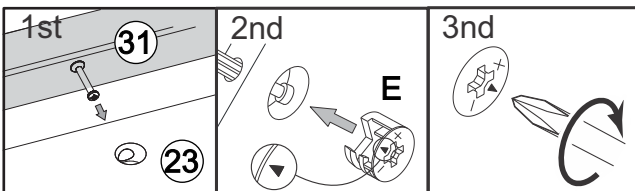
# Step 8


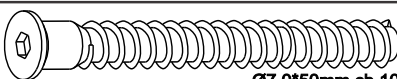

Use screw (G) to attach parts (31) to part (17) with Hex Key (H)

**!**  
Please assemble on a clean soft surface to avoid damage.



Secure part (23) to part (31). Insert cam locks (E) into part (23) and tighten with a phillips head screwdriver.




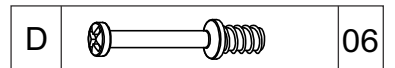
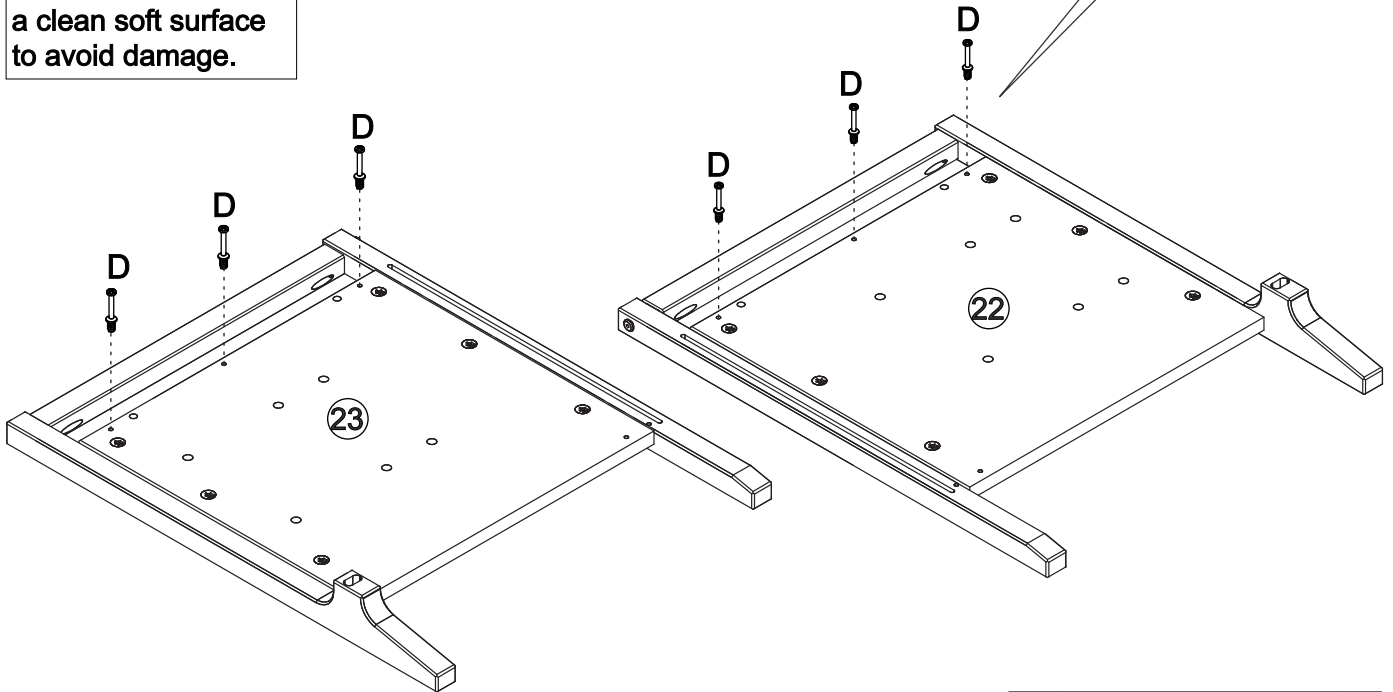
E	 Ø15*09mm	03
G	 Ø7,0*50mm cb 10	01
H		01



# Step 9


Insert cam bolt (D) to part (22,23).  
with Phillips head screwdriver.

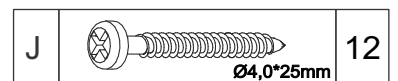
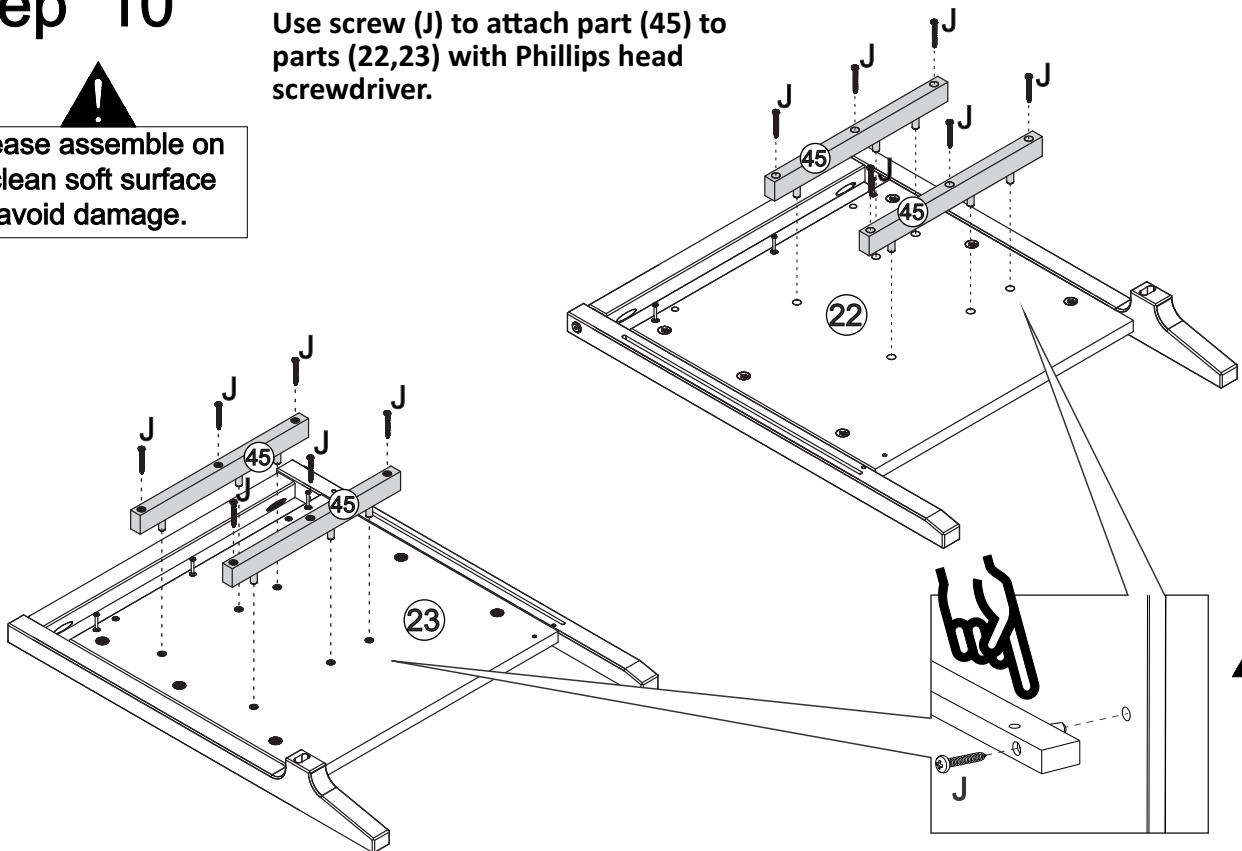
  
Please assemble on  
a clean soft surface  
to avoid damage.



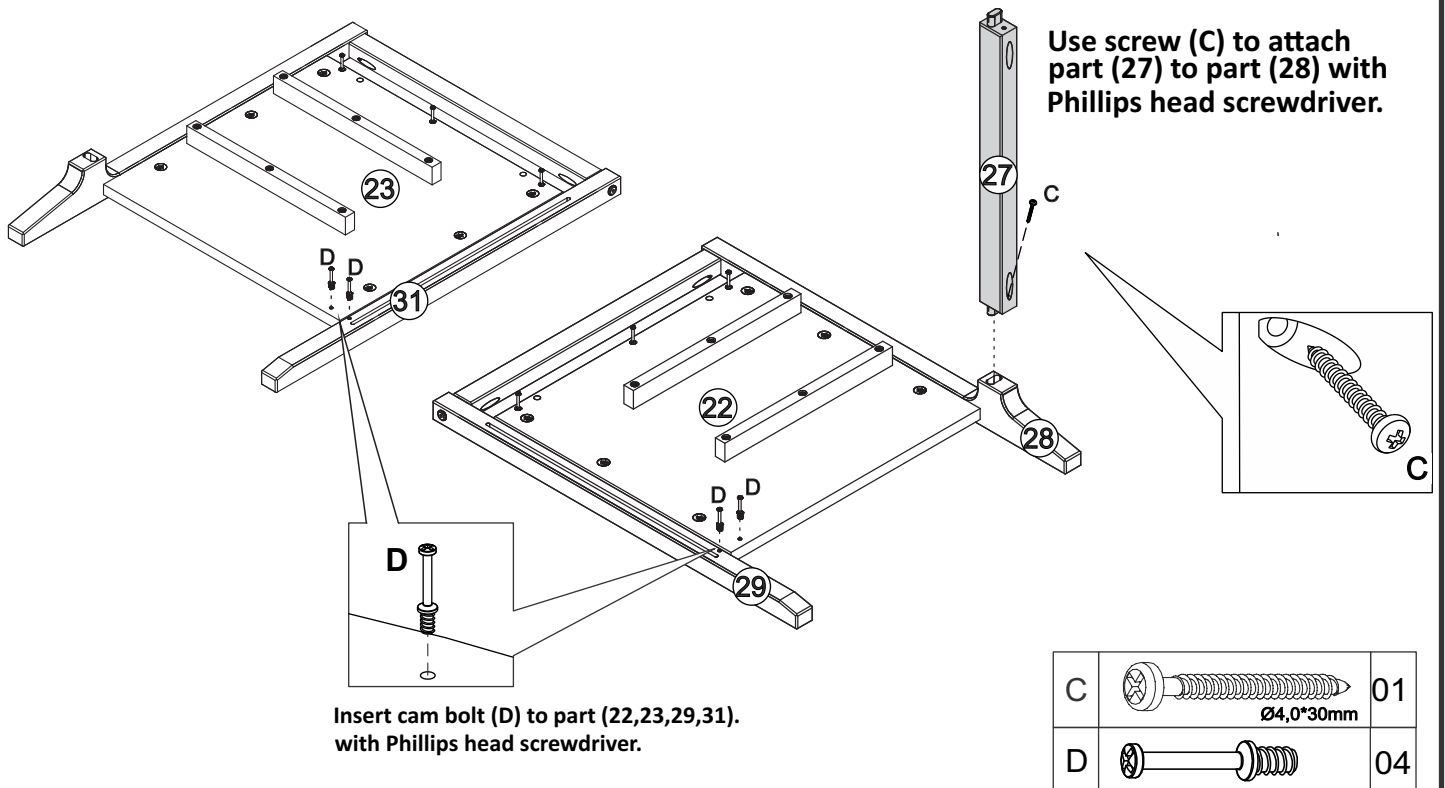
# Step 10

Use screw (J) to attach part (45) to  
parts (22,23) with Phillips head  
screwdriver.

  
Please assemble on  
a clean soft surface  
to avoid damage.

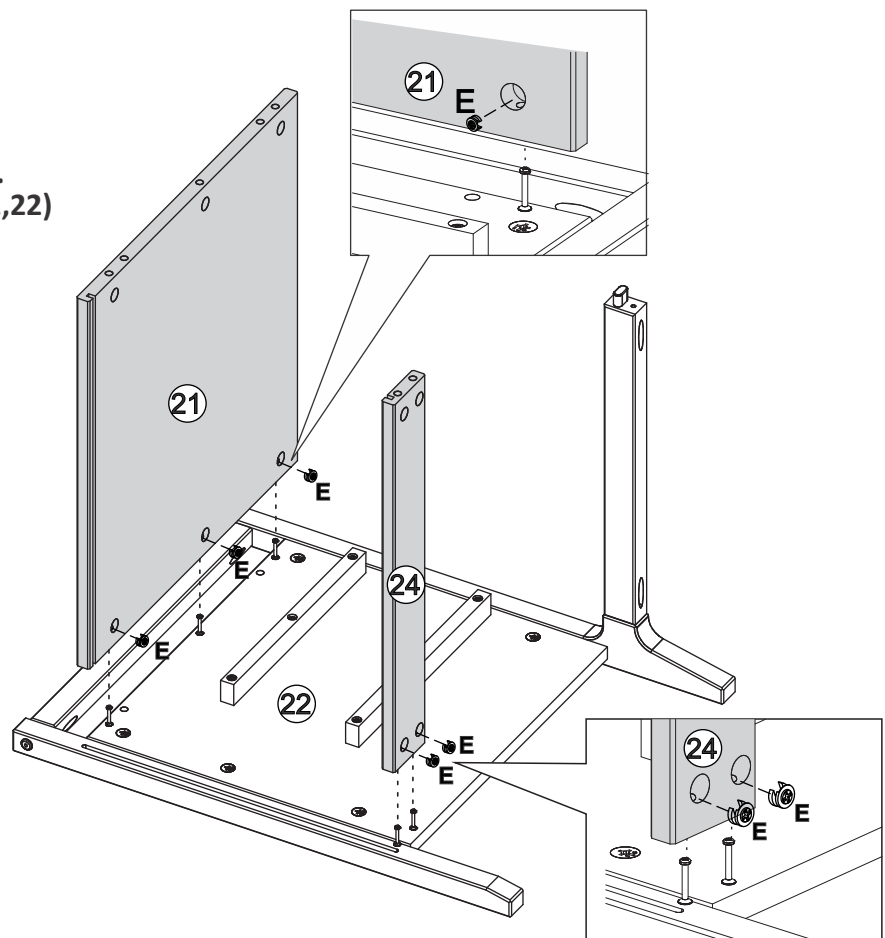
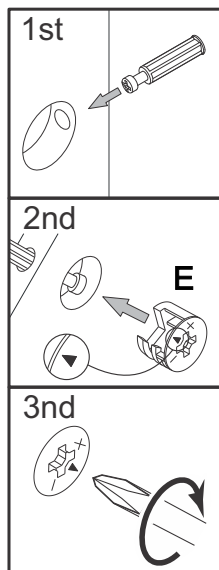


# Step 11



# Step 12

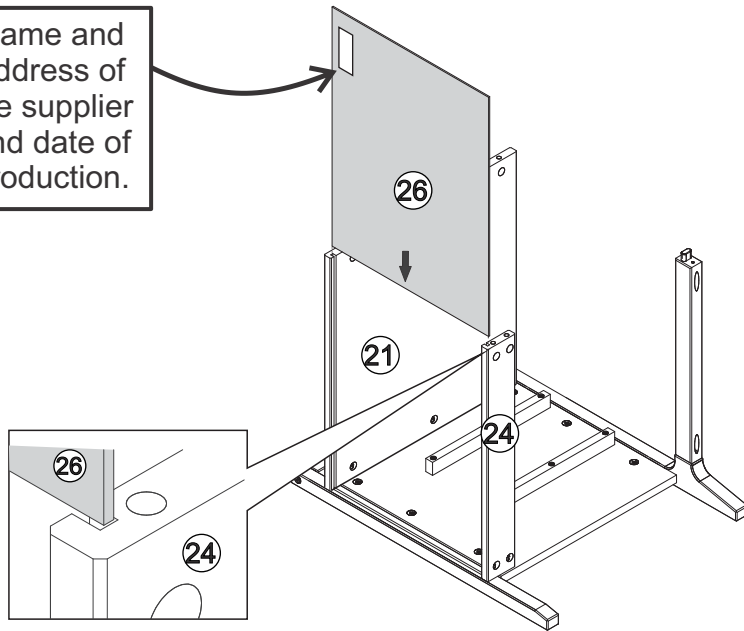
Secure parts (21,24) to part (22).  
Insert cam locks (E) into part (21,22)  
and tighten with a phillips head  
screwdriver.



E		05 Ø15*09mm
---	---------------------------------------------------------------------------------------	----------------

# Step 13

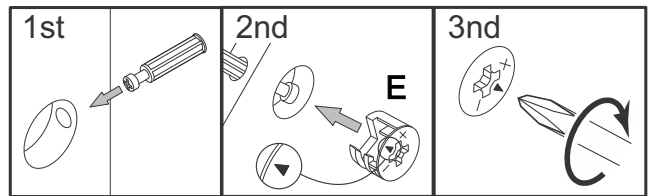
Name and address of the supplier and date of production.



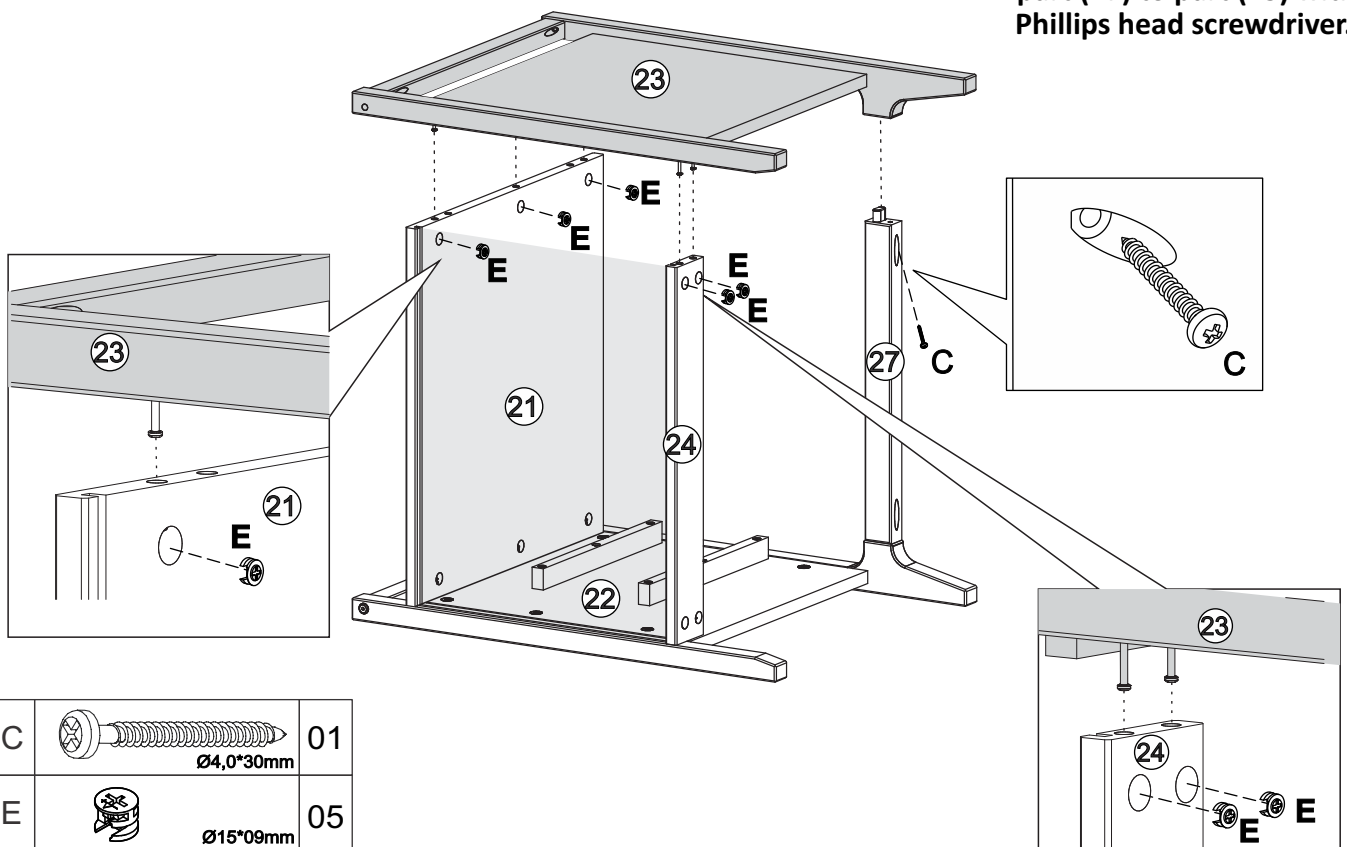
Insert part (26) into the grooves of parts (21,24).

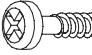

# Step 14

Secure parts (21,24,27) to part (23). Insert cam locks (E) into part (21,24) and tighten with a phillips head screwdriver.

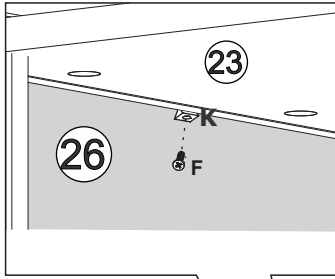


Use screw (C) to attach part (27) to part (23) with Phillips head screwdriver.

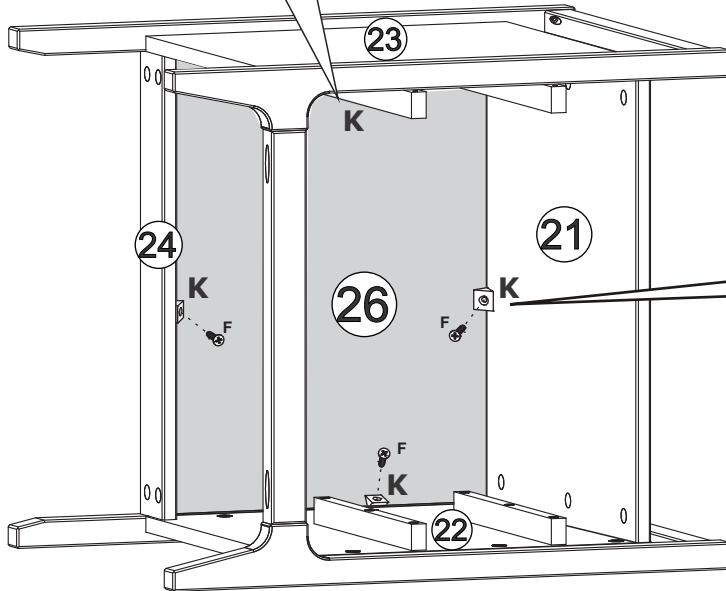


C		01
	Ø4,0*30mm	
E		05
	Ø15*09mm	

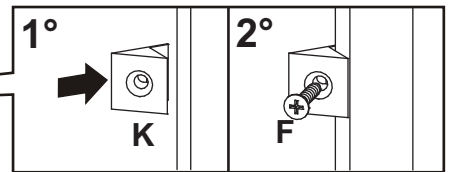
# Step 15



Use screw (F) to fix the device (K) to parts (21,22,23,24) with Phillips head screwdriver.



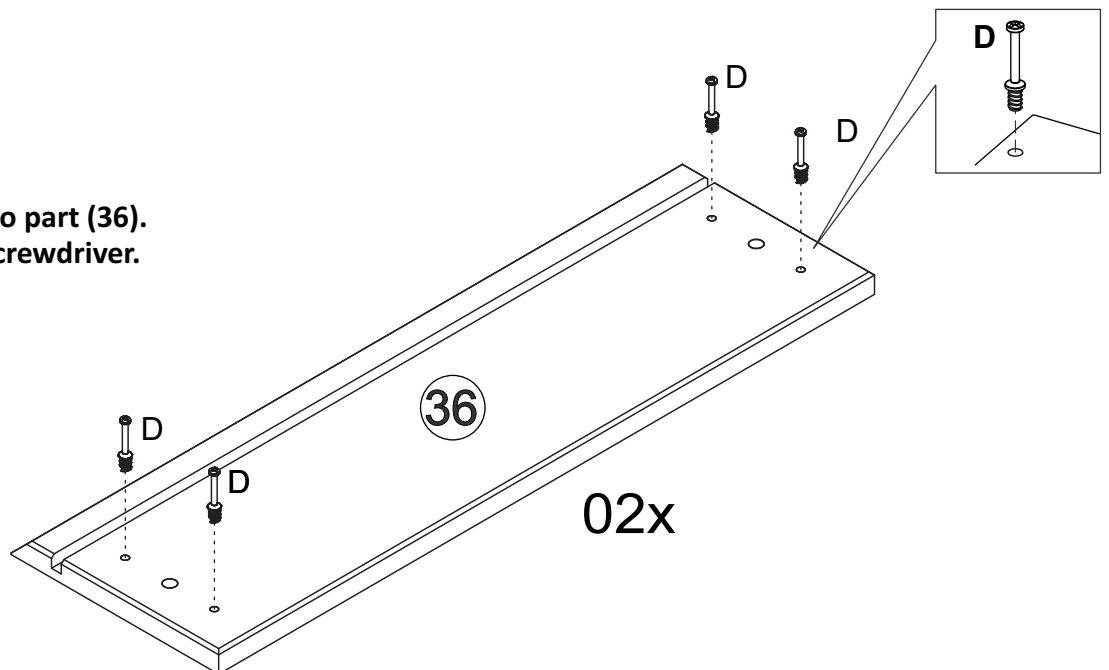
Insert device (K) between parts (21,26), (22,26), (23,26) (24,26).



F	Ø3,0*16mm	04
K		04

# Step 16

Insert cam bolt (D) to part (36) with Phillips head screwdriver.



Please assemble on a clean soft surface to avoid damage.

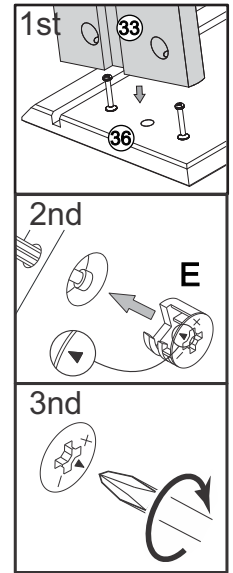
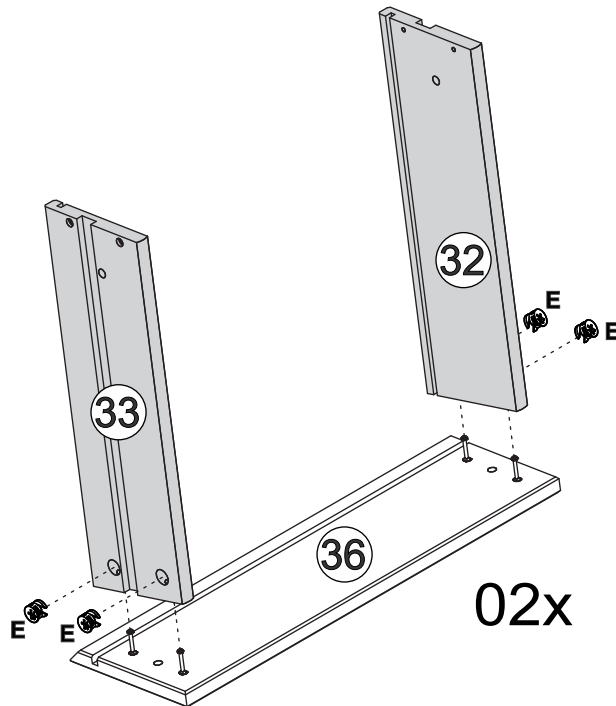
D		08
---	--	----

# Step 17



Please assemble on a clean soft surface to avoid damage.

Secure parts (32,33) to part (36).  
Insert cam locks (E) into parts (32,33) and tighten with a phillips head screwdriver.

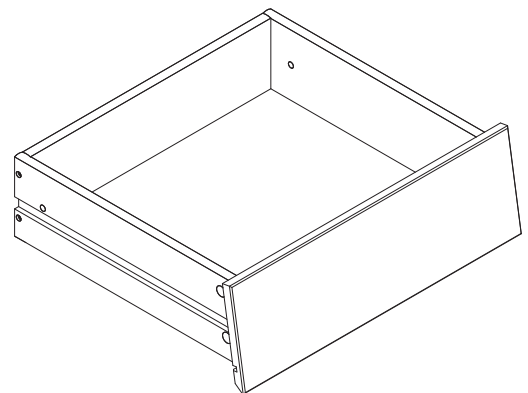
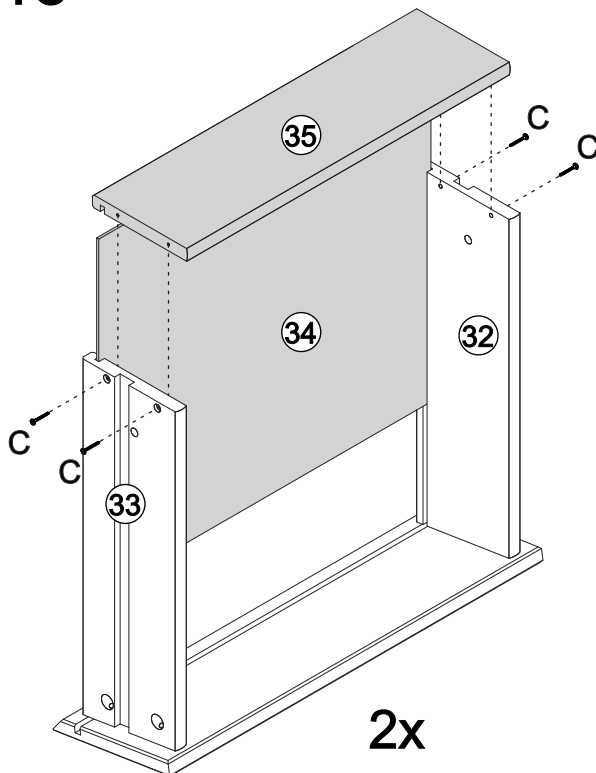


E		Ø15*09mm	08
---	---------------------------------------------------------------------------------------	----------	----


# Step 18



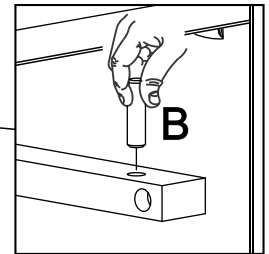
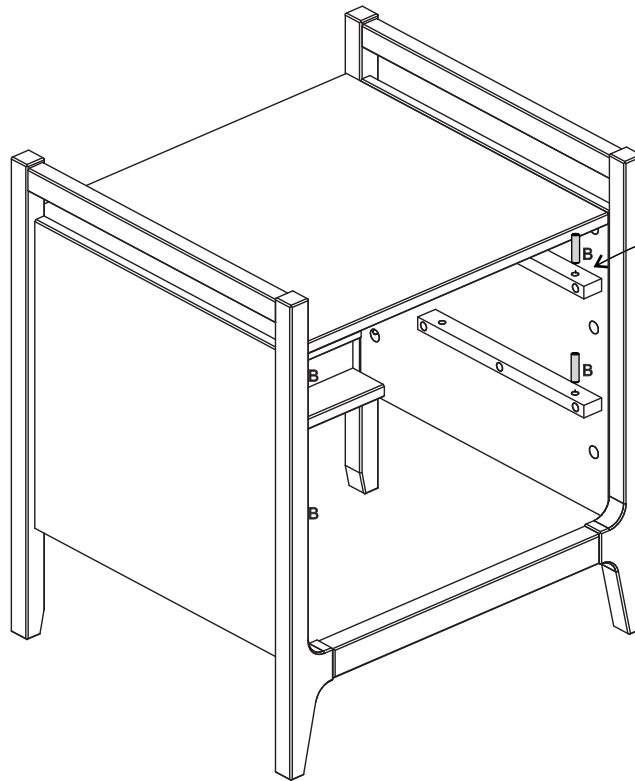
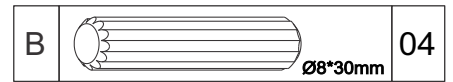
Please assemble on a clean soft surface to avoid damage.



Insert panel (34) into the grooves on parts (32, 33).  
Use crew (C) to secure part (35) to parts (32, 33) with Phillips head screwdriver.

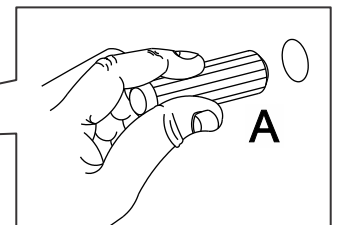
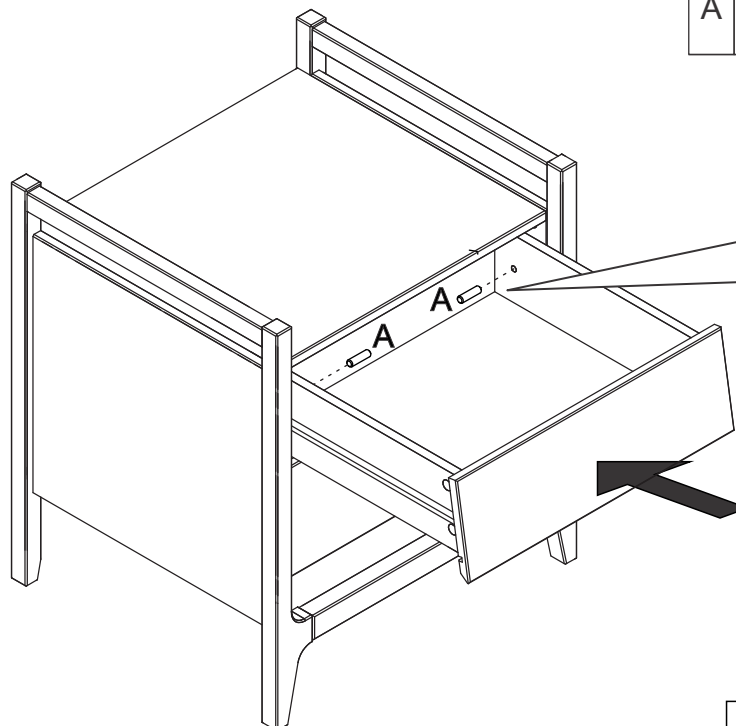
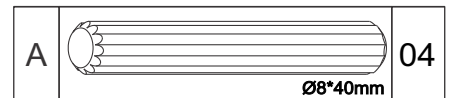
C		Ø4,0*30mm	08
---	---------------------------------------------------------------------------------------	-----------	----

## Step 19



Insert the dowels (B) into the drawer slide.

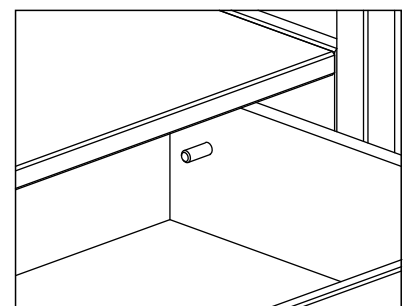
## Step 20

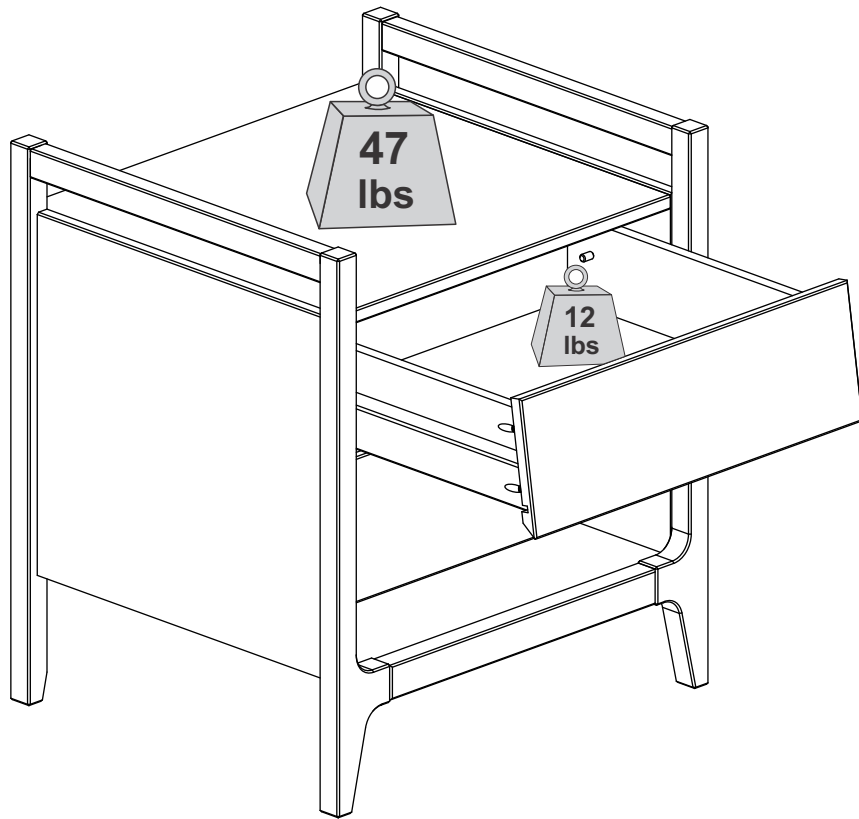


Insert wood dowel (A)

Insert wood dowel (A) on the inside of all drawers, with the drawer inside the unit, after having passed the wood dowel that is in the drawer slide.

The dowel is not flush with the panel, it is a little inside the drawer to help when you need to remove the lock dowel to remove the drawer.





**Assembly Complete!**